

**MINISTÈRE DES ARMÉES**  
**DIRECTION DE LA SÉCURITÉ AÉRONAUTIQUE D'ÉTAT**  
**DIRECTION DE LA CIRCULATION AÉRIENNE MILITAIRE**  
**DIVISION DE L'INFORMATION AÉRONAUTIQUE**  
Adresse postale : DIRCAM/DIA BP 80370  
33694 MERIGNAC CEDEX  
FT : 05.33.89.43.72 – PNIA : 865.337.4372  
SITE INTRADEF : <https://portail-dircam.intradef.gouv.fr>  
SITE INTERNET : <https://www.dircam.dsae.defense.gouv.fr>  
E-MAIL : [dsae-dircam-dia.sec-cdt.fct@intradef.gouv.fr](mailto:dsae-dircam-dia.sec-cdt.fct@intradef.gouv.fr)

---

## **MILITARY AERONAUTICAL INFORMATION CIRCULAR**

**N° 06/23 of NOVEMBER 06, 2023**

---

**SUBJECT** : Experimentation of LF-CBA1T L/M/H areas from 30/11/2023

### **1. Background**

To meet the needs expressed by the air forces, which in the north of France focus on real air security operations and, to a lesser extent, on occasional in-flight refuelling requirements, the LF-CBA1/B/C cross-border areas have been redefined to meet these needs and relieve a major bottleneck for European civil aviation.

Thus, three temporary cross-border segregation areas (LF-CBA1TL, LF-CBA1TM and LF-CBA1TH) will be created in the France and Brussels UIRs from 30/11/2023.

To complete this airspace system, an in-flight refuelling centre (CLARA) and an AWACS EPT (FR20T) will also be created.

#### **Use of LF-CBA1T L/M/H areas**

The creation of these areas was the subject of negotiations between the DIRCAM, the DGAC, the Maastricht control centre (MUAC), the Belgium (SKEYES), the British air navigation service provider (NATS), and the air component of the Belgian army.

During this period, the historical areas LF-CBA1A, LF-CBA1B and EB-CBA1C will no longer be activated and will be replaced by the temporary areas mentioned above, which will replace the portions of airspace with which they interfere.

The viability of this innovative system will be tested during a one-year experimental phase, renewable once for the same period.

All the arrangements for these new areas and their use are set out in an international memorandum of understanding.

The SUP AIP was published on 19 October 2023 under reference No. 200/23.

Note: an identical SUP AIP will be published in Belgium to inform Belgian users of the creation of these areas.

- **Real air operations**

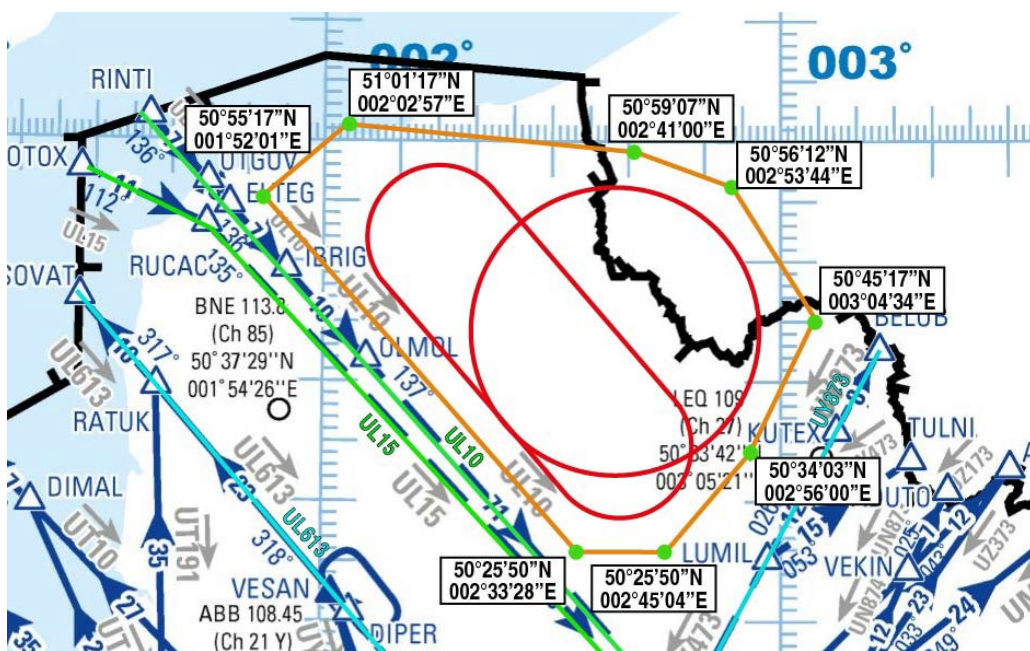
- LF-CBA1T H (High)
  - o Area dedicated to AWACS flights (EPT FR20T)
- LF-CBA1T M (Medium)
  - o Holding area for fighters (Quick Reaction Alert (QRA) or in-flight refuelling operations)
- LF-CBA1T L (Low)
  - o Area dedicated to air to air refuelling (CLARA pattern)

- **Training missions**

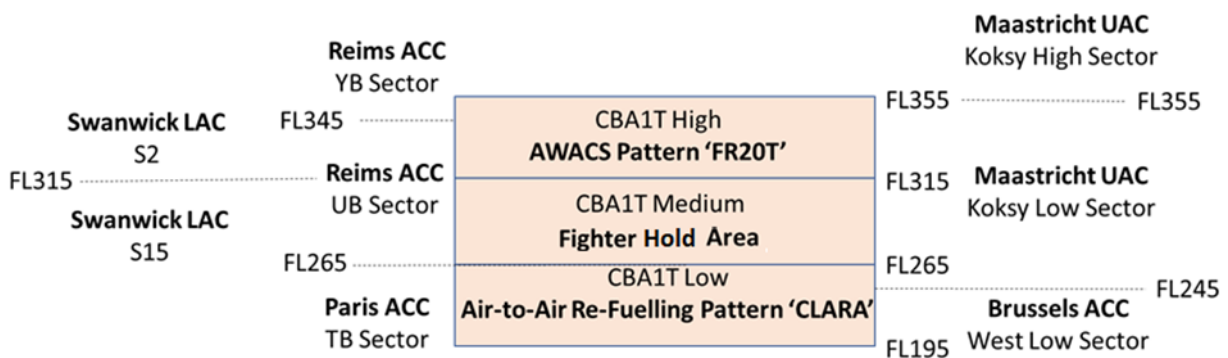
Training missions exclusively concern in-flight refuelling operations (limited to subdivisions LF-CBA1TL and LF-CBA1TM). No other type of training is authorised in areas LF-CBA1T L/M.

## 2. Description of the LF-CBA1T

### 2.1. Description of the LF-CBA1T L/M/H areas



Lateral limits (identical for each area)



Vertical limits of the areas

- This circular is three pages long -

## 2.2. Air to air refueling pattern CLARA (for use in FL-CBA1T L only)

The defined limits allow use with an FLB 230.

## 2.3. AWACS EPT « FR20T » (for use in FL-CBA1T H only)

The FR20T EPT is a circular EPT with a radius of 12 NM centred on the following point:  
N50°44'11"-E002°38'21"

### 3. Conditions of use

LF-CBA1TL 'Low', LF-CBA1TM 'Medium' and LF-CBA1TH 'High' can be activated simultaneously or separately.

All the conditions of use are detailed in the current temporary letter of agreement.

Zones LF-CBA1T L/M/H can be activated:

- With a 20 minutes notice for real operations.  
In this case, the activities planned or in progress (in-flight refuelling training or TRA W mission on the Belgian side) are cancelled.

#### For in-flight refuelling training :

- The classic rules for managing manageable areas, implemented in France, apply.  
For planned in-flight refuelling missions, LF-CBA1TL and LF-CBA1TM are reserved for planning and programming by the CDPGE (military AMC). A collaborative decision-making process has been set up with the Belgian authorities in the event of overlapping activities. If negotiations fail, the Belgian air component has priority over the use of its space on the Belgian side (TRA W).  
The booking process is described in detail in the temporary letter of agreement, which will come into effect on 30 November 2023.

---

---