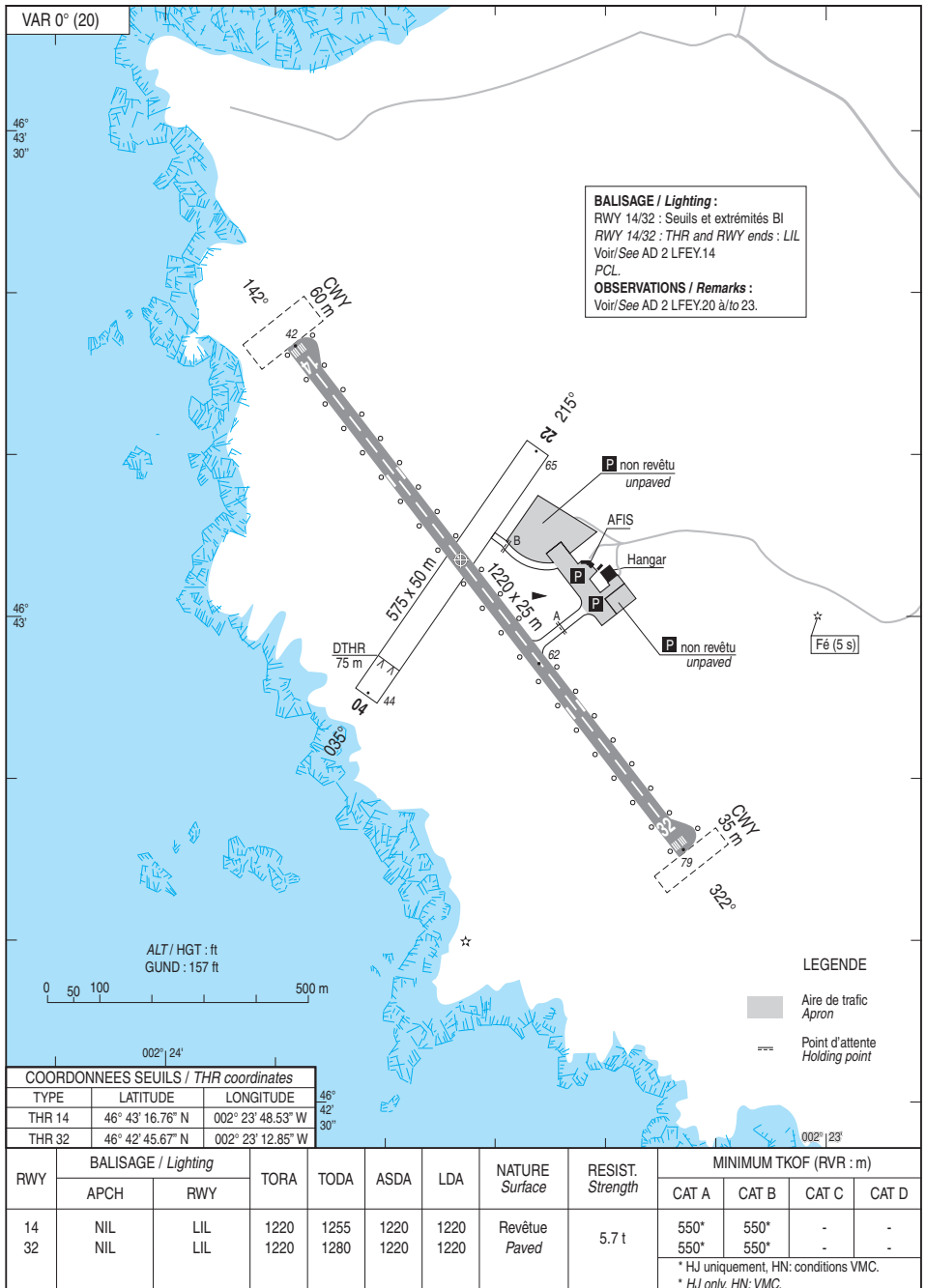


**CARTE D'AERODROME**  
Aerodrome chart

AFIS : 118.900 (FR uniquement/only)

**ILE D'YEU**  
46 43 03 N - 002 23 33 W  
ALT AD : 79 (3 hPa)



DATA

ILE D'YEU

## POINTS / REPERES ESSENTIELS DES PROCEDURES

*Waypoints / Procedures main fixes*

Identification	Coordonnées <i>Coordinates</i>		RNAV	CONV
BABAT	REF ENR 4.4		x	
ABADU	REF ENR 4.4		x	
GAGSO	REF ENR 4.4		x	
IEY14	46°51'02.2"N	002°32'44.5"W	x	
FEY14	46°47'58.8"N	002°29'12.9"W	x	
RWY14	46°43'16.76"N	002°23'48.53"W	x	
← EY610	46°43'18.0"N	002°33'08.1"W	x	
→ EY710	46°41'42.6"N	002°22'00.5"W	x	
ABIXI	REF ENR 4.4		x	
BAGIB	REF ENR 4.4		x	
GIGEX	REF ENR 4.4		x	
IEY32	46°35'00.3"N	002°14'20.5"W	x	
FEY32	46°38'08.8"N	002°17'55.8"W	x	
RWY32	46°42'45.67"N	002°23'12.85"W	x	
← EY410	46°37'01.1"N	002°25'53.2"W	x	
→ EY510	46°44'19.8"N	002°25'00.9"W	x	

**Données complémentaires à la page DATA 01**

Identification	COORDONNEES	RNAV	CONV
<b>BABAT</b>	46°54'57.7"N - 002°37'27.0"W	X	
<b>ABADU</b>	46°54'10.8"N - 002°27'12.1"W	X	
<b>GAGSO</b>	46°47'54.9"N - 002°38'33.2"W	X	
<b>ABIXI</b>	46°31'54.3"N - 002°19'55.2"W	X	
<b>BAGIB</b>	46°31'07.0"N - 002°09'45.4"W	X	
<b>GIGEX</b>	46°38'07.5"N - 002°08'34.2"W	X	



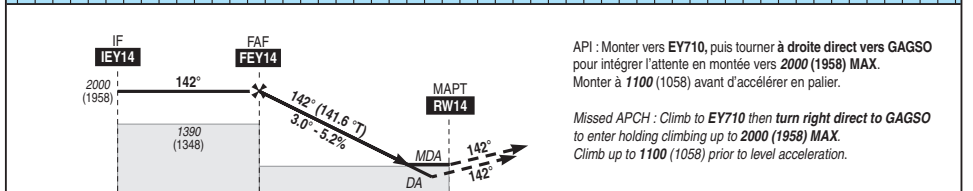
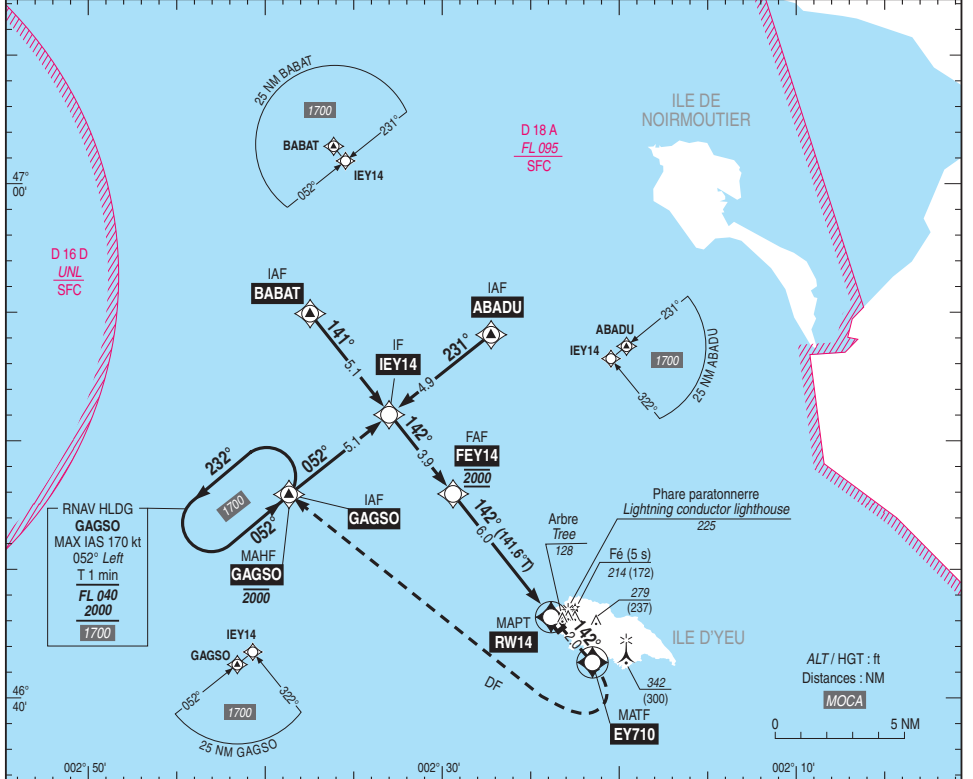
**APPROCHE AUX INSTRUMENTS**

**ILE D'YEU**

Instrument approach  
CAT A B  
ALT AD : 79, **THR : 42 (2 hPa)**

**RNP RWY 14**

APP : NIL TWR : NIL AFIS : ILE D'YEU Information 118.900 (FR uniquement/only). Absence ATS : A/A (118.900) FR uniquement/only. Obtenir/Obtain QNH sur/from ATIS NANTES 126.925 ou/or NANTES Information 122.800.	<b>RNP APCH</b>	<b>EGNOS Ch 90855 E14A RDH : 49</b>	<b>VAR 0° (20)</b>
--	-----------------	---	----------------------------



API : Monter vers EY710, puis tourner à **droite direct** vers GAGSO pour intégrer l'attente en montée vers **2000 (1958) MAX.**  
Monter à **1100 (1058)** avant d'accélérer en palier.

Missed APCH : Climb to **EY710** then **turn right direct** to GAGSO to enter holding climbing up to **2000 (1958) MAX.**  
Climb up to **1100 (1058)** prior to level acceleration.

MNM AD : distances verticales en pieds, RVR et VIS en mètres / vertical distances in feet, RVR and VIS in metres. REF HGT : ALT THR

CAT	LPV			LNAV			MVL / Circling (1)		MVL/Circling (1) Absence ATS		DIST RW14				
	DA (H)	RVR	OCH	MDA (H)	RVR	OCH	MDA (H)	VIS	MDA (H)	VIS	NM	2	3	4	5
A	430 (390)	1500	384	580 (540)	1500	537	710 (670)	1500	710 (670)	1500	730	1050	1360	1680	
B	440 (400)	1500	396				770 (730)	1600	770 (730)	1600	(688)	(1008)	(1318)	(1638)	

Observations / Remarks : (1) MVL uniquement sur la piste 14/32. Interdites à l'Est de la piste. Circuit RWY 32 : Gauche.  
(1) Circling only on RWY 14/32. Circling prohibited East of RWY. Left hand circuit RWY 32.

FAF - RW14	6.0 NM	70 kt 5 min 08	85 kt 4 min 14	100 kt 3 min 36	115 kt 3 min 08	130 kt 2 min 46
VSP (ft/min)		370	450	530	610	685

**ILE D'YEU**  
**PRECODING RNP RWY 14**

RNP RWY14														
RMK	Leg sequence	Path Terminator	Waypoint Identification	Fly Over	Direction MAG (°)	Direction True (°)	Distance (NM)	Turn direction	MINM Altitude (FL or AMSL ft)	MAX Altitude (FL or AMSL ft)	MAX IAS (kt)	Vertical angle (°) / TCH (m)	REF NAV AID : -	NAV Spec
	HLDG	-	GAGSO	-	-	-	-	-	-	-	-	-	-	-
	INA GAGSO	IF	GAGSO	-	-	-	-	-	-	-	-	-	-	RNP APCH
		TF	IEY14	-	062	051.9	5.1	-	-	-	-	-	-	RNP APCH
	INA ABADU	IF	ABADU	-	-	-	-	-	-	-	-	-	-	RNP APCH
		TF	IEY14	-	231	230.4	4.9	-	-	-	-	-	-	RNP APCH
	INA BABAT	IF	BABAT	-	-	-	-	-	-	-	-	-	-	RNP APCH
		TF	IEY14	-	141	140.5	5.1	-	-	-	-	-	-	RNP APCH
		IF	IEY14	-	-	-	-	-	-	-	-	-	-	RNP APCH
		TF	FEY14	-	142	141.6	3.9	-	2000	2000	-	-	-	RNP APCH
		TF	RW14	Yes	142	141.6	6.0	-	-	-	-	-3.0 / 15.0	-	RNP APCH
		TF	EY710	Yes	142	141.7	2.0	-	-	-	-	-	-	RNP APCH
		DF	GAGSO	-	-	-	-	R	-	2000	-	-	-	RNP APCH

↓  
↑  
↑

## Input data

Operation Type	0
SBAS Provider	1
Airport Identifier	LFEY
Runway	14
Runway Direction	0
Approach Performance Designator	0
Route Indicator	
Reference Path Data Selector	0
Reference Path Identifier	E14A
LTP/FTP Latitude	464316,7590N
LTP/FTP Longitude	0022348,5300W
LTP/FTP Ellipsoidal Height (metres)	60,6
FPAP Latitude	464233,6720N
Delta FPAP Latitude (seconds)	-43,0870
FPAP Longitude	0022259,0850W
Delta FPAP Longitude (seconds)	49,4450
Threshold Crossing Height	15,00
TCH Units Selector	1
Glidepath Angle (degrees)	3,00
Course Width (metres)	105
Length Offset (metres)	472
HAL (metres)	40
VAL (metres)	35

## Output data

Data Block	10 19 05 06 0C 0E 00 00 01 34 31 05 2E F5 0C 14 9C AD F8 FE 5E 16 62 AF FE 4A 82 01 2C 81 2C 01 64 3B C8 AF C0 34 3A EE
Calculated CRC Value	C0 34 3A EE

## Required Additional Data

ICAO Code	LF
LTP/FTP Orthometric Height (metres)	12,7
FPAP Orthometric Height (metres)	12,7





**APPROCHE AUX INSTRUMENTS**

**ILE D'YEU**

Instrument approach

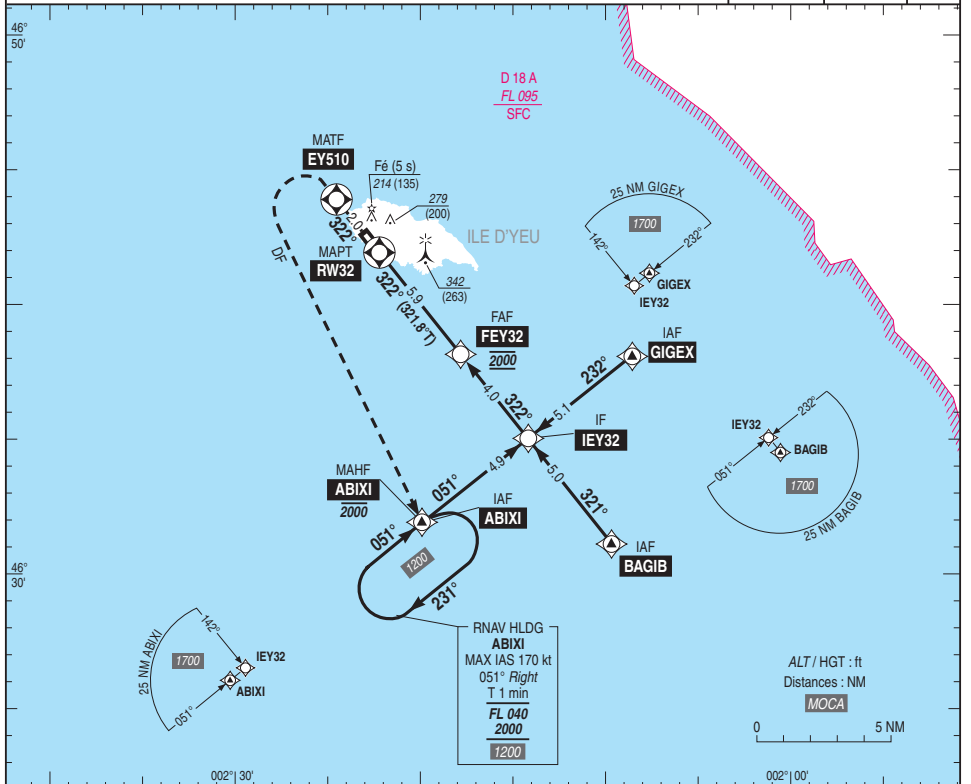
CAT A B

ALT AD : 79, **THR : 79 (3 hPa)**

**RNP RWY 32**

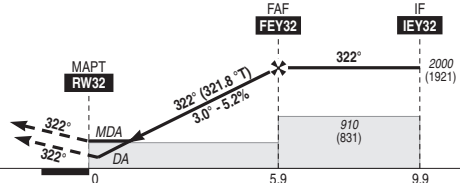
APP : NIL  
TWR : NIL  
AFIS : ILE D'YEU Information 118.900 (FR uniquement/only).  
Absence ATS : AIA (118.900) FR uniquement/only.  
Obtenir/Obtain QNH sur/from ATIS NANTES 126.925 ou/ou NANTES Information 122.800.

RNP APCH	EGNOS	VAR
	Ch 93113	0°
	E32A	(20)
	RDH : 49	



API : Monter vers **EY510**, puis tourner à **gauche direct vers ABIXI** pour intégrer l'attente en montée vers **2000 (1921) MAX.**  
Monter à **900 (821)** avant d'accélérer en palier.

Missed APCH : Climb to **EY510** then **turn left direct to ABIXI** to enter holding climbing up to **2000 (1921) MAX.**  
Climb up to **900 (821)** prior to level acceleration.



THR ← (NM)  
MNM AD : distances verticales en pieds, RVR et VIS en mètres / vertical distances in feet, RVR and VIS in metres. REF HGT : ALT THR

CAT	LPV			LNAV			MVL / Circling <sup>(1)</sup>		MVL/Circling <sup>(1)</sup> Absence ATS		DIST RW32				
	DA (H)	RVR	OCH	MDA (H)	RVR	OCH	MDA (H)	VIS	MDA (H)	VIS	NM	2	3	4	5
A	420 (340)	1500	338	660 (580)	1500	577	710 (630)	1500	710 (630)	1500	770	1080	1400	1720	
B	430 (350)	1500	350				770 (690)	1600	770 (690)	1600		(691)	(1001)	(1321)	(1641)

Observations / Remarks : (1) MVL uniquement sur la piste 14/32. Interdites à l'Est de la piste. Circuit à droite RWY 14.  
(1) Circling only on RWY 14/32. Circling prohibited East of RWY. Right hand circuit RWY 14.

FAF - RW32	5.9 NM	70 kt 5 min 02	85 kt 4 min 09	100 kt 3 min 32	115 kt 3 min 04	130 kt 2 min 43
VSP (ft/min)		370	450	530	610	685

**ILE D'YEU**  
**PRECODING RNP RWY 32**

<b>RNP RWY32</b>											
RMK	Path Terminator	Waypoint Identification	Fly Over	Direction MAG (°)	Direction True (°)	Distance (NM)	Turn direction	MNM Altitude (FL or AMSL ft)	MAG VAR 2020 0.3°W MAX Altitude (FL or AMSL ft)	REF NAV AID: - Vertical angle (°) / TCH (m)	NAV Spec
	-	ABIXI	-	-	-	-	-	-	-	-	-
INA ABIXI	IF	ABIXI	-	-	-	-	-	-	-	-	RNP APCH
	TF	IEY32	-	051	051.1	004.9	-	-	-	-	RNP APCH
INA GIGEX	IF	GIGEX	-	-	-	-	-	-	-	-	RNP APCH
	TF	IEY32	-	232.0	231.9	5.1	-	-	-	-	RNP APCH
INA BAGIB	IF	BAGIB	-	-	-	-	-	-	-	-	RNP APCH
	TF	IEY32	-	321.0	320.9	5.0	-	-	-	-	RNP APCH
	IF	IEY32	-	-	-	-	-	-	-	-	RNP APCH
	TF	FEY32	-	322.0	321.8	4.0	-	2000	2000	-	RNP APCH
	TF	RW32	Yes	322.0	321.8	5.9	-	-	-	-3.0 / 15.0	RNP APCH
	TF	EY510	Yes	322	321.7	2.0	-	-	-	-	RNP APCH
	DF	ABIXI	-	-	-	-	L	-	2000	-	RNP APCH

↓ ↑ ↑

## Input data

<b>Operation Type</b>	0
<b>SBAS Provider</b>	1
<b>Airport Identifier</b>	LFEY
<b>Runway</b>	32
<b>Runway Direction</b>	0
<b>Approach Performance Designator</b>	0
<b>Route Indicator</b>	
<b>Reference Path Data Selector</b>	0
<b>Reference Path Identifier</b>	E32A
<b>LTP/FTP Latitude</b>	464245,6700N
<b>LTP/FTP Longitude</b>	0022312,8510W
<b>LTP/FTP Ellipsoidal Height (metres)</b>	72,1
<b>FPAP Latitude</b>	464328,7560N
<b>Delta FPAP Latitude (seconds)</b>	43,0860
<b>FPAP Longitude</b>	0022402,3020W
<b>Delta FPAP Longitude (seconds)</b>	-49,4510
<b>Threshold Crossing Height</b>	15,00
<b>TCH Units Selector</b>	1
<b>Glidepath Angle (degrees)</b>	3,00
<b>Course Width (metres)</b>	105
<b>Length Offset (metres)</b>	472
<b>HAL (metres)</b>	40
<b>VAL (metres)</b>	35

## Output data

<b>Data Block</b>	10 19 05 06 0C 20 00 00 01 32 33 05 4C 02 0C 14 5A C4 F9 FE D1 16 9C 50 01 AA 7D FE 2C 81 2C 01 64 3B C8 AF BB D9 D4 CE
<b>Calculated CRC Value</b>	BB D9 D4 CE

## Required Additional Data

<b>ICAO Code</b>	LF
<b>LTP/FTP Orthometric Height (metres)</b>	24,2
<b>FPAP Orthometric Height (metres)</b>	24,2

