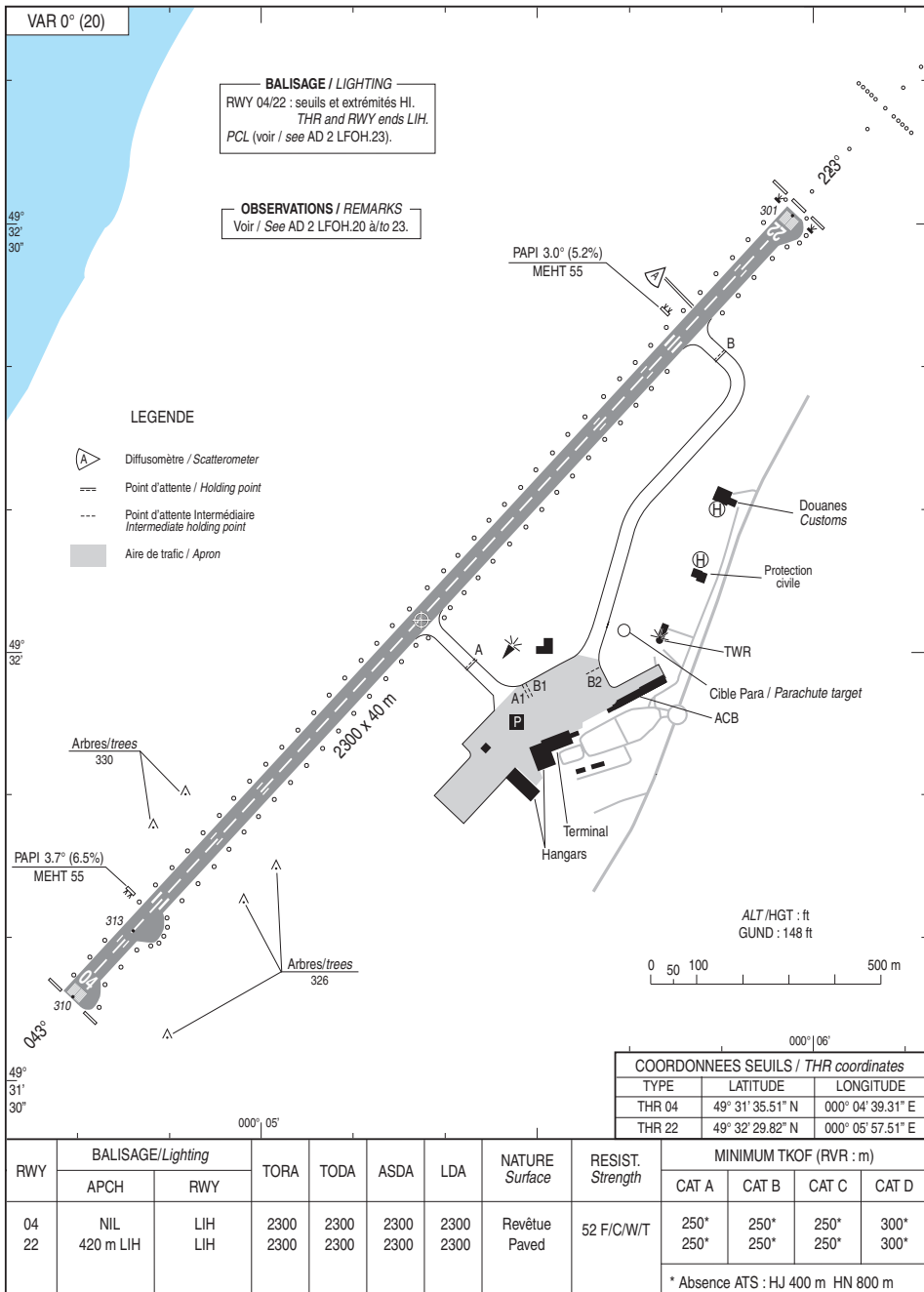


**CARTE D'AERODROME**  
Aerodrome chart

STAP : 135.200

**LE HAVRE OCTEVILLE**  
49 32 02 N - 000 05 17 E  
ALT AD : 313 (12 hPa)



**POINTS / REPERES ESSENTIELS DES PROCEDURES**  
*Waypoints / Procedures main fixes*

| <b>Identification</b> | <b>Coordonnées</b><br><i>Coordinates</i> | <b>RNAV</b> | <b>CONV</b> |
|-----------------------|--|-------------|-------------|
| IAF ABAMU             | REF Enr 4.3                              | <b>X</b>    |             |
| DEMOM                 | REF Enr 4.3                              | <b>X</b>    |             |
| IAF GANPU             | REF Enr 4.3                              | <b>X</b>    |             |
| IAF IXIVO             | REF Enr 4.3                              | <b>X</b>    |             |
| FOH22                 | 49°38'33.4" N 000°14'42.8" E             | <b>X</b>    |             |
| IAF LULIP             | REF Enr 4.3                              | <b>X</b>    |             |
| IAF OLONU             | REF Enr 4.3                              | <b>X</b>    |             |
| IAF/IF USAPI          | REF Enr 4.3                              | <b>X</b>    |             |
| IF IOH04              | 49°22'44.4" N 000°08'01.8" W             | <b>X</b>    |             |
| FAF FOH04             | 49°26'23.6" N 000°02'48.5" W             | <b>X</b>    |             |
| THR RW04              | 49°31'35.51" N 000°04'39.31" E           | <b>X</b>    |             |
| IAF LHO               | REF AD2 LFOH 19                          |             | <b>X</b>    |
| THR RW22              | 49°32'29.82" N 000°05'57.51" E           | <b>X</b>    |             |
| MATF OH410            | 49°33'07.4" N 000°06'51.6" E             | <b>X</b>    |             |
| MATF OH710            | 49°30'18.6" N 000°02'48.6" E             | <b>X</b>    |             |

Données complémentaires à la page DATA 01

| IDENTIFICATION | COORDONNEES                  | RNAV | CONV |
|----------------|------------------------------|------|------|
| ABAMU          | 49°23'49.9"N - 000°15'29.3"W | X    |      |
| DEMOM          | 49°32'53.2"N - 000°07'51.0"W | X    |      |
| GANPU          | 49°19'04.8"N - 000°13'14.8"W | X    |      |
| IXIVO          | 49°46'39.8"N - 000°16'31.4"E | X    |      |
| KUVEB          | 49°38'33.4"N - 000°14'42.8"E | X    |      |
| LULIP          | 49°18'17.1"N - 000°04'33.9"W | X    |      |
| OLONU          | 49°40'12.5"N - 000°27'04.3"E | X    |      |
| USAPI          | 49°42'11.6"N - 000°19'59.5"E | X    |      |
| LHO IAF        | 49°35'51.1"N - 000°10'51.8"E |      | X    |



**APPROCHE AUX INSTRUMENTS**

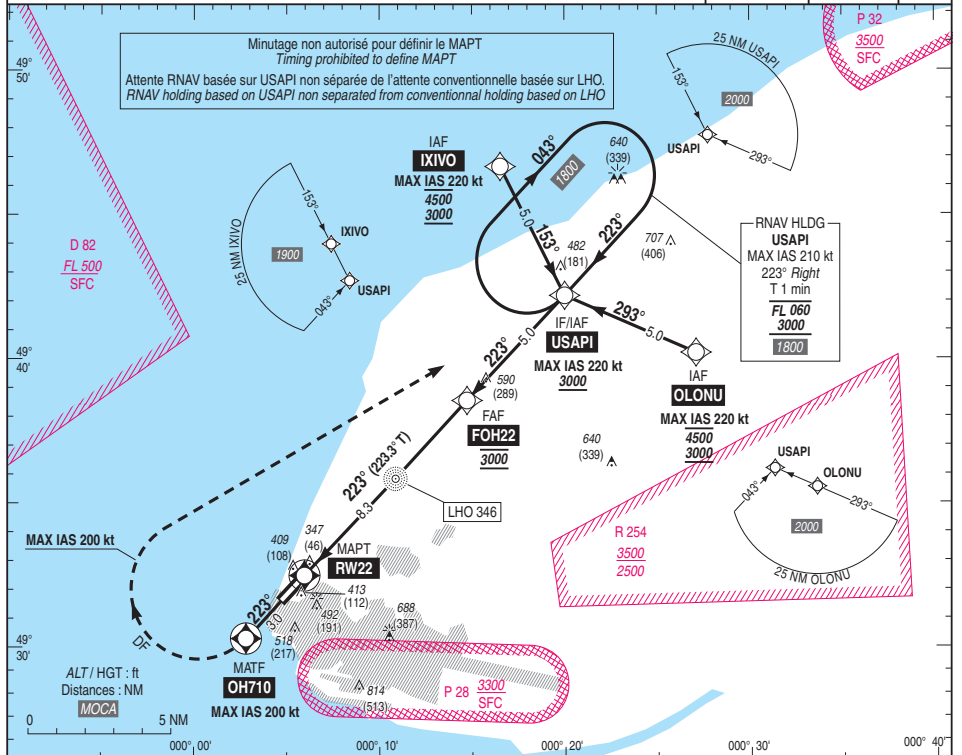
**LE HAVRE OCTEVILLE**

Instrument approach  
CAT A B C D

ALT AD : 313, THR : 301 (11 hPa)

**RNP RWY 22**

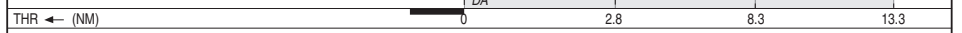
|   |                 |   |                          |
|---|-----------------|---|--------------------------|
| STAP 135.200<br>APP : DEAUVILLE Approche / Approach 120.350<br>AFIS : LE HAVRE Information 135.200<br>Absence ATS : <b>A/A</b> FR seulement. Obtenir le QNH local sur STAP (FR) ou le QNH de DEAUVILLE sur DEAUVILLE Approche.<br><b>A/A</b> FR only. Obtain local QNH from STAP (FR) or DEAUVILLE QNH on DEAUVILLE Approach. | <b>RNP APCH</b> | <b>EGNOS</b><br>Ch 62582<br><b>E22A</b><br>RDH : 49 | <b>VAR</b><br>0°<br>(20) |
|---|-----------------|---|--------------------------|



TA : 5000

API : Monter vers OH710 (MAX IAS 200 kt).  
A OH710, tourner à droite **direct** vers USAPI en montée vers 3000 (1699).  
**Ne pas tourner avant le MAPT.**  
Monter à 1400 (1099) avant d'accélérer en palier.

Missed APCH : Climb up to OH710 (MAX IAS 200 kt).  
At OH710, turn right **direct** to USAPI up to 3000 (1699).  
**Do not turn before MAPT.**  
Climb up to 1400 (1099) prior to level acceleration.



MNM AD : distances verticales en pieds, RVR et VIS en mètres / vertical distances in feet, RVR and VIS in metres. REF HGT : ALT THR

| CAT | LPV       |     |     | LNAV      |      |     | MVL / Circling (1) |      | MVL / Circling (1)(2)<br>Absence ATS<br>Sans/Without QNH local |      | DIST RW22 |        |        |        |   |
|-----|-----------|-----|-----|-----------|------|-----|--------------------|------|--|------|-----------|--------|--------|--------|---|
|     | DA (H)    | RVR | OCH | MDA (H)   | RVR  | OCH | MDA (H)            | VIS  | MDA (H)  | VIS  | NM        | 8      | 7      | 6      | 5 |
| A   | 510 (200) | 750 | 185 |           |      |     | 820 (520)          | 1500 | 920 (620)  | 1500 | 2900      | 2580   | 2260   | 1940   |   |
| B   | 510 (200) | 750 | 192 |           |      |     | 820 (520)          | 1600 | 920 (620)  | 1600 | (2600)    | (2280) | (1960) | (1640) |   |
| C   | 510 (210) | 750 | 203 | 670 (370) | 1300 | 364 | 920 (620)          | 2400 | 1020 (720)   | 2400 | 4         | 3      | 2      | 1      |   |
| D   | 520 (220) | 800 | 212 |           |      |     | 1010 (700)         | 3600 | 1110 (800)   | 3600 | 1620      | 1310   | 990    | 670    |   |
|     |           |     |     |           |      |     |                    |      |  |      | (1320)    | (1010) | (690)  | (370)  |   |

Observations / Remarks : Panne de guidage GNSS lors de l'approche / Loss of guidance during approach : voir / see AIP ENR 1.5  
(1) MVL interdites au Sud-Est de la piste / Circling prohibited South-East of RWY.  
(2) HJ seulement / only.

| RNP RWY22 |              |                 |                         |          |                   |                    |               |                |                              |                                |              |  |          |
|-----------|--------------|-----------------|-------------------------|----------|-------------------|--------------------|---------------|----------------|------------------------------|--------------------------------|--------------|--|----------|
| RMK       | Leg sequence | Path Terminator | Waypoint Identification | Fly Over | Direction MAG (°) | Direction True (°) | Distance (NM) | Turn direction | MMI Altitude FL or AMSL (ft) | MAX Altitude (FL or AMSL) (ft) | MAX IAS (kt) | Ref NAV AID : DVL<br>Vertical angle (°) /<br>TCH (m) | Nar Spec |
|           | HLDG         | IF              | USAPI                   |          |                   |                    |               |                |                              |                                |              |  |          |
|           | INA LXIVO    | TF              | LXIVO                   |          | 153               | 153.3              | 5.0           | R              | 3000                         | 4500                           | 220          |  | RNP APCH |
|           | INA OLONU    | TF              | OLONU                   |          |                   |                    |               |                | 3000                         | 4500                           | 220          |  | RNP APCH |
|           | INA USAPI    | IF/TF           | USAPI                   |          | 233               | 233.4              | 5.0           | L              | 3000                         |                                | 220          |  | RNP APCH |
|           |              | IF              | USAPI                   |          |                   |                    |               |                | 3000                         |                                | 220          |  | RNP APCH |
|           | APCH         | TF              | FOH22                   |          | 223               | 223.3              | 5.0           |                | 3000                         | 3000                           |              |  | RNP APCH |
|           |              | TF              | RW22                    | Yes      | 223               | 223.3              | 8.3           |                |                              |                                |              | -3.0° / 15   | RNP APCH |
|           |              | TF              | OH710                   | Yes      | 223               | 223.3              | 3.0           | R              |                              |                                | 200          |  | RNP APCH |
|           |              | DF              | USAPI                   |          |                   |                    |               |                | 3000                         |                                |              |  | RNP APCH |

**Input data**

|                                     |               |
|-------------------------------------|---------------|
| Operation Type                      | 0             |
| SBAS Provider                       | 1             |
| Airport Identifier                  | LFOH          |
| Runway                              | 22            |
| Runway Direction                    | 0             |
| Approach Performance Designator     | 0             |
| Route Indicator                     |               |
| Reference Path Data Selector        | 0             |
| Reference Path Identifier           | E22A          |
| LTP/FTP Latitude                    | 493229.8160N  |
| LTP/FTP Longitude                   | 0000557.5120E |
| LTP/FTP Ellipsoidal Height (metres) | 136.5         |
| FPAP Latitude                       | 493135.5140N  |
| Delta FPAP Latitude (seconds)       | -54.3020      |
| FPAP Longitude                      | 0000439.3120E |
| Delta FPAP Longitude (seconds)      | -78.2000      |
| Threshold Crossing Height           | 15.0          |
| TCH Units Selector                  | 1             |
| Glidepath Angle (degrees)           | 3.00          |
| Course Width (metres)               | 105.00        |
| Length Offset (metres)              | 0             |
| HAL (metres)                        | 40.0          |
| VAL (metres)                        | 35.0          |

**Output data**

|                      |  |
|----------------------|--|
| Data Block           | 10 08 0F 06 0C 16 00 00 01 32<br>32 05 F0 CD 42 15 10 E9 0A 00<br>55 19 C4 57 FE 10 9D FD 2C 81<br>2C 01 64 00 C8 AF 97 75 19 4C |
| Calculated CRC Value | 9775194C   |

**Required Additional Data**

|                                     |      |
|-------------------------------------|------|
| ICAO Code                           | LF   |
| LTP/FTP Orthometric Height (metres) | 91.8 |
| FPAP Orthometric Height (metres)    | 91.8 |





**APPROCHE AUX INSTRUMENTS**

**LE HAVRE OCTEVILLE**

Instrument approach

CAT A B C D

NDB RWY 22

ALT AD : 313 , THR : 301 (11 hPa)

STAP 135.200

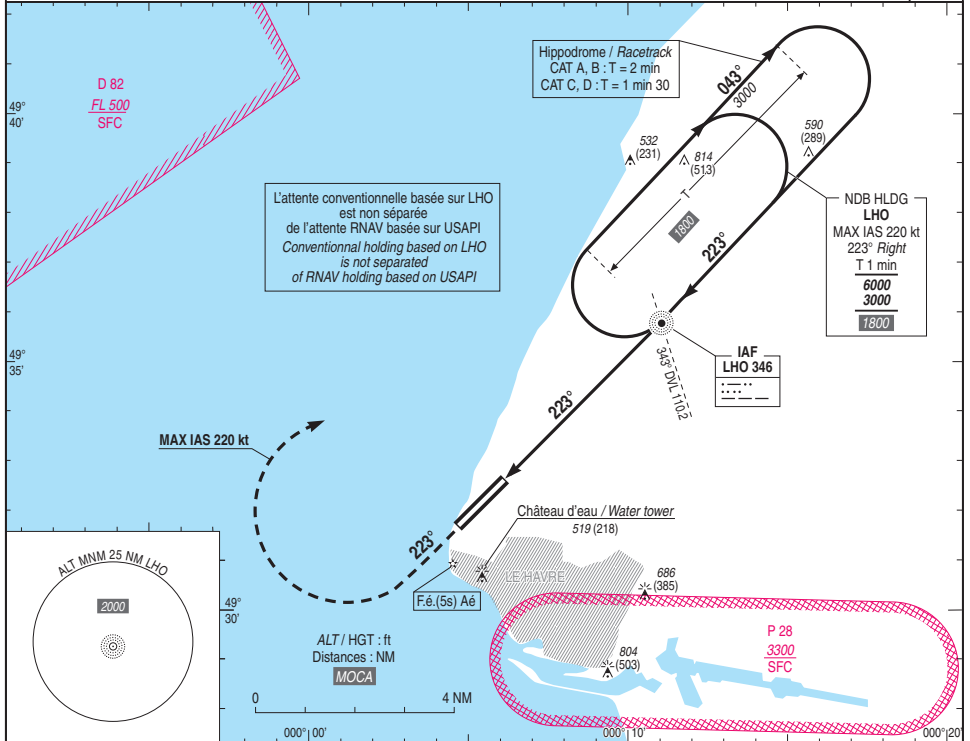
APP : DEAUVILLE Approche / Approach 120.350

AFIS : LE HAVRE Information 135.200

Absence ATS : AIA FR seulement. Obtenir le QNH local sur STAP (FR) ou le QNH de DEAUVILLE sur DEAUVILLE Approche.

AIA FR only. Obtain local QNH from STAP (FR) or DEAUVILLE QNH on DEAUVILLE Approach.

VAR  
0°  
(20)



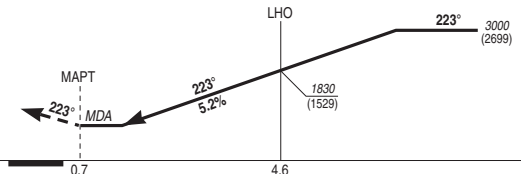
TA : 5000

API : Monter au QDR 223° de LHO (RM 223°). A 800 (499) tourner à droite vers LHO en montée vers 3000 (2699), MAX IAS 220 kt. Ne pas tourner avant le MAPT.

Monter à 1200 (899) avant d'accélérer en palier.

Missed APCH : Climb QDR 223° LHO (MAG 223°). At 800 (499) turn right to LHO up to 3000 (2699), MAX IAS 220 kt. Do not turn before MAPT.

Climb up to 1200 (899) prior to level acceleration.



THR ← (NM)

MNM AD : distances verticales en pieds, RVR et VIS en mètres / vertical distances in feet, RVR and VIS in metres.

REF HGT : ALT THR

| CAT | NDB       |      |     | MVL / Circling (1) |            |           |      |
|-----|-----------|------|-----|--------------------|------------|-----------|------|
|     | MDA (H)   | RVR  | OCH | MDA (H)            | VIS        | MDA (H)   | VIS  |
| A   | 740 (440) | 1500 | 431 | 820 (520)          | 1500       | 920 (620) | 1500 |
| B   |           | 1500 |     | 1600               | 920 (620)  | 1600      |      |
| C   |           | 1600 |     | 2400               | 1020 (720) | 2400      |      |
| D   |           | 1600 |     | 3600               | 1120 (820) | 3600      |      |

Observations : (1) MVL interdites au Sud-Est de la piste / Circling prohibited South-East of RWY (2) HJ seulement / only

|              |        |          |          |          |          |          |          |          |
|--------------|--------|----------|----------|----------|----------|----------|----------|----------|
| NDB-THR      | 4.6 NM | 70 kt    | 85 kt    | 100 kt   | 115 kt   | 130 kt   | 145 kt   | 160 kt   |
| NDB-MAPT     | 3.9 NM | 3 min 58 | 3 min 16 | 2 min 47 | 2 min 25 | 2 min 08 | 1 min 55 | 1 min 44 |
| VSP (ft/min) |        | 370      | 450      | 530      | 610      | 690      | 770      | 850      |



**APPROCHE AUX INSTRUMENTS**

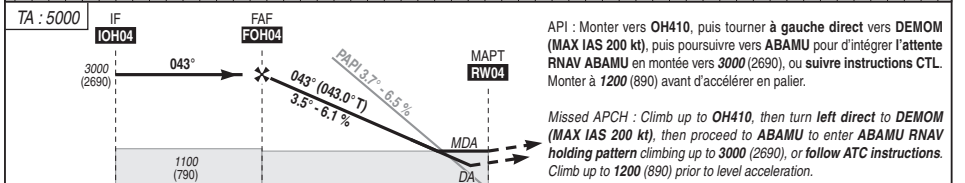
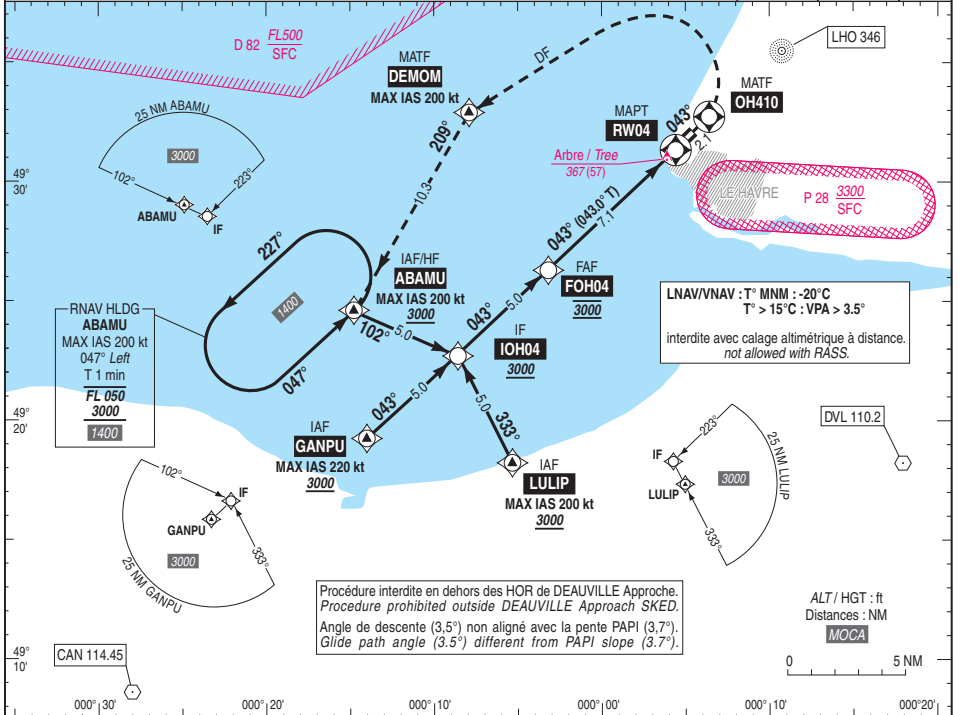
**LE HAVRE OCTEVILLE**

Instrument approach  
CAT A B C D

ALT AD : 313, THR : 310 (12 hPa)

RNP RWY 04

|  |          |                                       |                   |
|--|----------|---------------------------------------|-------------------|
| <p>STAP 135.200<br/>APP : DEAUVILLE Approche / Approach 120.350<br/>AFIS : LE HAVRE Information 135.200<br/>Absence ATS : A/A FR seulement. Obtenir le QNH local sur STAP (FR) ou le QNH de DEAUVILLE sur DEAUVILLE Approche.<br/>A/A FR only. Obtain local QNH from STAP (FR) or DEAUVILLE QNH on DEAUVILLE Approach.</p> | RNP APCH | EGNOS<br>Ch 61884<br>E04A<br>RDH : 49 | VAR<br>0°<br>(20) |
|--|----------|---------------------------------------|-------------------|



API : Monter vers OH410, puis tourner à gauche direct vers DEMOM (MAX IAS 200 kt), puis poursuivre vers ABAMU pour d'intégrer l'attente RNAV ABAMU en montée vers 3000 (2690), ou suivre instructions CTL. Monter à 1200 (890) avant d'accélérer en palier.

Missed APCH : Climb up to OH410, then turn left direct to DEMOM (MAX IAS 200 kt), then proceed to ABAMU to enter ABAMU RNAV holding pattern climbing up to 3000 (2690), or follow ATC instructions. Climb up to 1200 (890) prior to level acceleration.

| CAT | LPV       |      |     | LNAV-VNAV |      |     | LNAV      |      |     | MVL / Circling (1) |      | MVL / Circling absence ATS (1) Sans/Without QNH local (2) |      | DIST RWY04   |          |          |          |
|-----|-----------|------|-----|-----------|------|-----|-----------|------|-----|--------------------|------|---|------|--------------|----------|----------|----------|
|     | DA (H)    | RVR  | OCH | DA (H)    | RVR  | OCH | MDA (H)   | RVR  | OCH | MDA (H)            | VIS  | MDA (H)   | VIS  | NM ALT (HGT) | 7 (2645) | 6 (2275) | 5 (1905) |
| A   | 560 (250) | 1300 | 193 | 610 (300) | 1400 | 300 | 720 (410) | 1900 | 410 | 790 (480)          | 1900 | 890 (580)   | 1900 | 4            | 3        | 2        | 1        |
| B   |           |      | 208 | 630 (320) | 1400 | 314 |           |      |     | 820 (510)          | 1900 | 920 (610)   | 1900 | 1845         | 1475     | 1105     | 730      |
| C   |           |      | 217 | 640 (330) | 1500 | 324 |           |      |     | 920 (610)          | 2400 | 1020 (710)  | 2400 | (1535)       | (1165)   | (795)    | (420)    |
| D   |           |      | 230 | 650 (340) | 1500 | 337 |           |      |     | 1020 (710)         | 3600 | 1120 (810)  | 3600 |              |          |          |          |

Observations / Remarks : (1) MVL interdites au Sud-Est de la piste / Circling prohibited South-East of runway - (2) HJ seulement/only. Panne de guidage GNSS lors de l'approche / Loss of GNSS guidance during approach : voir / see ENR 1.5.

|              |         |       |          |       |          |        |          |        |          |        |          |        |          |        |          |
|--------------|---------|-------|----------|-------|----------|--------|----------|--------|----------|--------|----------|--------|----------|--------|----------|
| FAF - RW04   | 7.13 NM | 70 kt | 6 min 07 | 85 kt | 5 min 02 | 100 kt | 4 min 17 | 115 kt | 3 min 43 | 130 kt | 3 min 17 | 160 kt | 2 min 40 | 185 kt | 2 min 19 |
| VSP (ft/min) |         | 430   | 525      | 620   | 710      | 805    | 990      | 1145   |          |        |          |        |          |        |          |

| RNP RWY 04         |              |                 |                         |          |                   |                    |               |                |                              |                              |              |                              |          |
|--------------------|--------------|-----------------|-------------------------|----------|-------------------|--------------------|---------------|----------------|------------------------------|------------------------------|--------------|------------------------------|----------|
| MAG VAR 2020 0.3 E |              |                 |                         |          |                   |                    |               |                |                              |                              |              |                              |          |
| Ref NAV AID : DVL  |              |                 |                         |          |                   |                    |               |                |                              |                              |              |                              |          |
| RMK                | Leg sequence | Path Terminator | Waypoint Identification | Fly Over | Direction MAG (°) | Direction True (°) | Distance (NM) | Turn direction | MIN Altitude (FL or AMSL ft) | MAX Altitude (FL or AMSL ft) | MAX IAS (kt) | Vertical angle (°) / TCH (m) | Nav Spec |
|                    | HLDG         | IF              | ABAMU                   | -        | -                 | -                  | -             | -              | 3000                         | -                            | -            | -                            | -        |
|                    | INA ABAMU    | TF              | IOH04                   | -        | 102               | 102.6              | 5.0           | -              | 3000                         | -                            | 200          | -                            | RNP APCH |
|                    | INA GANPU    | IF              | GANPU                   | -        | -                 | -                  | -             | -              | 3000                         | -                            | 220          | -                            | RNP APCH |
|                    | INA LULIP    | TF              | IOH04                   | -        | 043               | 042.9              | 5.0           | -              | 3000                         | -                            | -            | -                            | RNP APCH |
|                    |              | IF              | LULIP                   | -        | -                 | -                  | -             | -              | 3000                         | -                            | 200          | -                            | RNP APCH |
|                    |              | TF              | IOH04                   | -        | 333               | 333.1              | 5.0           | -              | 3000                         | -                            | -            | -                            | RNP APCH |
|                    |              | IF              | IOH04                   | -        | -                 | -                  | -             | -              | 3000                         | -                            | -            | -                            | RNP APCH |
|                    |              | TF              | FOH04                   | -        | 043               | 043.0              | 5.0           | -              | 3000                         | 3000                         | -            | -                            | RNP APCH |
|                    | APCH         | TF              | RW04                    | Yes      | 043               | 043.0              | 7.1           | -              | -                            | -                            | -            | -3.49715                     | RNP APCH |
|                    |              | TF              | OH410                   | Yes      | 043               | 043.1              | 2.1           | -              | -                            | -                            | -            | -                            | RNP APCH |
|                    |              | DF              | DEMOM                   | -        | -                 | -                  | -             | L              | -                            | -                            | 200          | -                            | RNP APCH |
|                    |              | TF              | ABAMU                   | -        | 209               | 208.8              | 10.3          | -              | 3000                         | -                            | 200          | -                            | RNP APCH |

Input data

|                                     |               |
|-------------------------------------|---------------|
| Operation Type                      | 0             |
| SBAS Provider                       | 1             |
| Airport Identifier                  | LFOH          |
| Runway                              | 04            |
| Runway Direction                    | 0             |
| Approach Performance Designator     | 0             |
| Route Indicator                     |               |
| Reference Path Data Selector        | 0             |
| Reference Path Identifier           | E04A          |
| LTP/FTP Latitude                    | 493135.5120N  |
| LTP/FTP Longitude                   | 0000439.3100E |
| LTP/FTP Ellipsoidal Height (metres) | 139.5         |
| FPAP Latitude                       | 493229.8210N  |
| Delta FPAP Latitude (seconds)       | 54.3090       |
| FPAP Longitude                      | 0000557.5090E |
| Delta FPAP Longitude (seconds)      | 78.1990       |
| Threshold Crossing Height           | 15.00         |
| TCH Units Selector                  | 1             |
| Glidepath Angle (degrees)           | 3.49          |
| Course Width (metres)               | 105           |
| Length Offset (metres)              | 0             |
| HAL (metres)                        | 40            |
| VAL (metres)                        | 35            |

Output data

|                      |  |
|----------------------|--|
| Data Block           | 10 08 0F 06 0C 04 00 00 01 34<br>30 05 B0 25 41 15 1C 86 08 00<br>73 19 4A A8 01 EE 62 02 2C 81<br>5D 01 64 00 C8 AF 96 5E 30 0A |
| Calculated CRC Value | 96 5E 30 0A  |

Required Additional Data

|                                     |      |
|-------------------------------------|------|
| ICAO Code                           | LF   |
| LTP/FTP Orthometric Height (metres) | 94.5 |
| FPAP Orthometric Height (metres)    | 94.5 |

