

CONSIGNES GENERALES

Voir les volets 40-1 à 40-4 de TOULOUSE BLAGNAC LFBO

CARTE REGIONALE

Voir volet 50-1 de TOULOUSE BLAGNAC LFBO

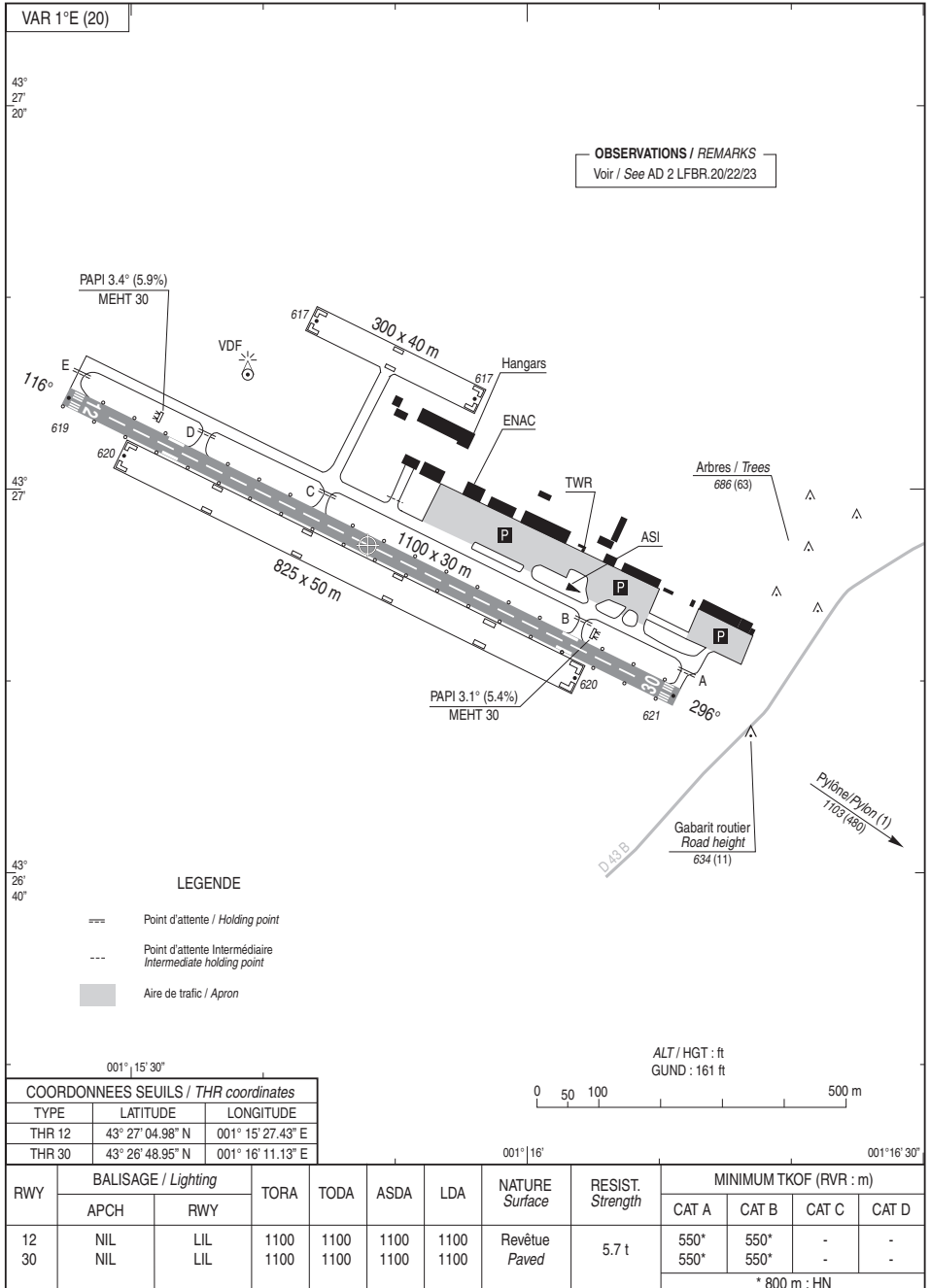
CARTE RADAR

Voir volet 60-1 de TOULOUSE BLAGNAC LFBO

CARTE D'AERODROME
Aerodrome chart

ATIS : 124.575 ☎ 05 34 46 08 36
STAP : 124.575 absence ATS
GND (SOL) : 121.750

MURET LHERM
43 26 57 N - 001 15 49 E
ALT AD : 623 (23 hPa)



DATA

MURET LHERM

POINTS / REPERES ESSENTIELS DES PROCEDURES

Waypoints / Procedures main fixes

Identification	Coordonnées <i>Coordinates</i>		RNAV	CONV	SID STAR	IAC
TW	REF AD2 LFBO.19			X		X
MUT	REF AD2 LFBO.19			X		X
SURUD	REF ENR 4.3		X			X
XUREX	REF ENR 4.3		X			X
FAF NDB RWY 12	43°29'24.7" N	001°09'13.7" E		X		X
IF NDB RWY 12	43°31'19.9" N	001°04'05.1" E		X		X
FBR12	43°29'21.8" N	001°09'13.8" E	X			X
BR420	43°22'21.1" N	001°12'38.8" E	X			X
RW12	43°27'04.98" N	001°15'27.43" E	X			X

Données complémentaires à la page DATA 01

IDENTIFICATION	COORDONNEES	RNAV	CONV
TW	43°31'50.2"N - 001°01'31.0"E		X
MUT	43°28'47.3" N - 001°10'53.6" E		X
SURUD	43°27'15.5"N - 000°58'45.2"E	X	
SULIT	43°23'01.3"N - 001°15'09.2"E	X	X
XUREX	43°32'06.4"N - 001°01'42.3"E	X	

APPROCHE AUX INSTRUMENTS

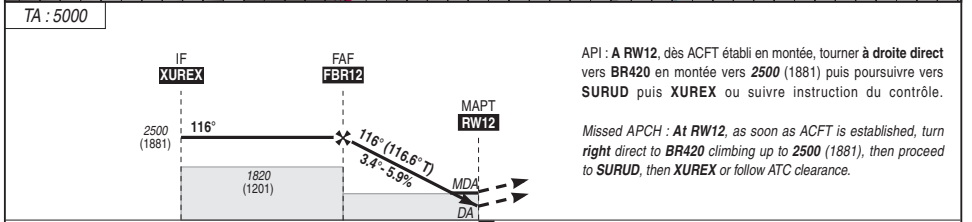
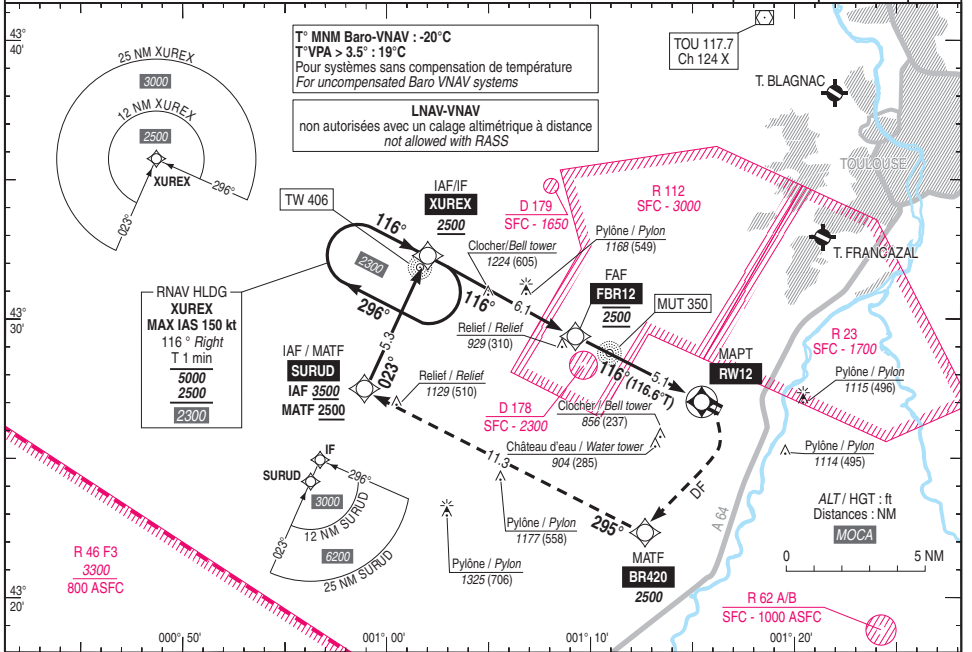
Instrument approach
CAT A B

MURET LHERM

RNP RWY 12

ALT AD : 623, **THR : 619 (23 hPa)**

<p>ATIS MURET 124.575 APP : TOULOUSE Approche / Approach 125.180 (Secteur Ouest/West Sector) - 129.305 (Secteur Est/East Sector) TWR : MURET Tour / Tower 123.200 STAP : 124.575 absence ATIS. Absence ATIS : A/A FR seulement. Obtenir le QNH local sur STAP ou le QNH de TOULOUSE BLAGNAC sur ATIS BLAGNAC, à défaut TOULOUSE Information. A/A FR only: Obtain local QNH on STAP or TOULOUSE BLAGNAC QNH on ATIS BLAGNAC or failing that TOULOUSE Information.</p>	<p>RNP APCH</p>	<p>EGNOS Ch 61870 E12A RDH : 49</p>	<p>VAR 1°E (20)</p>
---	------------------------	--	--



MNM AD : distances verticales en pieds, RVR et VIS en mètres / vertical distances in feet, RVR and VIS in metres. REF HGT : ALT THR

CAT	LPV			LNAV-VNAV			LNAV			MVL / Circling (1)		DIST RW12					
	DA (H)	RVR	OCH	DA (H)	RVR	OCH	MDA (H)	RVR	OCH	MDA (H)	VIS	NM	5	4	3	2	
A	1140 (530)	1500	521	1020 (400)	1500	397	1180 (560)	1500	556	1180 (560)	1500	1280 (660)	1500	2470 (1851)	2110 (1491)	1750 (1131)	1390 (771)
B	1160 (540)	1600	535	1120 (500)	1600	411	1180 (560)	1600	556	1410 (790)	1600	1510 (890)	1600				

Observations / Remarks : (1) MVL interdites au Nord de la piste / Circling prohibited North of RWY.
 Panne de guidage GNSS lors de l'approche / Loss of GNSS guidance during approach : voir / see AIP ENR 1.5.

FAF - RW12	5.1 NM	70 kt 4 min 21	85 kt 3 min 35	100 kt 3 min 03	115 kt 2 min 39	130 kt 2 min 20
VSP (ft/min)		420	510	600	690	780

RNP RWY 12												
RMK	MAG VAR 2020 0.9°E						REF NAV AID :					
Leg sequence	Path Terminator	Waypoint Identification	Fly Over	Direction MAG (°)	Direction True (°)	Distance (NM)	Turn direction	MMN Altitude (FL or AMSL ft)	MAX Altitude (FL or AMSL ft)	MAX IAS (kt)	Vertical angle (°) / TCH (m)	NAV Spec
HLDG	-	XUREX	-	-	-	-	-	-	-	-	-	-
INA SURUD	IF	SURUD	-	-	-	-	-	3600	-	-	-	RNP APCH
	TF	XUREX	-	023	023.9	5.3	-	2500	-	-	-	RNP APCH
INA XUREX	IF	XUREX	-	-	-	-	-	2500	-	-	-	RNP APCH
	IF	XUREX	-	-	-	-	-	2500	-	-	-	RNP APCH
	TF	FBH12	-	116	116.6	6.1	-	2500	2500	-	-	RNP APCH
APCH	TF	RW12	Yes	116	116.6	5.1	-	-	-	-	-3.4° / 15	RNP APCH
	DF	BR420	-	-	-	-	R	-	-	-	-	RNP APCH
	TF	SURUD	-	295	295.9	11.3	-	2500	-	-	-	RNP APCH
	TF	XUREX	-	023	23.9	5.3	-	2500	-	-	-	RNP APCH

Input Data

Parameters	Values
Operation Type	0
SBAS Provider	1
Airport Identifier	LFBR
Runway	12
Runway Direction	0
Approach Performance Designator	0
Route Indicator	
Reference Path Data Selector	0
Reference Path Identifier	E12A
LTP/FTP Latitude	432704.9800N
LTP/FTP Longitude	0011527.4340E
LTP/FTP Ellipsoidal Height (metres)	237.6
FPAP Latitude	432640.2795N
Delta FPAP Latitude (seconds)	-24.7005
FPAP Longitude	0011634.7635E
Delta FPAP Longitude (seconds)	67.3295
Threshold Crossing Height	15.00
TCH Units Selector	1
Glidepath Angle (degrees)	3.40
Course Width (metres)	105.00
Length Offset (metres)	592
HAL (metres)	40.0
VAL (metres)	50.0

Output Data

Data Block	10 12 02 06 0C 0C 00 00 01 32 31 05 28 B6 A5 12 94 2A 8A 00 48 1D 07 3F FF 03 0E 02 2C 81 54 01 64 4A C8 FA CE 64 AB 9E
Calculated CRC Value	CE64AB9E

Required Additional Data (not CRC wrapped)

These additional data are not required for CRC calculation, but they need to be provided to datahouses for procedure coding in ARINC 424 records.

Parameters	Values
ICAO Code	LF
LTP/FTP Orthometric Height (metres)	188.6
FPAP Orthometric Height (metres)	188.6

Reset

Edit

Text Report

File Download

APPROCHE AUX INSTRUMENTS

MURET LHERM

Instrument approach

CAT A B

ALT AD : 623 (23 hPa), THR : 619

NDB RWY 12

ATIS MURET 124.575

APP : TOULOUSE Approche / Approach 125.180 (Secteur Ouest/West Sector) - 129.305 (Secteur Est/East Sector)

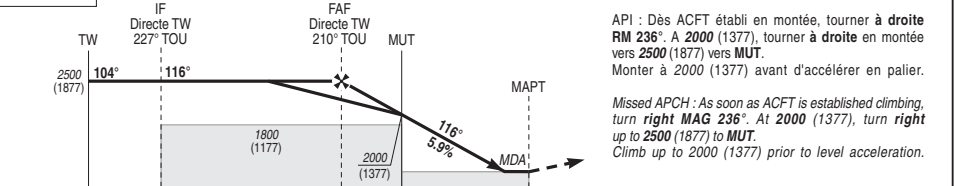
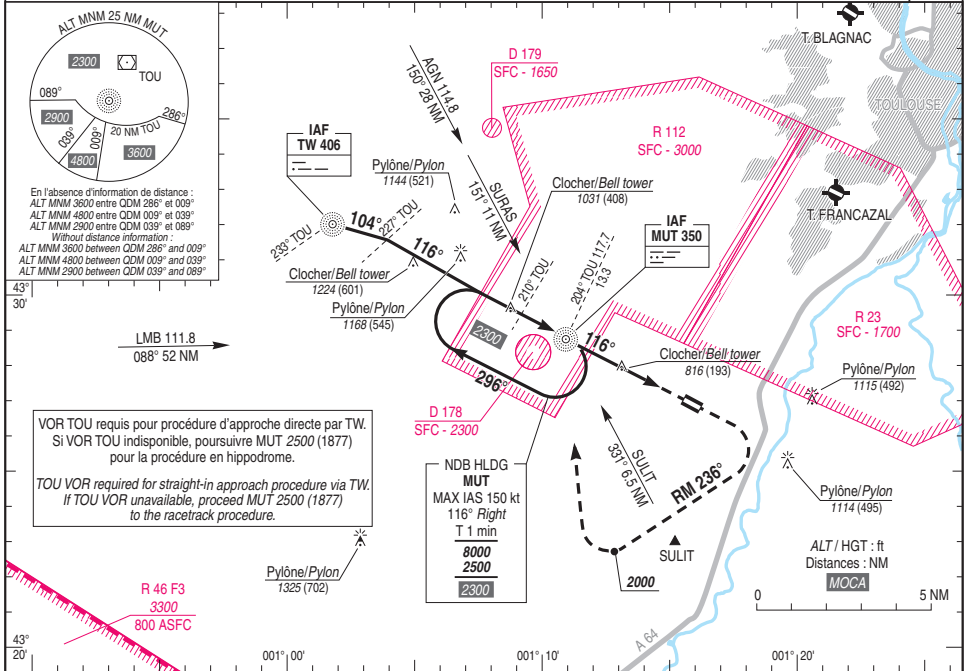
TWR : MURET Tour / Tower 123.200

STAP : 124.575 absence ATS.

Absence ATS : **AJA FR** seulement. Obtenir le QNH local sur STAP ou le QNH de TOULOUSE BLAGNAC sur ATIS BLAGNAC, à défaut TOULOUSE Information.

AJA FR only. Obtain local QNH on STAP or TOULOUSE BLAGNAC QNH on ATIS BLAGNAC or failing that TOULOUSE Information.

VAR
1°E
(20)



CAT	NDB			(1) MVL / Circling (1) absence ATS sans QNH local without local QNH HJ seulement / only			
	MDA (H)	RVR	OCH	MDA (H)	VIS	MDA (H)	VIS
A	1070 (440)	1500	439	1200 (570)	1500	1300 (670)	1500
B	1130 (510)	1600		1400 (780)	1600	1500 (880)	1600

Observations/Remarks : (1) MVL interdites au Nord de la piste / Circling prohibited North of RWY.

MUT - MAPT	3.0 NM	70 kt 2 min 34	80 kt 2 min 15	90 kt 2 min 00	100 kt 1 min 48	110 kt 1 min 38	120 kt 1 min 30	130 kt 1 min 23
VSP (ft/min)		Non disponible / Not available						