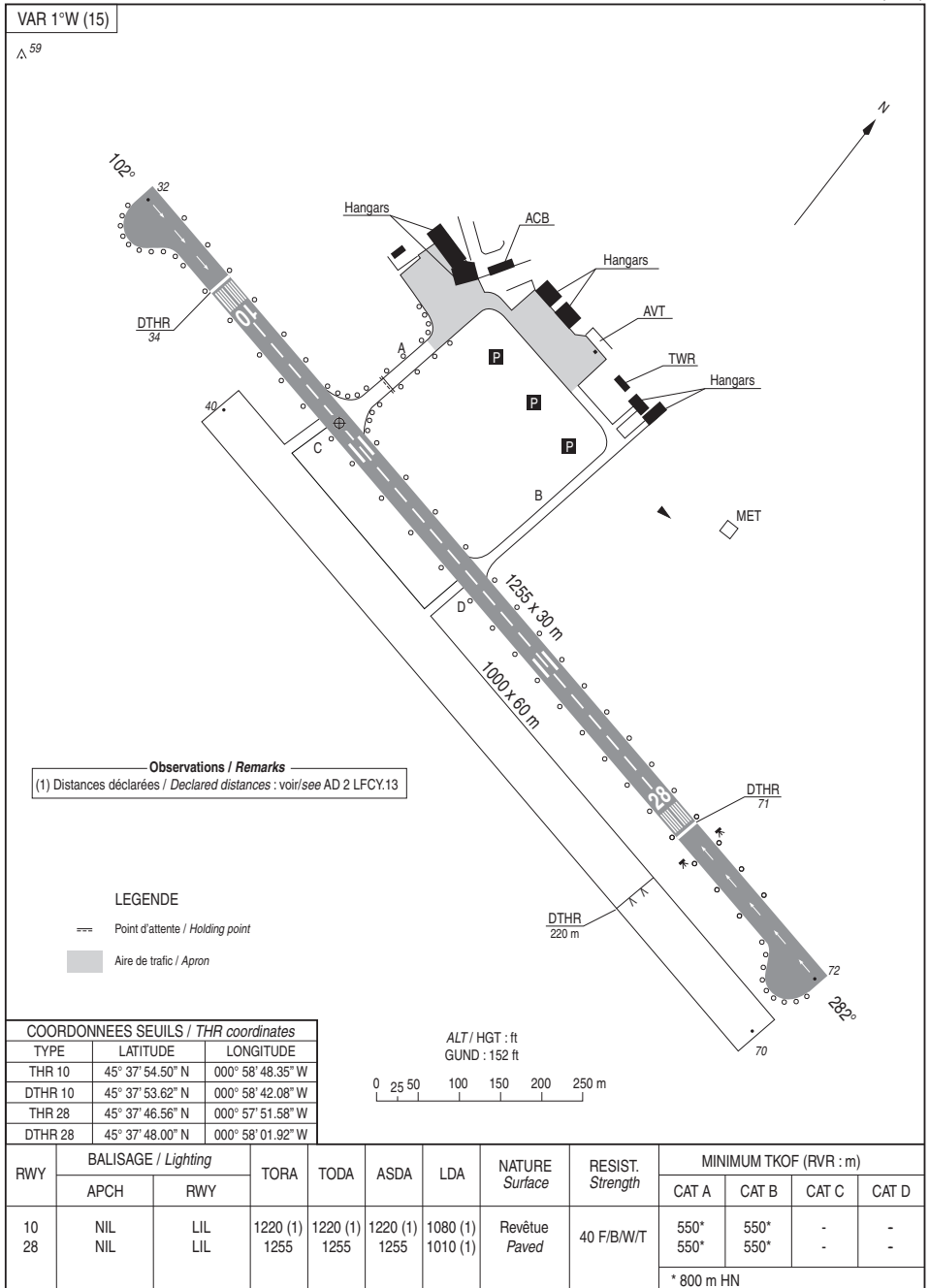


CARTE D'AERODROME
Aerodrome chart

AFIS : ROYAN Information 118.800 (FR seulement / only)

ROYAN MEDIS
45 37 52 N - 000 58 32 W
ALT AD : 72 (3 hPa)



DATA

ROYAN MEDIS

POINTS / REPERES ESSENTIELS DES PROCEDURES
Waypoints/ Procedures mains fixes

Identification	Coordonnées <i>Coordinates</i>	RNAV	CONV	SID STAR	IAC
RY	REF AD 2 LFCY.19	X	X		X
CY281	45°39'52.0"N 000°43'46.3"W	X			X
CY284	45°32'21.0"N 000°50'51.5"W	X			X
CY282	45°32'01.7"N 000°46'01.9"W	X			X
ICY28	45°35'56.9"N 000°44'54.2"W	X			X
FCY28	45°36'38.4"N 000°49'47.0"W	X			X
RW28	45°37'48.00"N 000°58'01.92"W	X			X

Données complémentaires à la page DATA 01

IDENTIFICATION	COORDONNEES	RNAV	CONV
IAF RY	45°36'57.2"N - 000°52'00.4"W	X	X

APPROCHE AUX INSTRUMENTS

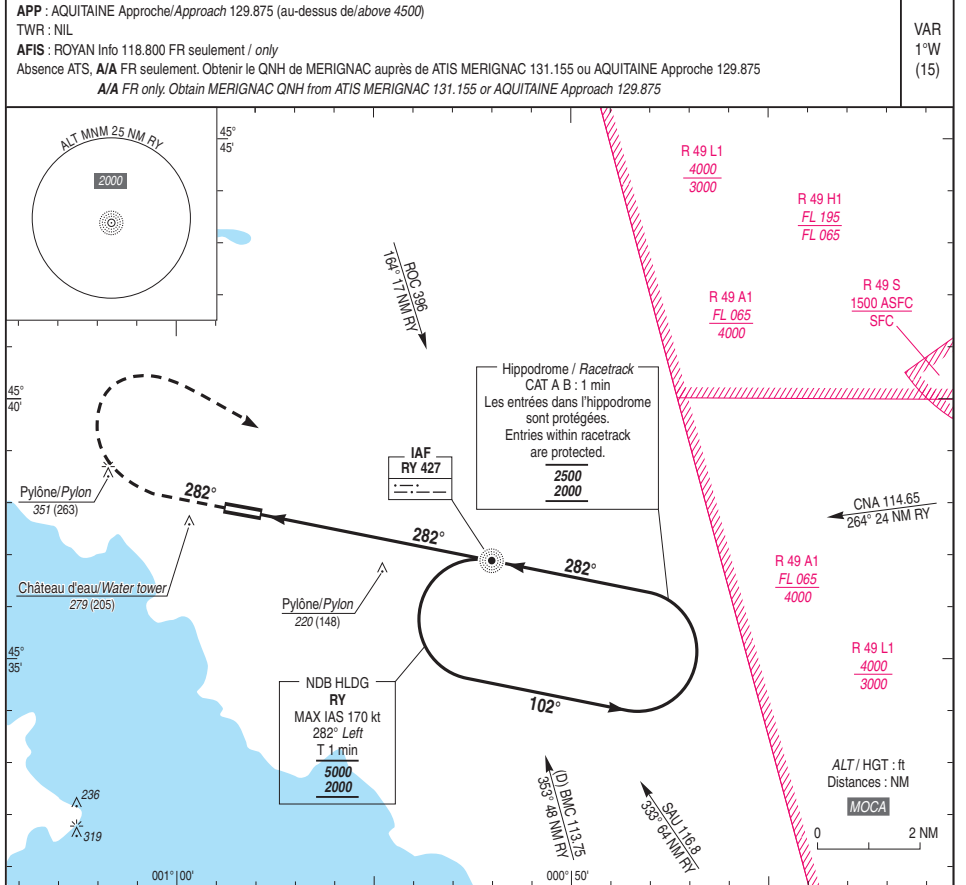
ROYAN MEDIS

Instrument approach

CAT A B

NDB RWY 28

ALT AD : 72 (3 hPa), DTHR : 71



TA : 5000

API : Monter **QDR 282° RY** (RM 282°). A **600 (528)**, tourner à droite vers **RY** en montée vers **2000 (1928)**.
Ne pas tourner avant le MAPT.
 Monter à **900 (828)** avant d'accélérer en palier.

Missed APCH : Climb QDR 282° RY (MAG 282°). At 600 (528), turn right to RY climbing up to 2000 (1928).
Do not turn before MAPT.
 Climb up to **900 (828)** prior to level acceleration.

DTHR ← (NM) 0.6 4.3 REF HGT : ALT AD

MNM AD : distances verticales en pieds, RVR et VIS en mètres./Vertical distances in feet, RVR and VIS in metres.

CAT	NDB			MVL/Circling (1)		MVL/Circling (1)	
	MDA (H)	RVR	OCH	MDA (H)	VIS	MDA (H)	VIS
A	470 (400)	1500	394	650 (580)	1500	880 (810)	1500
B					1600		1600

Observations /Remarks : (1) MVL interdites au Sud de la piste. / (1) Circling prohibited South of RWY.

	70 kt	80 kt	90 kt	100 kt	110 kt	120 kt	130 kt
NDB - MAPT	3.7 NM	3 min 10	2 min 46	2 min 28	2 min 13	2 min 01	1 min 51
VSP (ft/min)		370	420	475	525	580	630
						690	685



APPROCHE AUX INSTRUMENTS

ROYAN MEDIS

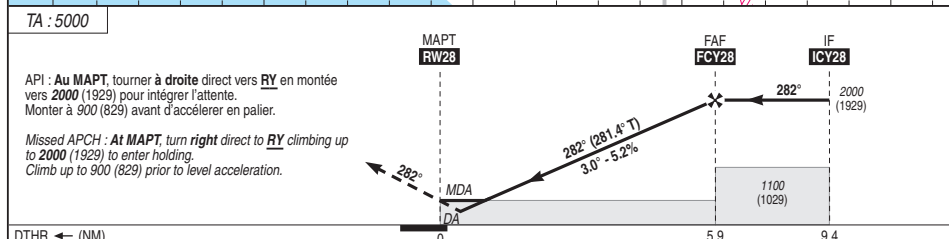
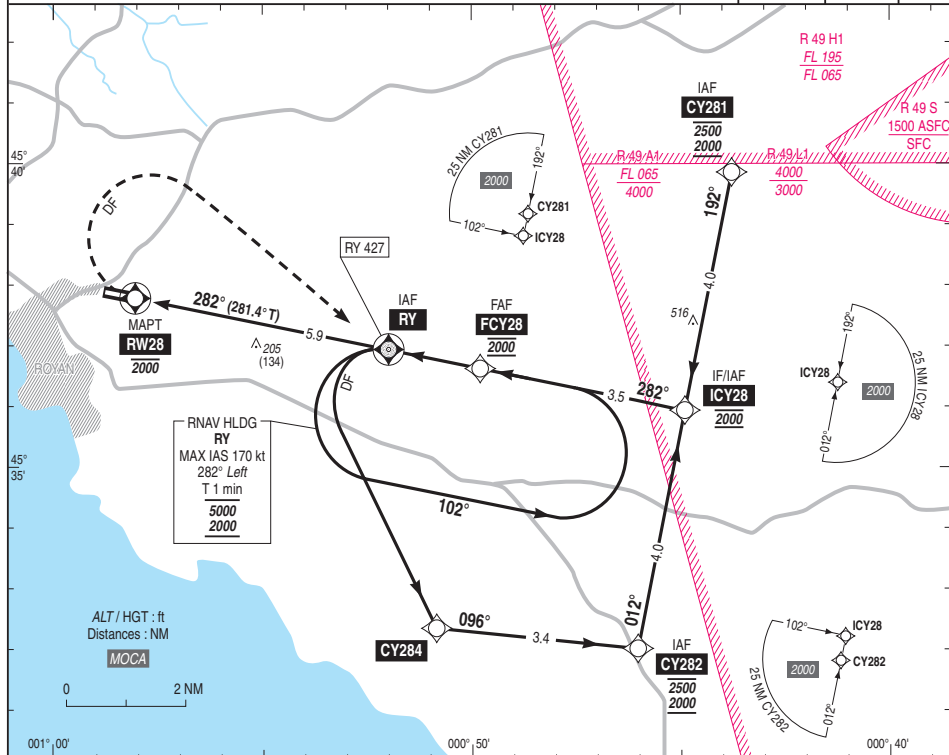
Instrument approach

CAT A B

RNP RWY 28

ALT AD : 72, DTHR : 71 (3 hPa)

APP : AQUITAINE Approche/Approach 129.875 (au-dessus de/above 4500) TWR : NIL AFIS : ROYAN Information 118.800 Absence ATS : AIA FR seulement. Obtenir le QNH de MERIGNAC auprès de ATIS MERIGNAC ou AQUITAINE Approche. AIA FR only. Obtain MERIGNAC QNH from ATIS MERIGNAC or AQUITAINE Approach.	RNP APCH	EGNOS Ch 50048 E28A TCH : 50	VAR 1° W (15)
---	----------	---------------------------------------	---------------------



DTHR ← (NM) 0 5.9 9.4 REF HGT : ALT DTHR

MNM AD : distances verticales en pieds, RVR et VIS en mètres./Vertical distances in feet, RVR and VIS in metres.

CAT	LPV			LNAV			MVL/Circling (1)		MVL/Circling (1) absence ATS HJ seulement/only		DIST RWY28				
	DA (H)	RVR	OCH	MDA (H)	RVR	OCH	MDA (H)	VIS	MDA (H)	VIS	NM	5	4	3	2
A	460 (390)	1500	386	460 (390)	1500	386	650 (580)	1500	880 (810)	1500	1715	1395	1075	760	
B	470 (400)		398	470 (400)		398		1600		1600	(1644)	(1324)	(1004)	(689)	

Observations /Remarks : (1) MVL interdites au Sud de la piste./ Circling prohibited South of RWY.

FAF - MAPT	5.9 NM	70 kt 5 min 03	80 kt 4 min 26	90 kt 3 min 56	100 kt 3 min 32	110 kt 3 min 13	120 kt 2 min 57	130 kt 2 min 43
VSP (ft/min)		370	420	480	530	580	640	690

RNP RWY 28													
RMK	NIL	Path Terminator	Waypoint Identification	Fly Over	Direction MAG (°)	Direction True (°)	Distance (NM)	Turn direction	MINM Altitude (FL or AMSL ft)	MAX Altitude (FL or AMSL ft)	MAX IAS (kt)	Vertical angle (°)/TOCH (ft)	NAV Spec
HLDG		IF	RY										RNP APCH
		DF	CY284	yes				L					RNP APCH
INA RY		TF	CY282		086	095.4	3.4		2000	2500			RNP APCH
		TF	ICY28		012	011.4	4.0	L	2000	2000			RNP APCH
		IF	CY282						2000	2500			RNP APCH
INA CY282		TF	ICY28		012	011.4	4.0		2000	2000			RNP APCH
		IF	CY281						2000	2500			RNP APCH
INA CY281		TF	ICY28		192	191.5	4.0		2000	2000			RNP APCH
		IF	ICY28						2000	2000			RNP APCH
		IF	ICY28						2000	2000			RNP APCH
APCH		TF	FCY28		282	281.4	3.5		2000	2000			RNP APCH
		TF	RW28	yes	282	281.4	5.9		2000	2000		3.0° / 50 ft	RNP APCH
		DF	RY	yes				R					RNP APCH

Input Data

Parameters	Values
Operation Type	0
SBAS Provider	1
Airport Identifier	LFCY
Runway	28
Runway Direction	0
Approach Performance Designator	0
Route Indicator	
Reference Path Data Selector	0
Reference Path Identifier	E28A
LTP/FTP Latitude	453748.0025N
LTP/FTP Longitude	0005801.9205W
LTP/FTP Ellipsoidal Height (metres)	68.1
FPAP Latitude	453758.7335N
Delta FPAP Latitude (seconds)	10.7310
FPAP Longitude	0005918.6665W
Delta FPAP Longitude (seconds)	-76.7460
Threshold Crossing Height	50.0
TCH Units Selector	0
Glidepath Angle (degrees)	3.00
Course Width (metres)	105.00
Length Offset (metres)	672
HAL (metres)	40.0
VAL (metres)	50.0

Output Data

Data Block	10 19 03 06 0C 1C 00 00 01 38 32 05 C5 0F 95 13 7F BD 95 FF A9 16 D6 53 00 6C AB FD F4 01 2C 01 64 54 C8 FA E6 7E 60 2B
Calculated CRC Value	E67E602B

Required Additional Data (not CRC wrapped)

These additional data are not required for CRC calculation, but they need to be provided to datahouses for procedure coding in ARINC 424 records.

Parameters	Values
ICAO Code	LF
LTP/FTP Orthometric Height (metres)	21.7
FPAP Orthometric Height (metres)	21.7

