

# NATIONAL FRA AERODROME CHART

11 AUG 2022

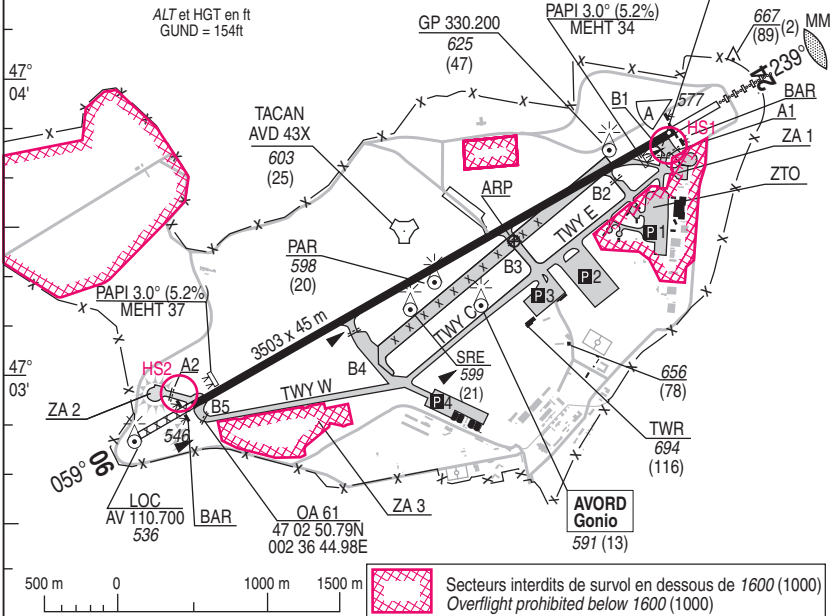
## 01 AVORD LFOA

ALT AD : 578 (21 hPa)

VAR : 1°E (20)

TYPE	LATITUDE	LONGITUDE
THR 06	47°02'52.61"N	002°36'42.40"E
THR 24	47°03'48.70"N	002°39'06.68"E

HS : HOT SPOT  
See 01 B



002° 36'      002° 37'      002° 38'      002° 39'      002° 40'

RWY	LIGHTING		DECLARED DISTANCES				Surface Strength	MINIMUMS TKOF (RVR in m)			
	APPROACH	RWY	TORA	TODA	ASDA	LDA		CAT A. B. C		CAT D. E	
								DAY	NIGHT	DAY	NIGHT
06	NIL	LIH / LIL	3503	3503	3503	3503	Paved	550	800	550	800
24	LHI / LIL OTAN 900m	LIH / LIL	3503	3503	3503	3503		20 F/A/W/T	550		550

### OMNIDIRECTIONAL DEPARTURES

**RWY06** (Alt THR : 546) : Climb **MT 059°** up to **1000** then direct route up to enroute safety level.

**RWY24** (Alt THR : 577) : Climb **MT 239°** up to **7 AVD** then direct route up to enroute safety level.

### MARKINGS - LIGHTINGS :

- Day HI line APP RWY24 – HI/BI RWY06 – Flashing lights RWY06 & 24
- Distance panels: 300 m- TWY – AST PAPI RWY06-24

DIRCAM

DV (Flight director) : 811.702.4054 or 02.48.68.40.54

**USE RESTRICTIONS :**

- AD forbidden to GAT and non radio equipped ACFT
- MIL : LDG are subjected to DV (flight director acceptance) previous day before 1700
- PPR NR must be written in the case 18 of FPL
- RWY24 Right hand turn
- Avoid fly over LFR-9. Follow TWR instructions when LFR-139, 142 & 149 are active
- Wind restrictions : exploitation of the runway is prohibited if the cross wind is above 25kts runway dry or 20kts runway wet.

**OTHER INFORMATIONS :**

- BAR (BLISS AERAZUR 2nd generation - F40 net type) for both QFU

**INSTRUCTIONS :**

- For non based ACFT descent, climbing, APPROACH / APPROACH procedure & exercises flying in the associated aeronautical airspaces of AVORD are subjected to clearance of ESCA OPS supervisor (862.702.6239 or 02.45.41.44.00 extension 26239) or during day to the officer of the watch (811.702.7136 or 02.34.34.71.36). In this case the PPR APPROACH NR must be written in the case 18 of FPL
  - After omnidirectional DEP, plan MOTAL, NEV or LEMIN (first point of FPL route text field).
- For FPL with destination LFOA, pilots have to finish FPL route text field with MOTAL, NEV or LEMIN.

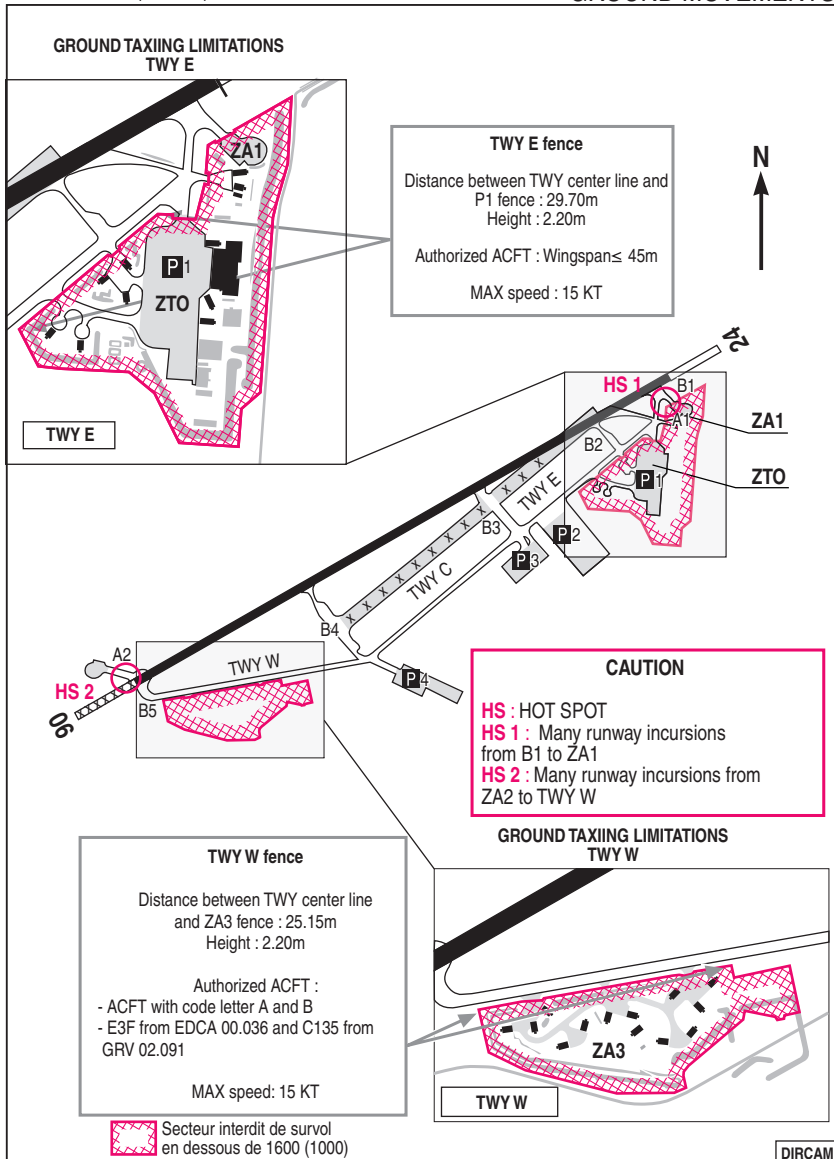
**REFUELING :**

- F18 PN-7 days notice after written request - F34 - Oxygen

**ATS HOR (Summer : -1H) :**

- MON-THU : 0700-1600 (end of flight activity) - HN : O/R before 1500 and PPR before 1500
- FRI : 0700-1400 (end of flight activity)
- SAT, SUN, HOL : the last working day before 1300

DIRCAM



# VISUAL ARR & DEP

ALT AD : 578 (21 hPa)

07 OCT 2021

## 02 AVORD LFOA

### JET RWY06 & 24

ATIS : 138.950 (1)

APP : 119.700 - 386.775 (1) - 373.775 (1) - 142.450

TWR : 122.100 - 142.225 (1) - 398.550 (1) - 257.800

(1) Reserved to MIL

FAF AD

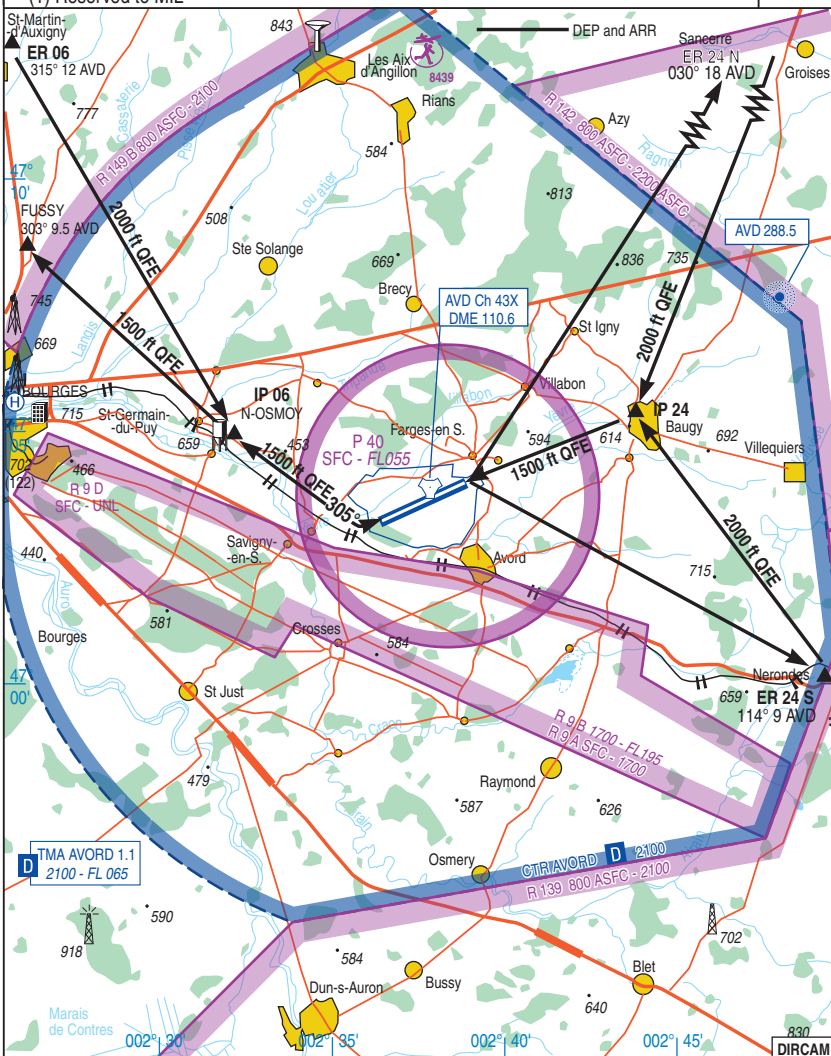
3 Km NNW from AVORD

TEL : 02.34.34.71.36 (Watch Officer)

VAR

1°E

(20)



JET RWY06 & 24

CHG : TEL Watch Officer

02 AVORD LFOA

**VISUAL ARR & DEP INSTRUCTIONS RWY06 & RWY24**

Airspace restriction :

Refer to AIP FRANCE or French Defense 1/1.000.000 aeronautical chart.

**WARNING**

Overflight conditions : AD located in prohibited area (P40). See AIP France.

The flight training school high activity needs a sky attentive surveillance.

Fly over of BOURGES &amp; LF R 9 are forbidden .

Follow TWR clearance when areas : LFR 139 LFR 142 LFR 149 A (800 ft AGL to 1500 ft AGL) are active.

Fly over of ZTO, ZA2 (if active), ZA3 (if active), ZTNA, DVA and EPMu forbidden below 1000 FT AGL.

**ARRIVAL**

Radio contact 5 MIN before entry point

Fly the following entry points at 2000 FT QFE :

**RWY06** ER 06 : 315°/12 NM TAC AVD - ST MARTIN D'AUXIGNY - 47°12'03"N 002°25'43"E.**RWY24** ER 24 N : 030°/18 NM TAC AVD – SANCERRE - 47°18'29"N 002°51'57"E.

ER 24 S : 114°/9 NM TAC AVD - NERONDES - 46°59'24"N 002°49'46"E.

Fly at 2000 FT IP 06 or IP 24.

IP 06 : OSMOY (grain silo) - 47°04'45"N 002°32'11"E.

IP 24 : BAUGY - 47°05'17"N 002°43'08"E.

Fly break at 1500 FT QFE

**RWY06** : break to left hand (**BEGIN DESCENT ONLY ON TURNING FINAL**)**RWY24** : break to right hand

NB : When school high activity RWY06, jet LDG are only performed on long final (GCA or VISUAL).

**DEPARTURE****RWY06** : Climb to 1500 FT QFE & call back exiting area

N : SANCERRE (030°/18 NM TAC AVD)

S : NERONDES (114°/9 NM TAC AVD)

**RWY24** : Climb straight ahead, after railways & before D 976 road turn right heading 305°, avoiding fly over R9 area & BOURGES.

Climb quickly to 1500 FT QFE call back exiting area (across FUSSY), 303°/9,5 NM

AVD.

NATIONAL FRA  
ALT AD : 578 (21 hPa)

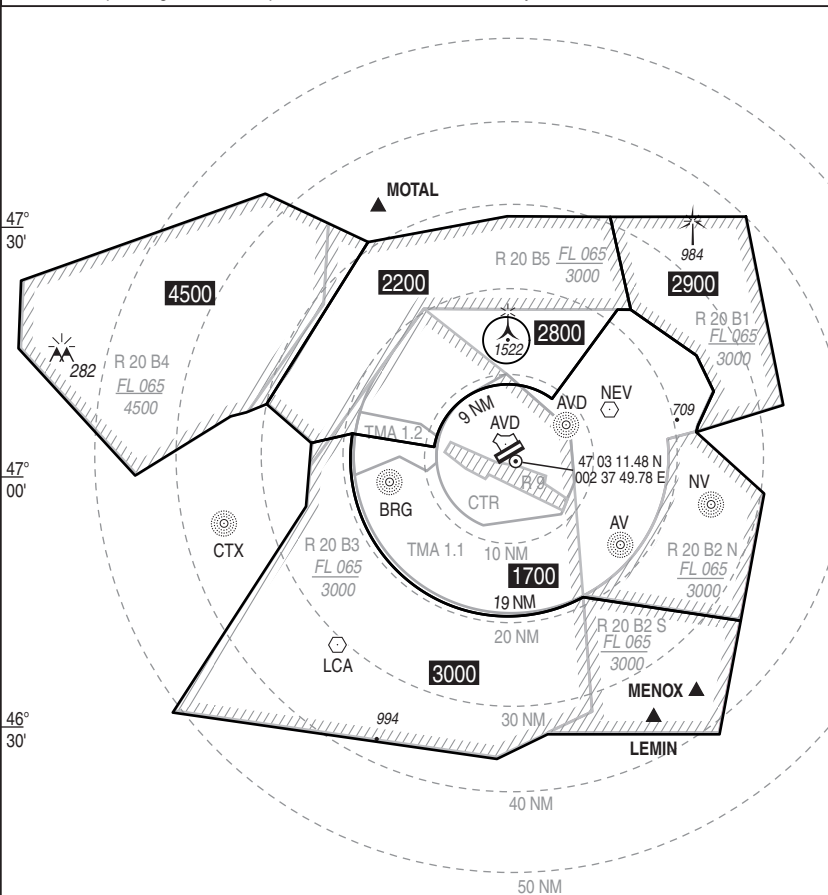
04 NOV 2021

04 AVORD LFOA  
HMG

ATIS : 138.950 (1)  
APP : AVORD APPROACH 119.700 - 373.775 (1) - 142.450  
TWR : AVORD TWR 122.100 - 142.225 (1) - 398.550 (1) (1) Reserved to MIL

VAR  
1°E  
(20)

COMMUNICATION FAILURE : Apply french national regulation.  
HMG corresponding to nominal operational mode of surveillance system.



The published minimum heights integrate a correction for low temperatures.

HGT AAL en ft

001° 30'

002° 00'

002° 30'

003° 00'

003° 30'

DIRCAM

HMG

CHG : Révision.

AVORD LFOA

# NATIONAL FRA INSTRUMENT APPROACH

ALT AD : 578 THR : 546

14 JUL 2022

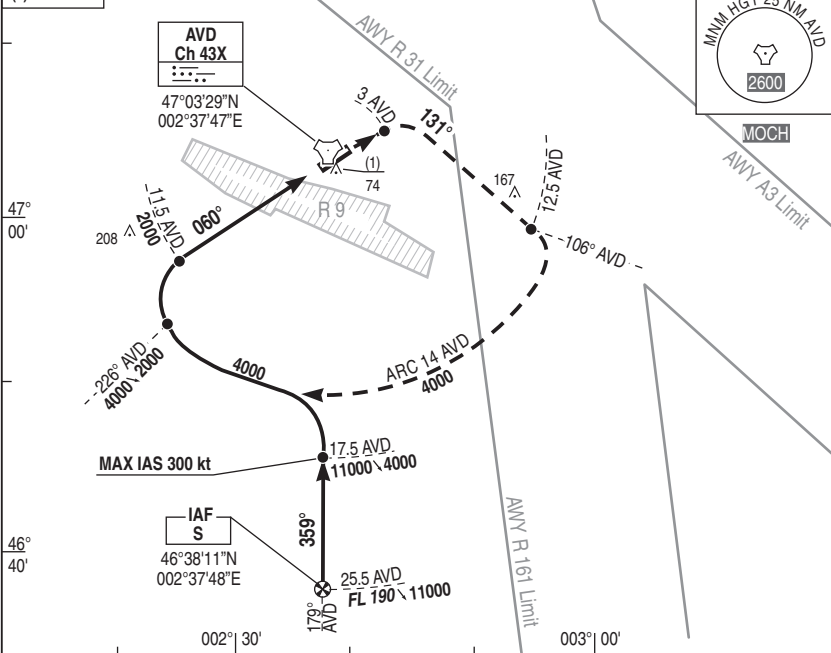
05 AVORD LFOA  
TACAN «S» PAR RWY06

ATIS : 138.950 (1)  
APP : 386.775 (1) - 373.775 (1) - 142.450  
TWR : 142.225 (1) - 398.550 (1) Reserved to MIL

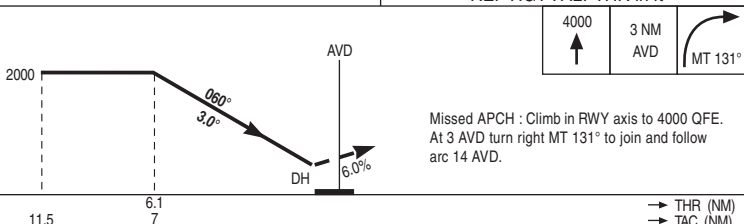
RDH : 49

VAR  
1°E (20)

(1) OCH PAR



REF HGT : ALT THR in ft



Missed APCH : Climb in RWY axis to 4000 QFE.  
At 3 A/D turn right MT 131° to join and follow  
arc 14 A/D.

→ THR (NM)  
→ TAC (NM)

CAT	PAR		
	DH	RVR	OCH
A	250	1300	172 (1)
B			
C			
D			

Remarks : (1) Increased minimums.

DIRCAM

# NATIONAL FRA INSTRUMENT APPROACH

## 06 AVORD LFOA TACAN «S» RWY06

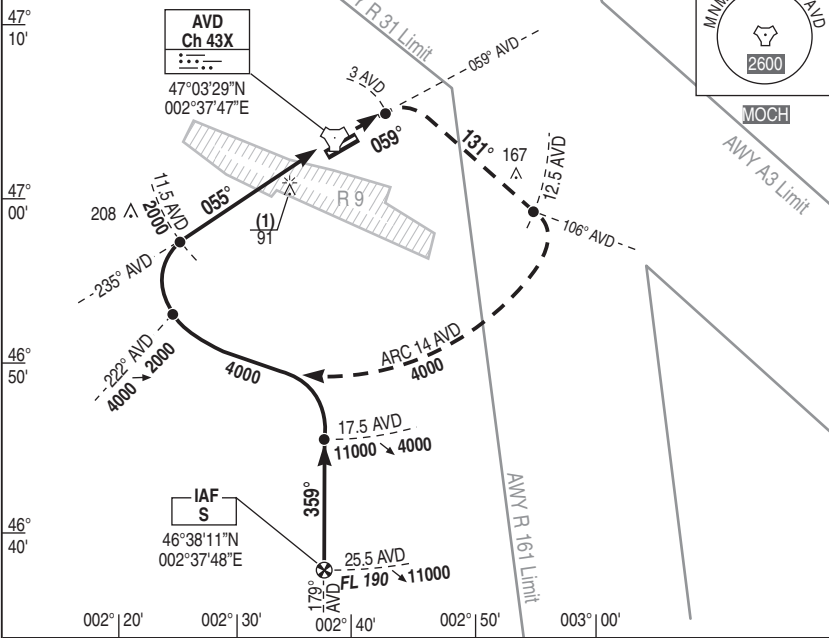
ALT AD : 578 THR : 546

25 FEB 2021

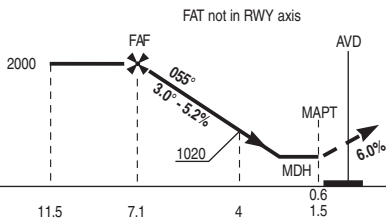
ATIS : 138.950 (1)  
APP : 386.775 (1) - 373.775 (1) - 142.450  
TWR : 142.225 (1) - 398.550 (1) Reserved to MIL

VAR  
1°E (20)

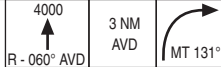
(1) OCH TACAN



REF HGT : ALT THR in ft



API : Climb RDL 059° AVD to 4000 QFE. At 3 AVD turn right MT 131° to join and follow arc 14 AVD.



CAT	TACAN			TACAN	NM	7	6	5	4	3	2
	MDH	RVR	OCH								
A	340	1500	337	TACAN	NM	7	6	5	4	3	2
B											
C	340	1500	337	TACAN	NM	7	6	5	4	3	2
D/E											

Remarks :

DIRCAM

TACAN «S» RWY06

CHG : VAR.

06 AVORD LFOA



# NATIONAL FRA INSTRUMENT APPROACH

07 AVORD LFOA

ALT AD : 578 THR : 577

14 JUL 2022

HPMA TACAN «S» ILS or LOC RWY24

ATIS : 138.950 (1)

APP : 386.775 (1) - 373.775 (1) - 142.450

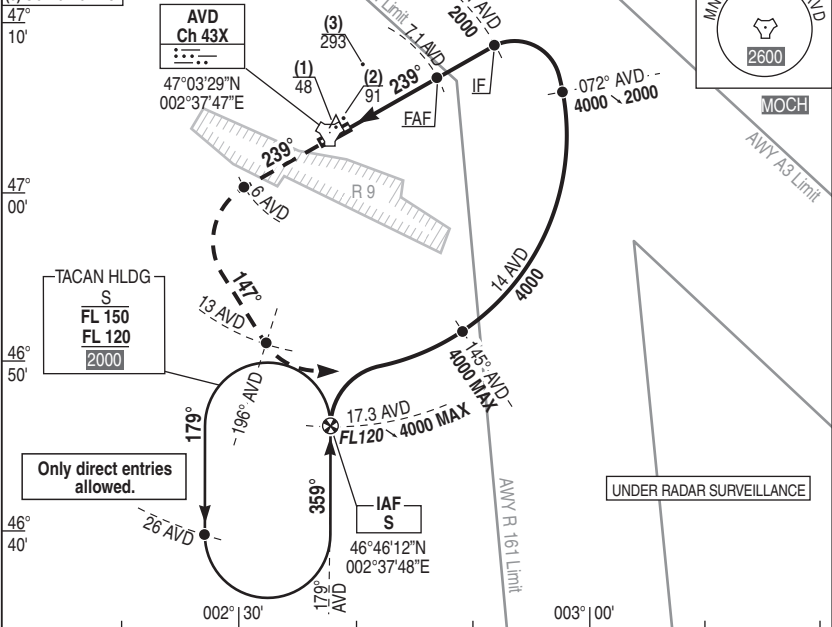
TWR : 142.225 (1) - 398.550 (1) Reserved to MIL

ILS : AV 110.7

RDH : 52

VAR 1°E (20)

- (1) OCH ILS
- (2) OCH LOC
- (3) OCH CIRCLING

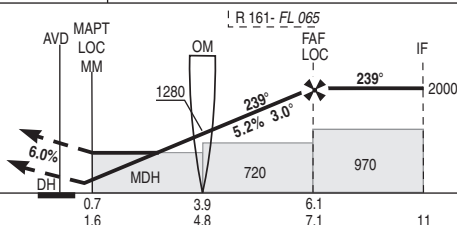


ILS True heading : 240.38°

REF HGT : ALT THR in ft



Missed APCH : Climb straight ahead to 4000 QFE.  
At 6 AVD turn left MT 147° to join 13 AVD / RDL 196° AVD and follow arc 14 AVD.



THR ← (NM)  
DME TAC ← (NM)

CAT	ILS			LOC			CIRCLING			DME TACAN AVD					
	DH	RVR	OCH (1)	MDH	RVR	OCH	MDH	VIS	OCH	NM	6	5	4.8	4	3
A	250	800	147	340	800	337	590	1600	588	1660	1340	1280	1020	710	
B								1600							
C								2400							
D								3600							

Remarks : (1) Increased minimums. VSS checked.

DIRCAM

# NATIONAL FRA INSTRUMENT APPROACH

ALT AD : 578 THR : 577

14 JUL 2022

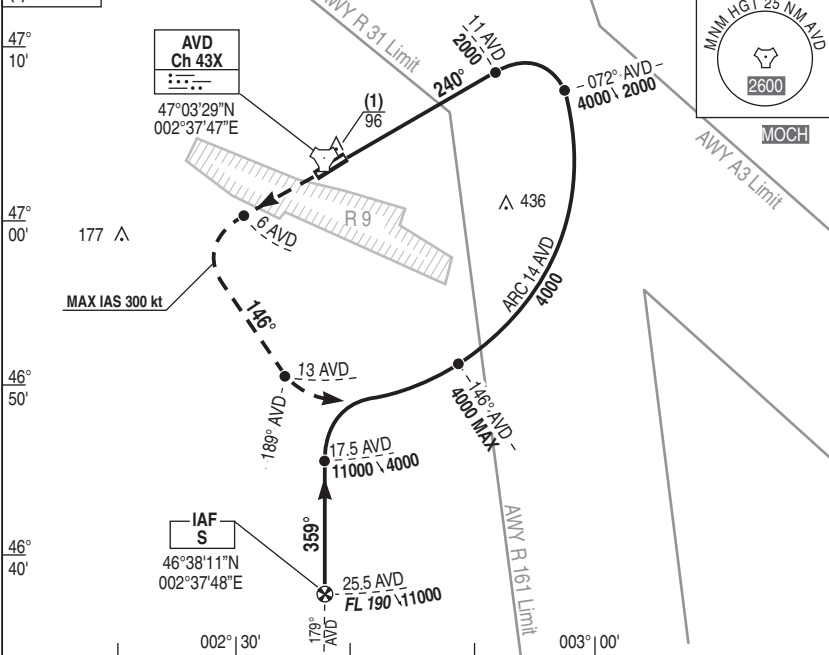
08 AVORD LFOA  
TACAN «S» PAR RWY24

ATIS : 138.950 (1)  
APP : 386.775 (1) - 373.775 (1) - 142.450  
TWR : 142.225 (1) - 398.550 (1) Reserved to MIL

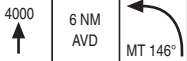
RDH : 52

VAR  
1°E (20)

(1) OCH PAR

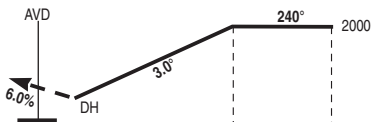


REF HGT : ALT THR in ft



R 161 - FL 065

Missed APCH : Climb straight ahead to 4000 QFE.  
At 6 AVD turn left MT 146° to join and follow arc 14 AVD.



THR ← (NM)  
TAC ← (NM)

6.1 7 11

CAT	PAR		
	DH	RVR	OCH (1)
A	250	800	194
B			
C			
D			

Remarks : (1) Increased minimums.

DIRCAM

TACAN «S» PAR RWY24

CHG : Info PAPI deleted.

08 AVORD LFOA

# NATIONAL FRA INSTRUMENT APPROACH

ALT AD : 578 THR : 577

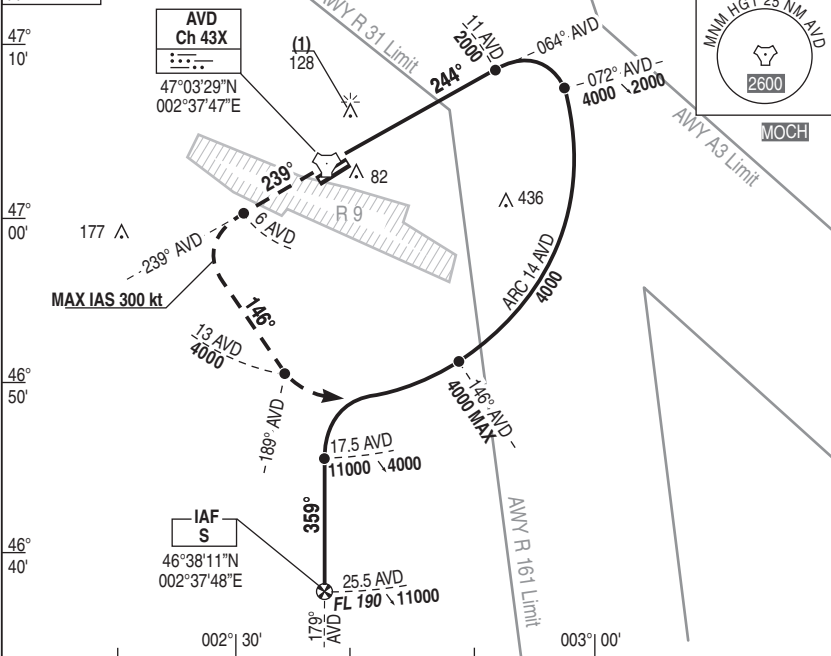
14 JUL 2022

09 AVORD LFOA  
TACAN «S» RWY24

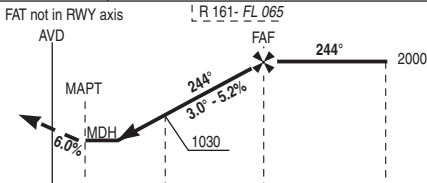
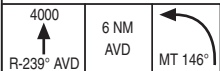
ATIS : 138.950 (1)  
APP : 386.775 (1) - 373.775 (1) - 142.450  
TWR : 142.225 (1) - 398.550 (1) Reserved to MIL

VAR  
1°E (20)

(1) OCH TACAN



REF HGT : ALT THR in ft



API : Climb RDL 239° AVD to 4000 QFE.  
At 6 AVD turn left MT 146° to join  
and follow arc 14 AVD.

THR ← (NM)  
TAC ← (NM)

CAT	TACAN			TACAN						
	MDH	RVR	OCH	NM	2	3	4	5	6	7
A	350	900	342	NM	2	3	4	5	6	7
B				HGT	390	710	1030	1350	1670	1980
C										
D/E										

Remarks :

DIRCAM

NATIONAL FRA  
INSTRUMENT DEPARTURE

SID 01 AVORD LFOA

ALT AD : 578 THR : 546

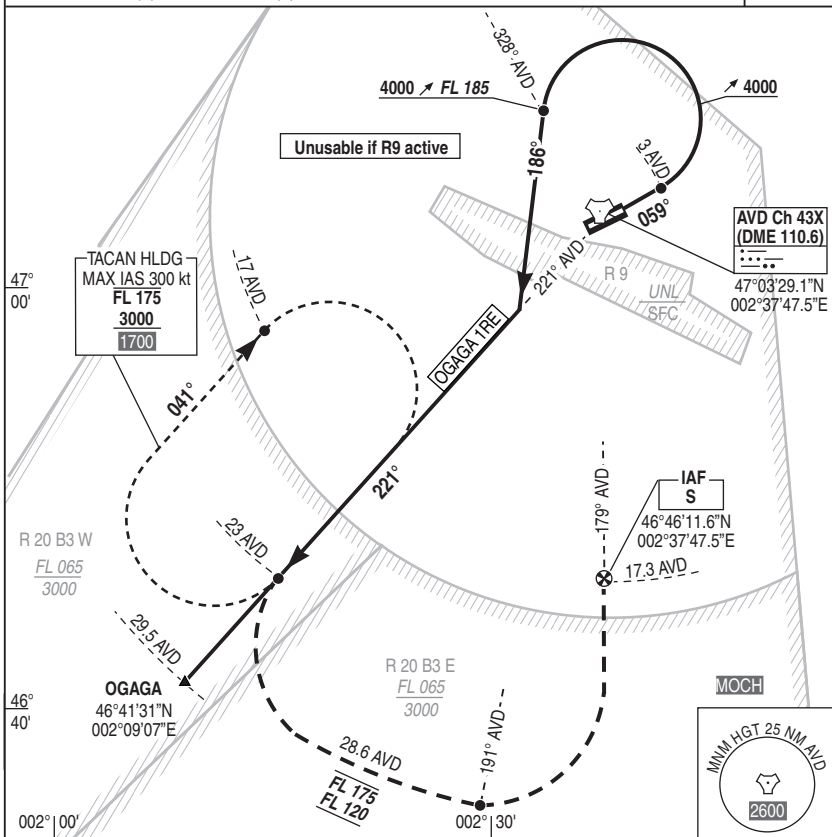
07 OCT 2021

DEPARTURE OGAGA 1RE RWY06

APP : 386.775 (1) - 373.775 (1) - 142.450

VAR  
1°E (20)

TWR : 142.225 (1) - 398.550 (1) Reserved to MIL



REF HGT : ALT THR in ft

**DEPARTURE OGAGA 1RE :**

Climb MT 059°, up to 4000 QFE, at 3 AVD turn left MT 186° to intercept and follow RDL 221° AVD (MT 221°) to OGAGA, crossing RDL 328° AVD climb FL 185.

**MISSED HANDOVER :** Hold at 23 AVD.

On CLR : at 23 AVD, turn left to intercept and follow arc 28.6 AVD.

Crossing RDL 191° AVD, turn left to intercept and follow RDL 179° AVD (MT 359°) to IAF "S".

Communication failure : 7600 and apply french national regulation.

DIRCAM

DEPARTURE OGAGA 1RE RWY06

CHG : Revision.

SID 01 AVORD LFOA

NATIONAL FRA  
INSTRUMENT DEPARTURE

ALT AD : 578 THR : 546

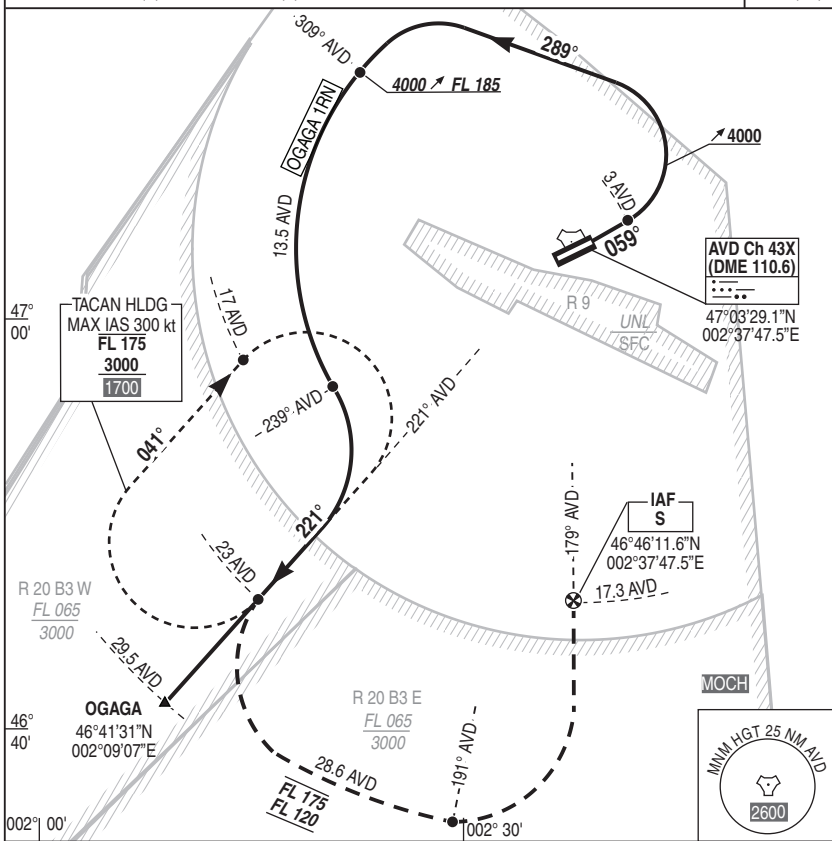
25 FEB 2021

SID 02 AVORD LFOA  
DEPARTURE OGAGA 1RN RWY06

APP : 386.775 (1) - 373.775 (1) - 142.450

TWR : 142.225 (1) - 398.550 (1) Reserved to MIL

VAR  
1°E (20)



**DEPARTURE OGAGA 1RN :**  
Climb MT 059°, up to 4000 QFE, at 3 AVD turn left MT 289° to intercept and follow arc 13.5 AVD.  
Crossing RDL 309° AVD climb FL 185.  
Crossing RDL 239° AVD turn right to intercept and follow RDL 221° AVD (MT 221°) to OGAGA.

**MAX IAS 400 kt.**  
Mini gradient 8.75%.

**MISSED HANDOVER :** Hold at 23 AVD.  
On CLR : at 23 AVD, turn left to intercept and follow arc 28.6 AVD.  
Crossing RDL 191° AVD, turn left to intercept and follow RDL 179° AVD (MT 359°) to IAF "S".

Communication failure : 7600 and apply french national regulation.

DEPARTURE OGAGA 1RN RWY06

CHG : VAR.

SID 02 AVORD LFOA

DIRCAM

NATIONAL FRA  
INSTRUMENT DEPARTURE

SID 03 AVORD LFOA  
DEPARTURE OGAGA 1RW RWY24

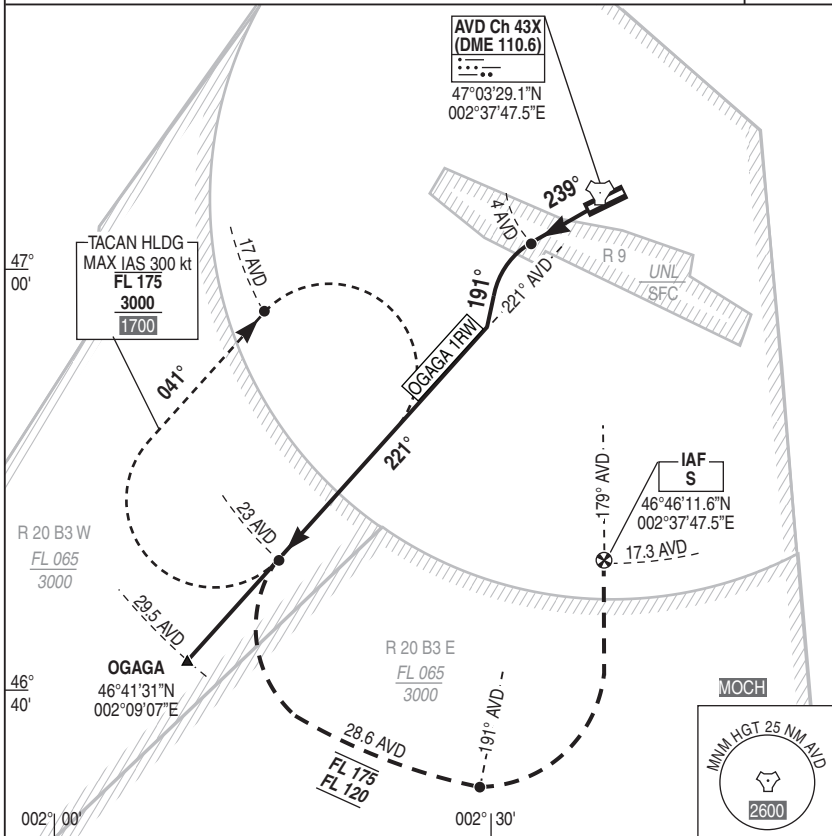
ALT AD : 578 THR : 577

25 FEB 2021

APP : 386.775 (1) - 373.775 (1) - 142.450

TWR : 142.225 (1) - 398.550 (1) Reserved to MIL

VAR  
1°E (20)



REF HGT : ALT THR in ft

**DEPARTURE OGAGA 1RW :**

Climb MT 239°. At 4 AVD turn left MT 191° to intercept and follow RDL 221° AVD (MT 221°) to OGAGA.

MISSED HANDOVER : Hold at 23 AVD.

On CLR : at 23 AVD, turn left to intercept and follow arc 28.6 AVD.

Crossing RDL 191° AVD, turn left to intercept and follow RDL 179° AVD (MT 359°) to IAF "S".

Communication failure : 7600 and apply french national regulation.

DIRCAM

DEPARTURE OGAGA 1RW RWY24

CHG : VAR.

SID 03 AVORD LFOA