

NATIONAL FRA AERODROME CHART

10 OCT 2019

01 BORDEAUX MERIGNAC LFB

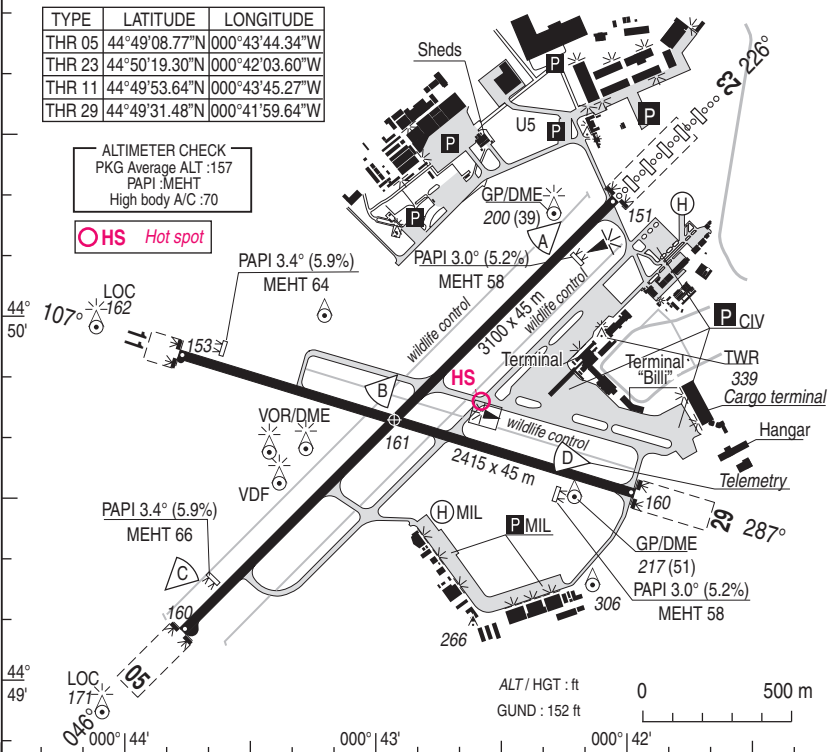
ALT AD : 166 (6 hPa)

VAR 0°(15)

TYPE	LATITUDE	LONGITUDE
THR 05	44°49'08.77"N	000°43'44.34"W
THR 23	44°50'19.30"N	000°42'03.60"W
THR 11	44°49'53.64"N	000°43'45.27"W
THR 29	44°49'31.48"N	000°41'59.64"W

ALTIMETER CHECK
PKG Average ALT : 157
PAPI : MEHT
High body A/C : 70

HS Hot spot



RWY	LIGHTING		DECLARED DISTANCES				Surface Strength	MINIMUMS TKOF (RVR in m)			
	APPROACH	RWY	TORA	TODA	ASDA	LDA		CAT A	CAT B	CAT C	CAT D
05	NIL	LIH	2700-3100*	3100-3500*	2700-3100*	3100	Paved	150	150	150	200
23	LIH 900 m	LIH	3100	3500	3100	3100	64 F/C/W/T	150	150	150	200
11	NIL	LIH	2365	2765	2365	2415	Paved	550	550	550	550
29	NIL	LIH	2415	2575	2415	2415	53 F/C/W/T	550	550	550	550

* On ATC clearance for heavy ACFT (H). Require when starting up.

RWY 23 : LVTO RVR < 150m authorized
RVR MNM : 75 m

MARKING : RWY 05/23 : coded centerline LIH - RWY 23 : THR RWY ends LIH, TDZ LIH
RWY 05/11/29 : THR RWY ends LIH - TWY P1 P2 P3 P4 P5 C : Axis lights

REFUELING : F18 -F34

ATS HOR : H 24

RESTRICTIONS : Refer to MIAM AD2 LFB (PPR MANDATORY)

INSTRUCTIONS : JET ACFT in OAT type "Victor" flight which destination is Bordeaux-Mérignac had to contact Aquitaine APP before for pick up and radar vectoring RWY 23.

DIRCAM

44 49 43N - 000 42 55W

CHG : Traffic areas, terminal.

01 BORDEAUX MERIGNAC LFB

VISUAL ARR & DEP

ALT AD : 166 (6 hPa)

02 DEC 2021

02 BORDEAUX MERIGNAC LFBG

JET ARR / DEP RWY05 / 23 & 11 / 29

APP : 129.875 - 126.725 (S)

TWR : 118.300

GND : 121.900

CIV AD opened to MIL

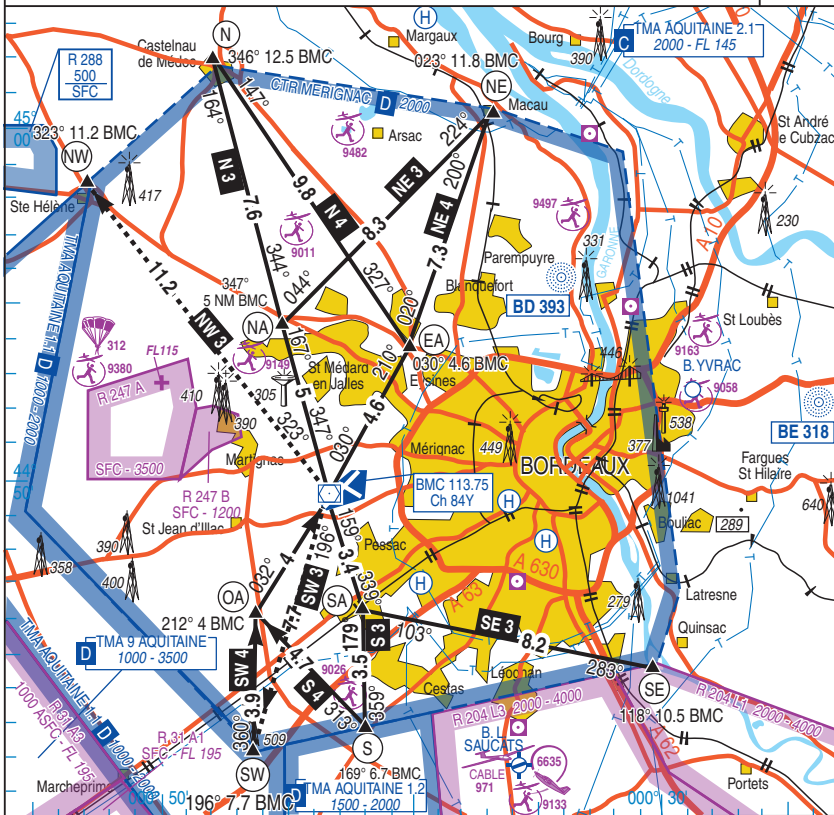
10 Km W from BORDEAUX

TEL : 05.56.55.80.48

VAR

0°

(15)



DIRCAM

JET ARR / DEP RWY05 / 23 & 11 / 29 CHG : AEM 9380, Creation AEM 9149 & 9163. 02 BORDEAUX MERIGNAC LFBG

PROCEDURES AND SPECIAL INSTRUCTIONS**General AD operating conditions**

Engine tests should have been carried out before taxi request.

From 1st APR to 31st OCT, due to ACFT stands congestion, obtaining a stand is subject to request before DEP, to the airport manager SA-ADBM by FAX. This procedure does not apply to based ACFT, State and Medical ACFT.

Use of the crew facilities is compulsory: BRIA , Meteorology, Taxes, Customs and Police.

GLD and ULM prohibited within the CTR.

For all departing ACFT without FPL, report prior notice of flight to ATS reporting office (ARO).

VFR Routes

These routes are intended to : - special VFR conditions
- VFR environmental respect

Routes ALT : 1500 ft AMSL except particular clearance.

Transit within AQUITAINE FIS

Flight information service given on FREQ AQUITAINE.

Information to VFR flights inside class E and G relevant from AQUITAINE FIS can be interrupted without any forecast.

In that case each class D airspace transit must be cleared on AQUITAINE Approach FREQ **sector BW on 129.875 or BE on 119.275.**

Arrival procedures

ACFT bound for LFBD must call 3 MIN before overflying of entry points :

- MERIGNAC TWR if flying \leq 2000 ft AMSL.

- AQUITAINE INFO if flying $>$ 2000 ft AMSL.

Clearing via inactive RWY :

- considered as effective as soon as ACFT nose crosses FLA way (bird control).

- Subject to ATC clearance and prohibited by night.

Departing procedures

SW exit : pilots' attention is drawn toward the ZIT of BARP proximity and the necessity to adapt their navigation.

Night VFR

Radio contact with AQUITAINE Approach compulsory before entering D airspaces.

AD Traffic surveillance equipment : AD equipped with primary and secondary surveillance radar.

Special radiocommunication instructions**Radiocommunication failure on arrival**

Squawk **A 7600**.

If failure occurs before the reception of CTR entering clearance, ACFT shall not enter the airspace.

If failure occurs inside the CTR :

-before having received traffic pattern integration clearance, leave the CTR by the most suitable VFR route.

-after having received traffic pattern integration clearance, continue landing as cleared.

Radiocommunication failure on departure

Before TKOF: do not take off.

After TKOF: squawk **A 7600** and leave CTR according to last clearance (route and altitude)

RMK: FREQ MERIGNAC OPS 143.175 for MET INFO, stopover REQ, in case of diversion, EVASAN or VIP.

Radio contact 15 MIN before land for non based ACFT to MIL area or requiring the assistance of a MIL stopover.

ESCALE MILITAIRE BA106 / ARMY : 05 33 89 81 05 / 05 57 53 61 04 - RSFTA : LFB DYXX

