

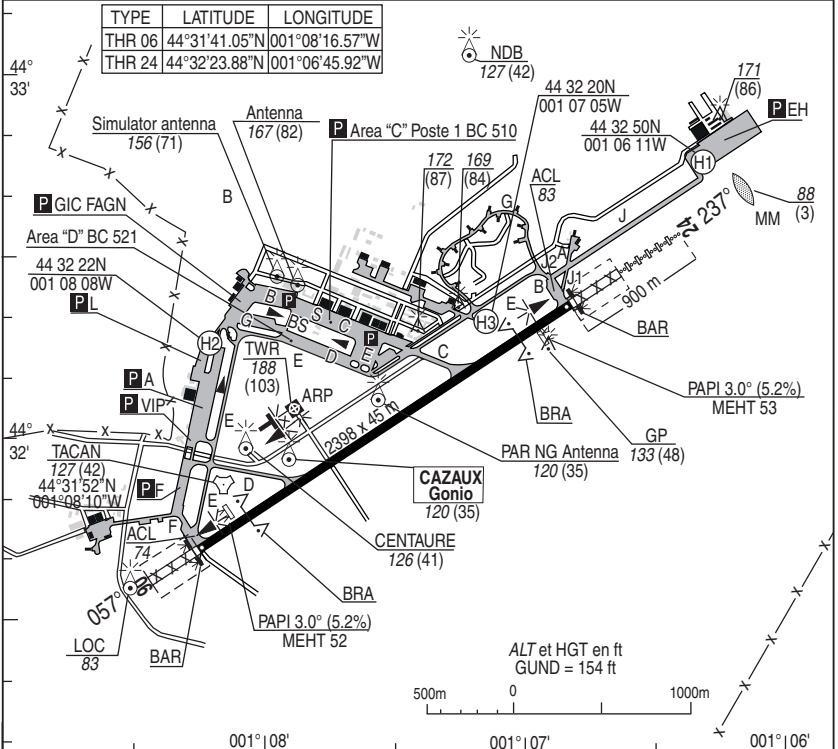
NATIONAL FRA AERODROME CHART

11 AUG 2022

01 CAZAUX LFBC

ALT AD : 85 (3 hPa)

VAR : 0°E (20)



RWY	LIGHTING		DECLARED DISTANCES				Surface	Strength	MINIMUMS TKOF (RVR in m)			
	APPROACH	RWY	TORA	TODA	ASDA	LDA			CAT A	CAT B	CAT C	CAT D
06	NIL	LIH	2398	2716	2398	2398	Paved	550	550	550	550	
24	Axial 900m	LIH	2398	2712	2398	2398	30 F/C/W/U	550	550	550	550	

OMNIDIRECTIONAL DEPARTURES

RWY 06 (Alt THR : 74) : Climb **MT 057°** until **4 CAA**, then direct route up to enroute safety altitude (1).

RWY 24 (Alt THR : 83) : Climb **MT 237°** until **4 CAA**, then direct route up to enroute safety altitude (1).

(1) Minimum climb gradient : 8.75%

MARKINGS - LIGHTINGS :

- Day lighting : LIH line APP RWY 24
- LIH RWY 06 & 24
- Flashing lights & PAPI (3°slope)
- RWY 06 & 24 Remaining distance panels Left side : 300 m

DIRCAM

DV (Flights Director) : 865.120.3810 / 05.40.51.05.36 / 06.49.56.26.97

USE RESTRICTIONS

- LDG submitted to Flight director agreement (Agreement N° in field 18 FPL)

OTHER INFORMATIONS

- BAR RWY06 & 24- PA RWY 06 : 315m - RWY 24 : 307m
- RWY 06: PAPI slope origin not as PAR
- RWY 24: PAPI slope origin not as ILS

INSTRUCTIONS

- Let down: APP CTL assume permeability with firing and bombardment areas.
 - Closed Beware of the clearance is requested.
 - BRA RWY 06 (391m BAR 06) BRA RWY 24 (386m BAR 24)
- If QFU change expect 20 MIN before implementation.

REFUELING

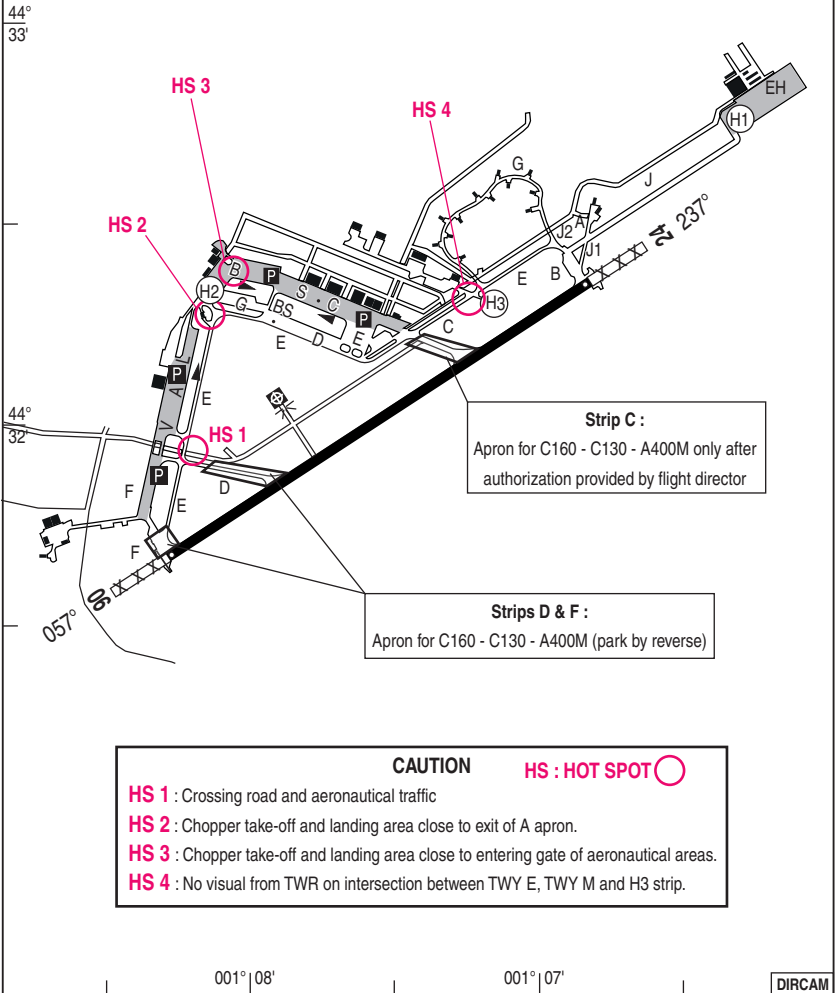
- F18-F34 – Oxygen

ATS HOR

- MON-THU : 0730-1610 and PPR before 1500
- FRI : 0730/-1430 before 1100
- SAT-SUN-HOL : PPR previous working day before 1100
- SUMMER (-1 Hr).

DIRCAM

GROUND TAXIING LIMITATIONS C160 - C130 - A400M
TWY E forbidden



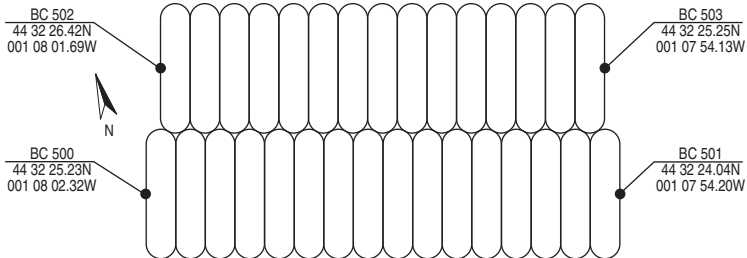
Strip C :
Apron for C160 - C130 - A400M only after authorization provided by flight director

Strips D & F :
Apron for C160 - C130 - A400M (park by reverse)

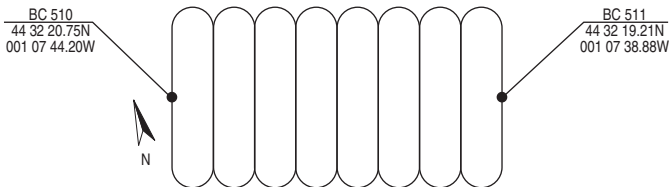
CAUTION **HS : HOT SPOT** ○

HS 1 : Crossing road and aeronautical traffic
HS 2 : Chopper take-off and landing area close to exit of A apron.
HS 3 : Chopper take-off and landing area close to entering gate of aeronautical areas.
HS 4 : No visual from TWR on intersection between TWY E, TWY M and H3 strip.

AREA "B"



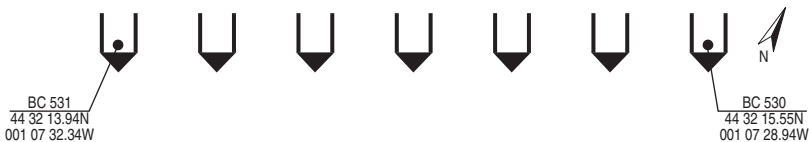
AREA "C"



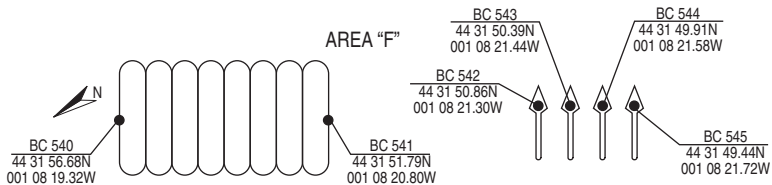
AREA "D"

BC 520 : 44 32 14.43N 001 07 41.56W
BC 521 : 44 32 18.25N 001 07 54.81W

AREA "E"



AREA "F"



DIRCAM

VISUAL ARR & DEP

ALT AD : 85 (3 hPa)

22 APR 2021

02 CAZAUX LFBC

JET RWY06

APP : Transit 232.600 (1) - 142.450 (1) 119.600
 Radar : 251.500 (1) - 265.625 (1) - Climb 277.300 (1)
 TWR : 375.975 (1) - 118.400
 GND : 257.800 (1) - 122.100 (1) Reserved to MIL

AD FAF non GAT
 8 NM South ARCACHON
 TEL : 05.40.51.06.20
 Ext : 24066

VAR
 0°E
 (20)



JET RWY06

CHG : Del R 91, Modif R 31 A1 & R 31 A3, AEM 9404, Creation R 289. 02 CAZAUX LFBC

22 APR 2021

VISUAL ARR & DEP INSTRUCTIONS

Airspace restriction :

Refer to AIP FRANCE or French Defense 1/1.000.000 aeronautical chart

ARRIVALS :

Before entering area , contact CAZAUX APP before reaching 30 NM TACAN.

Fly at 2000 ft QFE (or under cloud ceiling) at 350 kt at the following points :

ER 06 N : 316°/8 NM TACAN CAA (abeam CAP FERRET)**ER 06 S** : 146°/14 NM TACAN CAA (N-YCHOUX).**N ARRIVAL** :Join "T" point (TRENCAIT), then IP 06 (W edge of Lake of CAZAUX).**S or E ARRIVAL**: Join "L" point (South point of CAZAUX Lake), then IP 06 (W edge of Lac de CAZAUX).

Contact TWR when ordered by APP.

Break to the left (Right on clearance) at 1500 ft QFE.

DEPARTURES:After TKOF climb to MAX 800 ft QFE till end of RWY then 1500 ft QFE (or under cloud ceiling) and contact CAZAUX APP. Fly to "F" point (S FACTURE), then own navigation.

Report leaving area.

USE RESTRICTIONS

Areas DGA/EM, R 148, R 170 A / B associated to CALAMAR firing centre : flying over is forbidden unless Clearance.

Over flying of BANC d' ARGUIN is forbidden below 1000 ft QFE.

Beware of high activity on ARCACHON - LA TESTE DE BUCH AD and BISCARROSSE AD.

NOISE ABATEMENT PROCEDURE (NAP)

When "NAP" is in use, heights of circuits are increased by 1000 ft until IP for a break arrival at 1500 ft QFE.

DIRCAM

VISUAL ARR & DEP

ALT AD : 85 (3 hPa)

22 APR 2021

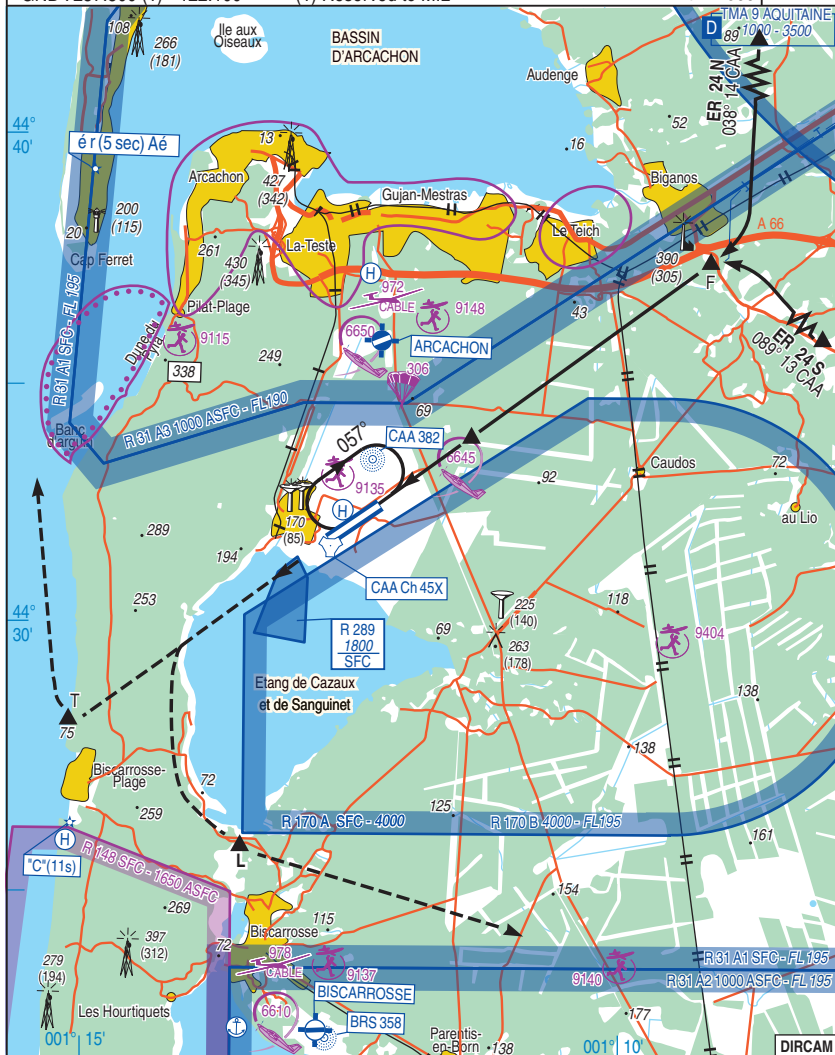
04 CAZAUX LFBC

JET RWY24

APP : Transit 232.600 (1) - 142.450 (1) 119.600
 Radar : 251.500 (1) - 265.625 (1) - Climb 277.300 (1)
 TWR : 375.975 (1) - 118.400
 GND : 257.800 (1) - 122.100 (1) Reserved to MIL

AD FAF non GAT
 8 NM South ARCACHON
 TEL : 05.40.51.06.20
 Ext : 24066

VAR
 0°E
 (20)



JET RWY24

CHG : Del R 91, Modif R 31 A1 & R 31 A3, AEM 9404, Creation R 289.

04 CAZAUX LFBC

22 APR 2021

VISUAL ARR & DEP INSTRUCTIONS

Airspace restriction :

Refer to AIP FRANCE or French Defense 1/1.000.000 aeronautical chart.

ARRIVALS :

Before entering area, contact CAZAUX APP before reaching 30 NM TACAN.

Fly at 2000 ft QFE (or under clouds layer) at 350 kt at the following entry points :

ER 24 N : 038°/14 NM TACAN CAA (LUBEC) .**ER 24 S** : 089°/13 NM TACAN CAA (Motorway interchange).

Join point "F" (S FACTURE), then IP 24 (3 NM on RWY axis).

Contact TWR when ordered by APP.

Fly break right hand (left hand on clearance) at 1500 ft QFE.

DEPARTURES :After TKOF climb to 800 ft QFE MAX till end of RWY then 1500 ft QFE (or under cloud layer) and contact CAZAUX APP.**DEPARTURE N** : Join point "T" (TRENCAIT) then own navigation.**DEPARTURE SW** : Join point "L" (South point of CAZAUX Lake), then own navigation.

Report leaving area.

USE RESTRICTIONS:

Areas DGA/EM, R 148, R170 A / B associated to CALAMAR firing centre: flying over is forbidden unless clearance.

Overflying of BANC d' ARGUIN is forbidden below 1000 ft QFE.

Beware of high activity on ARCACHON - LA TESTE DE BUCH AD and BISCARROSSE AD

NOISE ABATEMENT PROCEDURE (NAP)

When "NAP" is in use, heights of circuits are increased by 1000 ft until IP for a break arrival at 1500 ft QFE.

NATIONAL FRA

ALT AD : 85 (3 hPa)

17 JUN 2021

06 CAZAUX LFBC

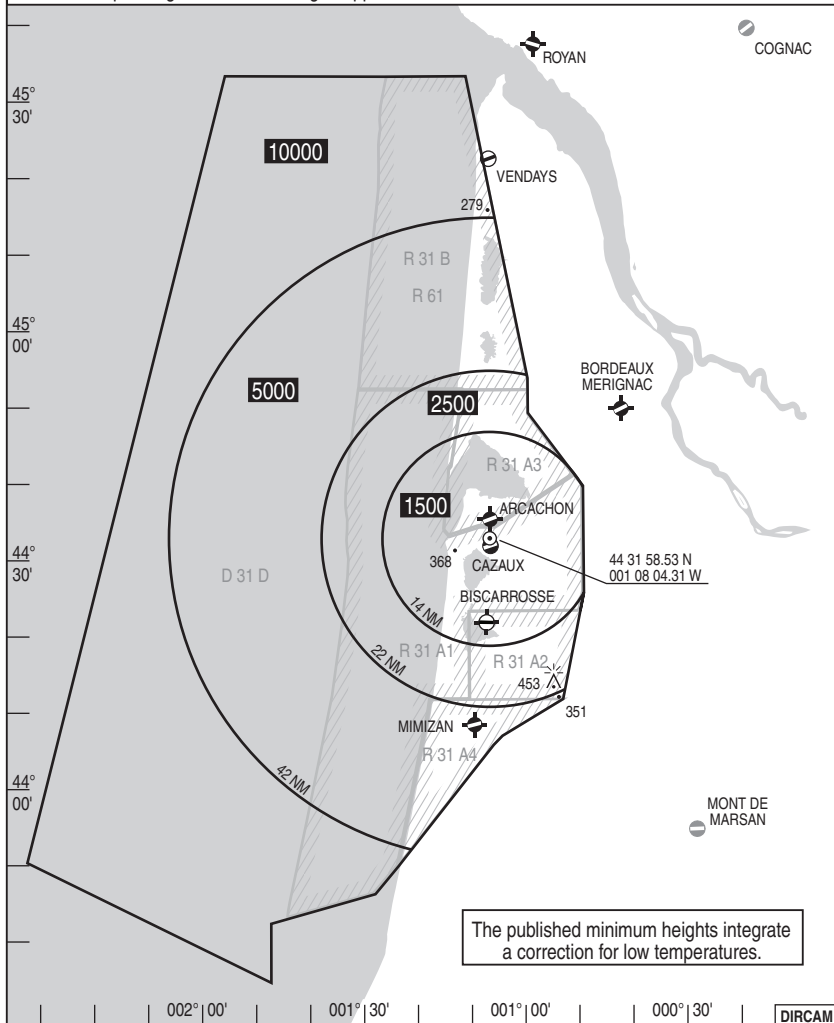
HMG

APP : transit 232.600 (1) - 142.450 - 119.600
 radar 251.500 (1) - 265.625 (1) - Climb 277.300 (1)
 TWR : 375.975 (1) - 118.400 GND : 257.800 (1) - 122.100

(1) Reserved to MIL

VAR
 0°E
 (20)

COMMUNICATION FAILURE : Apply french national regulation.
 HMG corresponding to normal working of approach surveillance means.



NATIONAL FRA INSTRUMENT APPROACH

ALT AD : 85 THR : 74

17 JUN 2021

07 CAZAUX LFBC
TACAN / PAR N RWY06

APP : Transit 232.600 (1) 142.450 (1) 119.600 - Radar 251.500 (1) 265.625 (1)

- Climb 277.300 (1)

TWR : 375.975 (1) 118.400 GND : 257.800 (1) 122.100 (1) Reserved to MIL

RDH : 50

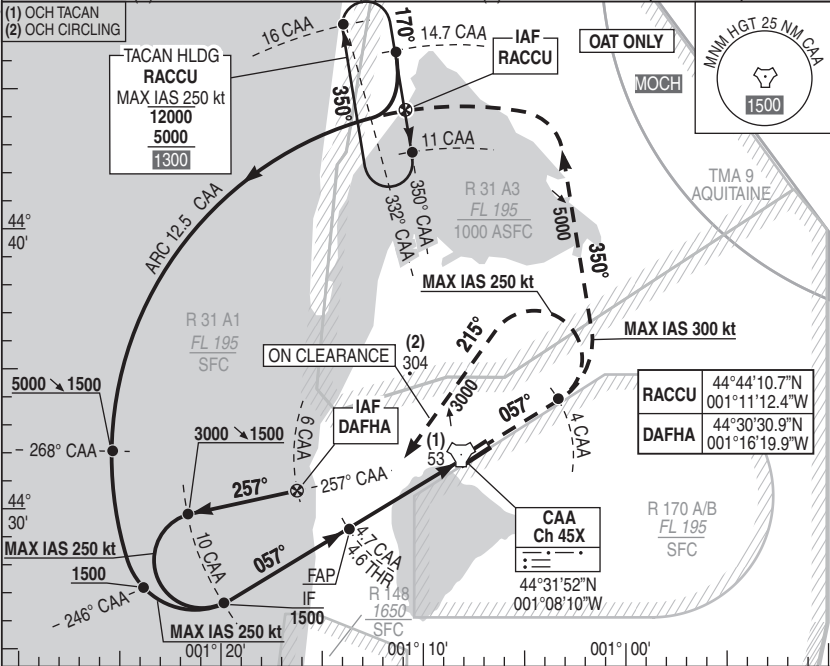
VAR
0°E (20)

(1) OCH TACAN
(2) OCH CIRCLING

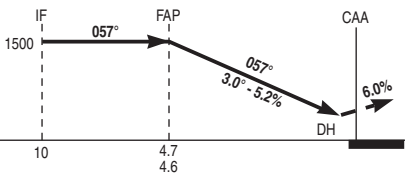
TACAN HLDG
RACCU
MAX IAS 250 kt
12000
5000
1300

IAF
RACCU

OAT ONLY



REF HGT : ALT THR in ft



RACCU missed APCH: Climb straight ahead up to 5000 ft QFE. At 4 CAA turn left MT 350° to intercept and follow ARC 12.5 CAA to RACCU.

CAT	PAR (1)			CIRCLING (2)			ON CLEARANCE
	DH	RVR	OCH	MDH	VIS		
A	250	1300	152	810	1600		DAFHA missed APCH: Climb straight ahead up to 3000 ft QFE. At 4 CAA turn left MT 215° to intercept and follow RDL 257° CAA to DAFHA.
B					1600		
C					2400		
D/E					3600		

Remarks : (1) Increased minimums. (2) Day only.

DIRCAM

TACAN / PAR N RWY06

CHG : Modif R 31 A1.

07 CAZAUX LFBC

NATIONAL FRA INSTRUMENT APPROACH

ALT AD : 85 THR : 74

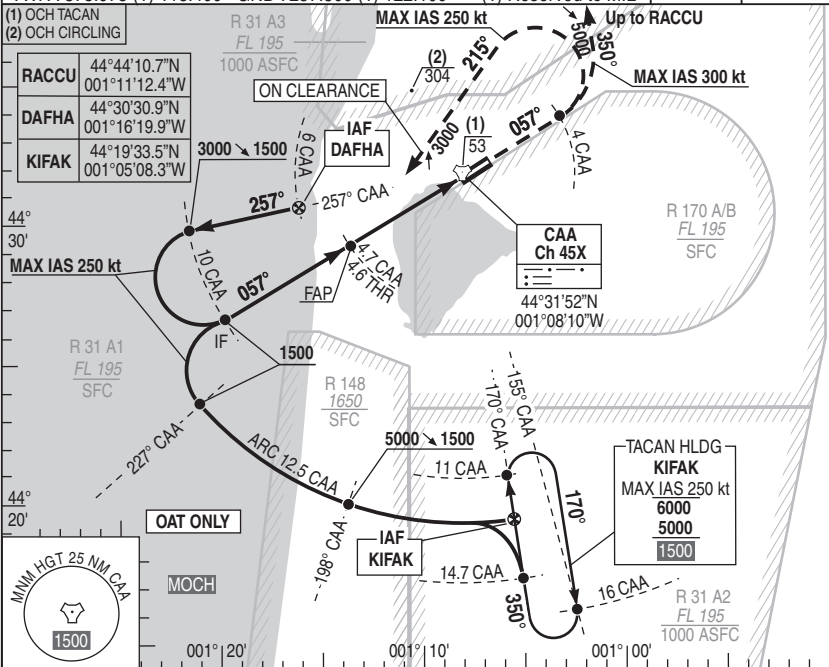
17 JUN 2021

08 CAZAUX LFBC
TACAN / PAR S RWY06

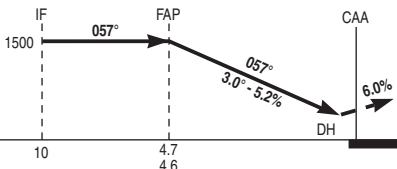
APP : Transit 232.600 (1) 142.450 (1) 119.600 - Radar 251.500 (1) 265.625 (1)
- Climb 277.300 (1)
TWR : 375.975 (1) 118.400 GND : 257.800 (1) 122.100 (1) Reserved to MIL

RDH : 50

VAR
0°E (20)



REF HGHT : ALT THR in ft



RACCU missed APCH: Climb straight ahead up to 5000 ft QFE. At 4 CAA turn left MT 350° to intercept and follow ARC 12.5 CAA to RACCU.

→ TAC (NM)
→ THR (NM)

CAT	PAR (1)			CIRCLING (2)		ON CLEARANCE DAFHA missed APCH: Climb straight ahead up to 3000 ft QFE. At 4 CAA turn left MT 215° to intercept and follow RDL 257° CAA to DAFHA.
	DH	RVR	OCH	MDH	VIS	
A	250	1300	152	810	1600	ON CLEARANCE
B					1600	
C					2400	
D/E					3600	

Remarks : (1) Increased minimums. (2) Day only.

DIRCAM

NATIONAL FRA INSTRUMENT APPROACH

ALT AD : 85 THR : 74

17 JUN 2021

09 CAZAUX LFBC
SRA / PAR RWY06

APP : Transit 232.600 (1) 142.450 (1) 119.600 - Radar 251.500 (1) 265.625 (1)

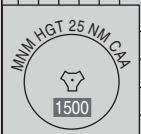
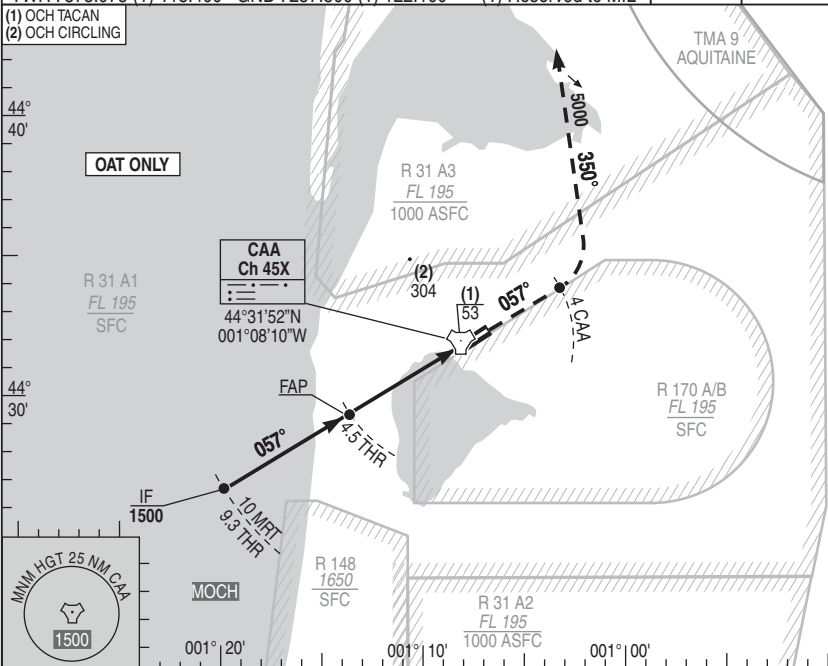
- Climb 277.300 (1)

TWR : 375.975 (1) 118.400 GND : 257.800 (1) 122.100 (1) Reserved to MIL

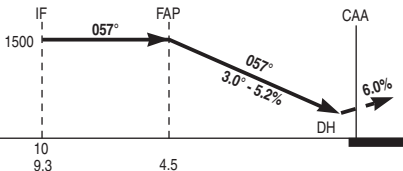
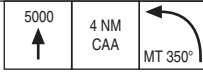
RDH : 50

VAR
0°E (20)

(1) OCH TACAN
(2) OCH CIRCLING



REF HGT : ALT THR in ft



Missed APCH: Climb straight ahead up to 5000 ft QFE. At 4 CAA, turn left MT 350° then follow CTL instructions.

→ MRT (NM)
→ THR (NM)

CAT	PAR (1)			CIRCLING (2)	
	DH	RVR	OCH	MDH	VIS
A	250	1300	152	810	1600
B					1600
C					2400
D/E					3600

Remarks : (1) Increased minimums. (2) Day only.

DIRCAM

SRA / PAR S RWY06

CHG : Modif R 31 A1.

09 CAZAUX LFBC

NATIONAL FRA INSTRUMENT APPROACH

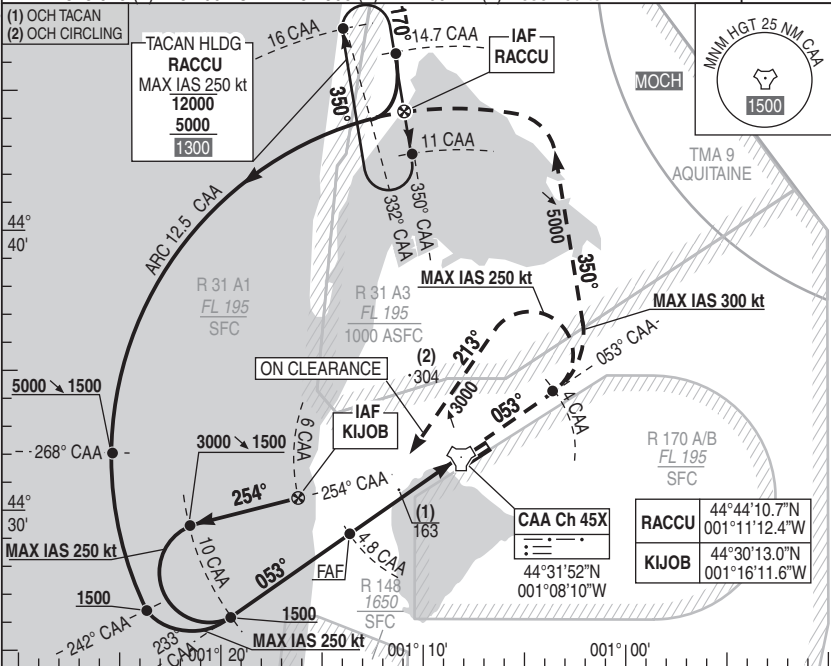
ALT AD : 85 THR : 74

17 JUN 2021

10 CAZAUX LFBC TACAN N RWY06

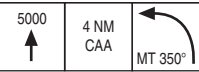
APP : Transit 232.600 (1) 142.450 (1) 119.600 - Radar 251.500 (1) 265.625 (1)
 - Climb 277.300 (1)
 TWR : 375.975 (1) 118.400 GND : 257.800 (1) 122.100 (1) Reserved to MIL

VAR
0°E (20)

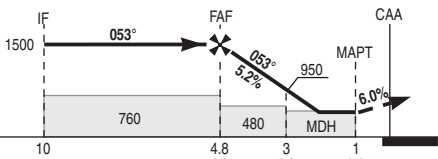


RACCU	44°44'10.7"N 001°11'12.4"W
KIJOB	44°30'13.0"N 001°16'11.6"W

REF HGT : ALT THR in ft



APCH not in RWY axis



RACCU missed APCH : Climb straight ahead up to 5000 ft QFE. At 4 CAA turn left MT 350° to intercept and follow ARC 12.5 CAA to RACCU.

CAT	TACAN			CIRCLING (1)		TACAN NM	4	3	2
	MDH	RVR	OCH	MDH	VIS				
A		1500			1600	4	3	2	
B		1500			1600	1260	950	630	
C	410	1900	409	810	2400				
D/E		1900			3600				

ON CLEARANCE
 KIJOB missed APCH: Climb straight ahead up to 3000 ft QFE. At 4 CAA turn left MT 213° to intercept and follow RDL 254° CAA to KIJOB.

Remarks : (1) Day only.

DIRCAM

NATIONAL FRA INSTRUMENT APPROACH

ALT AD : 85 THR : 74

17 JUN 2021

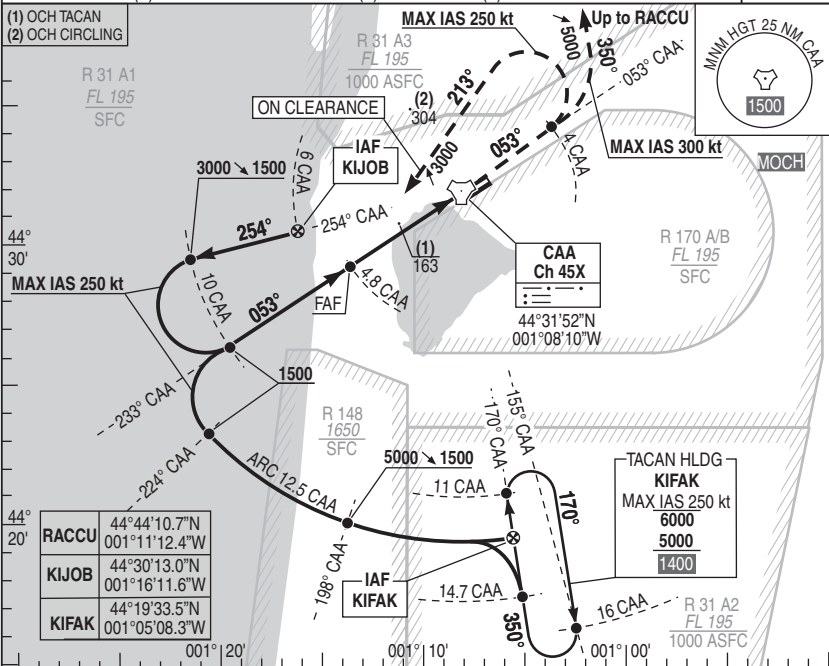
11 CAZAUX LFBC
TACAN S RWY06

APP : Transit 232.600 (1) 142.450 (1) 119.600 - Radar 251.500 (1) 265.625 (1)

- Climb 277.300 (1)

TWR : 375.975 (1) 118.400 GND : 257.800 (1) 122.100 (1) Reserved to MIL

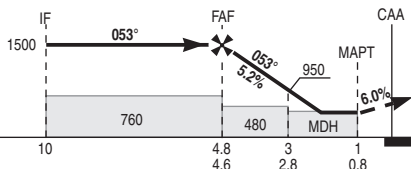
VAR
0°E (20)



RACCU	44°44'10.7"N 001°11'12.4"W
KIJOB	44°30'13.0"N 001°16'11.6"W
KIFAK	44°19'33.5"N 001°05'08.3"W

REF HGT : ALT THR in ft

APCH not in RWY axis



RACCU missed APCH: Climb straight ahead up to 5000 ft QFE. At 4 CAA turn left MT 350° to intercept and follow ARC 12.5 CAA to RACCU.

→ TAC (NM)
→ THR (NM)

CAT	TACAN			CIRCLING (1)			TACAN			ON CLEARANCE KIJOB missed APCH: Climb straight ahead up to 3000 ft QFE. At 4 CAA turn left MT 213° to intercept and follow RDL 254° CAA to KIJOB.
	MDH	RVR	OCH	MDH	RVR	VIS	NM	4	3	
A		1500			1600		HGT	1260	950	630
B		1500			1600					
C	410	1900	409	810	2400	3600				
D/E		1900			3600					

Remarks : (1) Day only.

DIRCAM

TACAN S RWY06

CHG : Modif R 31 A.1.

11 CAZAUX LFBC

NATIONAL FRA INSTRUMENT APPROACH

ALT AD : 85 THR : 83

17 JUN 2021

12 CAZAUX LFBC TACAN / ILS or LOC RWY24

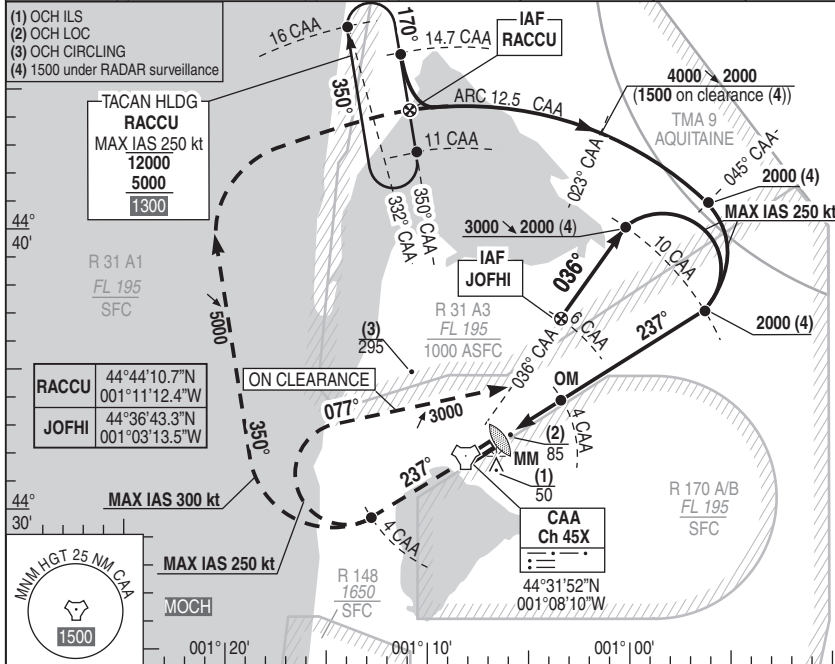
APP : Transit 232.600 (1) 142.450 (1) 119.600 - Radar 251.500 (1)
265.625 (1) - Climb 277.300 (1)

ILS : CAA 110.1

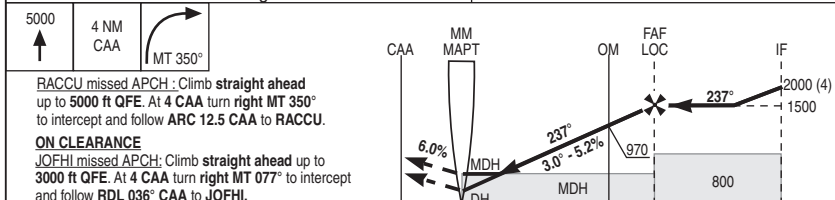
RDH : 52

VAR
0°E (20)

TWR : 375.975 (1) 118.400 GND : 257.800 (1) 122.100 (1) Reserved to MIL



ILS True heading : 236.55° REF HGT : ALT THR in ft



CAT	ILS (1)			LOC			CIRCLING (2)		TACAN			
	DH	RVR	OCH	MDH	RVR	OCH	MDH	VIS				
A	250	800	149	340	800	331	800	1600 1600 2400 3600	NM			
B									5	4	3	
C									HGT	1290	970	650
D/E												

Remarks : (1) Increased minimums, (2) Day only. DIRCAM

NATIONAL FRA INSTRUMENT APPROACH

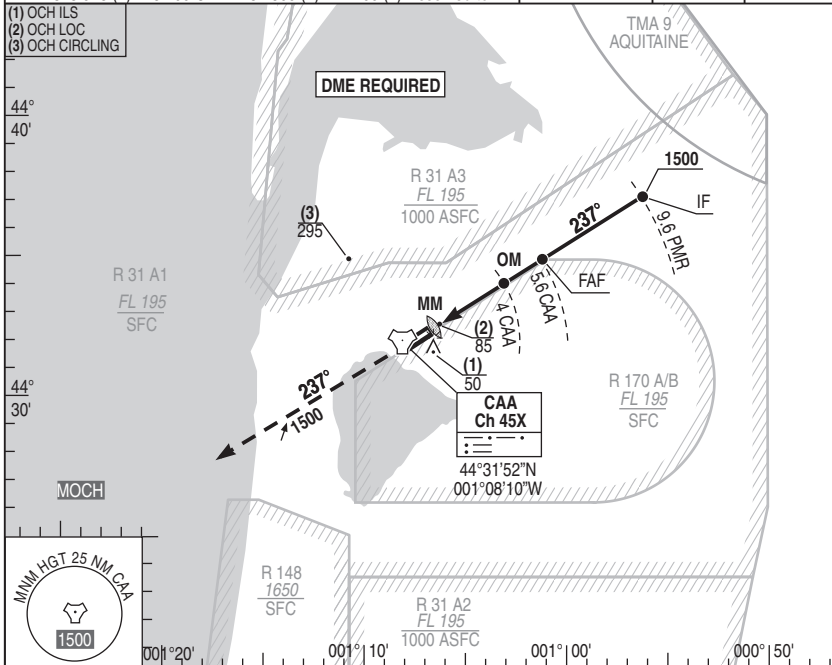
ALT AD : 85 THR : 83

22 APR 2021

13 CAZAUX LFBC
SRA / ILS or LOC RWY24

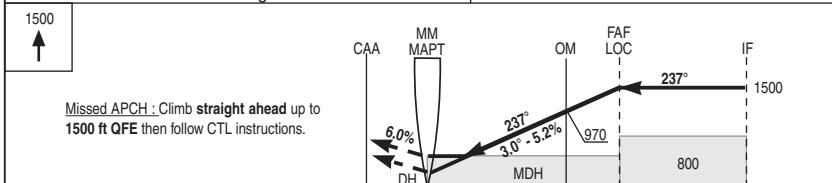
APP : Transit 232.600 (1) 142.450 (1) 119.600 - Radar 251.500 (1)
265.625 (1) - Climb 277.300 (1)
TWR : 375.975 (1) 118.400 GND : 257.800 (1) 122.100 (1) Reserved to MIL

ILS : CAA 110.1
RDH : 52
VAR 0°E (20)



ILS True heading : 236.55°

REF HGT : ALT THR in ft



PMR ← (NM)								
THR ← (NM)								
TAC ← (NM)								
	0.5	1.6	2.9	4.5	5.6	9.6		

CAT	ILS (1)			LOC			CIRCLING (2)		TACAN	NM	2	3	4	5
	DH	RVR	OCH	MDH	RVR	OCH	MDH	VIS						
A								1600						
B	250	800	149	340	800	331	800	1600		330	650	970	1290	
C								2400						
D/E								3600						

Remarks : (1) Increased minimums, (2) Day only. DIRCAM

SRA / ILS or LOC RWY24 CHG : Del R 91, Modif R 31 A1 & R 31 A3. 13 CAZAUX LFBC

NATIONAL FRA INSTRUMENT APPROACH

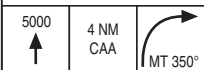
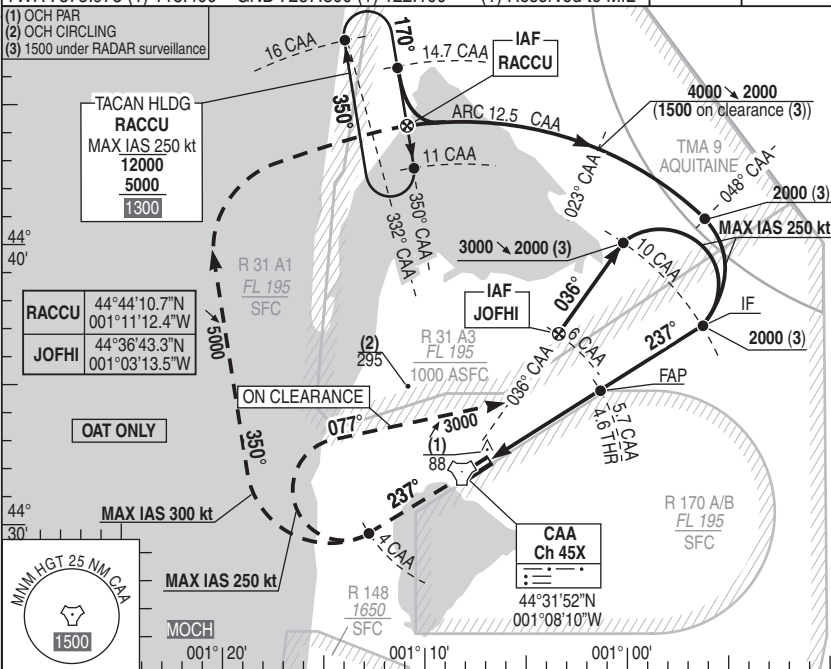
ALT AD : 85 THR : 83

17 JUN 2021

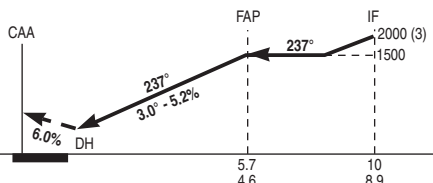
14 CAZAUX LFBC
TACAN / PAR RWY24

APP : Transit 232.600 (1) 142.450 (1) 119.600 - Radar 251.500 (1) 265.625 (1) - Climb 277.300 (1)	RDH : 52	VAR 0°E (20)
TWR : 375.975 (1) 118.400 GND : 257.800 (1) 122.100 (1) Reserved to MIL		

- (1) OCH PAR
- (2) OCH CIRCLING
- (3) 1500 under RADAR surveillance



RACCU missed APCH : Climb straight ahead up to 5000 ft QFE.
At 4 CAA turn right MT 350° to intercept and follow ARC 12.5 CAA to RACCU.



TAC ← (NM)
THR ← (NM)

CAT	PAR (1)			CIRCLING (2)	
	DH	RVR	OCH	MDH	VIS
A	250	800	187	800	1600
B					1600
C					2400
D/E					3600

ON CLEARANCE
JOFHI missed APCH : Climb straight ahead up to 3000 ft QFE.
At 4 CAA turn right MT 077° to intercept and follow RDL 036° CAA to JOFHI.

Remarks : (1) Increased minimums, (2) Day only. DIRCAM

TACAN / PAR RWY24

CHG : Modif R 31 A1.

14 CAZAUX LFBC

NATIONAL FRA INSTRUMENT APPROACH

ALT AD : 85 THR : 83

22 APR 2021

15 CAZAUX LFBC
SRA / PAR RWY24

APP : Transit 232.600 (1) 142.450 (1) 119.600 - Radar 251.500 (1) 265.625 (1)

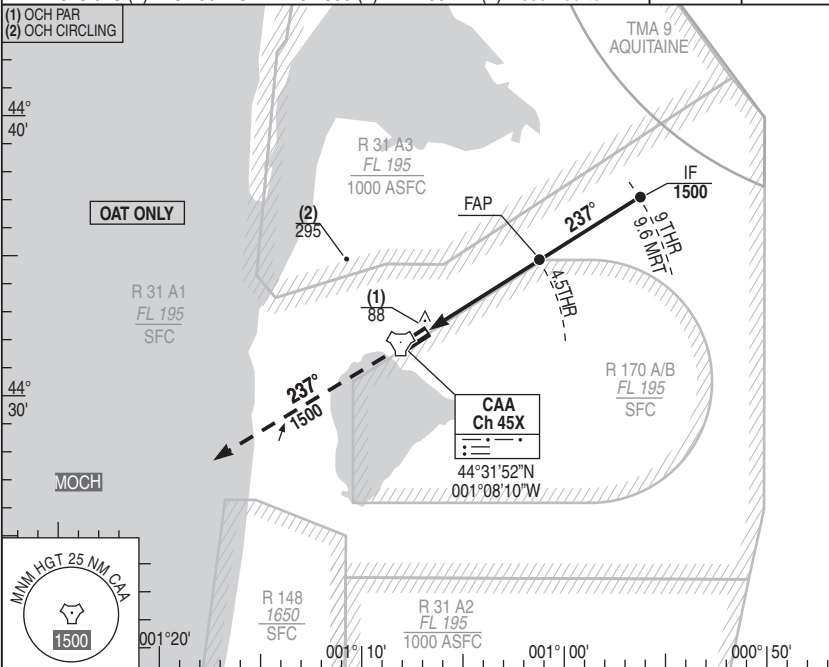
- Climb 277.300 (1)

TWR : 375.975 (1) 118.400 GND : 257.800 (1) 122.100 (1) Reserved to MIL

RDH : 52

VAR
0°E (20)

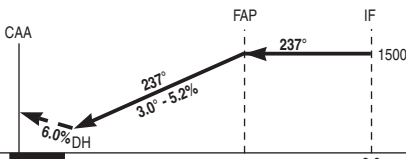
(1) OCH PAR
(2) OCH CIRCLING



REF HGT : ALT THR in ft



Missed APCH: Climb straight ahead up to 1500 ft QFE then follow CTL instructions.



MRT ← (NM)
THR ← (NM)

4.5

9.6
9

CAT	PAR (1)			CIRCLING (2)	
	DH	RVR	OCH	MDH	VIS
A					1600
B	250	800	187	800	1600
C					2400
D/E					3600

Remarks : (1) Increased minimums, (2) Day only.

DIRCAM

SRA / PAR RWY24

CHG : Del R 91, Modif R 31 A1 & R 31 A3.

15 CAZAUX LFBC

NATIONAL FRA INSTRUMENT DEPARTURE

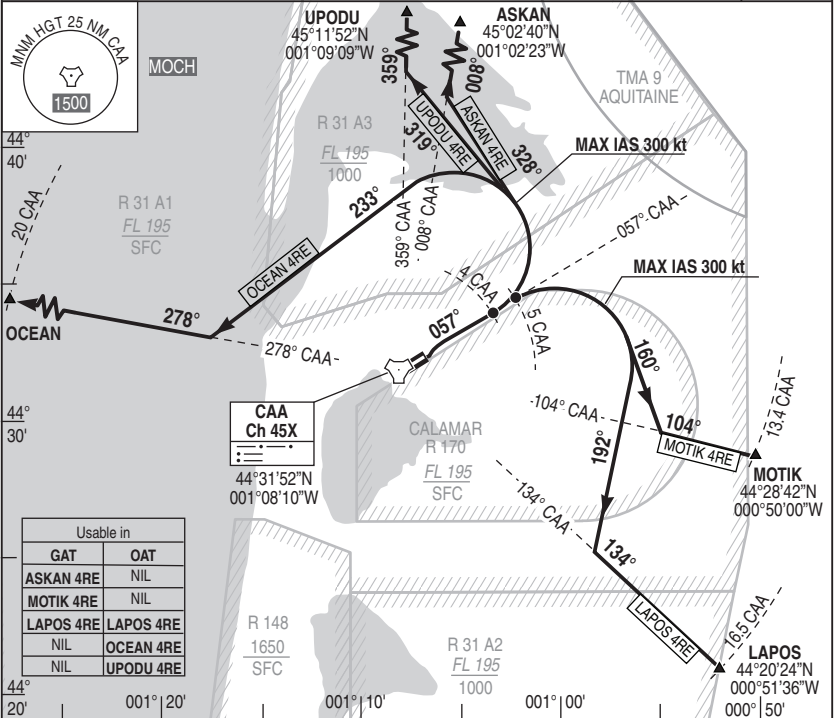
ALT AD : 85 THR : 74

22 APR 2021

SID 01 CAZAUX LFBC DEPARTURES RWY06

APP : Transit 232.600 (1) 142.450 (1) 119.600 - Radar 251.500 (1) 265.625 (1) - Climb 277.300 (1)
TWR : 375.975 (1) 118.400 GND : 257.800 (1) 122.100 (1) Reserved to MIL

VAR
0°E (20)



REF HGT : ALT THR in ft

ASKAN 4RE: Climb RDL 057° CAA (MT 057°) to authorized flight level (1). At 4 CAA, turn left MT 328° to intercept and follow RDL 008° CAA (MT 008°) to ASKAN.

MOTIK 4RE: Climb RDL 057° CAA (MT 057°) to authorized flight level (1). At 5 CAA, turn right MT 160° to intercept and follow RDL 104° CAA (MT 104°) to MOTIK.

LAPOS 4RE: Climb RDL 057° CAA (MT 057°) to authorized flight level (1). At 5 CAA, turn right MT 192° to intercept and follow RDL 134° CAA (MT 134°) to LAPOS.

OCEAN 4RE: Climb RDL 057° CAA (MT 057°) to authorized flight level (1). At 4 CAA, turn left MT 233° to intercept and follow RDL 278° CAA (MT 278°) to OCEAN.

UPODU 4RE: Climb RDL 057° CAA (MT 057°) to authorized flight level (1). At 4 CAA, turn left MT 319° to intercept and follow RDL 359° CAA (MT 359°) to UPODU.

(1) Minimal climb gradient : 8.75%.

DIRCAM

DEPARTURES RWY06

CHG : Del R 91, Modif R 31 A1 & R 31 A3.

SID 01 CAZAUX LFBC

NATIONAL FRA INSTRUMENT DEPARTURE

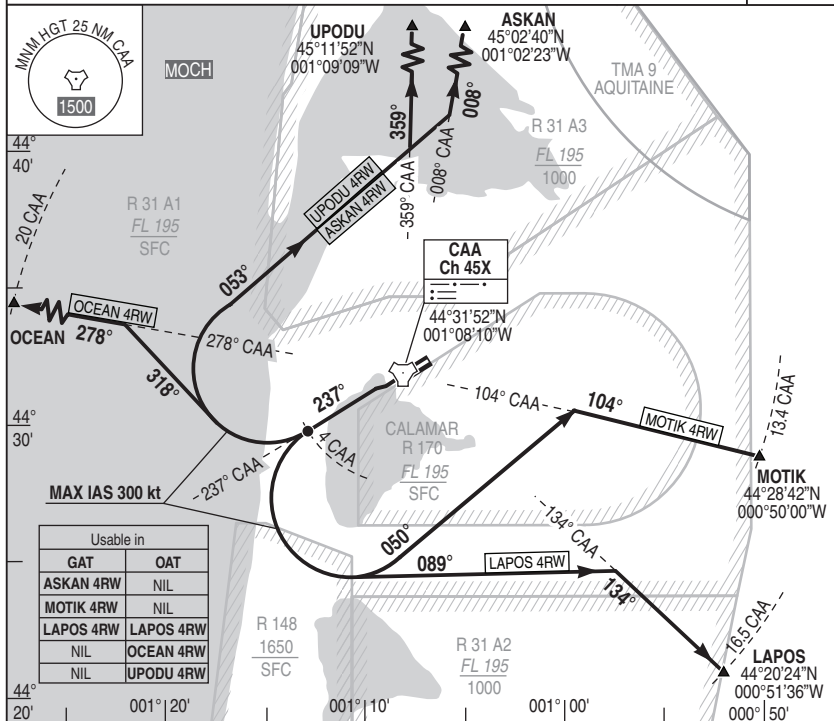
ALT AD : 85 THR : 83

22 APR 2021

SID 02 CAZAUX LFBC DEPARTURES RWY24

APP : Transit 232.600 (1) 142.450 (1) 119.600 - Radar 251.500 (1) 265.625 (1) - Climb 277.300 (1)
TWR : 375.975 (1) 118.400 GND : 257.800 (1) 122.100 (1) Reserved to MIL

VAR
0°E (20)



ASKAN 4RW: Climb RDL 237° CAA (MT 237°) to authorized flight level (1). At 4 CAA, turn right MT 053° to intercept and follow RDL 008° CAA (MT 008°) to ASKAN.

MOTIK 4RW: Climb RDL 237° CAA (MT 237°) to authorized flight level (1). At 4 CAA, turn left MT 050° to intercept and follow RDL 104° CAA (MT 105°) to MOTIK.

LAPOS 4RW: Climb RDL 237° CAA (MT 237°) to authorized flight level (1). At 4 CAA, turn left MT 089° to intercept and follow RDL 134° CAA (MT 134°) to LAPOS.

OCEAN 4RW: Climb RDL 237° CAA (MT 237°) to authorized flight level (1). At 4 CAA, turn right MT 318° to intercept and follow RDL 278° CAA (MT 278°) to OCEAN.

UPODU 4RW: Climb RDL 237° CAA (MT 237°) to authorized flight level (1). At 4 CAA, turn right MT 053° to intercept and follow RDL 359° CAA (MT 359°) to UPODU.

(1) Minimal climb gradient : 8.75%.

DIRCAM

DEPARTURES RWY24

CHG : Del R 91, Modif R 31 A1 & R 31 A3.

SID 02 CAZAUX LFBC