

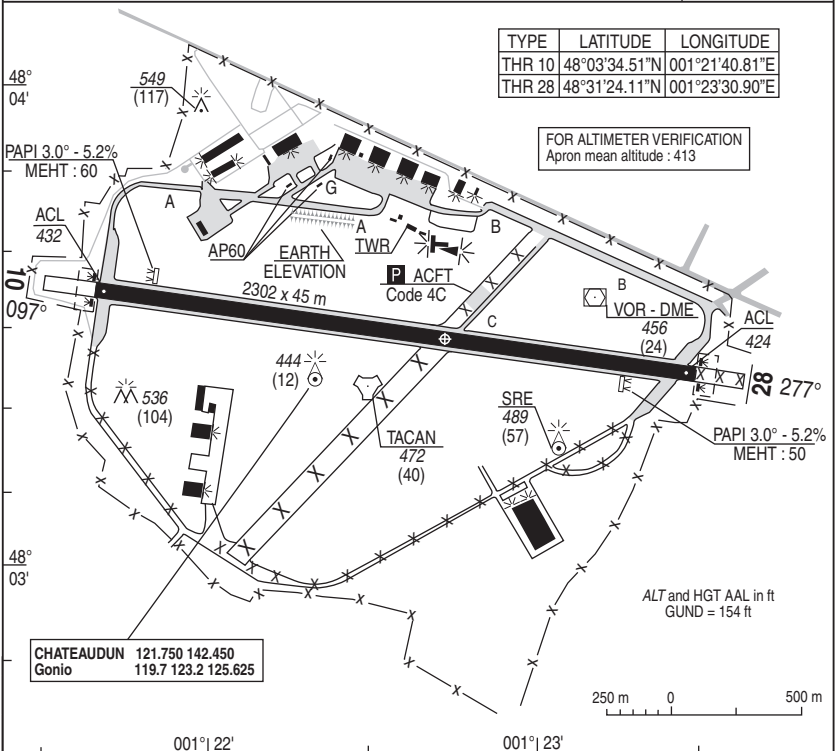
NATIONAL FRA AERODROME CHART

05 NOV 2020

01 CHATEAUDUN LFOC

ALT AD : 432 (16 hPa)

VAR : 1°E (20)



TYPE	LATITUDE	LONGITUDE
THR 10	48°03'34.51"N	001°21'40.81"E
THR 28	48°31'24.11"N	001°23'30.90"E

FOR ALTIMETER VERIFICATION
Apron mean altitude : 413

CHATEAUDUN 121.750 142.450
Gonio 119.7 123.2 125.625

RWY	LIGHTING		DECLARED DISTANCES				Surface Strength	MINIMUMS TKOF (RVR in m)			
	APPROACH	RWY	TORA	TODA	ASDA	LDA		CAT A.	B.	C.	CAT D.
10	NIL	LIH / LIL	2302	2360	2302	2302	Paved	550 by day 800 by night			
28	NIL	LIH / LIL	2302	2361	2507	2302	24 F/C/W/T	550 by day 800 by night			

OMNIDIRECTIONAL DEPARTURES

RWY 10 : Climb MT 097° until 3 CAD, then direct route up to enroute safety altitude.

RWY 28 : Climb MT 262° until 3 CAD, then direct route up to enroute safety altitude.

MARKINGS - LIGHTINGS :

- Day lighting HI/BI RWY 10/28 – Flashing lights RWY 10 & 28
- Remaining distance panels RWY 10 & 28 : 300 m - PAPI RWY 28 and RWY 10 (3° slope) TWY-AST

DIRCAM

DV (Flight director): 02 38 42 66 55 - 811 123 6655

USE RESTRICTIONS

- Outside ATS HOR AD is forbidden to ACFT
- Landing PPR submitted to the flight director (PPR number must figure in the case 18 FPL)
- By night, if PAPI unserviceable, circling RWY 28 are forbidden.

INSTRUCTIONS

- Night landing RWY 10/28 : 2302m – AWY vertical AD
- Central APP for CHATEAUDUN and ORLEANS. Initial contact BRICY APP 122.700 or 374.225
- FPL : Address mandatory LFOJZPX.
- After omnidirectional departure, plan CAD (first point in FPL route text field).
- For FPL with destination LFOC, pilots had to finish FPL route text field with CAD.

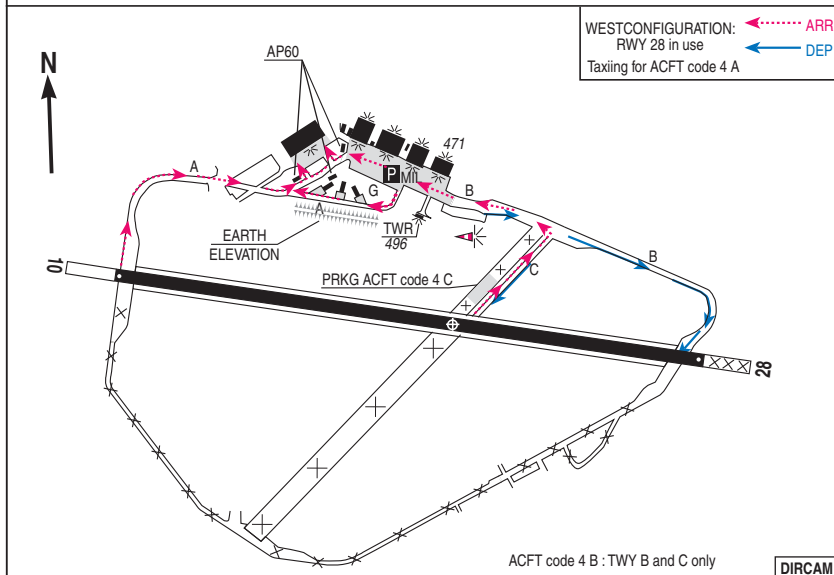
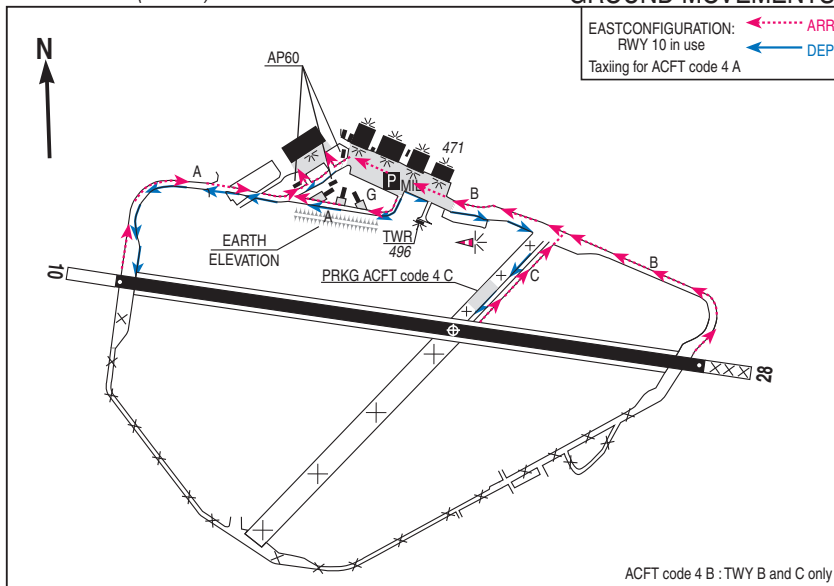
REFUELING

- F18 F34 – Oxygen

ATS HOR

- WINTER MON-THU : 0730-1600, FRI : 0730-1400 - SAT, SUN,HOL : No ATS available
- SUMMER (- 1 Hr)

DIRCAM



VISUAL ARR & DEP

ALT AD : 432 (16 hPa)

10 SEP 2020

02 CHATEAUDUN LFOC

JET RWY 10 & 28

APP : BRICY APP : 122.700 - 374.225

AD FAF restricted use

VAR
1°E
(20)

TWR : CHATEAUDUN TWR : 121.750 - 125.625 -

5 Km ESE from CHATEAUDUN

TEL BRICY APP : 02.38.42.66.01

257.800 (1) - 370.775 (1)

(1) Reserved to MIL



JET RWY 10 & 28

CHG : VAR, obstacle revise file.

02 CHATEAUDUN LFOC

VISUAL ARR & DEP INSTRUCTIONS

Airspace restriction :

Refer to AIP FRANCE or French Defense 1/1.000.000 aeronautical chart.

WARNING:

QFU 28: TKOF and LDG obstacle limitation surfaces crossed by surrounding fences and earth elevation

QFU 28: LDG obstacle limitation surfaces crossed by earth elevation

QFU 10: LDG obstacle limitation surface crossed by 2 non frangible traffic lights

QFU 10: TKOF and LDG obstacle limitation surfaces crossed by surrounding fences

ARRIVAL:

Radio Contact is mandatory with BRICY APP, 3 MIN before entering EAC/S.

Report ER point at 2000 ft QFE :

ER NORD: Bridge N10 et TGV rail 1NM North of BONNEVAL 006°/9 NM TAC.**ER SUD :** Road interchange 1 NM W of FRETEVAL 211°/12 NM TAC.Then join IP for RWY in use. **IP 10 :** ST DENIS LES PONTS 277°/3.5 NM TAC.**IP 28 :** ST CLOUD EN DUNOIS 097°/3.5 NM TAC.

Descent to 1500 ft QFE after IP

RWY 10 : break right hand.**RWY 28 :** break left hand.**NOTA :** If Ceiling < 2000 ft, ACFT are under APP control for regulation and vectoring towards IP or GCA**DEPARTURE:**After TKOF Climb limit is 1000 ft **MAX** till end of RWY.**RWY 10 :** Climb straight ahead to 1500 ft QFE. Own navigation on TWR clearance.**RWY 28 :** End of RWY, climb to 1500 ft on heading 257°. At 5 NM TAC own navigation for exiting area.**NOTA :** Report exiting EAC/S to end clearance.

NATIONAL FRA
ALT AD : 432 (16 hPa)

10 SEP 2020

04 CHATEAUDUN LFOC
HMG (ORLEANS BRICY)

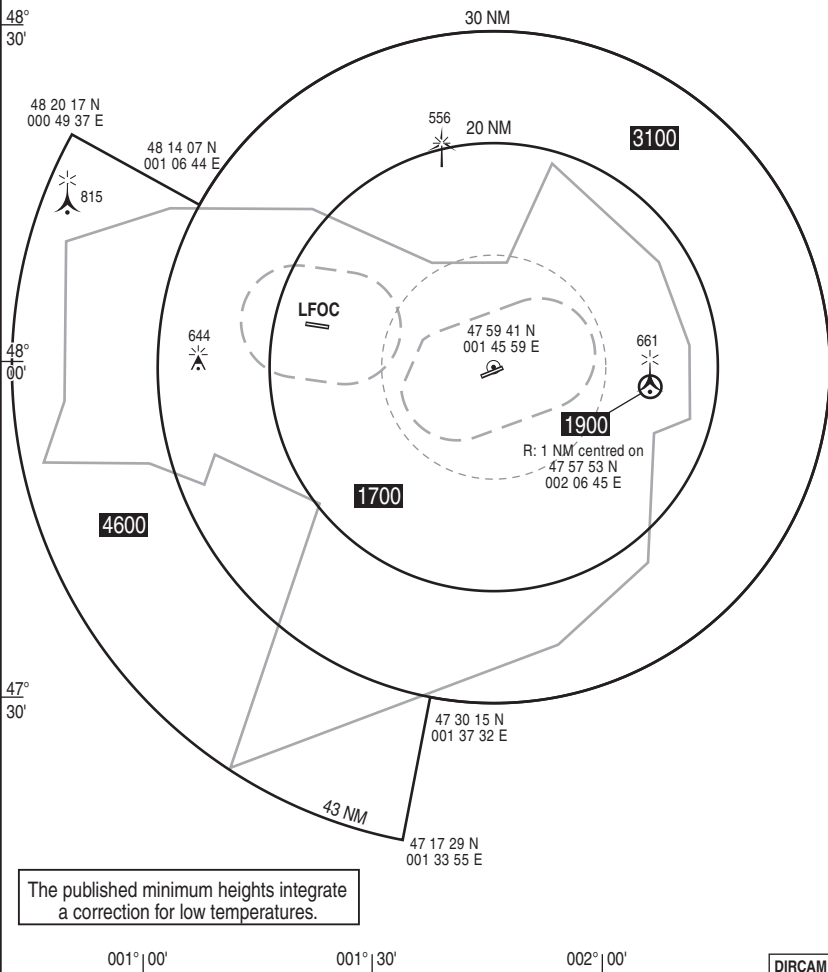
BRICY APP : 122.700 - 374.225

CHATEAUDUN TWR : 121.750 - 125.625 - 257.800 (1) - 370.775 (1) (1) Reserved to MIL

VAR
1°E
(20)

COMMUNICATION FAILURE : Apply french national regulation.

HMG corresponding to normal working of APP surveillance means.



HMG

CHG : VAR, obstacle revise file.

04 CHATEAUDUN LFOC

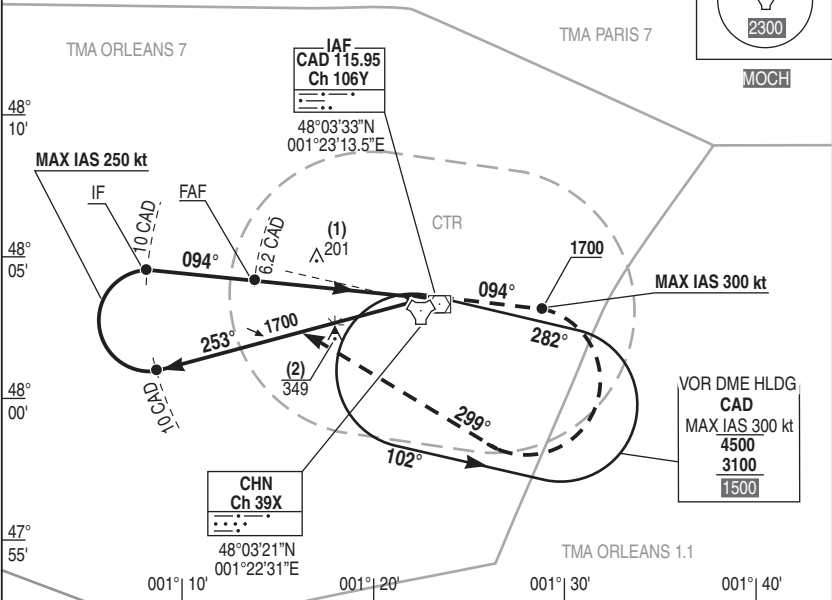
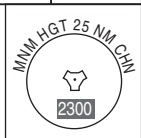
NATIONAL FRA INSTRUMENT APPROACH

ALT AD : 432 **THR : 432 (16 hPa)** 10 SEP 2020

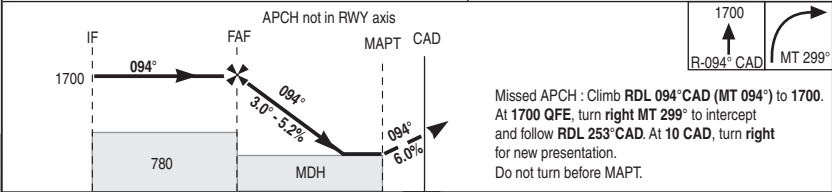
05 CHATEAUDUN LFOC VOR / DME RWY 10

BRICY APP : 122.700 - 374.225
CHATEAUDUN TWR : 121.750 - 125.625 - 257.800 (1) - 370.775 (1) (1) Reserved to MIL VAR 1°E (20)

- (1) OCH VOR DME
- (2) OCH CIRCLING



REF HGT : ALT THR in ft



→ DME (NM)
→ THR (NM)

CAT	VOR DME			CIRCLING			VOR / DME				
	MDH	RVR	OCH	MDH	RVR	OCH	NM	6	5	4	3
A		1500			1600						
B		1500			1600						
C	450	2100	447	650	2400	644	1630	1320	1000	680	
D		2100			3600						

Remarks : VSS checked. DIRCAM

NATIONAL FRA INSTRUMENT APPROACH

ALT AD : 432 **THR : 424 (16 hPa)**

10 SEP 2020

06 CHATEAUDUN LFOC VOR / DME RWY 28

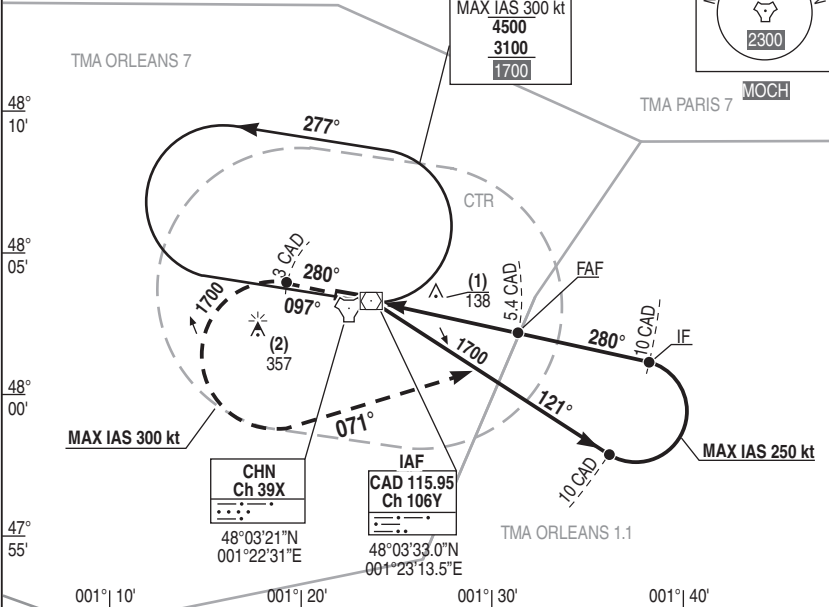
BRICY APP : 122.700 - 374.225

CHATEAUDUN TWR : 121.750 - 125.625 - 257.800 (1) - 370.775 (1) (1) Reserved to MIL

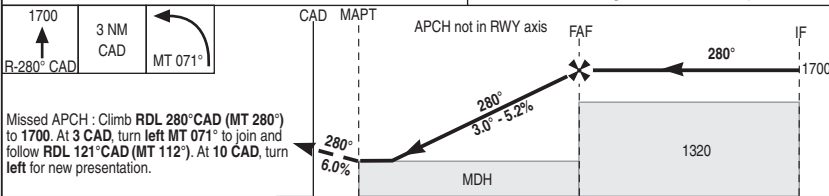
VAR
1°E (20)

(1) OCH VOR DME
(2) OCH CIRCLING

VOR DME HLDG
CAD
MAX IAS 300 kt
4500
3100
1700



REF HGT : ALT THR in ft



Missed APCH : Climb RDL 280°CAD (MT 280°) to 1700. At 3 CAD, turn left MT 071° to join and follow RDL 121°CAD (MT 112°). At 10 CAD, turn left for new presentation.

CAD DME ← (NM)
THR ← (NM)

CAT	VOR DME			CIRCLING			CAD VOR / DME							
	MDH	RVR	OCH	MDH	RVR	OCH	NM	HGT						
A		1500			1600		5	1570	4	1260	3	940	2	620
B		1500			1600									
C	390	1800	384	660	2400	652								
D/E		1800			3600									

Remarks :

DIRCAM

VOR / DME RWY 28

CHG : VAR, obstacle revise file.

06 CHATEAUDUN LFOC

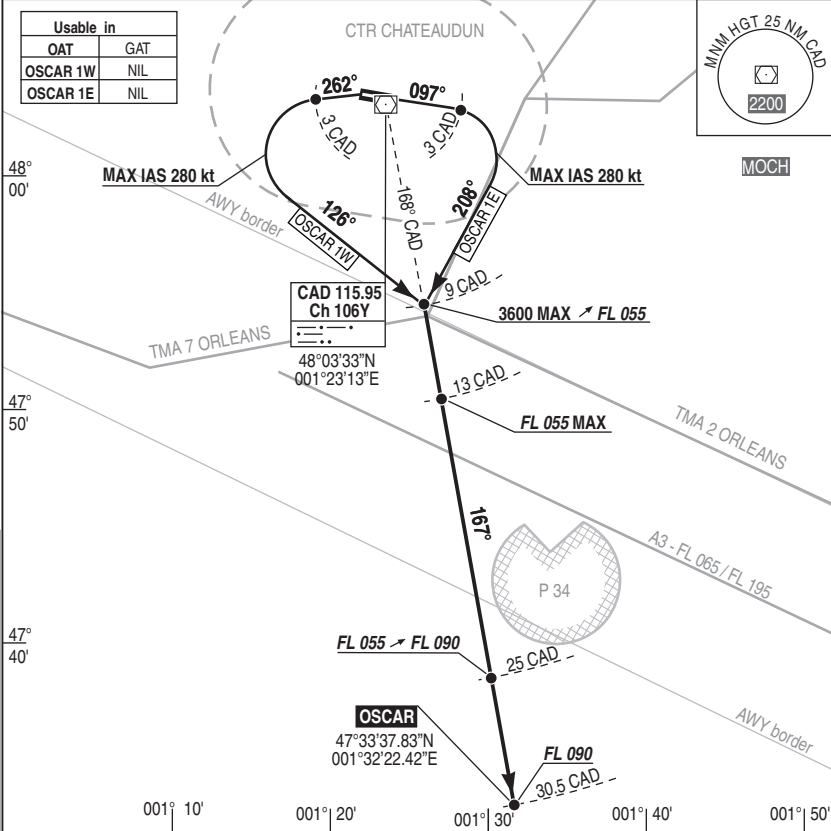
NATIONAL FRA
 INSTRUMENT DEPARTURE 05 NOV 2020
 ALT AD : 432 **THR 10** : 432 **THR 28** : 424

SID 01 **CHATEAUDUN LFOC**
 DEPARTURE RWY 10 & 28

BRICY APP : 122.700 - 374.225

CHATEAUDUN TWR : 121.750 - 125.625 - 257.800 (1) - 370.775 (1) (1) Reserved to MIL

VAR
 1°E (20)



REF HGT : ALT THR in ft

DEPART OSCAR 1E RWY 10 : Climb MT 097° to 3600 MAX. At 3 CAD turn right MT 208° to intercept and follow RDL 167° CAD (MT 167°).
 At 9 CAD, climb to FL 055 MAX and maintain FL 055 until 25 CAD. At 25 CAD, climb to FL 090. Do not turn before DER.

DEPART OSCAR 1W RWY 28 : Climb MT 262° to 3600 MAX. At 3 CAD turn left MT 126° to intercept and follow RDL 167° CAD (MT 167°).
 At 9 CAD, climb to FL 055 MAX and maintain FL 055 until 25 CAD. At 25 CAD, climb to FL 090. Do not turn before DER.

COMMUNICATION FAILURE : 7600 and apply French national regulation.

DIRCAM

DEPARTURE RWY 10 & 28

CHG : Pagination.

SID 01 CHATEAUDUN LFOC

