

# NATIONAL FRA AERODROME CHART

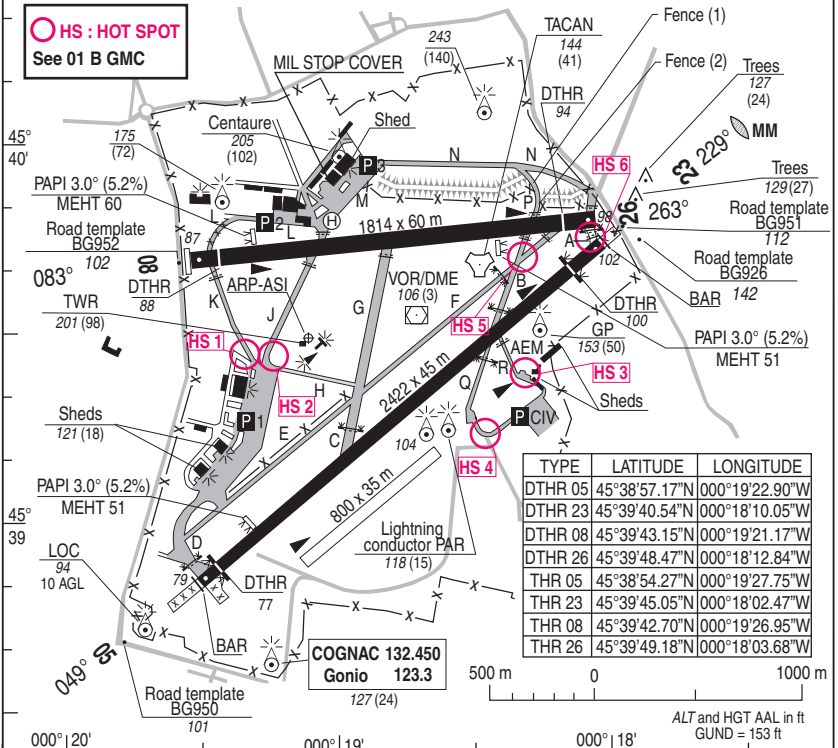
17 JUN 2021

# 01 COGNAC CHATEAUBERNARD LFBG

ALT AD : 103 (4 hPa)

VAR : 0°E (20)

**HS : HOT SPOT**  
See 01 B GMC



RWY	LIGHTING		DECLARED DISTANCES				Surface	Strength	MINIMUMS TKOF (RVR in m)			
	APPROACH	RWY	TORA	TODA	ASDA	LDA			CAT A	B	C	D
05	NIL	LIH	2422	2422	2422	2284	Paved		400			400
23	NIL	LIH	2422	2422	2422	2207	38 F/C/W/T		400			400

### OMNIDIRECTIONAL DEPARTURES

**RWY05** (Alt THR : 79) : Climb **MT 050°** to **1000ft QFE**, then direct route up to enroute safety altitude.

**RWY23** (Alt THR : 102) : Climb **MT 230°** to **1000ft QFE**, then direct route up to enroute safety altitude.

(1) (2) : see 01 A OTHER INFORMATIONS

DIRCAM

**DV (Flight director) :**

**TEL CIV : 05 45 32 74 29**

**TEL MIL : 865 709 7479**

**USE RESTRICTIONS :**

- MAX speed 10kt on TWY D, K and N (East part after TWY P).

(1) Fence : Distance between fence and TWY centre line 30.10m

(2) Fence : Distance between fence and TWY centre line 28.90m

- Non radio equipped ACFT are forbidden.

- TWY R usable only by day (not marked at night)

- Landing PPR submitted to GAA chief via DV (PPR NR reported in FPL box 18)

**REFUELING :**

- F 18 / F 34 / F 35

**HOR ATS :**

- MON-THU : 0715/1600, FRI : 0715-1400 (SUM -1H).

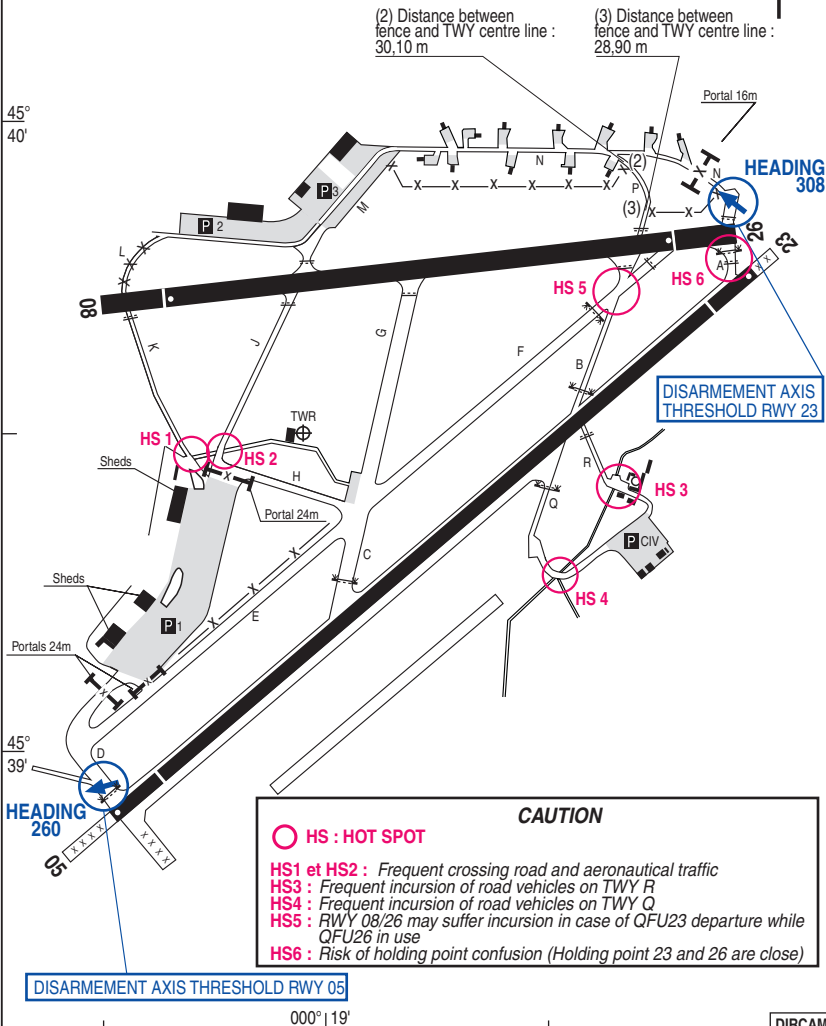
- SAT-SUN-HOL : Closed.

- SUM : -1 Hr

DIRCAM

SECURITY MEASURES FOR ARMED ACFT :

ENGINE MUST BE STOPPED IN DEFINED SPACES FOR DISARMEMENT BY THE PILOT. THEN, TOWING TO APRON WITH PILOT ON BOARD.



**○ HS : HOT SPOT**

- HS1 et HS2 :** Frequent crossing road and aeronautical traffic  
**HS3 :** Frequent incursion of road vehicles on TWY R  
**HS4 :** Frequent incursion of road vehicles on TWY Q  
**HS5 :** RWY 08/26 may suffer incursion in case of QFU23 departure while QFU26 in use  
**HS6 :** Risk of holding point confusion (Holding point 23 and 26 are close)

**CAUTION**

# VISUAL ARR & DEP

# 02 COGNAC CHATEAUBERNARD LFBG

ALT AD : 103 (4 hPa)

21 APR 2022

JET RWY05 & 08

APP : 142.450 - 387.300 (Recovery) - 281.625 (Climb)

AD FAF restricted use

VAR

TWR : 120.075 - 122.100 - 253.200

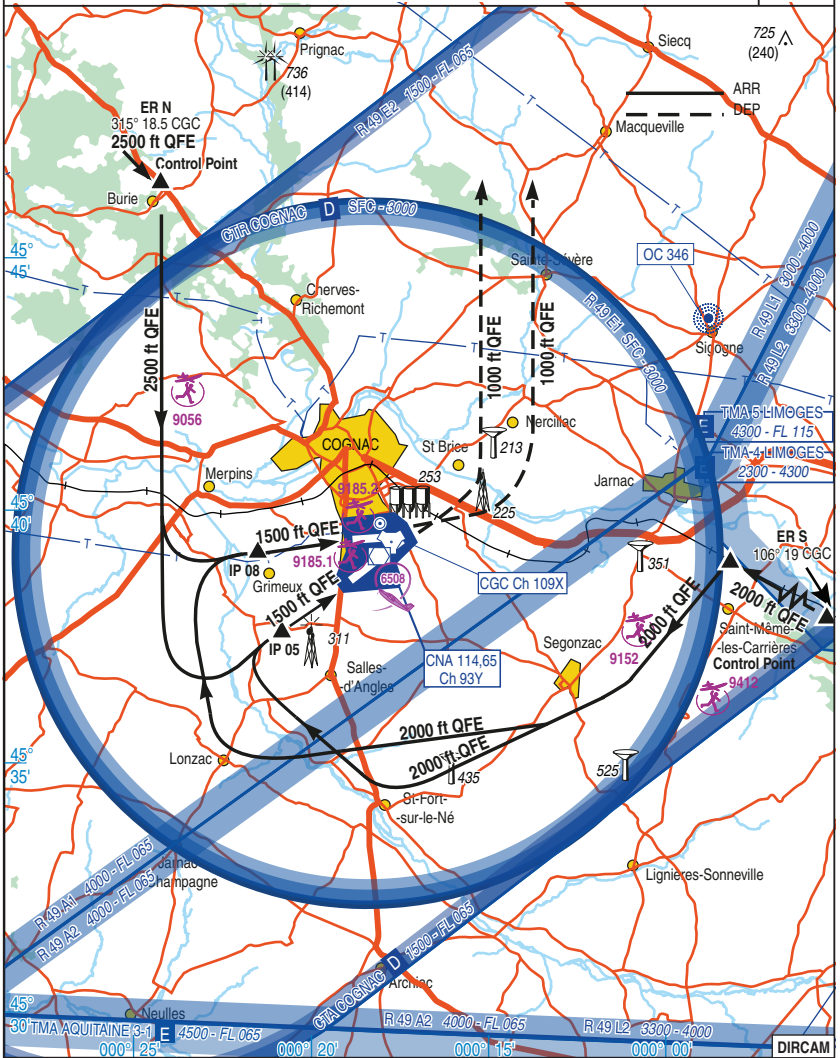
3 Km S from COGNAC

0°E

ATIS : 386.625

TEL : 05.79.20.03.00

(20)



JET RWY05 & 08

CHG : CTR, R49E1.

02 COGNAC CHATEAUBERNARD LFBG

DIRCAM

**VISUAL ARR & DEP JET INSTRUCTIONS RWY 05 AND 08**

Airspace restriction :

Refer to AIP FRANCE or French Defense 1/1.000.000 aeronautical chart.

**WARNING**

TKOF climb surfaces crossed :

- *Departure RWY 05, THR23* : obst. BG951, road template alt. + MOC = 119 ft
- *Departure RWY 08, THR26* : obst. fences

Flying over COGNAC city is forbidden. The high flight training school activity in these areas needs a very careful sky awareness.

Informations announced by ATIS must be known before first contact with COGNAC APP or COGNAC GND. Informations available only during ATS hours.

**Special VFR by day** : can be approved by COGNAC APP or TWR, inside control area,

**if** : speed  $\leq 140$  kt + flight visibility  $\geq 3000$  m + flight ceiling  $\geq 700$  ft

**and** weather AD conditions ground visibility  $\geq 3000$  m + AD ceiling  $\geq 700$  ft.

**Special OAT type Victor (only by day)** : can be approved by COGNAC APP or TWR, inside control area,

**if** : flight visibility  $\geq 3700$  m or  $30''$  of flight + nebulosity between 3/8 and 8/8 over AD  $\geq 700$  ft.

**ARRIVAL**

Contact COGNAC APP 3 MIN before entry point.

Fly at 2500 ft QFE (or under ceiling) at 350 kt on the following point:

**ER N** : 5 NM SW ST JEAN D'ANGELY (bridge on motorway)  $315^\circ / 18,5$  NM TAC.

Fly at 2000 ft QFE (or under ceiling) at 350 kt on the following point:

**ER S** : abeam South MOUTIERS/BOEME  $106^\circ / 19$  NM TAC.

Depending on traffic activity and ceiling the pilot may :

**(A) - Be cleared to continue on visual flight**

While reporting on control point BURIE (2500 ft QFE) then to IP (2500 ft QFE) of RWY in use for an arrival from ST JEAN D'ANGELY;

Reporting on control point SAINT MEME LES CARRIERES (2000 ft QFE) then to IP (2000 ft QFE) of RWY in use for an arrival from MOUTIERS.

\* **IP 05** :  $226^\circ / 2,4$  NM TACAN CGC ,  $1,4$  NM from RWY .

\* **IP 08** :  $266^\circ / 2,3$  NM TACAN CGC ,  $1,7$  NM from RWY

Contact TWR on APP orders.

Descent to 1500 ft QFE from IP for break (break to the south).

**(B) - Be controlled for:**

Possible holding

APP Regulation.

GCA

**DEPARTURE**

After TKOF climb to MAX 600 ft QFE till RWY end, then climb to 1000 ft QFE. Turn North heading whatever RWY in use.

# VISUAL ARR & DEP

ALT AD : 103 (4 hPa)

# 04 COGNAC CHATEAUBERNARD LFBG

21 APR 2022

JET RWY23 & 26

APP : 142.450 - 387.300 (Recovery) - 281.625 (Climb)

TWR : 120.075 - 122.100 - 253.200

ATIS : 386.625

AD FAF restricted use

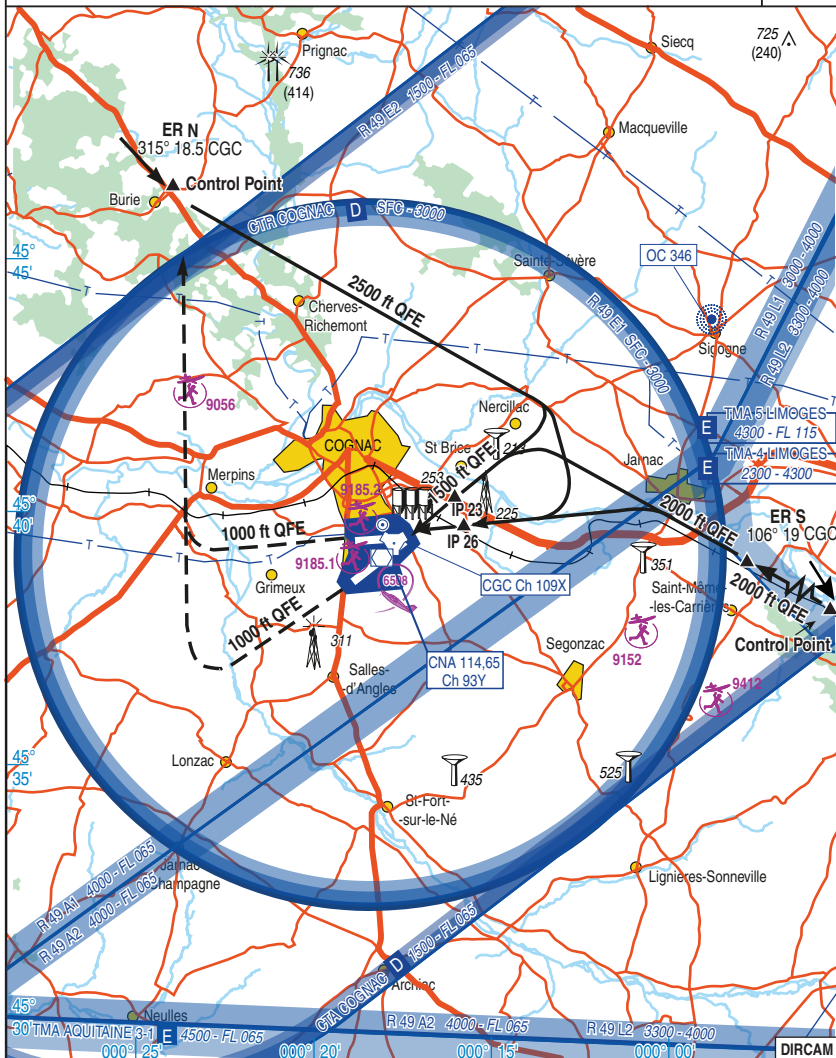
3 Km S from COGNAC

TEL : 05.79.20.03.58

VAR

0°E

(20)



JET RWY23 & 26

CHG : CTR, R49E1.

04 COGNAC CHATEAUBERNARD LFBG

**VISUAL ARR & DEP JET INSTRUCTIONS RWY 23 AND 26**

Airspace restriction :

Refer to AIP FRANCE or French Defense 1/1.000.000 aeronautical chart.

**WARNING**

TKOF climb surfaces crossed:

- *Departure RWY 23, THR05* : -obst. BG950, road template alt. = 101 ft -obst. fences
- *Departure RWY 26, THR08* : -obst. BG952, road template alt. = 102 ft -obst. fences

Flying over COGNAC city is forbidden. The high flight training school activity in these areas needs a very careful sky awareness.

Informations announced by ATIS must be known before first contact with COGNAC APP or COGNAC GND. Informations available only during ATS hours.

**Special VFR by day** : can be approved by COGNAC APP or TWR, inside control area,

if : speed  $\leq 140$  kts + flight visibility  $\geq 3000$  m + flight ceiling  $\geq 700$  ft

and weather AD conditions ground visibility  $\geq 3000$  m + AD ceiling  $\geq 700$  ft.

**Special OAT type Victor (only by day)** : can be approved by COGNAC APP or TWR, inside control area,

if : flight visibility  $\geq 3700$  m or  $30^\circ$  of flight + nebulosity between 3/8 and 8/8 over AD  $\geq 700$  ft.

**ARRIVAL**

Contact COGNAC APP 3 MIN before entry point.

Fly at 2500 ft QFE (or under ceiling) at 350 kt on the following point:

**ER N** : 5 NM SW ST JEAN D'ANGELY (bridge on motorway)  $315^\circ$  / 18,5 NM TAC.

Fly at 2000 ft QFE (or under ceiling) at 350 kt on the following point:

**ER S** : abeam South MOUTIERS/BOEME  $106^\circ$  / 19 NM TAC.

Depending on traffic activity and ceiling the pilot may :

**(A) - Be cleared to continue flight on visual**

While reporting on control point BURIE (2500 ft QFE) then to IP (2500 ft QFE) of RWY in use for an arrival from St JEAN D'ANGELY;

While reporting on control point SAINT MEME LES CARRIERES (2000 ft QFE) then to IP (2000 ft QFE) of RWY in use for an arrival from MOUTIERS.

\* **IP 23** :  $053^\circ$  / 1,6 NM TACAN CGC , 1,2 NM from RWY .

\* **IP 26** :  $081^\circ$  / 1,6 NM TACAN CGC , 1,2 NM from RWY.

Contact TWR on APP orders.

Descent to 1500 ft QFE from IP for break (break to the south).

**(B) - Be controlled for:**

Possible holding

APP Regulation.

GCA

**DEPARTURE**

After TKOF climb to MAX 600 ft QFE till RWY end, then climb to 1000 ft QFE. Turn North heading whatever RWY in use.

NATIONAL FRA

06 COGNAC CHATEAUBERNARD LFBG

ALT AD : 103 (4 hPa)

17 JUN 2021

HMG

APP : 142.450 - 387.300 (Recovery) - 281.625 (Climb)

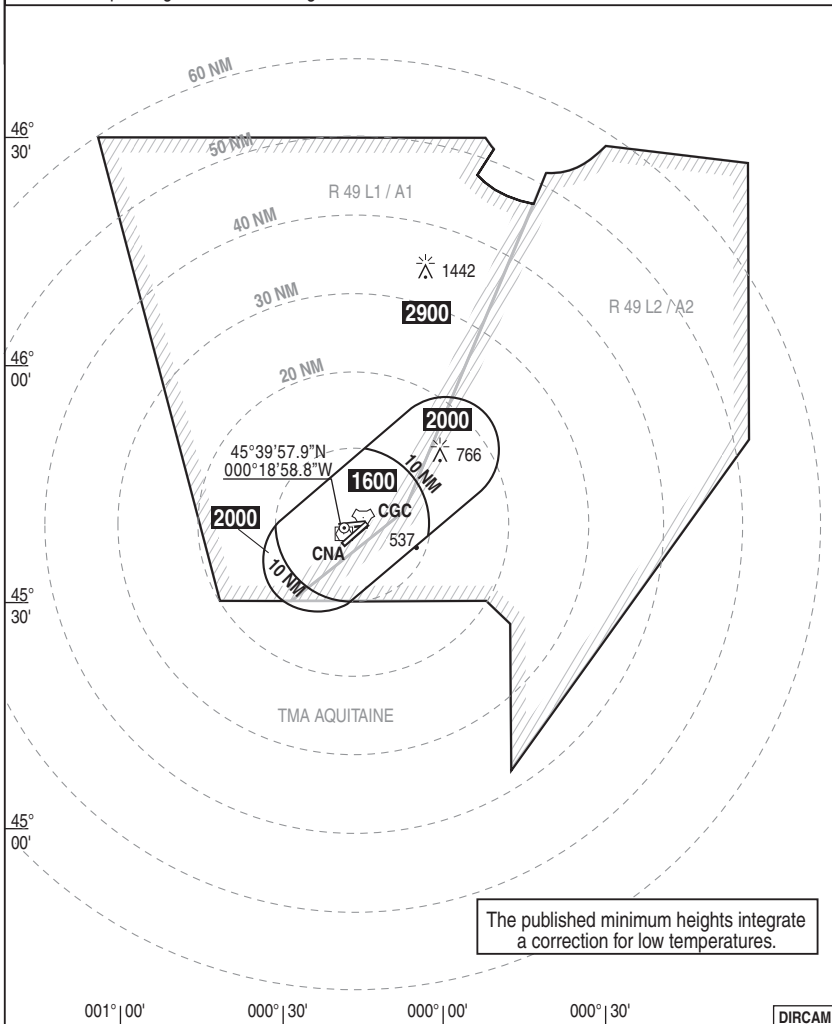
TWR : 120.075 - 122.100 - 253.200

ATIS : 386.625

VAR  
0° E  
(20)

COMMUNICATION FAILURE : Apply french national regulation.

HMG corresponding to normal working of APP surveillance means.



HMG

CHG : R 49 L1 / A1, R 49 L2 / A2.

06 COGNAC CHATEAUBERNARD LFBG



# NATIONAL FRA INSTRUMENT APPROACH

## 07 COGNAC CHATEAUBERNARD LFBG

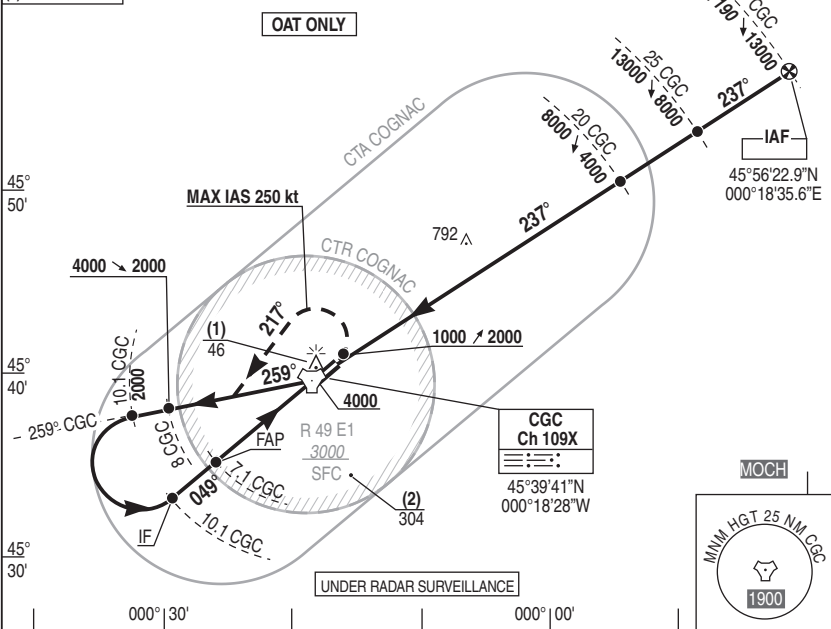
ALT AD : 103 DTHR : 77

21 APR 2022

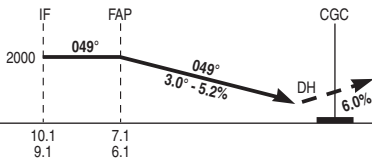
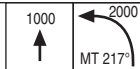
HPMA TACAN / PAR RWY05

APP : 142.450 - 387.300	RDH : 50	VAR 0° E (20)
TWR : 120.075 - 253.200	ATIS : 386.625	

- (1) OCH PAR
- (2) OCH CIRCLING



REF HGT : ALT DTHR in ft



Missed APCH: Climb RWY axis to 2000 ft QFE.  
At 1000 ft QFE, turn left MT 217° to join  
RDL 259° CGC (MT 259°) for new presentation.

→ TAC (NM)  
→ DTHR (NM)

CAT	PAR			CIRCLING (1)		
	DH	RVR	OCH	MDH	VIS	OCH
A	200	1200	143	600	1600	599
B					1600	
C					2400	
D/E					3600	

Remarks : (1) Forbidden North 08/26.

DIRCAM

# NATIONAL FRA INSTRUMENT APPROACH

ALT AD : 103 DTHR : 100

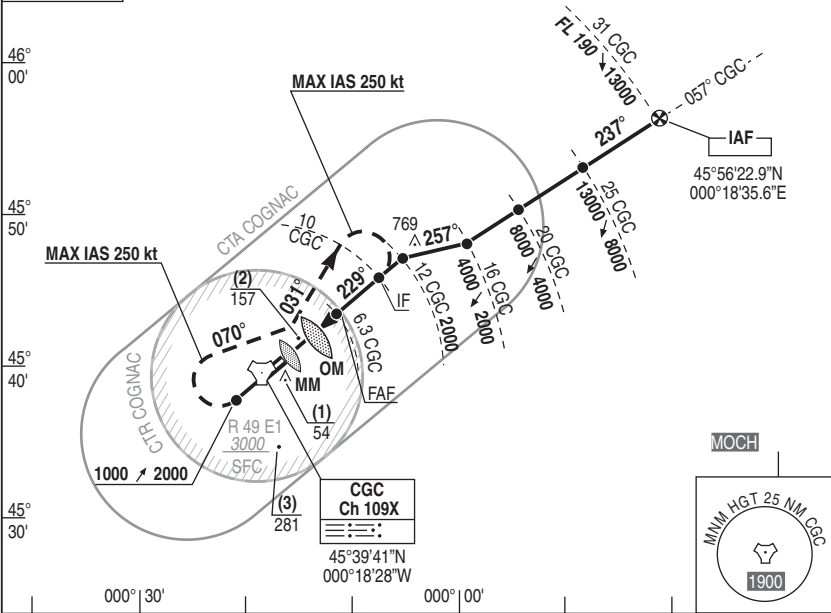
# 08 COGNAC CHATEAUBERNARD LFBG

21 APR 2022

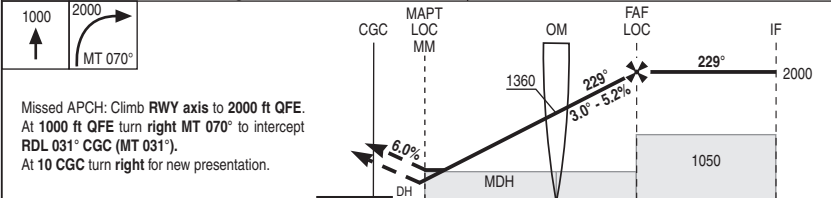
HPMA TACAN / ILS RWY23

APP : 142.450 - 387.300	ILS : CGC 109.9 ⋮⋮⋮	RDH : 51	VAR 0° E (20)
TWR : 120.075 - 253.200	ATIS : 386.625		

- (1) OCH ILS
- (2) OCH LOC
- (3) OCH CIRCLING



ILS True heading : 229.68° REF HGT : ALT DTHR in ft



TAC	← (NM)	0.8	4.3	6.3	10
DTHR	← (NM)	0.6	4.1	6.1	9.8

CAT	ILS			LOC			CIRCLING (1)			LOC - TACAN				
	DH	RVR	OCH	MDH	RVR	OCH	MDH	VIS	OCH	NM	5	4	3	2
A					1500			1600			1580	1260	950	640
B	200	1200	153	410	1500	403	580	1600						
C					1900			2400	576					
D					1900			3600						

Remarks : (1) Forbidden North 08/26. VSS checked. DIRCAM

NATIONAL FRA  
INSTRUMENT APPROACH

09 **COGNAC** CHATEAUBERNARD LFBG  
HPMA TACAN / PAR RWY23

ALT AD : 103 DTHR : 100

21 APR 2022

APP : 142.450 - 387.300

RDH : 49

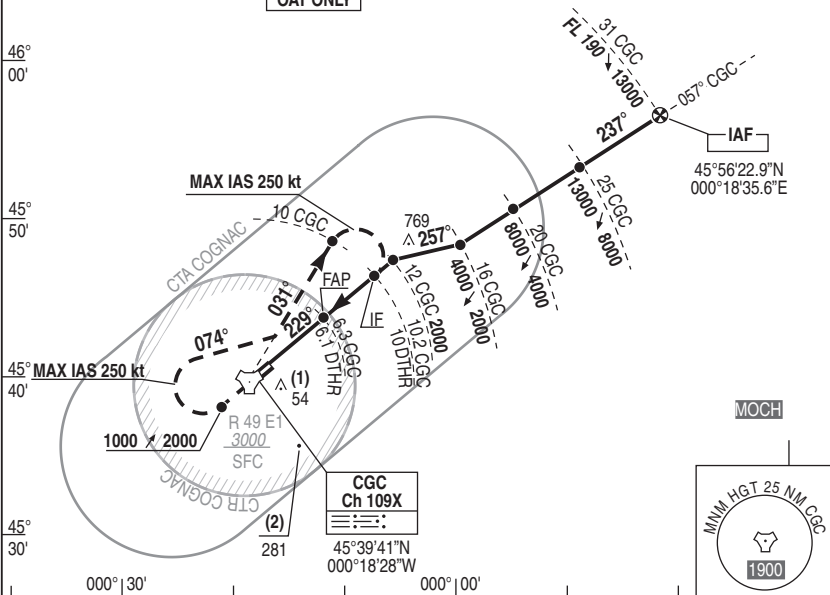
VAR  
0°E (20)

TWR : 120.075 - 253.200

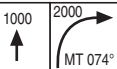
ATIS : 386.625

- (1) OCH PAR
- (2) OCH CIRCLING

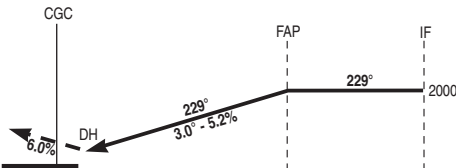
OAT ONLY



REF HGT : ALT DTHR in ft



Missed APCH: Climb RWY axis to 2000 ft QFE.  
At 1000 ft QFE turn right MT 074° to intercept RDL 031° CGC (MT 031°). At 10 CGC turn right for new presentation.



TAC ← (NM)  
DTHR ← (NM)

6.3 10.2  
6.1 10

CAT	PAR			CIRCLING (1)		
	DH	RVR	OCH	MDH	VIS	OCH
A	200	1200	154	580	1600	576
B					1600	
C					2400	
D					3600	

Remarks : (1) Forbidden North 08/26.

DIRCAM

# NATIONAL FRA INSTRUMENT APPROACH

ALT AD : 103 DTHR : 100

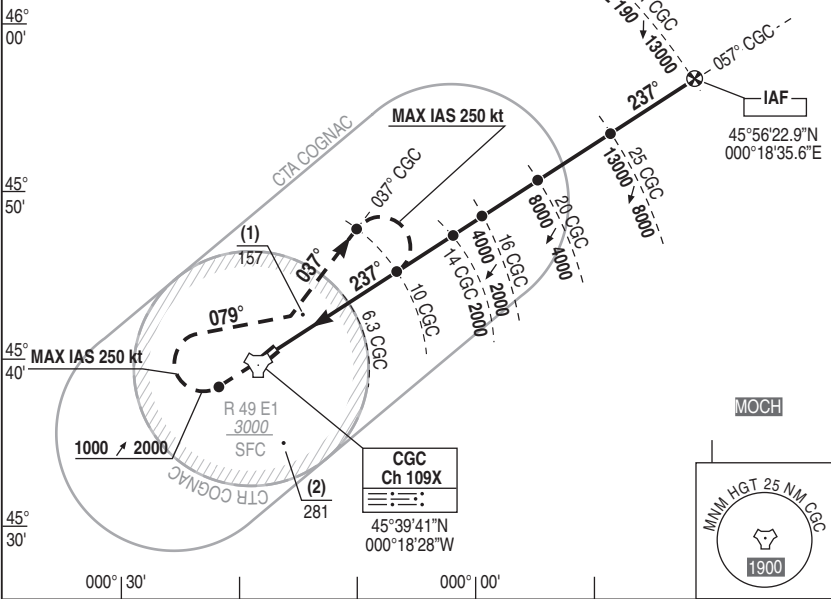
# 10 COGNAC CHATEAUBERNARD LFBG

21 APR 2022

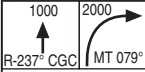
HPMA TACAN RWY 23

APP : 142.450 - 387.300  
TWR : 120.075 - 253.200  
ATIS : 386.625  
VAR 0°E (20)

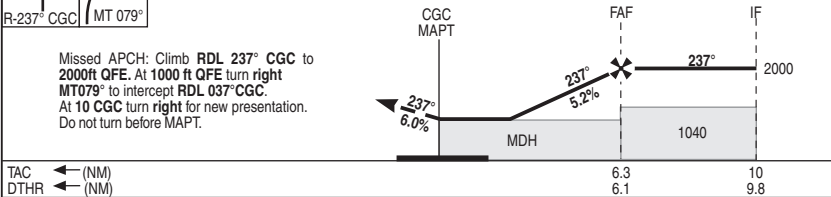
(1) OCH TACAN  
(2) OCH CIRCLING



REF HGT : ALT DTNR in ft



Missed APCH: Climb RDL 237° CGC to 2000ft QFE. At 1000 ft QFE turn right MT079° to intercept RDL 037° CGC. At 10 CGC turn right for new presentation. Do not turn before MAPT.



CAT	TACAN (1)			CIRCLING (2)			TACAN					
	MDH	RVR	OCH	MDH	VIS	OCH	NM	6	5	4	3	2
A	410	1500			1600		6	5	4	3	2	
B	410	1500			1600		1900	1580	1270	950	640	
C	410	1900	403	580	2400	576						
D	430	2000			3600							

Remarks : (1) Increased minimums : APCH out of RWY axis. (2) Forbidden North 08/26. VSS checked. DIRCAM

HPMA TACAN RWY 23 CHG : CTA, CTR, R49E1 10 COGNAC CHATEAUBERNARD LFBG

# NATIONAL FRA INSTRUMENT APPROACH

# 11 COGNAC CHATEAUBERNARD LFBG INS GNSS RWY23

ALT AD : 103

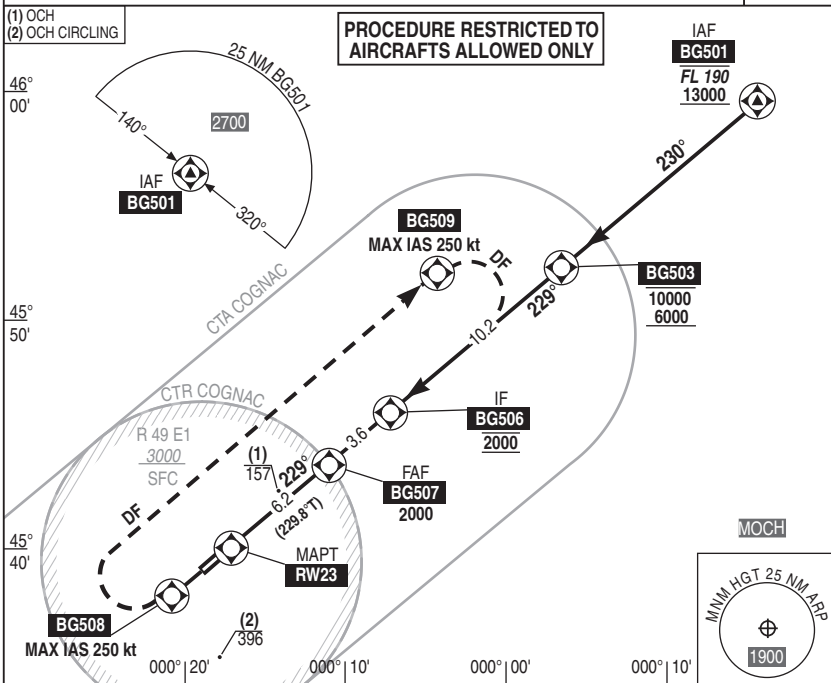
DTHR : 100

21 APR 2022

ATIS : 244.450

VAR  
0°E (20)

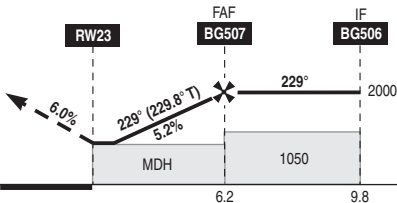
APP : 142.450 234.050  
TWR : 120.075 308.875



REF HGT : ALT DTHR in ft



Missed APCH : Climb to 2000ft QFE to BG508 then turn right direct to BG509 then right to direct to BG506.



DTHR ← (NM)

CAT	LNAV			CIRCLING			DIST RWY23	NM	2	3	4	5	6
	MDH	RVR	OCH	MDH	VIS	OCH							
A		1500			1600		HGT	690	1010	1320	1640	1960	
B	410	1500	404	700	1600	692							
C		1900			2400								
D		1900			3600								

Remarks :

TABLE FOR DATA INDICATOR

N° SEQ	CODING	IDENT	WGS84 COORDINATES		TYPE	DIST NM	MAG TRACK (TRUE TRACK) (°)	TURN	ALT DESCR (')	ATS MIN	ATS MAX	SPD LIMIT (KT)
10	IF	BG501	N45°59'38,6"	E000°15'44,3"	FO				@	FL190	FL190	300
20	TF	BG503	N45°52'34,6"	E000°03'39,7"	FO	11,0	230 (230,1)		B	6000	10000	300
30	TF	BG506	N45°46'00,4"	W000°07'29,5"	FO	10,2	229 (229,8)		@	2000	2000	300
40	TF	BG507	N45°43'40,0"	W000°11'26,9"	FO	3,6	229 (229,8)		@	2000	2000	185
50	TF	RW23	N45°39'40,54"	W000°18'10,05"	FO	6,2	229 (229,8)		+	410		185
60	TF	BG508	N45°37'44,1"	W000°21'25,6"	FO	3,0	229 (229,8)		@		2000	250
70	DF	BG509	N45°52'41,2"	W000°03'58,0"	FO			R	@		2000	250
80	DF	BG506	N45°46'00,4"	W000°07'29,5"	FO			R	@	2000	2000	250

**LEGEND:**HM: Holding manual IF: initial Fix TF: Track to Fix DF: Direct to Fix FO: Fly-Over FB: Fly-by B: Between @: At +: Above -: Below

NATIONAL FRA  
INSTRUMENT APPROACH

SID 01 **COGNAC** CHATEAUBERNARD LFBG

ALT AD : 103 DTHR : 77

21 APR 2022

DEPARTURE BG RE RWY 05

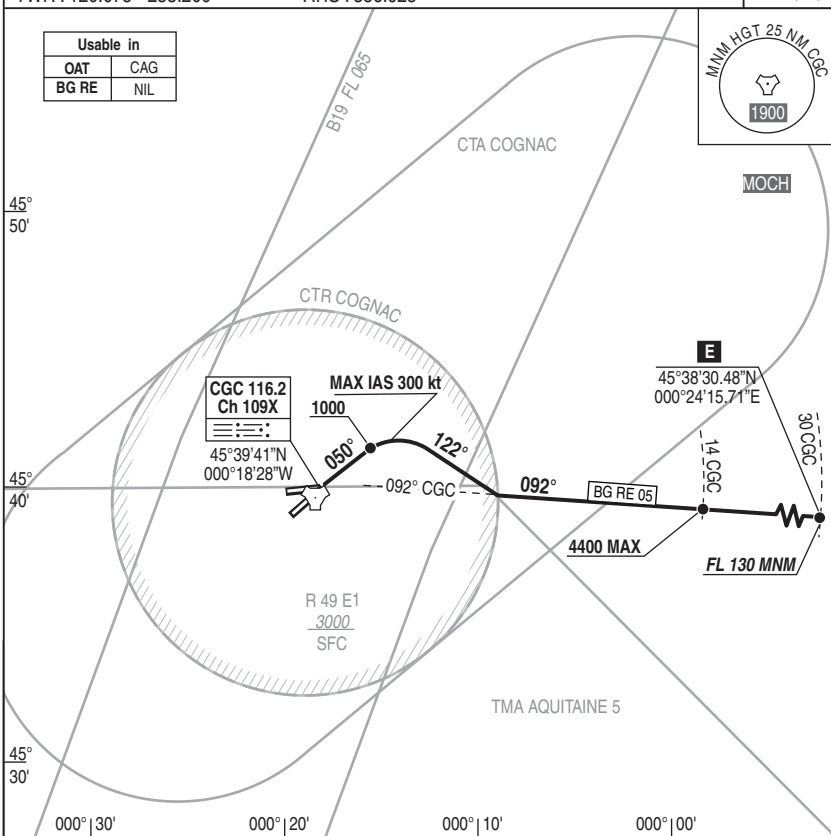
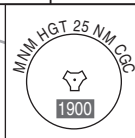
APP : 142.450 - 387.300

VAR  
0°E (20)

TWR : 120.075 - 253.200

ATIS : 386.625

Usable in	
OAT	CAG
BG RE	NIL



**DEPARTURE BG RE RWY 05** : Climb MT 050° to 4400 ft QFE MAX.

At 1000ft QFE, turn right MT 122° to intercept and follow RDL 092° CGC (MT 092°).

At 14 CGC (4400 ft QFE MAX) continue climbing to «E» (30 CGC / FL 130 MNM).

Do not turn before DER.

Communication failure : 7600 and apply french national regulation.

DIRCAM

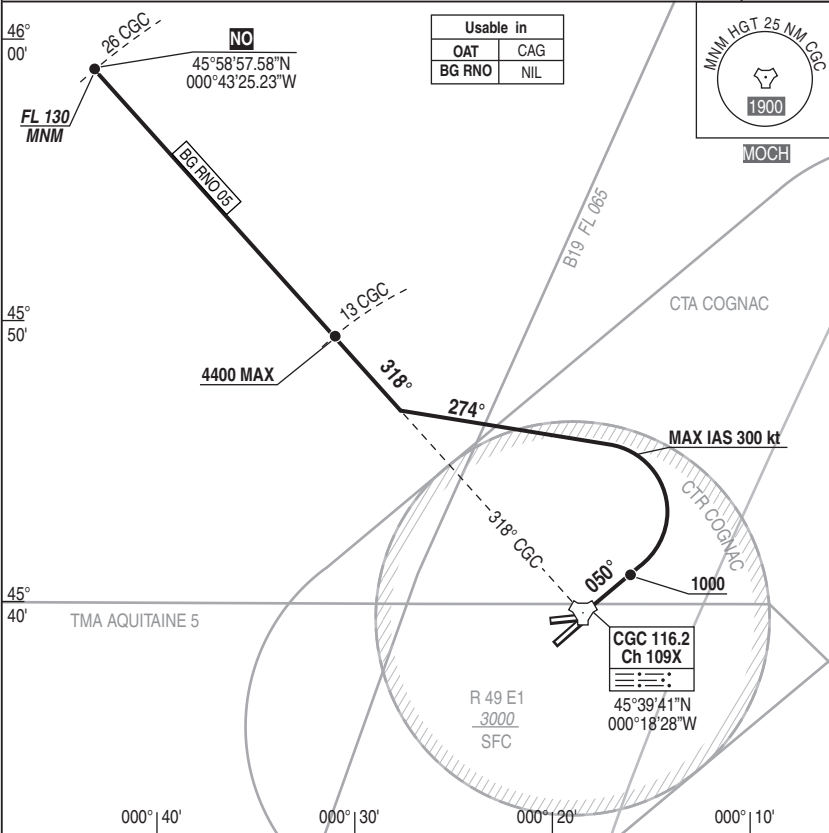
DEPARTURE BG RE RWY 05

CHG : CTR, R49E1.

SID 01 COGNAC CHATEAUBERNARD LFBG

NATIONAL FRA  
 INSTRUMENT DEPARTURE SID 02 **COGNAC** CHATEAUBERNARD LFBG  
 ALT AD : 103 DTHR : 77 21 APR 2022 DEPARTURE BG RNO RWY05

APP : 142.450 - 387.300 VAR 0°E (20)  
 TWR : 120.075 - 253.200 ATIS : 386.625



Usable in	
OAT	CAG
BG RNO	NIL

MNM HGT 25 NM CGC

1900

MOCH

REF HGT : ALT DTHR in ft

**DEPARTURE BG RNO RWY05** : Climb MT 050° to 4400 ft QFE MAX.  
 At 1000ft QFE, turn left MT 274° to intercept and follow RDL 318° CGC (MT 318°).  
 At 13 CGC (4400 ft QFE MAX) continue climbing at 10.8% to «NO» (26 CGC / FL 130 MNM).  
 Do not turn before DER.

Communication failure : 7600 and apply french national regulation.

DIRCAM

DEPARTURE BG RNO RWY05 CHG : CTR, R49E1. SID 02 COGNAC CHATEAUBERNARD LFBG



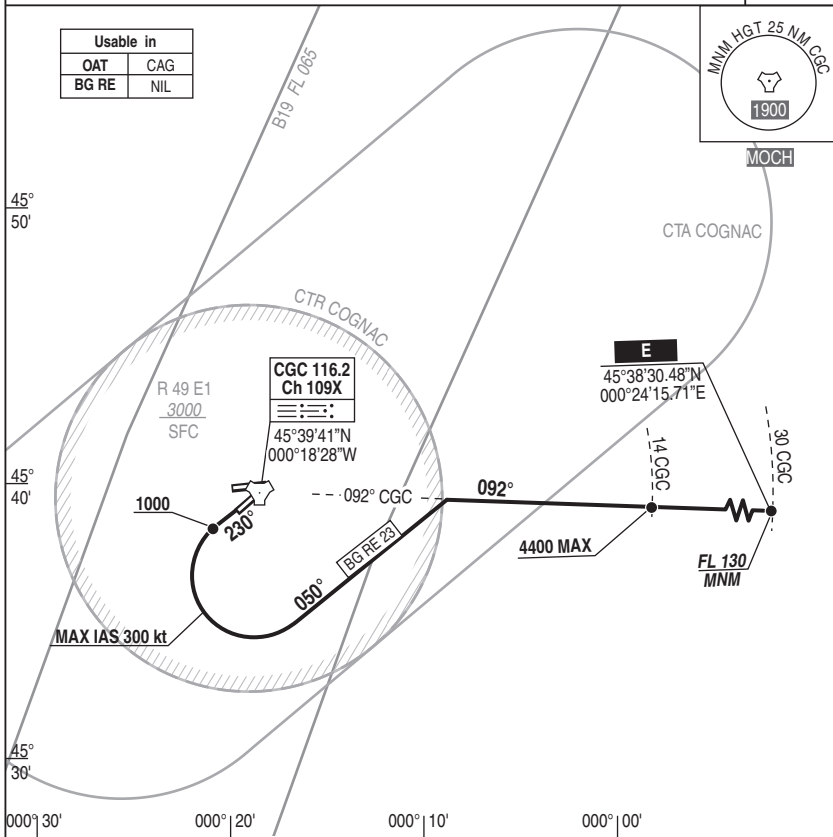
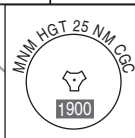
NATIONAL FRA  
 INSTRUMENT DEPARTURE SID 03 **COGNAC** CHATEAUBERNARD LFBG  
 ALT AD : 103 DTHR : 100 21 APR 2022 DEPARTURE BG RE RWY 23

APP : 142.450 - 387.300  
 TWR : 120.075 - 253.200

ATIS : 386.625

VAR  
 0°E (20)

Usable in	
OAT	CAG
BG RE	NIL



**DEPARTURE BG RE RWY 23 : Climb MT 230° to 4400 ft QFE MAX.**

At 1000ft QFE, turn left MT 050° to intercept and follow RDL 092° CGC (MT 092°).

At 14 CGC (4400 ft QFE MAX) continue climbing to «E» (30 CGC / FL 130 MNM).

Do not turn before DER.

Communication failure : 7600 and apply french national regulation.

DIRCAM

NATIONAL FRA

INSTRUMENT DEPARTURE

SID 04 **COGNAC** CHATEAUBERNARD LFBG

ALT AD : 103 DTHR : 100

21 APR 2022

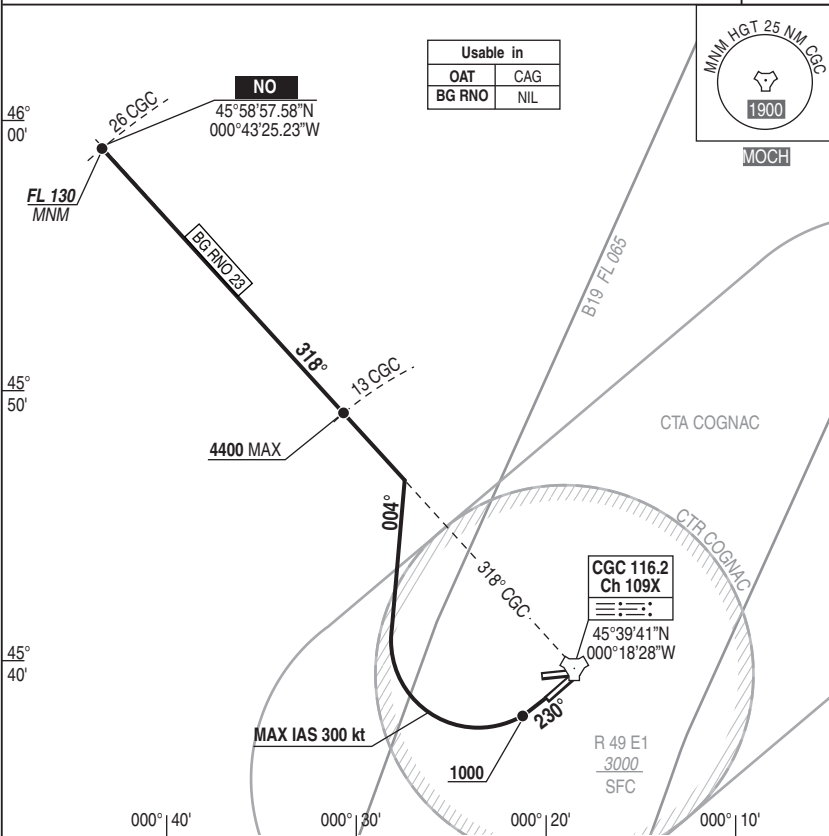
DEPARTURE BG RNO RWY 23

APP : 142.450 - 387.300

TWR : 120.075 - 253.200

ATIS : 386.625

VAR  
0°E (20)



REF HGT : ALT DTHR in ft

**DEPARTURE BG RNO RWY 23 : Climb MT 230° to 4400 ft QFE MAX.**

At 1000ft QFE, turn right MT 004° to intercept and follow RDL 318° CGC (MT 318°).

At 13 CGC (4400 ft QFE MAX) continue climbing at 10.8% to «NO» (26 CGC / FL 130 MNM).

Do not turn before DER.

Communication failure : 7600 and apply french national regulation.

DIRCAM

DEPARTURE BG RNO RWY 23

CHG : CTR, R49E1.

SID 04 **COGNAC** CHATEAUBERNARD LFBG