

NATIONAL FRA AERODROME CHART

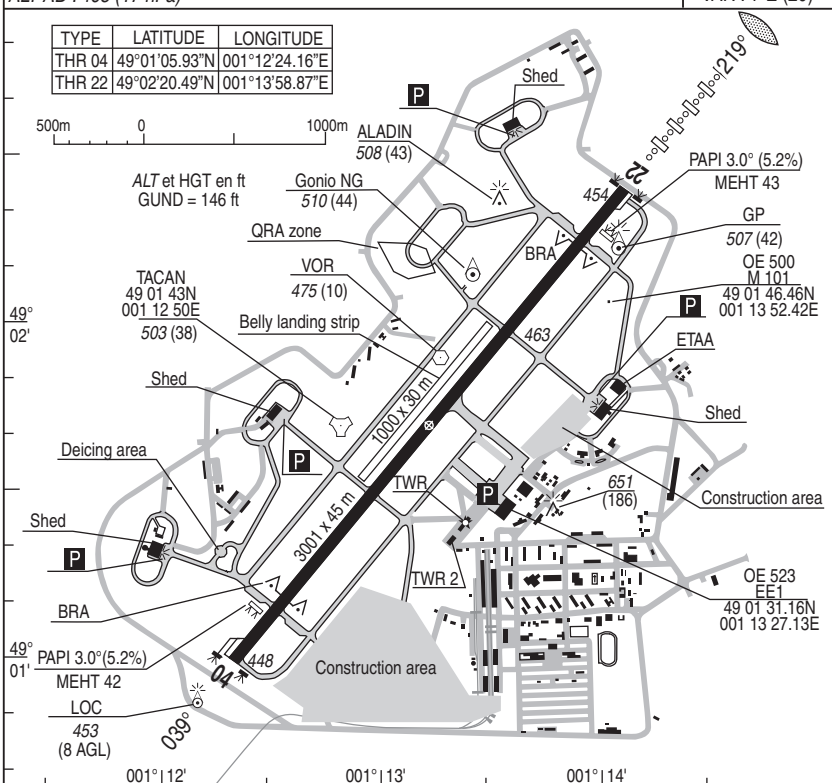
15 JUL 2021

01 EVREUX FAUVILLE LFOE

ALT AD : 465 (17 hPa)

VAR : 1°E (20)

TYPE	LATITUDE	LONGITUDE
THR 04	49°01'05.93"N	001°12'24.16"E
THR 22	49°02'20.49"N	001°13'58.87"E



RWY	LIGHTING		DECLARED DISTANCES				Surface Strength	MINIMUMS TKOF (RVR in m)			
	APPROACH	RWY	TORA	TODA	ASDA	LDA		CAT A.	B.	C.	D.
04	NIL	HI	3001	3001	3001	3001	Paved	400			400
22	HI axial 900m	HI axial O/R					24 F/C/W/T	400			400

OMNIDIRECTIONAL DEPARTURES

RWY04 (Alt THR : 454) : Climb **MT 040°** up to **1500ft QFE** then direct route up to enroute safety altitude.

RWY22 (Alt THR : 448) : Climb **MT 220°** up to **800ft QFE** then direct route up to enroute safety altitude.

MARKINGS - LIGHTINGS :

- THR : LIH green
- HI line axis
- RWY04/22 : distance panels : 300m
- Unmarked TWY
- RWY end : LIH red
- HI line APP 900m RWY22
- Blue lights at RWY / TWY crossing

DIRCAM

DV (Flight director) : HO 02.77.63.32.09 / 06.76.78.94.41
HNO 06.76.78.94.41

BRA RWY 04 - BRA RWY 22 day markings only.

Available O/R only :

Prior notice 45mn (working hours) and 2h (outside working hours)

REFUELING :

F18 (prior notice 15 days) - F34 - F35 - Oxygen.

ATS HOR :

- Mon/Wed: 0700/1600, Thu-Fri : 0700/1500. Outside HOR : O/R before 1400

- Saturday, Sunday, days off: O/R previous opened day before 1400

- SUM : -1 Hr

PPR

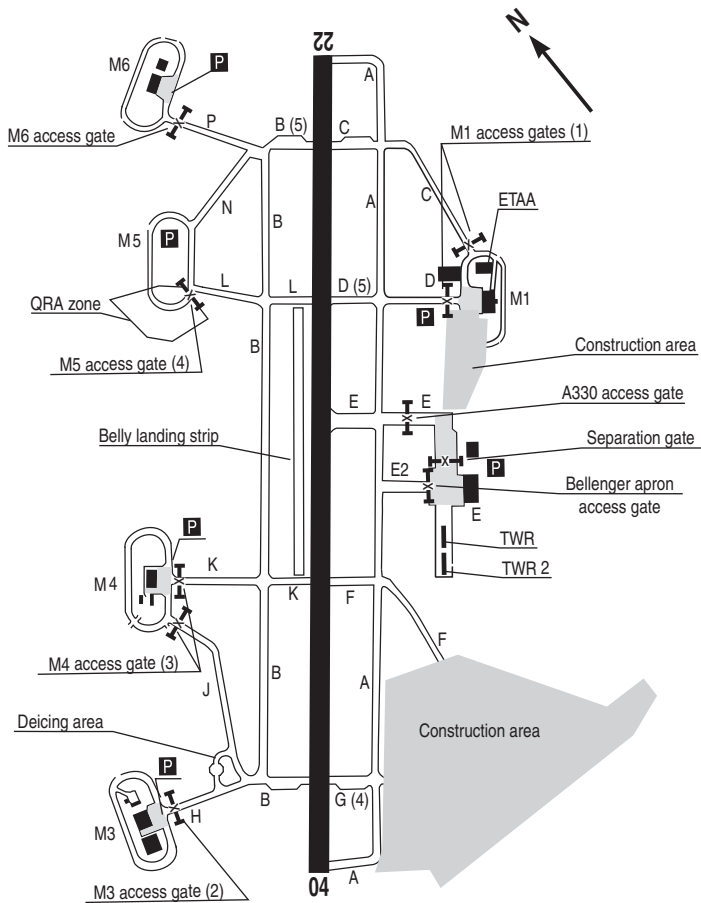
- PPR mandatory : please insert in field 18 of your FPL;

For any changes, contact flight director(DV)

- Descent and climbing operations, procedures or exercises using airspaces associated to Evreux airfield are subjected to permission of :

ATS supervisor : 811.105.4465(MIL) 02.32.62.13.65(CIV)

DIRCAM



Ground taxiing :

(1) Access gate M1 strips C and D. Distance TWY axis / gate 24m.
Authorized ACFT (out C160 and CN35) wingspan ≤ 45m. MAX speed 15 kts.

(2) Access gate M3 strip H. Distance TWY axis / gate 28m.
Authorized ACFT (out C160 and CN35) wingspan ≤ 45m. MAX speed 15 kts.

(3) Access gate M4 strip J. Distance TWY axis / gate 18m.
Authorized ACFT (out C160 and CN35) wingspan ≤ 30m. MAX speed 15 kts.

Strip K. Distance TWY axis / gate 21m.
Authorized ACFT (out C160 and CN35) wingspan ≤ 40m. MAX speed 15 kts.

(4) Strips B, D et G usable by based ACFT except A 330-AUG.



VISUAL ARR & DEP

ALT AD : 465 (17 hPa)

30 NOV 2023

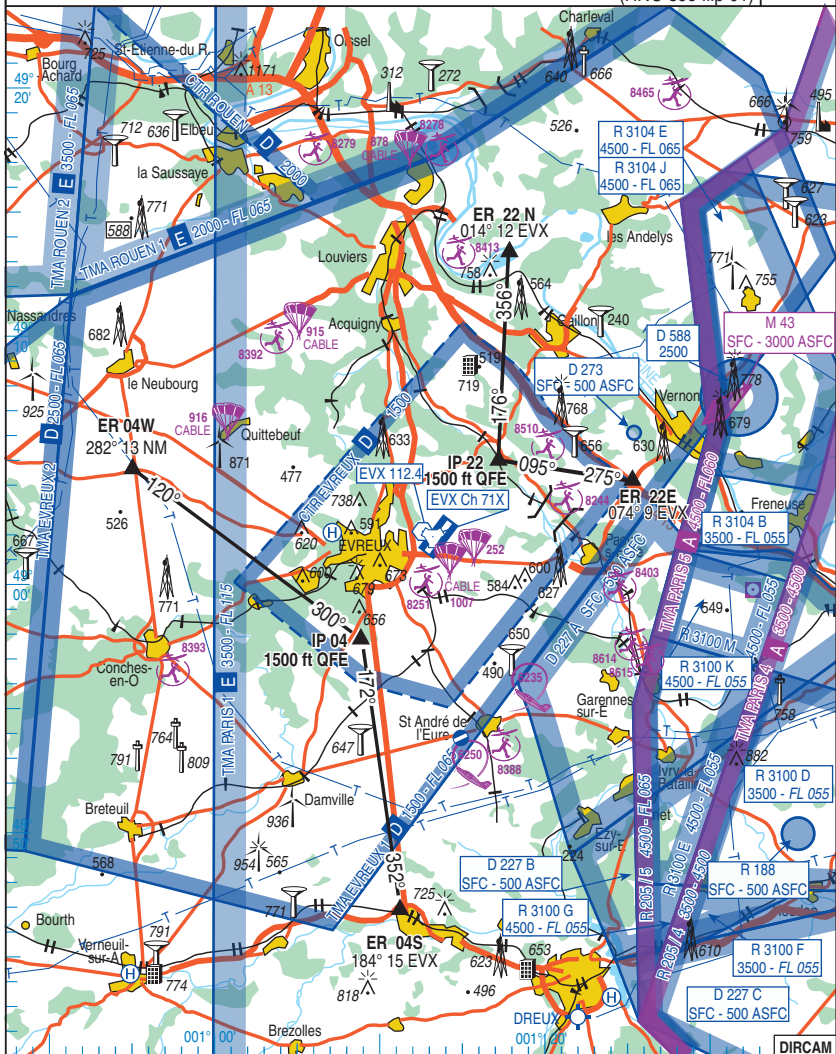
02 EVREUX FAUVILLE LFOE

JET RWY04 & 22

APP : 118.125 - 362.200
TWR : 119.700 - 122.100 - 125.375 - 399.525 - 257.800

AD FAF restricted use
5.5 Km E from EVREUX
DV : HO 02.77.63.32.09 / 06.76.78.94.41
(HNO see flip 01)

VAR
1°E
(20)



JET RWY04 & 22

CHG : AEM 8465.

02 EVREUX FAUVILLE LFOE

DIRCAM

05 DEC 2019

03 EVREUX FAUVILLE LFOE

VISUAL ARR & DEP INSTRUCTIONS

Airspace restriction :

Refer to AIP FRANCE or French Defense 1/1.000.000 aeronautical chart.

ARR:

Contact EVREUX APP 2 MIN before CTR class D ingress.

Fly at 1500 ft QFE on entry points (**ER**).

Join **IP 04** or **IP 22** (IP located 3 NM straight ahead from lead in RWY).

Fly break at 1500 ft QFE.

RWY 04 : Break to RIGHT.

RWY 22 : Break to LEFT.

DEP:

Climb straight ahead to 1500 ft till **IP 04** or **IP 22**.

Fly own navigation when cleared by CTL.

Report exiting CTR.

OBSERVATIONS

Overfly EVREUX city below 5000 ft AGL is forbidden.

ST ANDRE DE L'EURE aeroclub: high activity ACFT and ULM. Fly 3 NM MNM outside AD vicinity.

LDG submitted to PPR from flight director (LFOEZPZX or MIL TEL : 811.105.2308).PPR NR mentioned in FPL item 18.

DIRCAM

NATIONAL FRA

04 EVREUX FAUVILLE LFOE

ALT AD : 465 (17 hPa)

05 NOV 2020

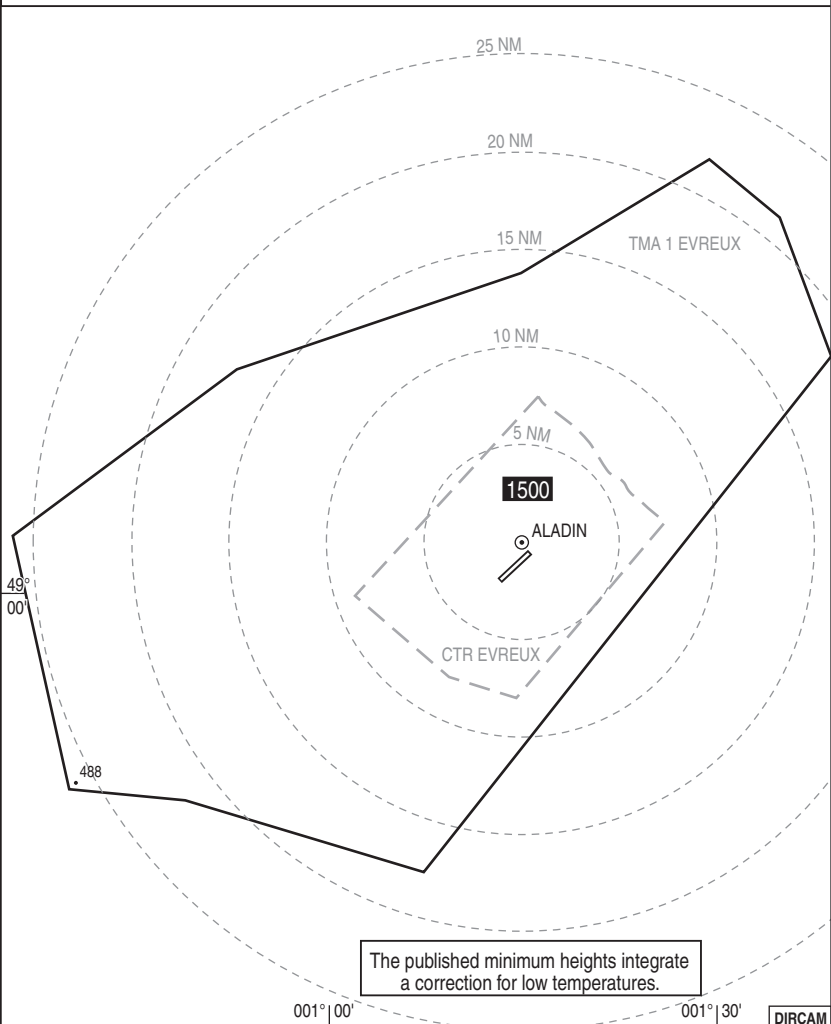
HMG

APP : 118.125 - 362.200

VAR
1°E
(20)

TWR : 119.700 - 122.100 - 125.375 - 399.525

COMMUNICATION FAILURE : Apply french national regulation.



HMG

CHG : Obstacles revise file, VAR.

04 EVREUX FAUVILLE LFOE

DIRCAM

NATIONAL FRA INSTRUMENT APPROACH

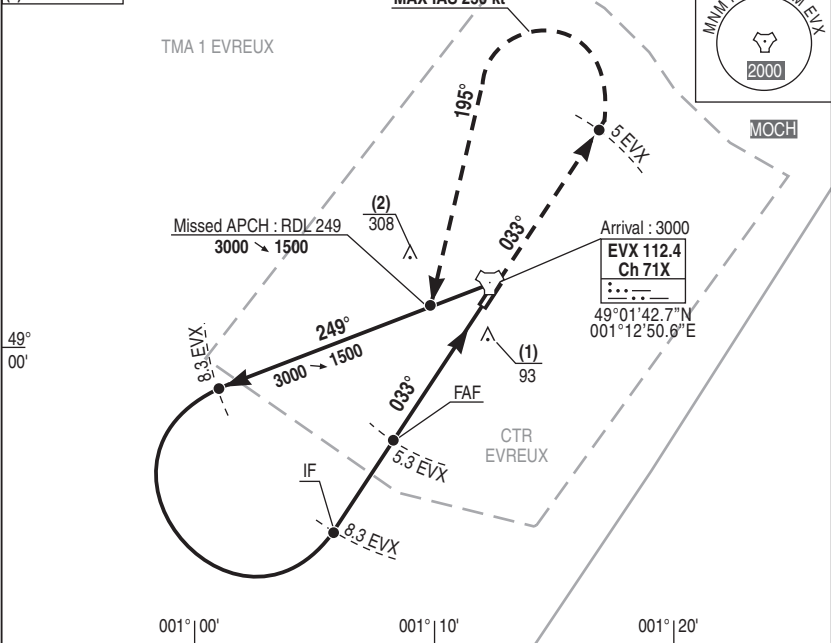
ALT AD : 465 THR : 448

05 NOV 2020

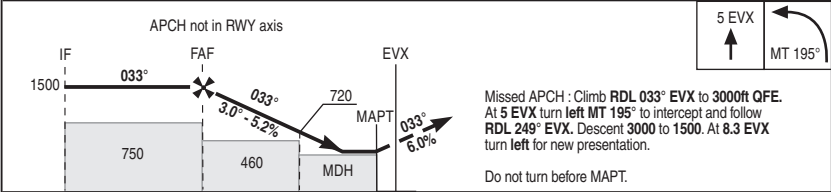
05 EVREUX FAUVILLE LFOE
HPMA TACAN RWY 04

APP : 118.125 - 362.200	VAR 1°E (20)
TWR : 125.375 - 399.525	

- (1) OCH TAC
- (2) OCH CIRCLING



REF HGT : ALT THR in ft



8.3	7.6	5.3	2.8	0.7	0	TACAN → (NM)
		4.6	2.1			THR → (NM)

CAT	TACAN			CIRCLING			TAC EVX			
	MDH	RVR	OCH	MDH	VIS	OCH	NM	5	4	3
A	340	1500	339	610	1600	603	5	4	3	2
B				610	1600		1420	1100	790	470
C				610	2400					
D				700	3600					

Remarks : DIRCAM

NATIONAL FRA INSTRUMENT APPROACH

ALT AD : 465 THR : 454

05 NOV 2020

06 **EVREUX FAUVILLE LFOE**
HPMA RADAR / ILS RWY 22

APP : 118.125 - 362.200

ILS : EVX 111.3

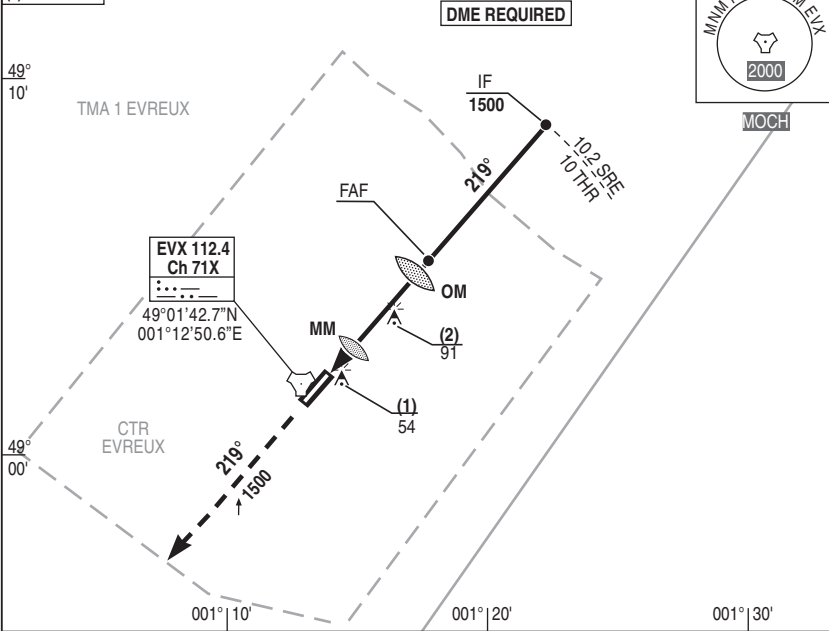
RDH : 49

VAR
1°E (20)

TWR : 125.375 - 399.525

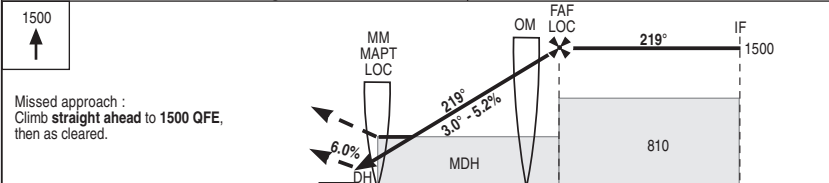
⋯-⋯-⋯

(1) OCH ILS
(2) OCH LOC



ILS True heading : 219.88°

REF HGT : ALT THR in ft



THR ← (NM)	0.6	3.9	4.6	10
SRE ← (NM)	0.8	4.1	4.8	10.2
DME ← (NM)	1.6	4.9	5.6	11

CAT	ILS (1)			LOC			TACAN EVX				
	DH	RVR	OCH	MDH	RVR	OCH	NM	OM	4	3	2
A	250	800	152	340	800	337	1300	1020	700	380	
B											
C											
D											

Remarks : (1) Increased minimums. VSS checked. DIRCAM

NATIONAL FRA INSTRUMENT APPROACH

07 EVREUX FAUVILLE LFOE HPMA TACAN ILS or LOC RWY 22

ALT AD : 465 THR : 454

05 NOV 2020

APP : 118.125 - 362.200

ILS : EVX 111.3

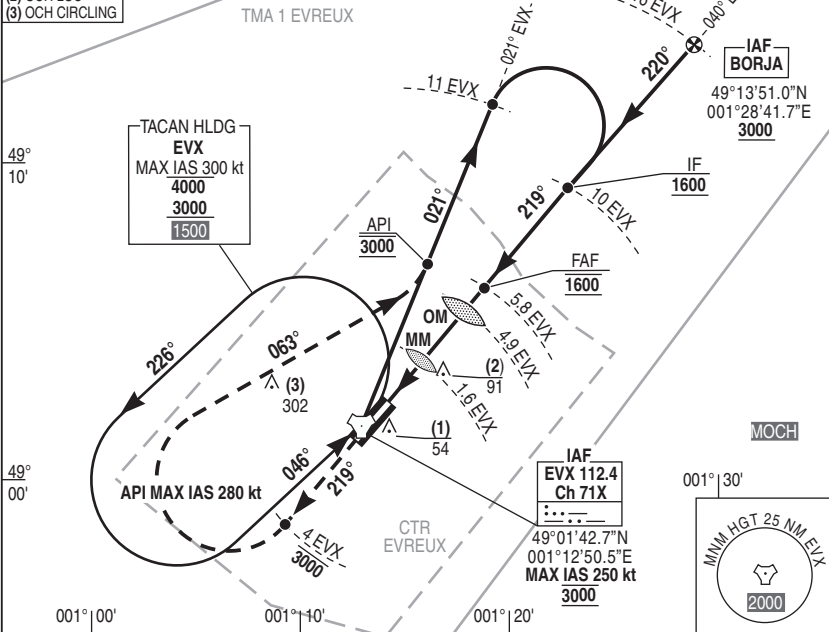
RDH : 49

VAR 1°E (20)

TWR : 125.375 - 399.525

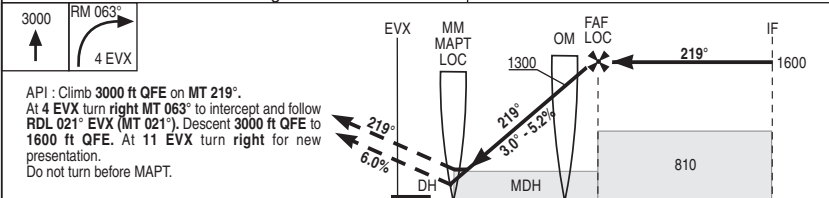
- (1) OCH ILS
- (2) OCH LOC
- (3) OCH CIRCLING

TMA 1 EVREUX



ILS True heading : 219.88°

REF HGT : ALT THR in ft



API : Climb 3000 ft QFE on MT 219°.
At 4 EVX turn right MT 063° to intercept and follow RDL 021° EVX (MT 021°). Descent 3000 ft QFE to 1600 ft QFE. At 11 EVX turn right for new presentation.
Do not turn before MAPT.

TACAN	← (NM)	1.6	4.9	5.8	10.0
THR	← (NM)	0.6	4.0	4.9	9.0

CAT	ILS			LOC			CIRCLING			TACAN EVX				
	DH	RVR	OCH (1)	MDH	RVR	OCH	MDH	RVR	OCH	NM	OM 4.9	4	3	2
A							600	1600						
B							600	1600						
C	250	800	152	340	800	337	600	2400	597					
D							700	3600						
										HGT	1300	1020	700	380

Remarks : (1) Increased minimums.

DIRCAM

NATIONAL FRA INSTRUMENT APPROACH

ALT AD : 465 THR : 454

05 NOV 2020

08 EVREUX FAUVILLE LFOE
HPMA TACAN RWY 22

APP : 118.125 - 362.200

VAR
1°E (20)

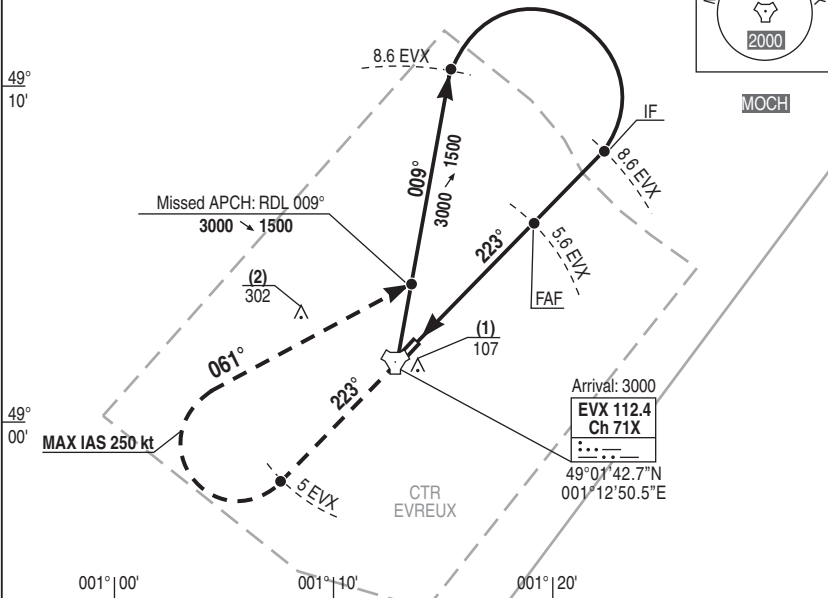
TWR : 125.375 - 399.525

(1) OCH TAC
(2) OCH CIRCLING

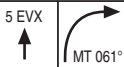
TMA 1 EVREUX



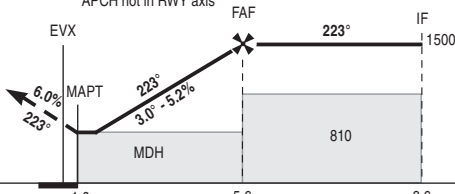
MOCH



REF HGT : ALT THR in ft



APCH not in RWY axis



Missed APCH: Climb RDL 223° EVX to 3000ft QFE.
At 5 EVX turn right MT 061° to intercept and follow RDL 009° EVX. Descent 3000 to 1500. At 8.6 EVX turn right for new presentation.
Do not turn before MAPT.

TACAN ← (NM)
THR ← (NM)

CAT	TACAN			CIRCLING		
	DH	RVR	OCH	MDH	VIS	OCH
A				600	1600	
B				600	1600	
C	360	900	353	600	2400	597
D				700	3600	

TACAN EVX			
NM	5	4	3
HGT	1320	1000	690

Remarks :

DIRCAM

HPMA TACAN RWY 22

CHG : Obstacles revise file, VAR.

08 EVREUX FAUVILLE LFOE

NATIONAL FRA
INSTRUMENT APPROACH

ALT AD : 465 THR : 448

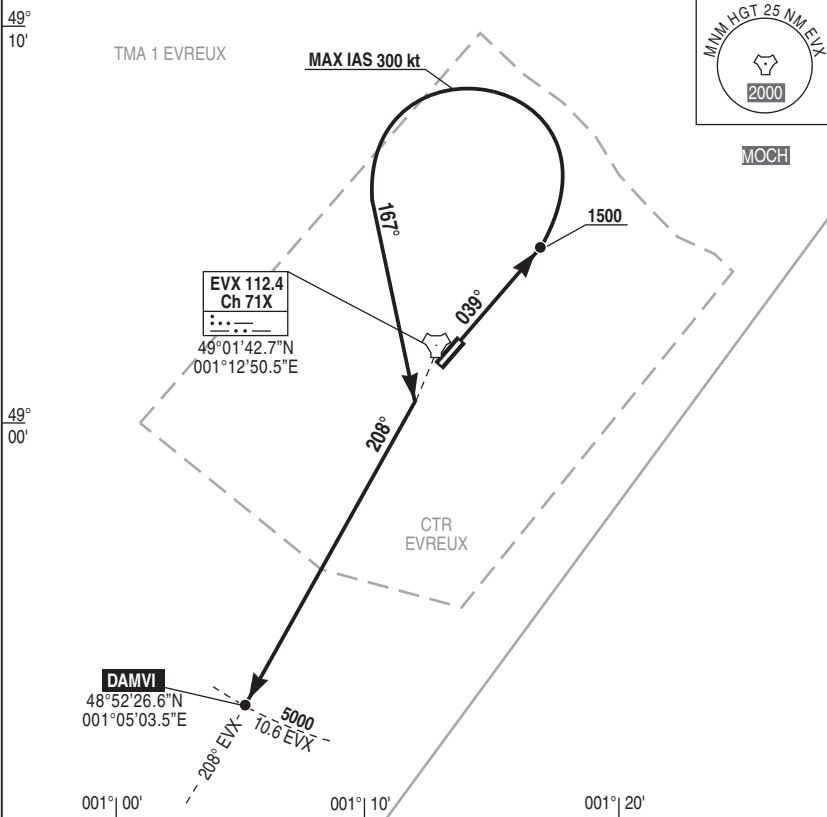
05 NOV 2020

SID 01 **EVREUX** FAUVILLE LFOE
DEPARTURE "DAMVI" RWY 04

APP : 118.125 - 362.200

TWR : 125.375 - 399.525

VAR
1°E (20)



REF HGT : ALT THR in ft

DEPARTURE "DAMVI" RWY04 : Climb MT 039° up to 1500ft QFE then turn left MT 167° to intercept and follow RDL 208° EVX (MT 208°) up to 10.6NM EVX at 5000ft QFE.

Do not turn before DER.

Communication failure : 7600 and apply french national regulation.

DIRCAM

NATIONAL FRA
INSTRUMENT APPROACH

ALT AD : 465 THR : 448

05 NOV 2020

SID 02 **EVREUX** FAUVILLE LFOE
DEPARTURE "DAMVI" RWY 22

APP : 118.125 - 362.200

TWR : 125.375 - 399.525

VAR
1°E (20)

EVX 112.4
Ch 71X
49°01'42.7"N
001°12'50.5"E



MOCH

49°
00'

800

219°

208°

CTR
EVREUX

TMA 1
EVREUX

DAMVI

48°52'26.6"N
001°05'03.5"E

5000

208° EVX

10.6 EVX

001° 10'

REF HGT : ALT THR in ft

DEPARTURE "DAMVI" RWY22 : Climb **MT 219°** up to **800ft QFE** then turn **left** to intercept and follow **RDL 208° EVX (MT 208°)** up to **10.6NM EVX** at **5000ft QFE**.

Do not turn before DER.

Communication failure : 7600 and apply french national regulation.

DIRCAM

DEPARTURE "DAMVI" RWY 22

CHG : Obstacles file revise, VAR.

SID 02 EVREUX FAUVILLE LFOE