

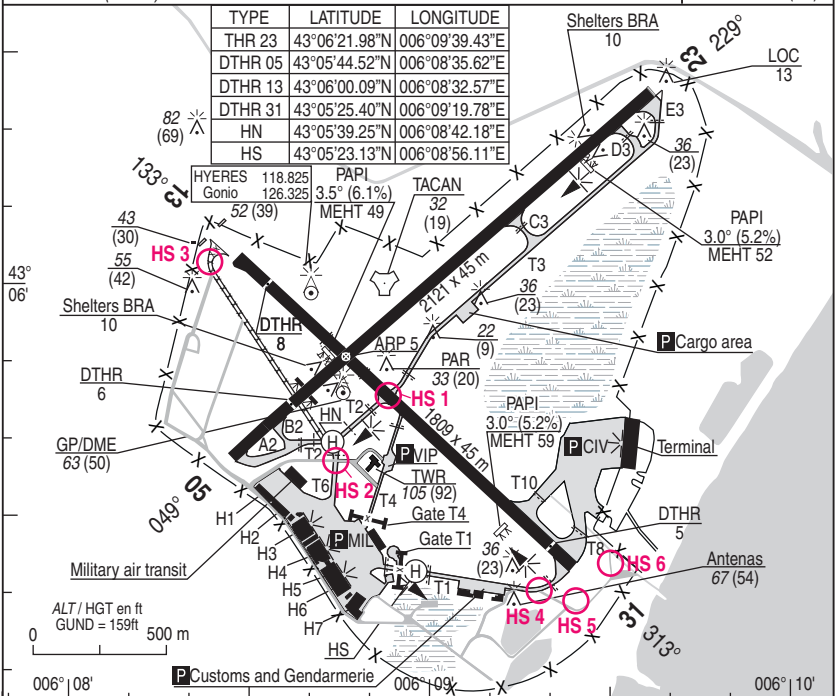
# NATIONAL FRA AERODROME CHART

20 APR 2023

# 01 HYERES LE PALYVESTRE LFTH

ALT AD : 13 (1 hPa)

VAR : 2°E (20)



| RWY | LIGHTING         |       | DECLARED DISTANCES |                |                |                | Surface    | Strength | MINIMUMS TKOF (RVR in m) |  |  |  |  |       |
|-----|------------------|-------|--------------------|----------------|----------------|----------------|------------|----------|--------------------------|--|--|--|--|-------|
|     | APPROACH         | RWY   | TORA               | TODA           | ASDA           | LDA            |            |          | CAT A. B. C. D.          |  |  |  |  | CAT H |
| 05  | 2 flashing light | HI/BI | 2121               | 2121           | 2121           | 1850           | Paved      |          | ≥ 400                    |  |  |  |  | 200   |
| 23  | NIL              | HI/BI | 2061               | 2061           | 2061           | 2061           | 46 F/C/W/T |          |                          |  |  |  |  | 200   |
| 13  | NIL              | BI    | 1809               | 1809           | 1809           | 1622           | Paved      |          | ≥ 550                    |  |  |  |  | 200   |
| 31  | NIL              | BI    | 1795<br>-1809*     | 1795<br>-1809* | 1795<br>-1809* | 1686<br>-1700* | 46 F/C/W/T |          |                          |  |  |  |  | 200   |

\* RWY31 serviceable with this values only when average headwind is greater or equal to 20Kts.

TWY3 prohibited at night.

### MARKINGS :

- Day HI RWY05/23 - BI RWY13/31 - PAPI RWY05/23 and 31
- PAPI RWY05 (3.5° slope) & 23 (3.0° slope) AST.
- PAPI RWY05 : use is mandatory if RWY05 is in use (day and night).

DIRCAM

**USE RESTRICTIONS :**

- After burner is forbidden except with exemption from AD commander.
- RWY 05-23 is main RWY
- RWY 13-31 is secondary RWY only usable when meteorological conditions can not allow use of RWY 05-23 or RWY 05-23 unavailable
- LDG RWY 13 is forbidden expect with exemption from AD commander.
- LDG RWY 31 is forbidden with tail wind component.
- Forbidden to fighters of training Jet from 01/07 to 31/08
- All QFU, MAX crosswind limitation: - 25 kts dry RWY - 20 kts wet RWY calculated with medium wind

**OTHER INFORMATION**

- For state ACFT marshalls mandatory for start-up.
- PPR mandatory for MIL ACFT
- Taxi is inadvisable on BRA (7cm outside ground) for light ACFT, small wheels or small ground clearance ACFT.
- RWY 05/23 : BAK arresting cable and arresting cable with textile brakes, announced by NOTAM and ATIS.
- RWY 13/31 : Arresting cable with textile brakes, announced by NOTAM and ATIS.
- Turn around area end of RWY 23, 31 until A 321
- Turn around area end of RWY 13 chosen until A 321
- Gate T4 : 28m width, 2.30m high ; Gate T1 : 46m width, 2.30m high.

**REFUELING**

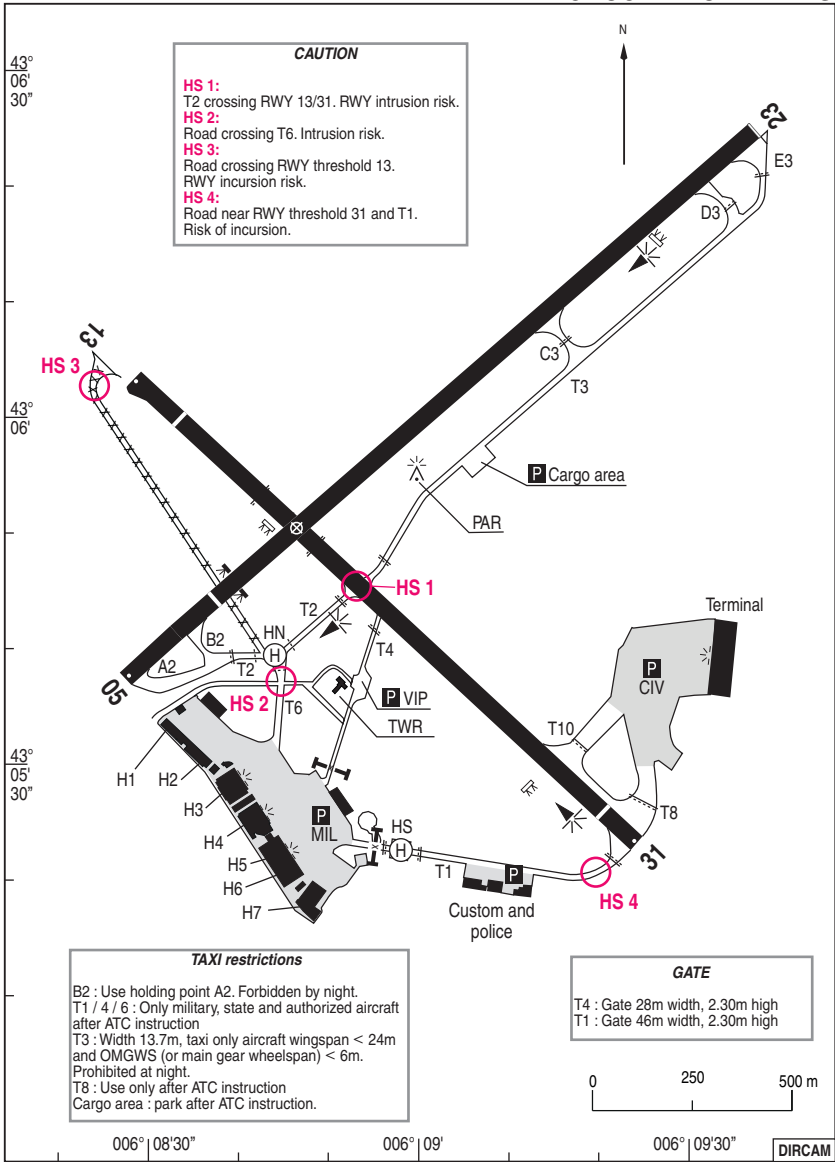
- F34 – Gaseous Oxygen & Nitrogen
- HOR AVT : HOR ATS

**ATS HOR :**

Announced by NOTAM.

**CAUTION**

- HS 1:**  
T2 crossing RWY 13/31. RWY intrusion risk.
- HS 2:**  
Road crossing T6. Intrusion risk.
- HS 3:**  
Road crossing RWY threshold 13.  
RWY incursion risk.
- HS 4:**  
Road near RWY threshold 31 and T1.  
Risk of incursion.

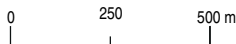


**TAXI restrictions**

- B2 : Use holding point A2. Forbidden by night.
- T1 / 4 / 6 : Only military, state and authorized aircraft after ATC instruction
- T3 : Width 13.7m, taxi only aircraft wingspan < 24m and OMGWS (or main gear wheelspan) < 6m. Prohibited at night.
- T8 : Use only after ATC instruction
- Cargo area : park after ATC instruction.

**GATE**

- T4 : Gate 28m width, 2.30m high
- T1 : Gate 46m width, 2.30m high



# VISUAL ARR & DEP

ALT AD : 13 (1 hPa)

20 APR 2023

# 02 HYERES LE PALYVESTRE LFTH

JET RWY 31

APP : 126.325 - 339.250  
TWR : 121.000 - 343.325

AD FNF  
3 Km SE from HYERES  
TEL : 04.22.44.42.81 (CTL)

VAR  
2°E  
(20)



JET RWY 31 (right hand circuit)

CHG : D 54 N, D 54 A1.

02 HYERES LE PALYVESTRE LFTH

# VISUAL ARR & DEP

ALT AD : 13 (1 hPa)

20 APR 2023

# 03 HYERES LE PALYVESTRE LFTH

JET RWY 23

APP : 126.325 - 339.250  
TWR : 121.000 - 343.325

AD NFN  
3 Km SE from HYERES  
TEL : 04.22.44.42.81 (CTL)

VAR  
2°E  
(20)



JET RWY 23

CHG : D 54 N, D 54 A1.

03 HYERES LE PALYVESTRE LFTH

DIRCAM

**VISUAL ARR & DEP RWY 31 and RWY 23****RWY 31****ARRIVAL :**

Report Entry point 2500 ft QFE, then join IP : CAP DES MEDES at 2500 ft QFE on APP clearance.

**DEPARTURE :**

End of RWY, MT 303° is mandatory and climb to 2000 ft QFE MNM, fly own navigation only on APP clearance.

**RWY 23****ARRIVAL :**

Report Entry point 2500 ft QFE, then join IP : North LA LONDE at 2500 ft QFE on APP clearance.

**DEPARTURE :**

End of RWY, MT 197° is mandatory and climb to 1500 ft QFE MNM, fly own navigation only on APP clearance.

**PATTERN CIRCUIT :**

QFU 23 : Left hand circuit.

QFU 31 : Right hand circuit.

QFU 13 : forbidden except Air Base Commander agreement.



**VISUAL ARR & DEP RWY 05****ARRIVAL :**

Report Entry point 2500 ft QFE, then join IP : W Pt of GIENS at 2500 ft QFE on APP clearance.

**DEPARTURE :**

End of RWY, MT 049° is mandatory and climb to 1500 ft QFE MNM, fly own navigation only on APP clearance.

**PATTERN CIRCUIT :**

QFU 05 : Right hand circuit.

QFU 13 : forbidden except Air Base Commander agreement.



# NATIONAL FRA

ALT AD : 13 (1 hPa)

# 07 HYERES LE PALYVESTRE LFTH

31 DEC 2020

HMG

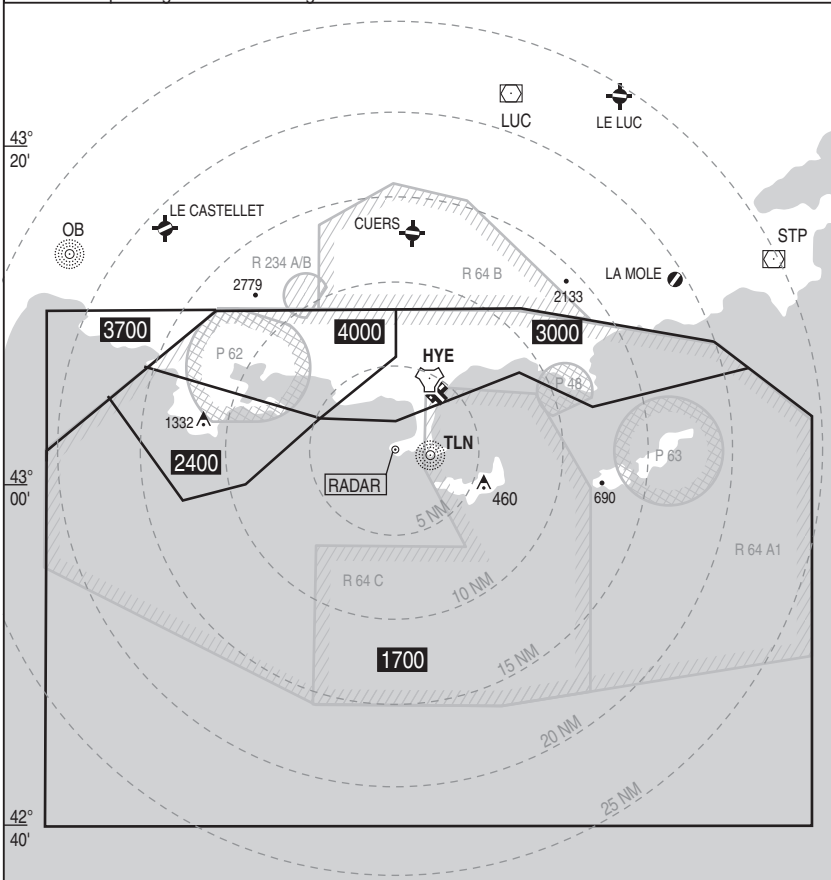
APP : 126.325 - 339.250

TWR : 121.000 - 343.325

VAR  
2°E  
(20)

COMMUNICATION FAILURE : Apply french national regulation.

HMG corresponding to normal working of APP surveillance means.



The published minimum heights integrate a correction for low temperatures.

# NATIONAL FRA INSTRUMENT APPROACH

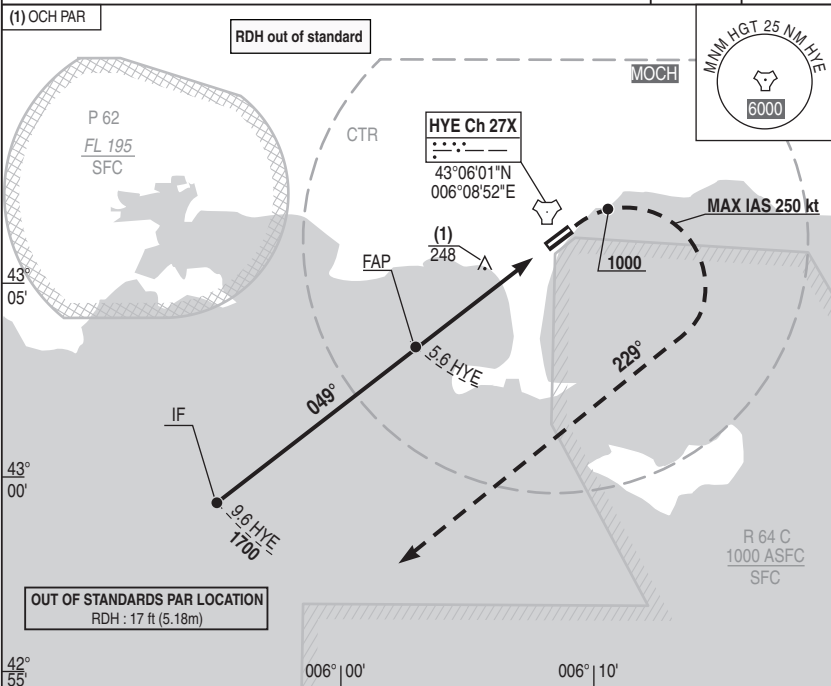
ALT AD : 13 DTHR : 6

## 08 HYERES LE PALYVESTRE LFTH

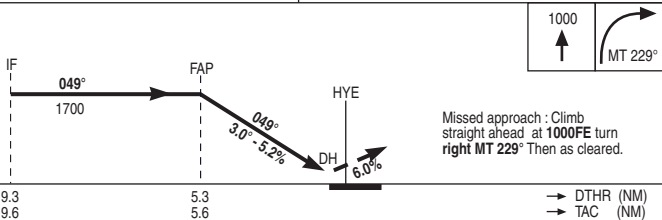
31 DEC 2020

SRE / PAR RWY 05

|                         |                         |          |              |
|-------------------------|-------------------------|----------|--------------|
| APP : 126.325 - 339.250 | TWR : 121.000 - 343.325 | RDH : 17 | VAR 2°E (20) |
| PAR : 123.300 - 232.525 |                         |          |              |



REF HGT : ALT DTHR in ft



| CAT | PAR  |         |     | CIRCLING (2) |      |      |
|-----|------|---------|-----|--------------|------|------|
|     | DH   | RVR (1) | OCH | MDH          | VIS  | OCH  |
| A   | 1500 |         |     |              | 1600 |      |
| B   | 1500 |         |     |              | 1600 |      |
| C   | 1600 |         | 346 | 1300         | 2400 | 1290 |
| D/E | 1600 |         |     |              | 3600 |      |

Remarks : (1) By night use VIS circling. (2) Forbidden North of RWY 05/23. DIRCAM

SRE / PAR RWY 05

CHG : VAR

08 HYERES LE PALYVESTRE LFTH

# NATIONAL FRA INSTRUMENT APPROACH

ALT AD : 13 DTHR : 6

31 DEC 2020

## 09 HYERES LE PALYVESTRE LFTH TACAN / PAR RWY 05

APP : 126.325 - 339.250

PAR : 123.300 - 232.525

TWR : 121.000 - 343.325

RDH : 17

VAR 2°E (20)

(1) OCH PAR

RDH out of standard

IAF  
HYE Ch 27X

MOCH



43° 10'

UNDER RADAR SURVEILLANCE

OUT OF STANDARDS PAR LOCATION  
RDH : 17 ft (5.18m)

43° 00'

IAF  
O  
42°47'19.94"N  
005°35'18.63"E

42° 50'

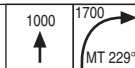
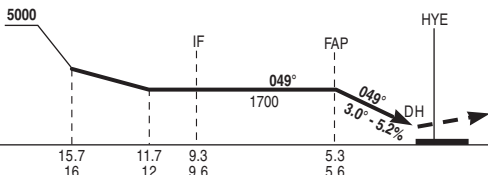
42° 40'

005° 40'

006° 00'

006° 20'

REF HGT : ALT DTHR in ft



Missed APCH : Climb **straight ahead**. At 1000 ft QFE turn right MT 229° climbing to 1700ft QFE to intercept and follow RDL 208°(MT 208°) HYE. At 12 NM turn right for new presentation.

→ DTHR (NM)  
→ TAC (NM)

| CAT | PAR |         |     | CIRCLING (2) |      |      |
|-----|-----|---------|-----|--------------|------|------|
|     | DH  | RVR (1) | OCH | MDH          | VIS  | OCH  |
| A   | 350 | 1500    | 346 | 1300         | 1600 | 1290 |
| B   |     | 1500    |     |              | 1600 |      |
| C   |     | 1600    |     |              | 2400 |      |
| D/E |     | 1600    |     |              | 3600 |      |

Remarks : (1) By night use VIS circling. (2) Forbidden North of RWY 05/23.

DIRCAM

TACAN / PAR RWY 05

CHG : VAR

09 HYERES LE PALYVESTRE LFTH

# NATIONAL FRA INSTRUMENT APPROACH

ALT AD : 13 DTHR : 6

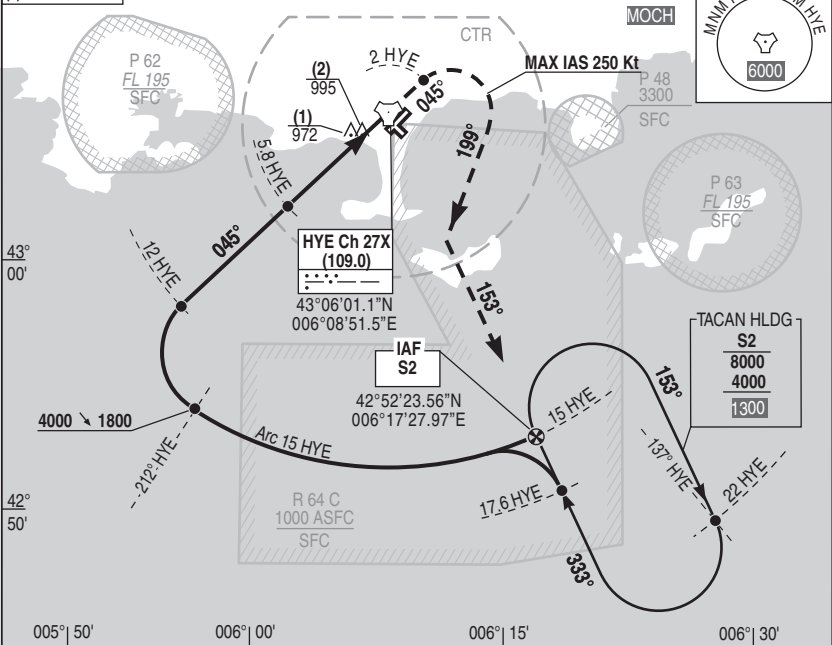
# 10 HYERES LE PALYVESTRE LFTH HPMA TACAN RWY 05

31 DEC 2020

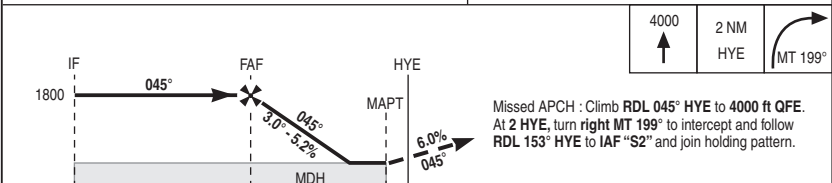
APP : 126.325 - 339.250  
TWR : 121.000 - 343.325

VAR  
2°E (20)

(1) OCH TACAN  
(2) OCH CIRCLING



REF HGT : ALT DTHR in ft



→ TAC (NM)  
→ DTHR (NM)

| CAT | TACAN |      |      | CIRCLING (1) |      |      | TACAN<br>NM | HGT  | 5 | 4    | 3   |
|-----|-------|------|------|--------------|------|------|-------------|------|---|------|-----|
|     | MDH   | RVR  | OCH  | MDH          | VIS  | OCH  |             |      |   |      |     |
| A   |       | 1500 |      |              | 1600 |      |             | 1547 |   | 1237 | 917 |
| B   |       | 1500 |      |              | 1600 |      |             |      |   |      |     |
| C   | 1090  | 2400 | 1083 | 1300         | 2400 | 1290 |             |      |   |      |     |
| D   |       | 2400 |      |              | 3600 |      |             |      |   |      |     |

Remarks : (1) Forbidden North of RWY 05/23. DIRCAM