

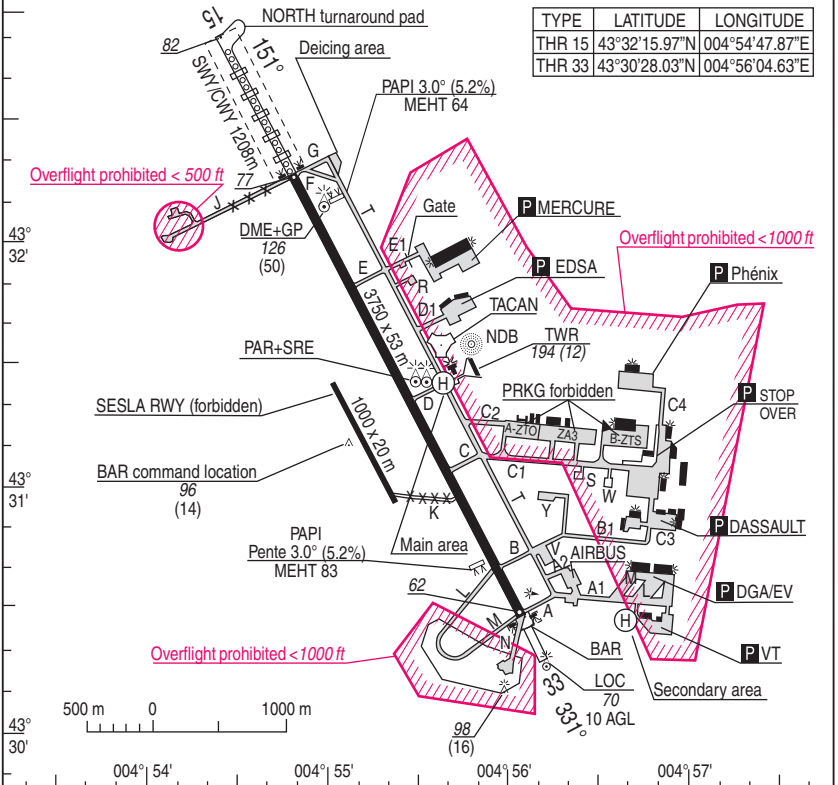
NATIONAL FRA AERODROME CHART

31 DEC 2020

01 ISTRES LE TUBE LFMI

ALT AD : 82 (3 hPa)

VAR : 2°E (20)



TYPE	LATITUDE	LONGITUDE
THR 15	43°32'15.97"N	004°54'47.87"E
THR 33	43°30'28.03"N	004°56'04.63"E

ALT and HGT AAL in ft GUND = 162 ft	MINIMUMS TKOF (RVR in m)	RWY	DAY	NIGHT
		15	≥ 150	≥ 150
		33	≥ 150	≥ 150

DV (Flight Director) : 04 42 56 13 49 - 811 125 8195 (or 4455)

SPECIFIC INSTRUCTIONS

- See VISUAL APP
- JET pattern HGT : 2000 ft from entry point to IP then pattern at 1500 ft QFE.
- Right hand pattern QFU 15. No BAR QFU 33.

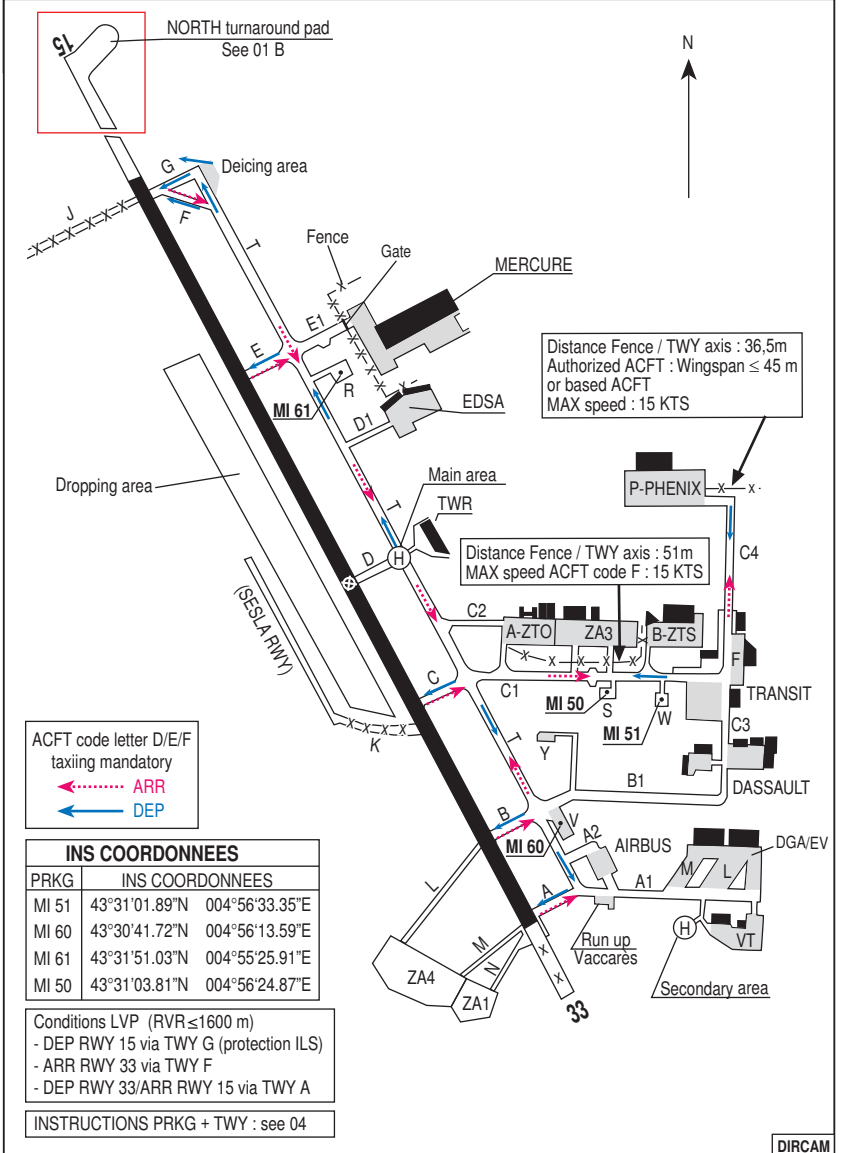
LIGHTING

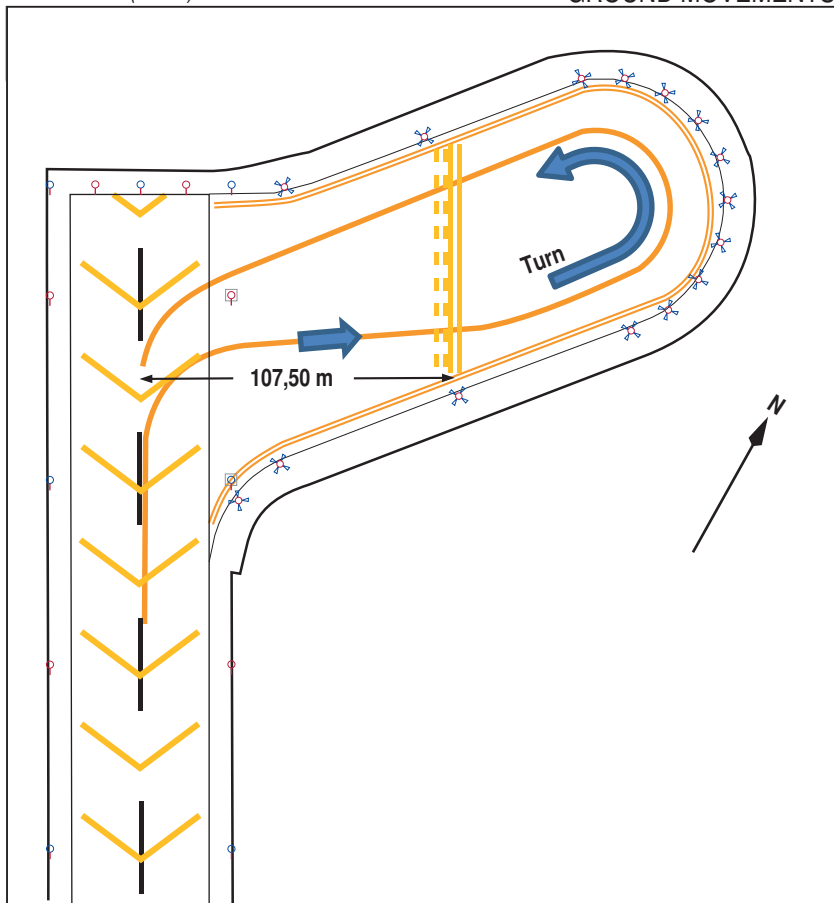
- RWY 15 : RWY : HI, THR : green HI, RWY end : red HI, APCH lights 900 m : white HI. Distance markers every 300 m (right side).
- RWY 33 : RWY : HI, THR : green, RWY end : red HI, SWY north 1208 x 53 m : red HI. Distance markers every 300 m (left side).
- TWY : All TWY : blue except A1/B1 (reflectors) end D1/E1 (NIL), north turnaround pad : blue.

REFUELING

- F34 - F35 - Oxygen (ensured during working HOR)
- ATS SKED
- MON: 0715/1600, TUE - THU: 0700/1600, FRI: 0700/1400
- Out of HOR and SAT, SUN, HOL : O/R depends on airbase alert status.
- PPR : LFMIZPZX or Ft DIR : 04.42.56.13.49 or e-mail at ba125.dv.fct@intra.def.gouv.fr

DIRCAM





On ATC instruction, enter the loop and hold short of «holding point LOOP» :

Maximum 4 combat ACFT (fighters) or 1 heavy ACFT.

- Available as a holding point by A330/A340/A400/C17/C135/E3 (RWY is considered as vacated when ACFT is holding short).

- **Not available as a holding point by A124/A350/A380 or any other ACFT code letter D/E/F not listed above (ACFT on loop means RWY engaged)**

At night, the loop side is lit (with blue lights).

No sign indicating the holding point, use taxi or landing lights to stop before the holding line.

VISUAL ARR & DEP

ALT AD : 82 (3 hPa)

31 DEC 2020

02 ISTRES LE TUBE LFMI

JET RWY 15

APP : Rhône CTL 119.475 - 280.625

ISTRES APP : 131.000 - 373.225

TWR : ISTRES TWR 123.600 - 377.600

GND : 121.850 - 397.050

AD FAF restricted use

3.3 Km NNW from ISTRES

TEL : 04.42.41.81.41

VAR

2°E

(20)



JET RWY 15

CHG : VAR

02 ISTRES LE TUBE LFMI

VISUAL ARR & DEP

ALT AD : 82 (3 hPa)

31 DEC 2020

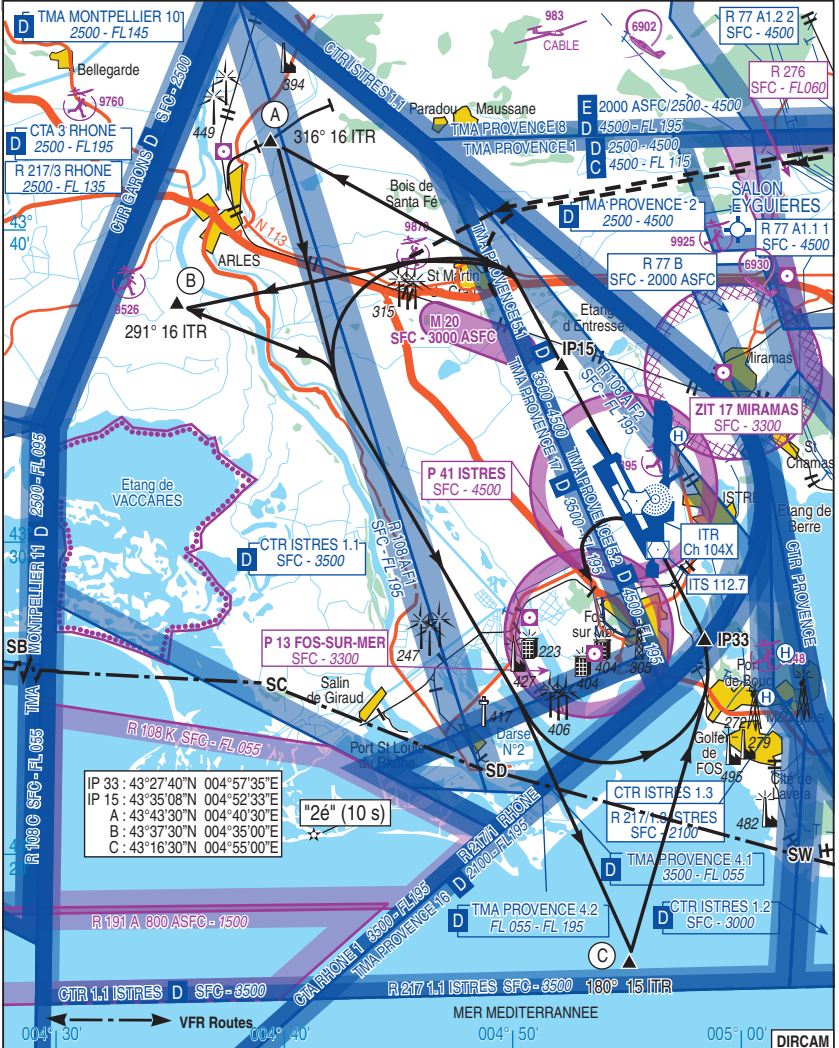
03 ISTRES LE TUBE LFM1

JET RWY 33

APP : Rhône CTL 119.475 - 280.625
ISTRES APP : 131.000 - 373.225
TWR : ISTRES TWR 123.600 - 377.600
GND : 121.850 - 397.050

AD FAF restricted use
3.3 Km NNW from ISTRES
TEL : 04.42.41.81.41

VAR
2°E
(20)



JET RWY 33

CHG : VAR

03 ISTRES LE TUBE LFM1

THR, PRKG and TWY INFORMATIONS

PRKG A (ZTO) : access limited to ACFT code letter C and C135.

TWY A1, C3, D : limited to ACFT code letter C.

TWY B1 : limited to ACFT code letter B.

TWY C, E : ACFT code letter D/E/F on ATC clearance.

TWY C4 : limited to ACFT code letter E.

TWY D1 : limited to ACFT code letter A.

TWY F : not available for LVP DEP RWY 15.

TWY L, M, N : limited to FR MIL ACFT code letter A.

THR : 180 m concrete - ACFT code letter D/E/F : U-turn on RWY approved only on concrete THR.

Taxi with caution on PRKG B, F, I, J, K, L, M, VT and TWY C1, C3, C4 invisible from TWR.

VISUAL ARR & DEP INSTRUCTIONS

Airspace restriction : Refer to AIP FRANCE or French Defense 1/1.000.000 aeronautical chart.

ARRIVAL : Due to CER activity, Radio contact is mandatory with ISTRES APP at least 30 NM from AD, IAS 350 kts. Conform to clearance.

ARRIVAL North and East : "A" Pt (West FONTVIEILLE / 2.5km) at 2000 ft QFE on APP clearance :

RWY 15 : Fly to IP at 2000 ft QFE to IP tracking North of M20 area and SAINT MARTIN de CRAU city following track defined to IP (ref visual APCH chart).

RWY 33 : Fly to IP at 2000 ft QFE and follow track through FOS/MER and PORT ST LOUIS (DARSE n°2) complex then when reaching coast line turn left over the sea and fly between mid-distance PORT de BOUC and FOS/MER built up areas, it is imperative not to fly over LAVERA and FOS/MER factories complex. (ref visual APCH chart).

ARRIVAL West : "B" Pt (North VACCARES POND / 5km) at 2000 ft QFE on APP clearance.

RWY 15: Fly on to IP at 2000 ft QFE tracking North of M20 area and SAINT MARTIN de CRAU city following track defined to IP (ref visual APCH chart).

RWY 33: Fly on to IP at 2000 ft QFE flying a track which connect to N ARR QFU 33 (Ref Visual APCH chart).

ARRIVAL South : Fly "C" Pt (South of FOS GULF) at 2000 ft QFE on APP Clearance.

Avoid to interfere with maritime areas D 142 - D 143 (SL to 3000 ft AMSL), TMA MARSEILLE PROVENCE, R191A if active and avoid sector named "C" between east of R108C and FARAMAN and BEAUDUC lighthouses, with CER activity between SFC and 5000 ft AMSL.

RWY 15: Fly to IP and maintain track mid-distance between PORT ST LOUIS du RHONE and FOS/MER complex (DARSE n°2) tracking North of M20 area and SAINT MARTIN de CRAU city following track defined to IP (ref visual APCH chart).

RWY 33 : Fly to IP and maintain track mid distance between PORT de BOUC and FOS/MER built up areas (Ref visual APP chart).

DIRCAM

VISUAL ARR & DEP INSTRUCTIONS (Continuation)

REMARKS

- These tracks limit the aeronautical nuisances compatible with airspaces.
- All tracks are submitted to control agreement.
- Tactical breaks are submitted to flight supervisor agreement (DV).
- RWY 15 right hand circuit.

EAST ARRIVAL :

In case of necessity join direct North AD following this procedure :

- Transit 500 ft AGL tracking MALLEMORT - South of SENAS - South of MAUSSANE LES ALPILLES.
- Contact "SALON APP" for transit in R 77 A1.
- Contact "ISTRES APP" to obtain arrival clearance to IP 15 or IP 33. Only after agreement climb to 2000 ft QFE to IP 15 or IP 33 following track defined to IP (ref visual APCH chart).

DEPARTURE :

Request start clearance to ISTRES - TWR and precise JET exit point :

If R 108 areas are active, conform to clearances.

After TKOF RWY 15 or 33, maintain 1500 ft QFE till JET exit point by following track defined to IP (ref visual APCH chart).

It is imperative to avoid flying over LAVERA and FOS/MER factories complex and have a closed respect of built up areas overflying rules by following noise abatement procedures tracks (ref VISUAL APP chart)

Maintain radio contact with ISTRES APP till exit of CTR (IFF/SIF : A/0300).

When leaving area contact :

W DEP : GARONS TWR Transit between "B" point and VAUVERT at 1500 ft QNH.

E DEP : In case of necessity and after ISTRES agreement : Transit 500 ft AGL on track South of MAUSSANE LES ALPILLES - South of SENAS - MALLEMORT following track defined to IP (ref visual APCH chart) and contact SALON APP.

S and N DEP : INFO CCT.

REMARKS :

- This tracks limit the aeronautical nuisances compatible with airspaces.
- All tracks are submitted to control agreement.

RESTRICTIONS :

Flying over powder factory of BAUSSENQ (zone M 20) FORBIDDEN below 3000 ft ASFC.

Except emergency, flying over FOS/MER and LAVERA factories and harbour complex is forbidden below 1500 ft/AGL.

Overflying ZTO and south area FORBIDDEN below 1000 ft QFE (flip 01).

NATIONAL FRA

06 ISTRES LE TUBE LFMI

ALT AD : 82 (3 hPa)

31 DEC 2020

HMG

APP : Rhône CTL 119.475 - 280.625

ISTRES APP : 131.000 - 373.225

VAR

TWR : ISTRES TWR 123.600 - 377.600

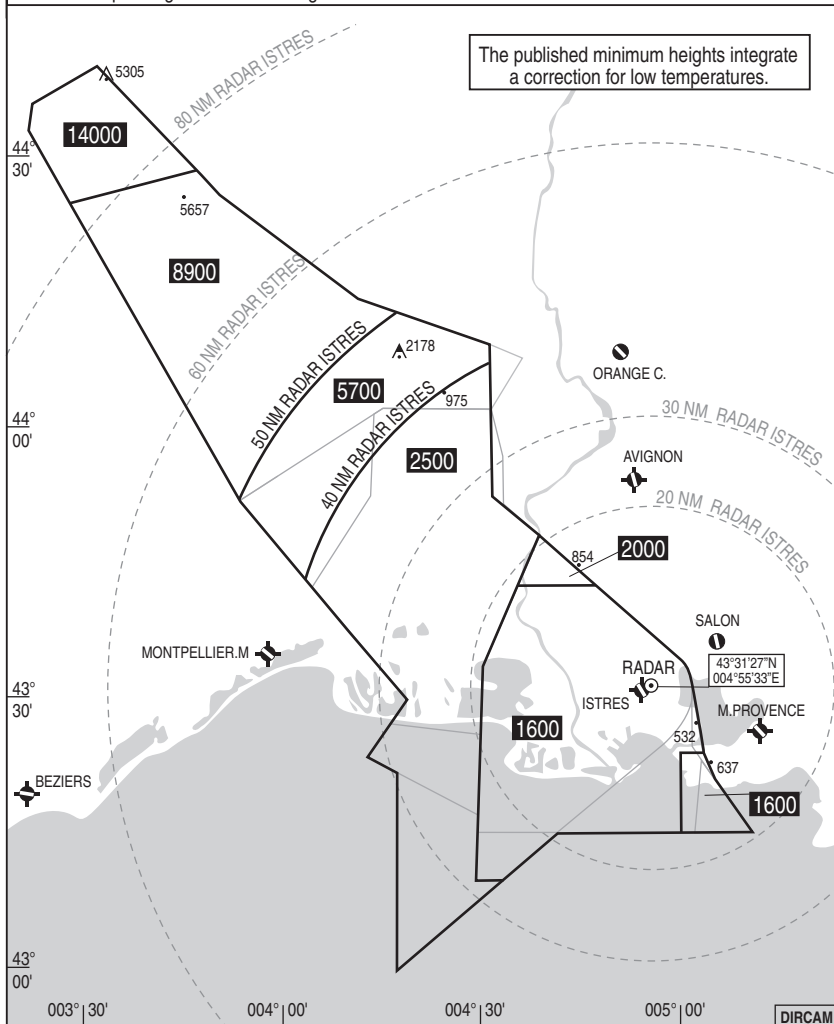
2°E

GND : 121.850 - 397.050

(20)

COMMUNICATION FAILURE : Apply french national regulation.

HMG corresponding to normal working of ISTRES surveillance means.



HMG

CHG : VAR

06 ISTRES LE TUBE LFMI

DIRCAM

NATIONAL FRA INSTRUMENT APPROACH

ALT AD : 82 THR : 77

31 DEC 2020

07 ISTRES LE TUBE LFMI
SRE / ILS (DME) RWY 15

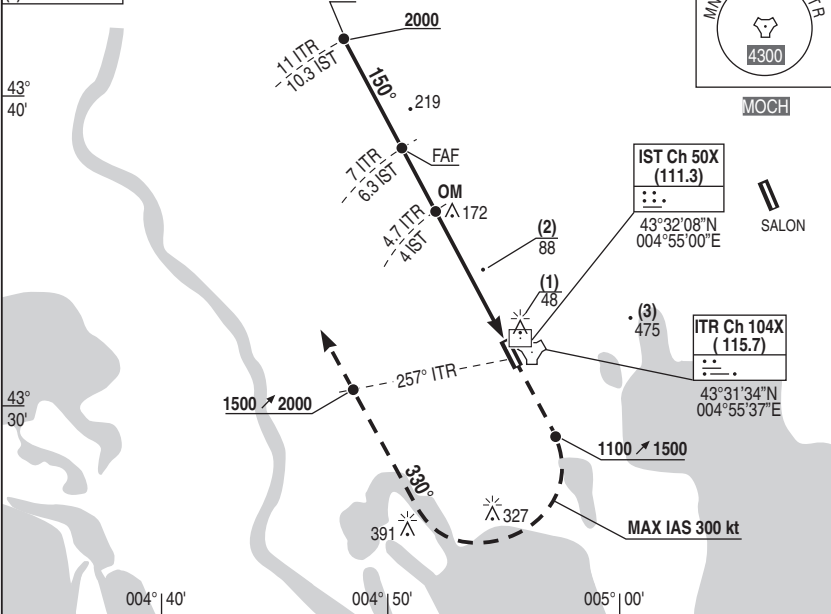
APP : Rhône CTL 119.475 - 280.625
ISTRES APP : 131.000 - 373.225
TWR : ISTRES TWR 123.600 - 377.600 GND : 121.850 - 397.050

ILS : IST 111.3

RDH : 56

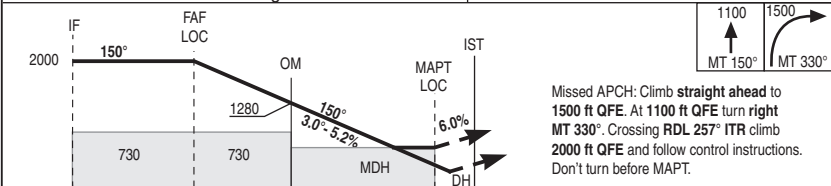
VAR
2°E (20)

- (1) OCH ILS
- (2) OCH LOC
- (3) OCH CIRCLING



ILS True heading : 152.37°

REF HGT : ALT THR in ft



Missed APCH: Climb straight ahead to 1500 ft QFE. At 1100 ft QFE turn right MT 330°. Crossing RDL 257° ITR climb 2000 ft QFE and follow control instructions. Don't turn before MAPT.

10.1	6.1	3.8	0.5	→ THR (NM)
10.3	6.3	4	0.7	→ DME (ATT)
11	7	4.7	1.4	→ TAC (NM)

CAT	ILS			LOC			CIRCLING			LOC					
	DH	RVR (1)	OCH	MDH	RVR	OCH	MDH	VIS	OCH	DME (ATT) IST					
A	200	800	147	340	1100	334	770	1600	770	NM	6	5	4	3	2
B								1600		HGT	1890	1580	1260	950	630
C								2400							
D								3600							

Remarks : (1) Increased minimums. VSS verified.

DIRCAM

SRE / ILS (DME) RWY 15

CHG : VAR

07 ISTRES LE TUBE LFMI

NATIONAL FRA INSTRUMENT APPROACH

ALT AD : 82 THR : 77

31 DEC 2020

08 ISTRES LE TUBE LFMI
HPMA SRE / PAR RWY 15

APP : Rhône CTL 119.475 - 280.625
ISTRES APP : 131.000 - 373.225
TWR : ISTRES TWR 123.600 - 377.600 GND : 121.850 - 397.050

PAR RDH : 56 VAR 2°E (20)

(1) OCH PAR
(2) OCH CIRCLING

43°
40'

43°
30'

004° 40'

004° 50'

005° 00'

005° 10'



SALON

MOCH

ITR Ch 104X
(115.7)

43°31'34"N
004°55'37"E

(1)
48

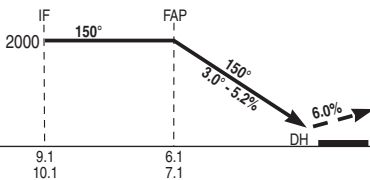
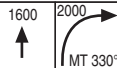
(2)
475

1600 / 2000

330°

9.1THR
10.1 SRE
6.1THR
7.1SRE
150°

REF HGT : ALT THR in ft



Missed APCH : Climb RWY axis to 2000 ft QFE.
At 1600 ft QFE turn right MT 330° and follow clearance.

→ THR (NM)
→ SRE (NM)

CAT	PAR			CIRCLING		
	DH	RVR (1)	OCH	MDH	VIS	OCH
A	200	800	147	770	1600	770
B					1600	
C					2400	
D					3600	

Remarks : (1) RVR increased.

DIRCAM

HPMA SRE / PAR RWY 15

CHG : VAR

08 ISTRES LE TUBE LFMI

NATIONAL FRA INSTRUMENT APPROACH

09 ISTRES LE TUBE LFMI TACAN RWY 15

ALT AD : 82 THR : 77

31 DEC 2020

APP : Rhône CTL 119.475 - 280.625

ISTRES APP : 131.000 - 373.225

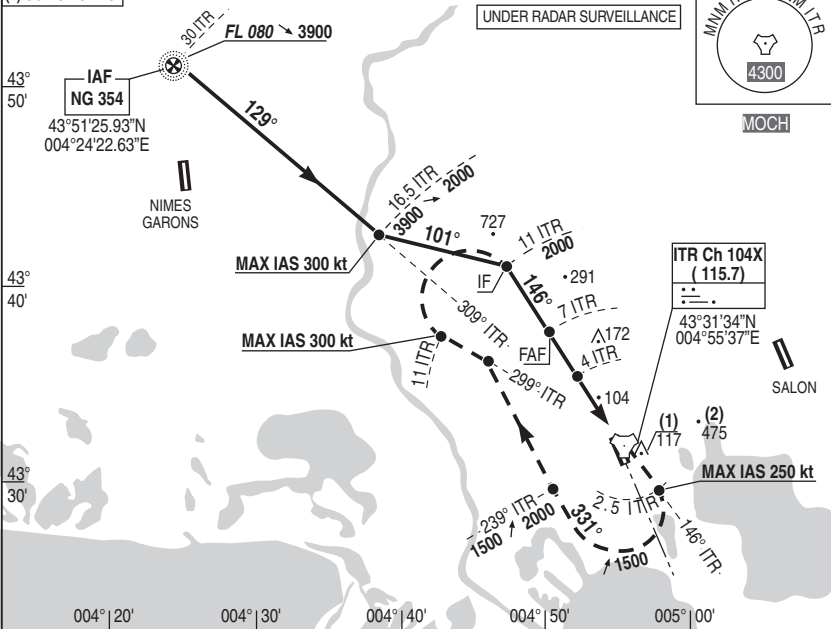
PAR
RDH : 56

VAR
2°E (20)

TWR : ISTRES TWR 123.600 - 377.600

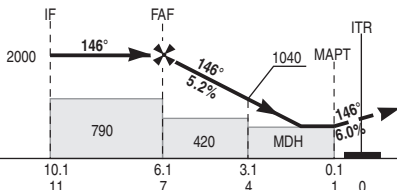
GND : 121.850 - 397.050

- (1) OCH TACAN
- (2) OCH CIRCLING



REF HGT : ALT THR in ft

APCH not in RWY axis



Missed APCH: Climb RDL 146° ITR up to 1500 ft QFE.
At 2.5 ITR turn right MT 331° to intercept and follow RDL 299° ITR. Crossing RDL 239° ITR climb up to 2000 ft QFE. At 11 NM ITR turn right for a new presentation.

→ THR (NM)
→ TAC (NM)

CAT	TACAN			CIRCLING			TACAN	NM	6	5	4	3	2
	MDH	RVR	OCH	MDH	VIS	OCH							
A	370	1300	364	770	1600	770	6	5	4	3	2		
B					1600		1350						
C					2400		1040						
D					3600		720	400					

Remarks : VSS checked.

DIRCAM

NATIONAL FRA INSTRUMENT APPROACH

ALT AD : 82 THR : 77

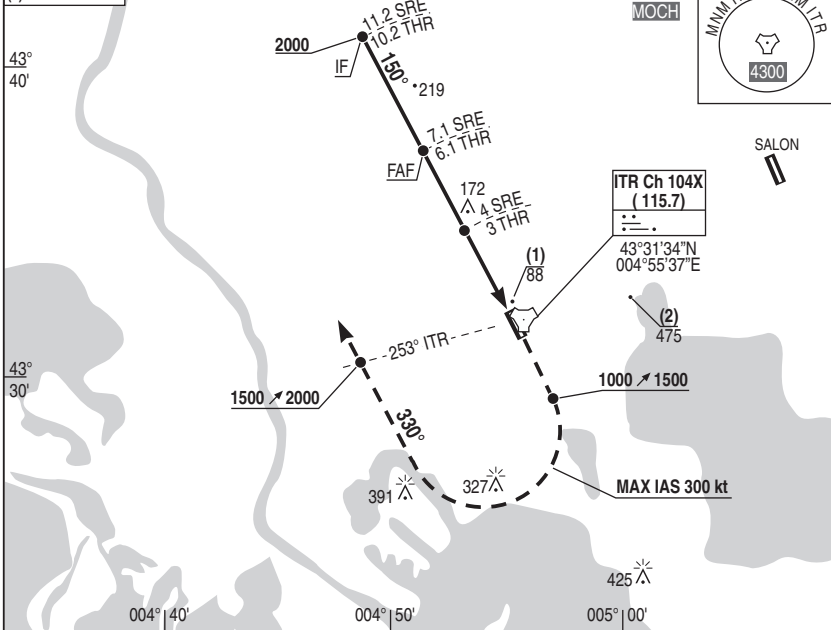
31 DEC 2020

10 ISTRES LE TUBE LFMI SRE RWY 15

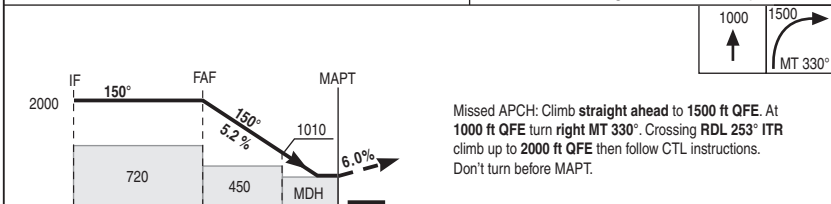
APP : Rhône CTL 119.475 - 280.625 ISTRES APP : 131.000 - 373.225
TWR : ISTRES TWR 123.600 - 377.600 GND : 121.850 - 397.050

VAR
2°E (20)

(1) OCH SRE
(2) OCH CIRCLING



REF HGT : ALT THR in ft



11.2 7.1 4 1.9
10.2 6.1 3 0.9

CAT	SRE			CIRCLING			SRE NM	7	6	5	4	3	2
	MDH	RVR	OCH	MDH	VIS	OCH							
A	340	1100	334	770	1600	770	1960	1640	1320	1010	690	380	
B					1600								
C					2400								
D					3600								

Remarks : VSS checked.

DIRCAM

SRE RWY 15

CHG : VAR

10 ISTRES LE TUBE LFMI

NATIONAL FRA INSTRUMENT APPROACH

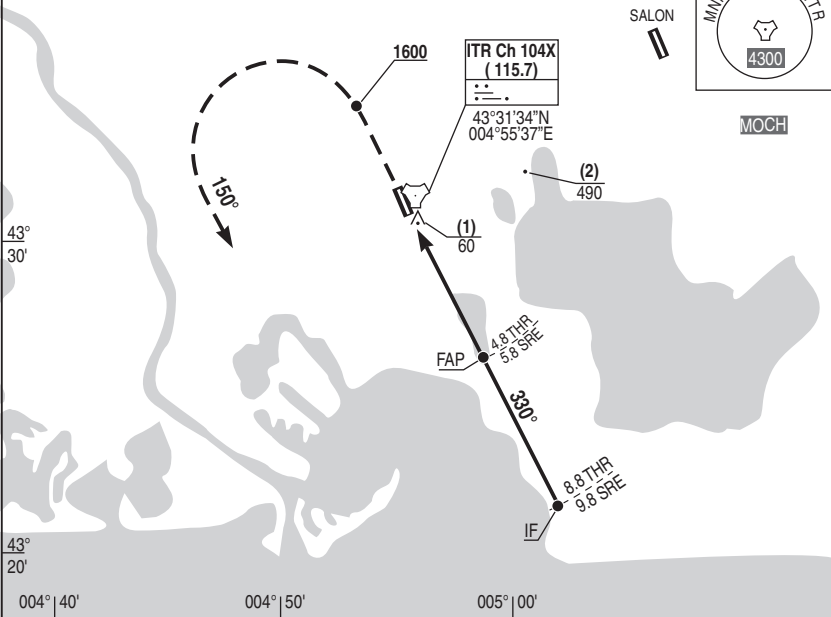
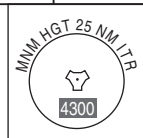
ALT AD : 82 THR : 62

31 DEC 2020

11 ISTRES LE TUBE LFMI HPMA SRE / PAR RWY 33

APP : Rhône CTL 119.475 - 280.625	ISTRES APP : 131.000 - 373.225	VAR 2°E (20)
TWR : ISTRES TWR 123.600 - 377.600	GND : 121.850 - 397.050	

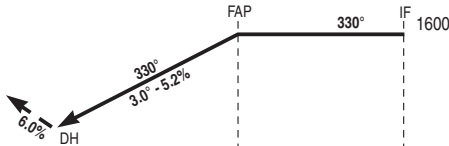
- (1) OCH PAR
- (2) OCH CIRCLING



REF HGT : ALT THR in ft



Missed APCH : Climb RWY axis to 1600 ft QFE, then turn left MT 150° and follow clearance.



THR ← (NM)		4.8	8.8
SRE ← (NM)		5.8	9.8

CAT	PAR			CIRCLING		
	DH	RVR	OCH	MDH	VIS	OCH
A	200	1200	158	790	1600	785
B					1600	
C					2400	
D					3600	

Remarks : DIRCAM

HPMA SRE / PAR RWY 33

CHG : VAR

11 ISTRES LE TUBE LFMI

NATIONAL FRA INSTRUMENT APPROACH

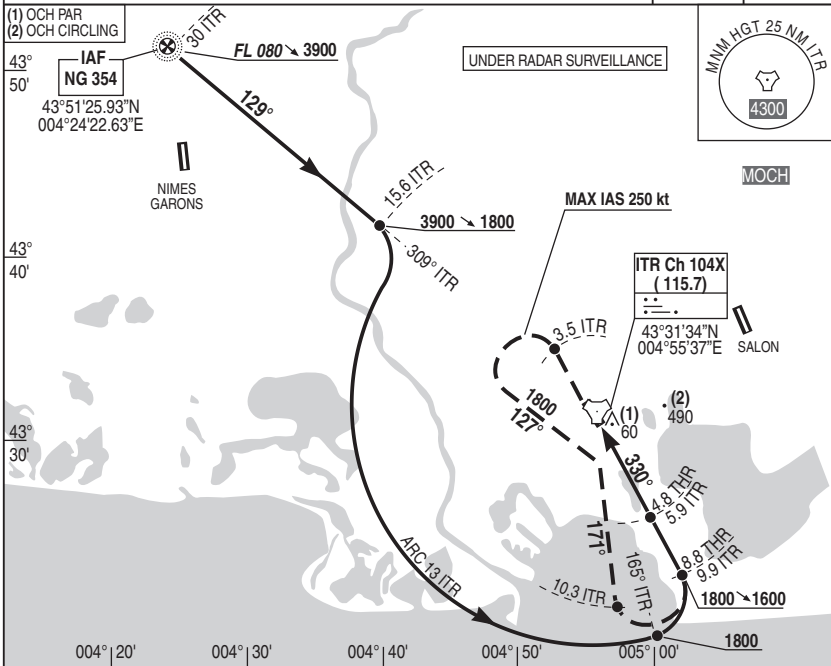
ALT AD : 82 THR : 62

31 DEC 2020

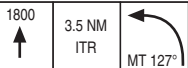
12 ISTRES LE TUBE LFMI HPMA TACAN / PAR RWY 33

APP : Rhône CTL 119.475 - 280.625 ISTRES APP : 131.000 - 373.225
TWR : ISTRES TWR 123.600 - 377.600 GND : 121.850 - 397.050

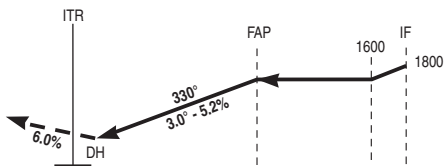
PAR **VAR**
RDH : 56 **2°E (20)**



REF HGT : ALT THR in ft



Missed APCH : Climb RWY axis to 1800 ft QFE.
At 3.5 ITR turn left MT 127° to intercept and follow RDL 171° ITR (MT 171°).
At 10.3 ITR turn left for a new presentation.



THR ← (NM)
TAC ← (NM)

CAT	PAR			CIRCLING		
	DH	RVR	OCH	MDH	VIS	OCH
A	200	1200	158	790	1600	785
B					1600	
C					2400	
D					3600	

Remarks :

DIRCAM

HPMA TACAN / PAR RWY 33

CHG : VAR

12 ISTRES LE TUBE LFMI

NATIONAL FRA INSTRUMENT APPROACH

13 ISTRES LE TUBE LFMI TACAN RWY 33

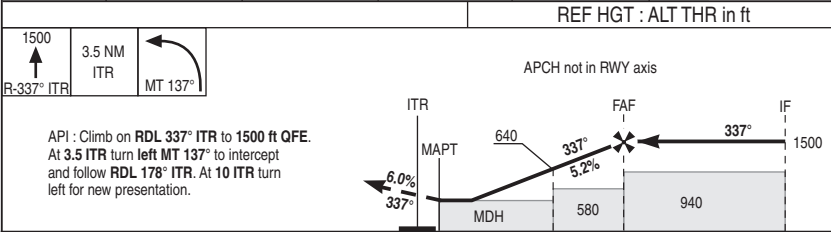
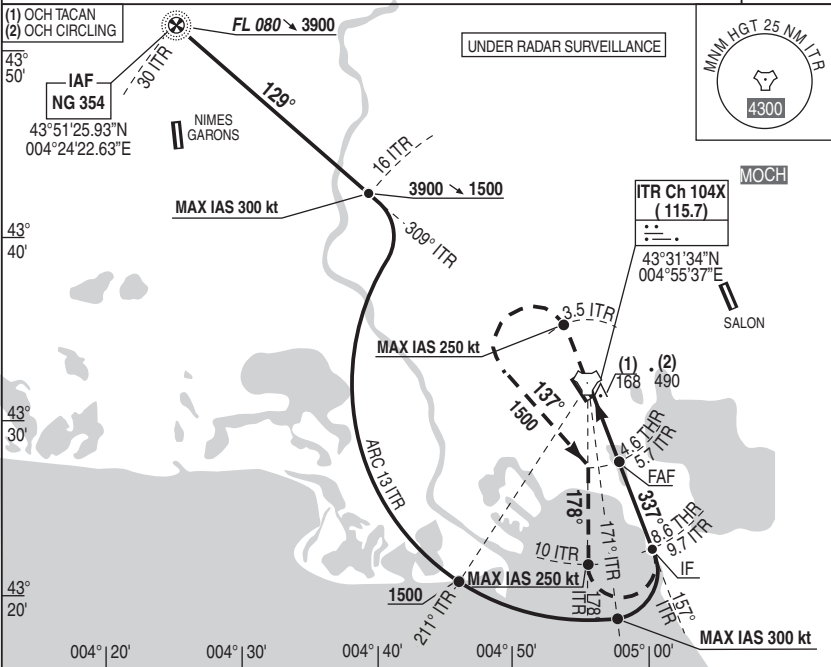
ALT AD : 82 THR : 62

31 DEC 2020

APP : Rhône CTL 119.475 - 280.625 ISTRES APP : 131.000 - 373.225

VAR
2°E (20)

TWR : ISTRES TWR 123.600 - 377.600 GND : 121.850 - 397.050



THR ← (NM)	0.1	1.9	4.6	8.6
TAC ← (NM)	1.2	3	5.7	9.7

CAT	TACAN			CIRCLING			TACAN NM HGT	5	4	3
	MDH (1)	RVR	OCH	MDH	VIS	OCH				
A	420	1900			1900		1280	960	640	
B	420	1900	414	790	1900	785				
C	420	1900			2400					
D	430	2000			3600					

Remarks : (1) Increased minimums. VSS checked. DIRCAM

NATIONAL FRA INSTRUMENT APPROACH

14 ISTRES LE TUBE LFMI SRE RWY 33

ALT AD : 82 THR : 62

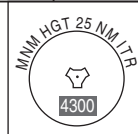
31 DEC 2020

APP : Rhône CTL 119.475 - 280.625 ISTRES APP : 131.000 - 373.225

TWR : ISTRES TWR 123.600 - 377.600 GND : 121.850 - 397.050

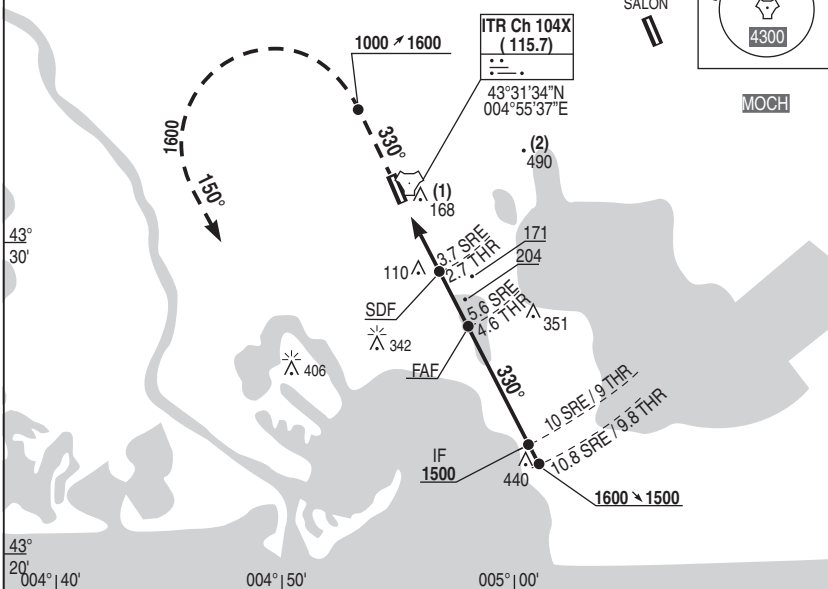
VAR
2°E (20)

(1) OCH SRE
(2) OCH CIRCLING

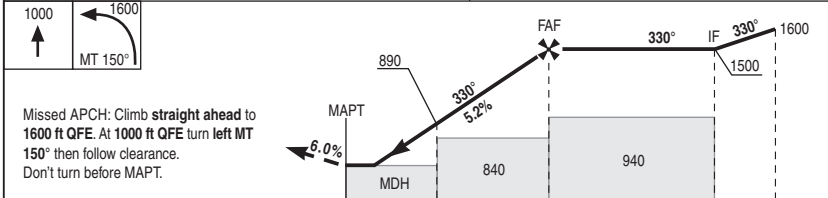


SALON

MOCH



REF HGT : ALT THR in ft



SRE ← (NM)	2	3.7	5.6	10	10.8
TAC ← (NM)	1	2.7	4.6	9	9.8

CAT	SRE			CIRCLING			SRE		
	MDH	RVR	OGH	MDH	VIS	OGH	NM	HGT	
A		1900			1600		5	4	3
B	420	1900	414	790	1600	785	1310	990	670
C		1900			2400				
D		2000			3600				

Remarks : VSS checked. DIRCAM

SRE RWY 33 CHG : VAR 14 ISTRES LE TUBE LFMI