

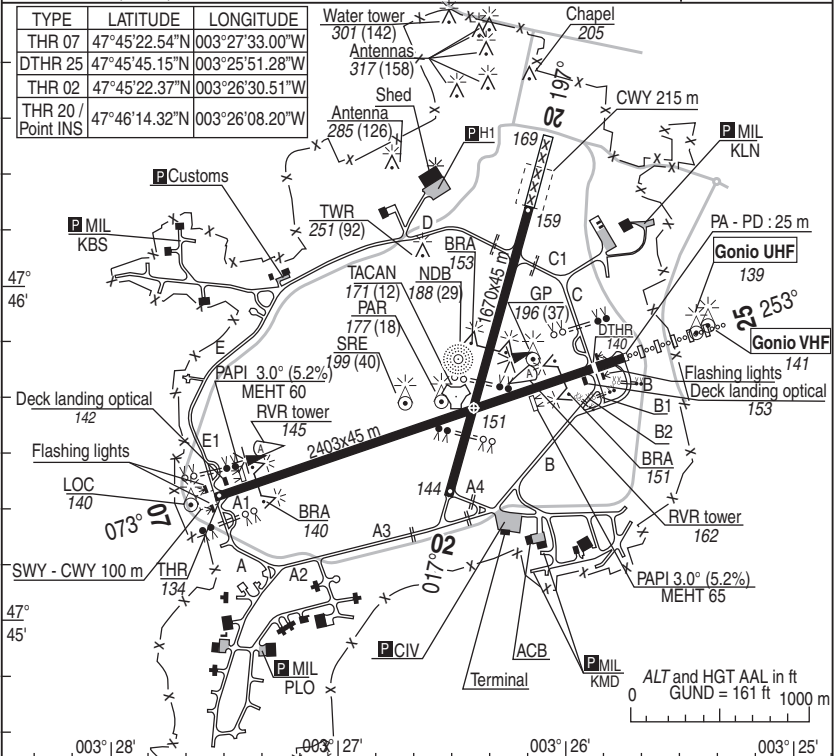
NATIONAL FRA AERODROME CHART

14 JUL 2022

01 LORIENT LANN BIHOUE LFRH

ALT AD : 159 (6 hPa)

VAR : 1°W (20)



RWY	LIGHTING		DECLARED DISTANCES				Surface	Strength	MINIMUMS TKOF (RVR in m)*			
	APPROACH	RWY	TORA	TODA	ASDA	LDA			CAT A	CAT B	CAT C	CAT D
07	NIL	LIH / LIL	2403	2428	2428	2403	Paved	400	400	400	400	
25	LIH 900m	LIH / LIL	2403	2503	2503	2230	44 R/C/W/T	400	400	400	400	
02	NIL	LIL	1670	1885	1670	1670	Paved	400	400	400	400	
20	NIL	LIL	1670	1670	1670	1670	11 R/B/W/T	400	400	400	400	

MARKINGS - LIGHTINGS

- Day : lighting: HI/BI line APP RWY25 - HI RWY07/25 - BI RWY02/20 - Flashing lights RWY07 AST.
- PAPI (3°) RWY07/25 370 m from THR.
- A - A1 - A2 - A3 - B - B1 - B2 centre line lighting marking and lateral back reflecting.
- C - C1 - D - E - E1 edge lighting marking only.

* OPERATIONAL MISSION

	ABC	D
07	250	300
25	250	300

DIRCAM

DV (Flight Director) : 02 97 12 90 25 - 862 772 90 25

OTHER INFORMATIONS

- BRA 07/25 & 02/20.
- Presence of "NO ENTRY" panels for vehicule on TWY.
- Textile brakes, height 9cm, 114m from THR 07 and 8m before DTHR 25.
- Deck landing opticals, 27.5m from left side of RWY in use (height : 10ft ASFC).

REFUELING

- F34 - Gas oxygen (LOX on request - PN 72H).

ATS HOR

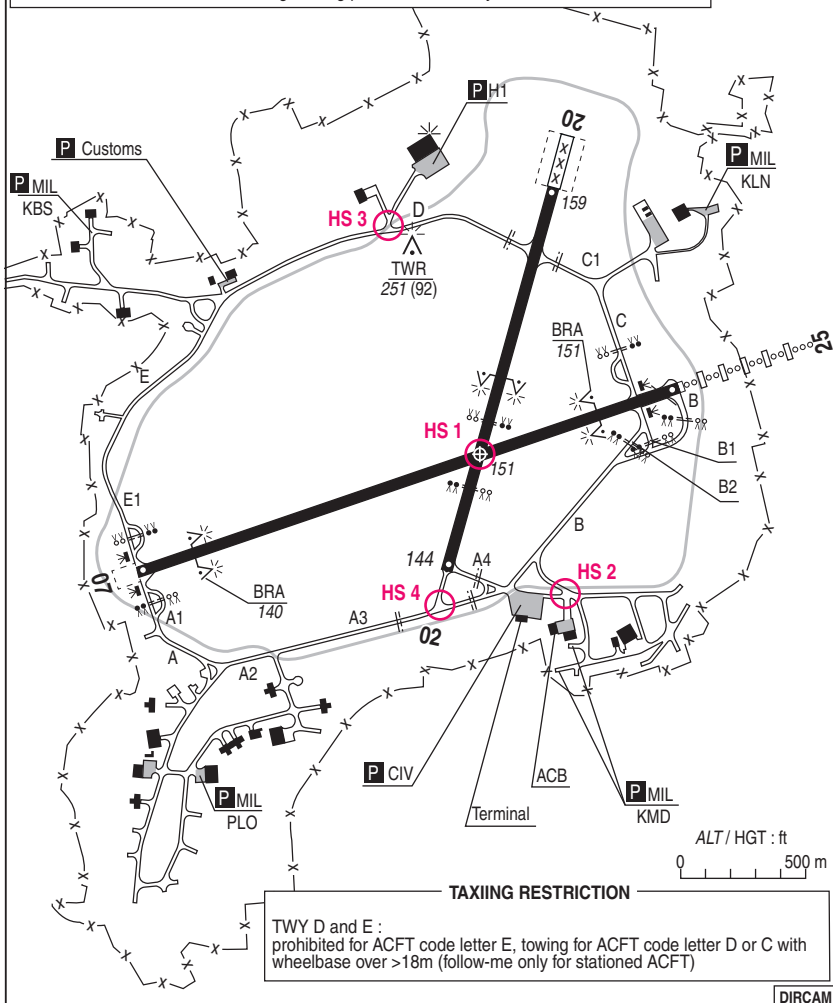
- Mon/Fri (outside HOL) : 0700/1600 on PPR (SUMMER -1H). Possible extension.
- ATIS : 129.125

DIRCAM

CAUTION

○ HS : Hot spot

- HS 1 :** At RWY crossroads, maintaining holding points is mandatory.
- HS 2 :** At the CIV ACB and MIL PRKG exit, road signs for vehicles only.
- HS 3 :** Intersection between TWY and ring road. Be careful and request red crossroads traffic lights to stop any vehicles.
- HS 4 :** To cross THR 02, maintaining holding points is mandatory.



TAXIING RESTRICTION

TWY D and E :
prohibited for ACFT code letter E, towing for ACFT code letter D or C with
wheelbase over >18m (follow-me only for stationed ACFT)

DIRCAM

VISUAL ARR & DEP

ALT AD : 159 (6 hPa)

14 JUL 2022

02 LORIENT LANN BIHOUE LFRH

JET RWY02 & 07 & 20 & 25

APP : 123.000 - 231.875 - 362.300

TWR : 122.700 - 281.550

GND : 119.700 - 387.600

ATIS : 129.125

AD FNF restricted use

5 Km WNW from LORIENT

TEL : 02.97.12.90.25

VAR

1°W

(20)



JET RWY02 & 07 & 20 & 22

CHG : Obst

02 LORIENT LANN BIHOUE LFRH

18 JUN 2020

03 LORIENT LANN BIHOUE LFRH

VISUAL ARR and DEP INSTRUCTIONS**ARRIVAL AND PATTERN CIRCUIT :**

Radio contact mandatory with LORIENT APP, 3 MIN before JET entry points (EP). Fly direct on (IP) on APP clearance.

Fly at 2000 ft QFE (2200 ft QNH) on following « EP » :

Ceiling < 2000 ft QFE : Fly « EP » at 1500 ft QFE on APP clearance.

Fly to « IP » of RWY in use at 2000 ft QFE - VI MAX : 300 kt

Landmarks	RDL/Distance « LOR » Ch 105X	Location
EP - W	296° / 08 NM LOR	MOELAN SUR MER
EP - N	026° / 10 NM LOR	PLOUAY
EP - E	116° / 12 NM LOR	ETEL
EP - S	196° / 07 NM LOR	PEN MEN
IP - 02	197° / 04 NM LOR	3,7 NM THR 02
IP - 07	253° / 04 NM LOR	3,2 NM THR 07
IP - 20	017° / 04 NM LOR	3,4 NM THR 20
IP - 25	073° / 04 NM LOR	3,6 NM THR 25

Descent to 1500 ft QFE, before IP on APP clearance.

Any presentation against QFU in use for RWY 07/25 are to be fly north of AD, and must not interfere with low level holding procedures, height must be coordinated with APP.

FLY RESTRICTIONS :

Flying over LORIENT is forbidden below 5000 ft QNH. Presence of M 46 area and buildings with special markings.

Do not overfly poultry farming located 106° LOR, dead end of CTR, close to a pool, (47°42'51"N – 003°10'24"W)

R13 (SFC-UNL) and R14 (SFC-3000 ft AMSL) located South-East of AD : Pass round is mandatory when active.

Hand over with LORIENT TWR on APP instructions.

For all presentations: call back TWR over « IP ».

Break presentation: 1500 ft QFE. Speed 300 kts. Left hand break.

DEPARTURE**NOISE ABATEMENT:****Controlled OAT:**

QFU 25 : After TKOF, Maintain RWY heading, maximum rate of climb, crossing 5000 ft, resume own navigation.

QFU 07 : After TKOF, turn left heading 068°, maximum rate of climb, crossing 5000 ft, resume own navigation.

VICTOR OAT :

QFU 25 : After TKOF, maintain RWY heading till coast line then own navigation.
East departure, fly south of LORIENT.

North departure, fly north of GUIDEL then north PONT-SCORFF.

QFU 07 : After TKOF, fly heading 067°, Do not turn before 5,5 NM.

South departure, turn RIGHT avoiding flying over LORIENT if R13 not active.

West and south departure, after left turn, transit north PONT-SCORFF then north GUIDEL then own navigation.

In 15 NM radius AD vicinity: MNM height 1000ft / ASFC, speed limit 300 kt, avoid flying over built-up areas.

DIRCAM

NATIONAL FRA
ALT AD : 159 (6 hPa)

18 JUN 2020

04 LORIENT LANN BIHOUE LFRH
HMG

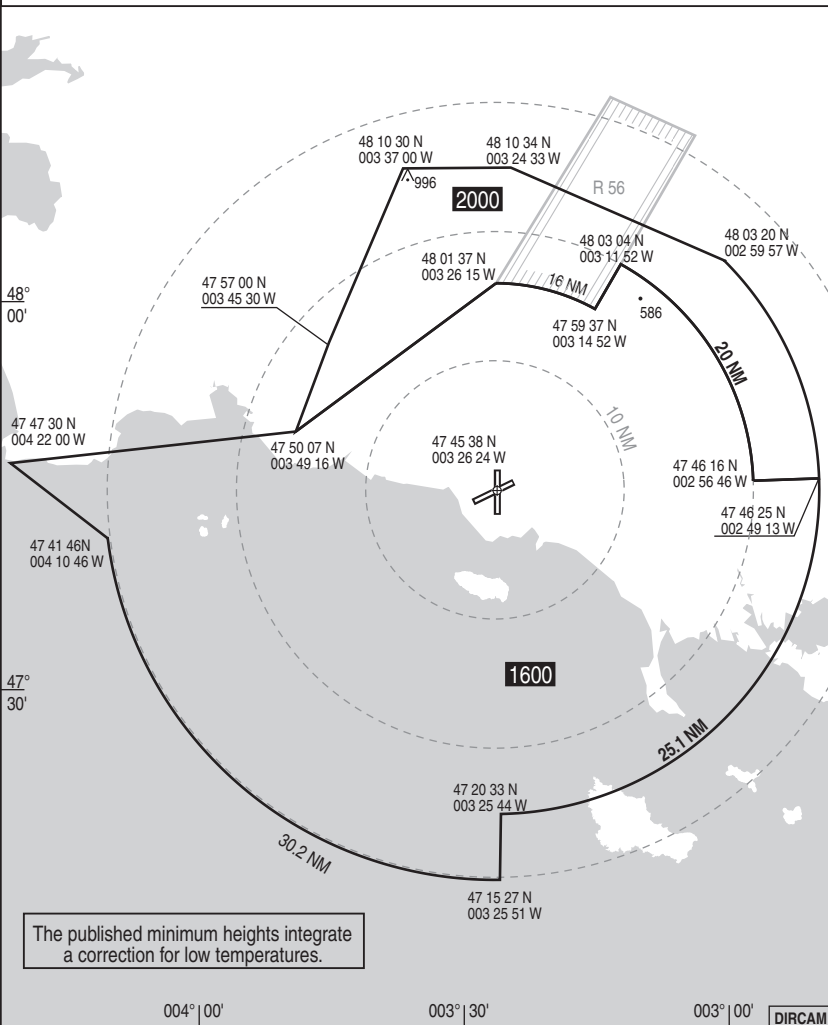
APP : 123.000 - 122.100 - 231.875

TWR : 122.700 - 281.550

ATIS : 129.125

VAR
1°W
(20)

COMMUNICATION FAILURE : Apply french national regulation.



HMG

CHG : VAR.

04 LORIENT LANN BIHOUE LFRH

DIRCAM

NATIONAL FRA INSTRUMENT APPROACH

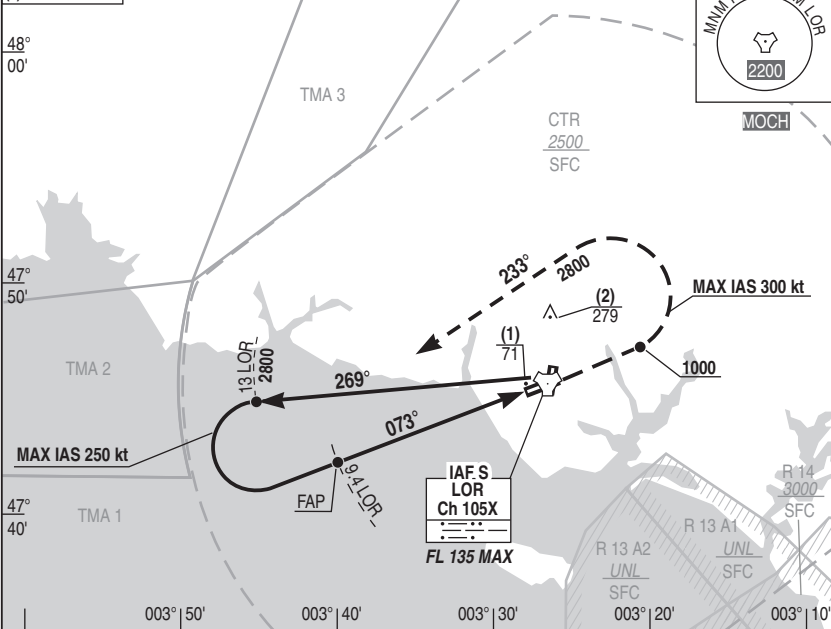
05 LORIENT LANN BIHOUE LFRH TACAN PAR RWY 07

ALT AD : 159 THR : 134

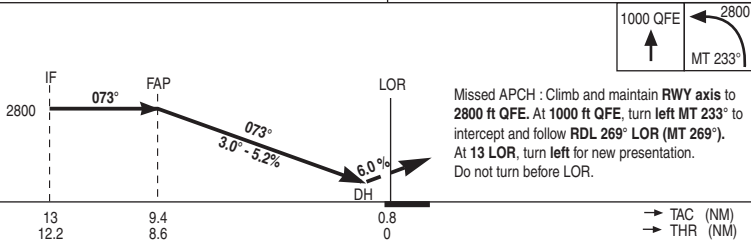
27 JAN 2022

APP : 123.000 - 122.100 - 231.875	PAR : 118.175	SRE : 362.300	RDH : 49	VAR 1°W (20)
TWR : 122.700 - 281.550	ATIS : 129.125			

(1) OCH PAR
(2) OCH CIRCLING



REF HGT : ALT THR in ft



CAT	PAR			CIRCLING		
	DH	RVR	OCH	MDH	VIS	OCH
A	200	1200	169	780	1600	771
B					1600	
C					2400	
D					3600	

Remarks :

DIRCAM

NATIONAL FRA INSTRUMENT APPROACH

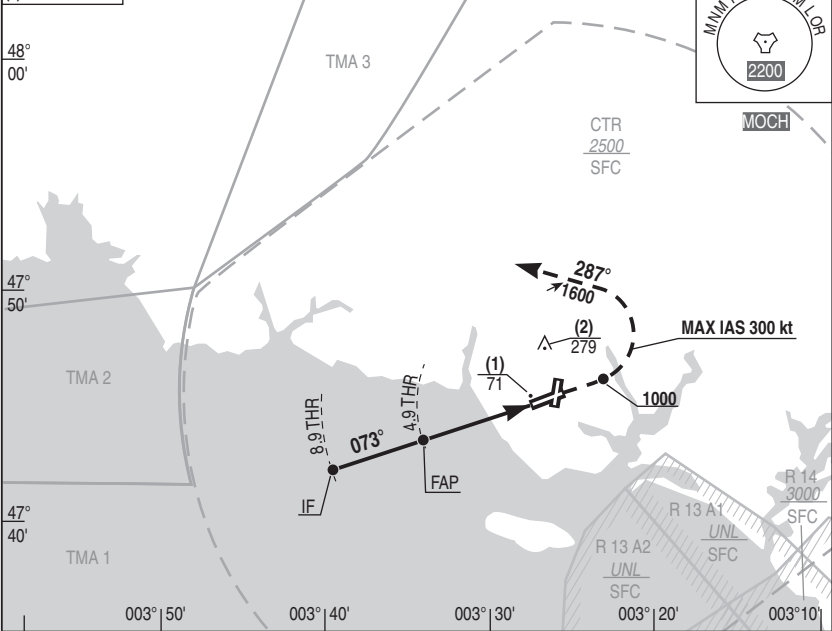
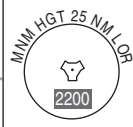
ALT AD : 159 THR : 134

27 JAN 2022

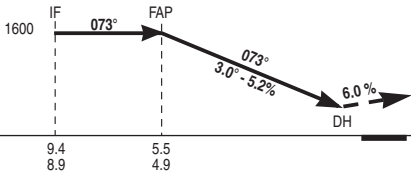
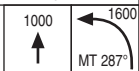
06 LORIENT LANN BIHOUE LFRH
RADAR / PAR RWY 07

APP : 123.000 - 122.100 - 231.875	PAR : 118.175	SRE : 362.300	RDH : 49	VAR 1°W (20)
TWR : 122.700 - 281.550	ATIS : 129.125			

- (1) OCH PAR
- (2) OCH CIRCLING



REF HGT : ALT THR in ft



Missed APCH : Climb and maintain RWY axis to 1600 ft QFE. At 1000 ft QFE, turn left MT 287° and follow ATC instructions.

→ SRE (NM)
→ THR (NM)

CAT	PAR			CIRCLING		
	DH	RVR	OCH	MDH	VIS	OCH
A	200	1200	169	780	1600	771
B					1600	
C					2400	
D					3600	

Remarks : DIRCAM

NATIONAL FRA INSTRUMENT APPROACH

ALT AD : 159 THR : 134

18 JUN 2020

07 LORIENT LANN BIHOUE LFRH TACAN RWY 07

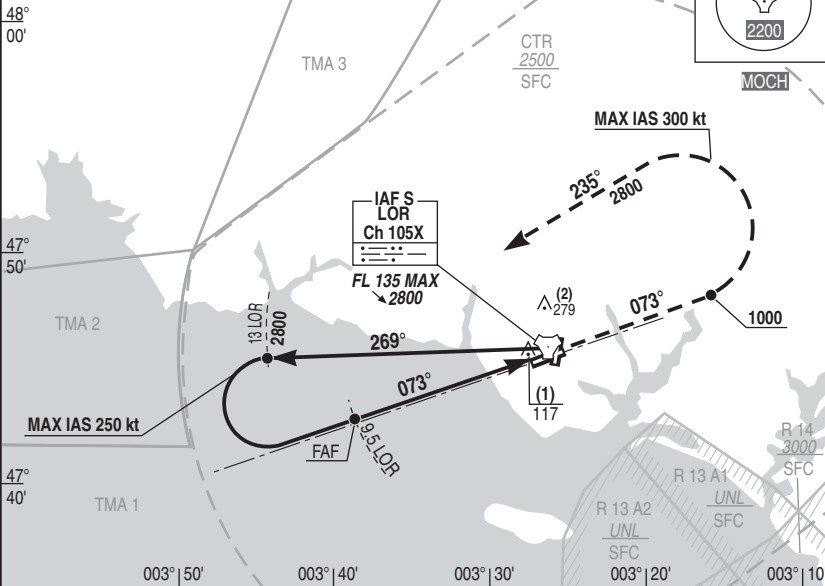
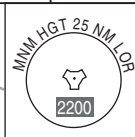
APP : 123.000 - 122.100 - 231.875

VAR
1°W (20)

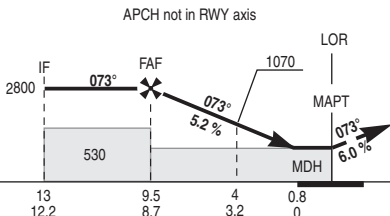
TWR : 122.700 - 281.550

ATIS : 129.125

- (1) OCH TACAN
- (2) OCH CIRCLING

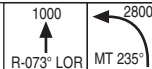


REF HGT : ALT THR in ft



Missed APCH : Climb RDL 073° LOR (MT 073°) to 2800 ft QFE.

At 1000 ft QFE, turn left MT 235° to intercept and follow RDL 269° LOR (MT 269°). At 13 LOR, turn left for new presentation. Do not turn before MAPT.



→ TAC (NM)
→ THR (NM)

CAT	TACAN			CIRCLING			TACAN								
	MDH	RVR	OCH	MDH	VIS	OCH	NM	9	8	7	6	5	4	3	2
A	370	1500	364	780	1600	771	NM	2650	2330	2020	1700	1380	1070	750	440
B		1500			1600		HGT								
C		1700			2400										
D		1700			3600										

Remarks :

DIRCAM

TACAN RWY 07

CHG : VAR.

07 LORIENT LANN BIHOUE LFRH

NATIONAL FRA INSTRUMENT APPROACH

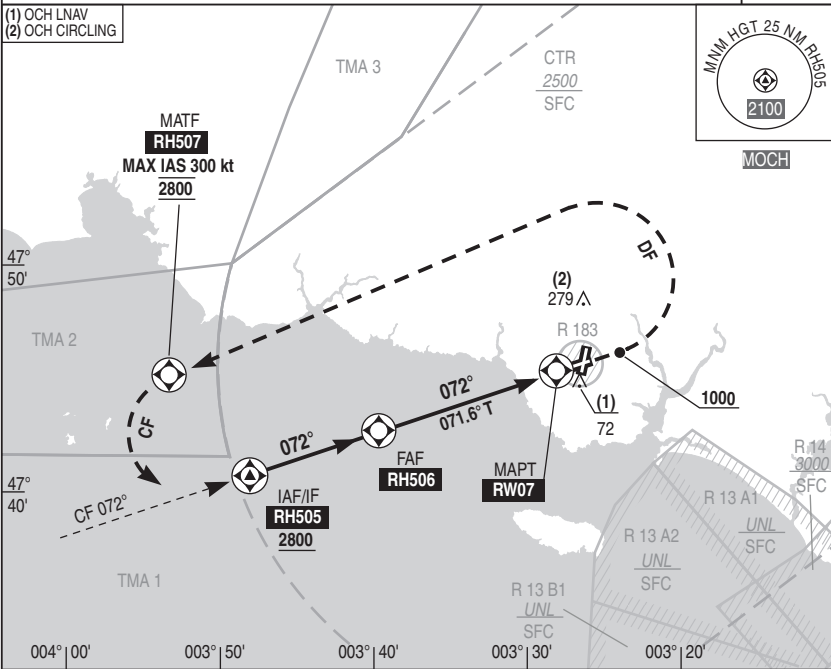
ALT AD : 159 THR : 134

18 JUN 2020

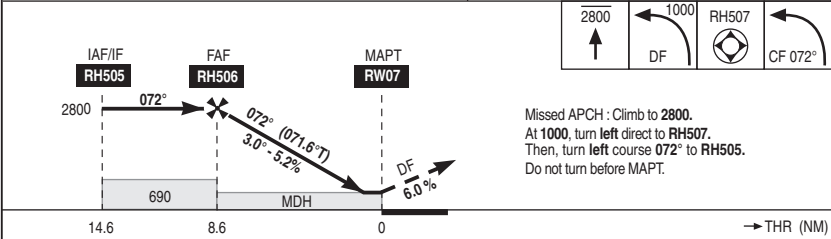
08 LORIENT LANN BIHOUE LFRH

INS GNSS RWY 07

APP : 123.000 - 122.100 - 231.875	PROCEDURE RESTRICTED TO AIRCRAFTS ALLOWED ONLY	VAR 1°W (20)
TWR : 122.700 - 281.550	ATIS : 129.125	



REF HGT : ALT THR in ft



CAT	LNAV			CIRCLING			DIST RW07								
	MDH	RVR	OCH	MDH	VIS	OCH	NM	8	7	6	5	4	3	2	1
A	320	1400	318	580	1600		2600	2280	1960	1650	1330	1010	690	370	
B				580	1600										
C				600	2400	575									
D				700	3600										

Remarks : DIRCAM

INS GNSS RWY 07 CHG : VAR. 08 LORIENT LANN BIHOUE LFRH

TABLE FOR DATA INDICATOR		LFRH INS GNSS RWY07 - MAG VAR					0,7°W (20)			
N° SEQ	CODING	IDENT	COORDINATES	TYPE	DIST (NM)	MAG TRACK (TRUE TRACK)(°)	TURN	MIN HGT or LEVEL (FT)	MAX HGT or LEVEL (FT)	MAX IAS (KT)
10	IF	RH505	47°40'45.7"N 003°48'07.5"W	FO		072 (071.5)		2800		
20	TF	RH506	47°42'39.6"N 003°39'42.0"W	FO	6.0	072 (071.5)		2800	2800	
30	TF	RW07	47°45'22.54"N 003°27'33.00"W	FO	8.6	072 (071.6)				
40	CH					072 (071.7)		1000	1000	300
50	DF	RH507	47°45'03.4"N 003°53'21.9"W	FO			L	2800	2800	300
60	CF	RH505	47°40'45.7"N 003°48'07.5"W	FO		072 (071.5)	L	2800	2800	300

LEGEND : **TF** : Track to a Fix **DF** : Direct to a Fix **CF** : Course to a Fix **CH** : Course to a height **FO** : Fly Over **FB** : Fly By

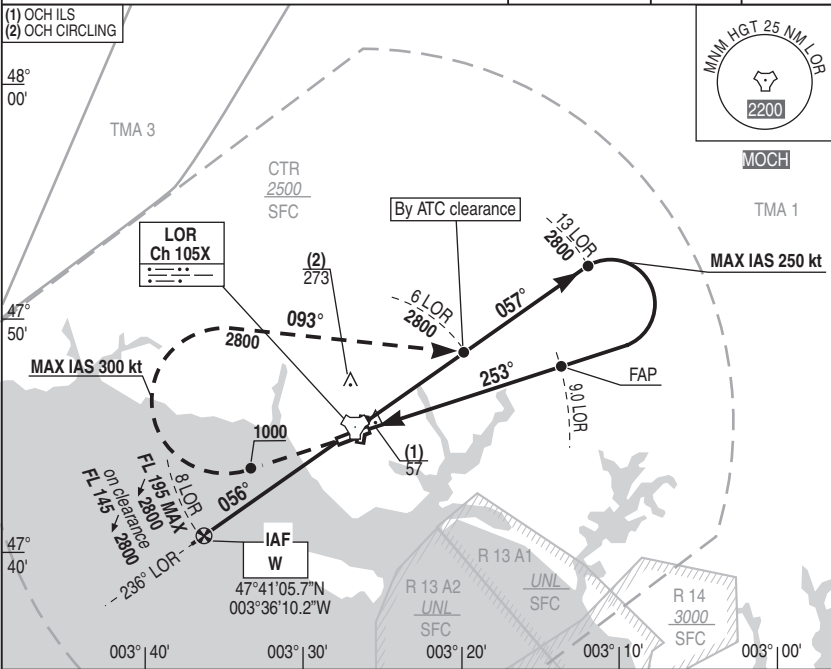
NATIONAL FRA INSTRUMENT APPROACH

ALT AD : 159 DTHR : 140

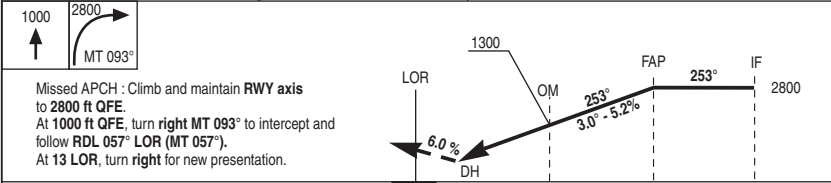
18 JUN 2020

10 LORIENT LANN BIHOUE LFRH TACAN / ILS RWY 25

APP : 123.000 - 122.100 - 231.875	ILS : BH 108.15	RDH : 57	VAR 1°W (20)
TWR : 122.700 - 281.550	ATIS : 129.125		



ILS True Heading : 251.77 REF HGT : ALT DTHR in ft



TAC ← (NM)	0.4	4.3	9.0	13
DTHR ← (NM)	0	3.9	8.6	12.6
BH ← (NM)	0.2	4.1	8.7	12.8

CAT	ILS (1)			CIRCLING		
	DH	RVR	OCH	MDH	VIS	OCH
A	200	800	155	770	1600	765
B					1600	
C					2400	
D					3600	

Remarks : (1) Increased minimum. DIRCAM

TACAN / ILS RWY 25 CHG : VAR. 10 LORIENT LANN BIHOUE LFRH

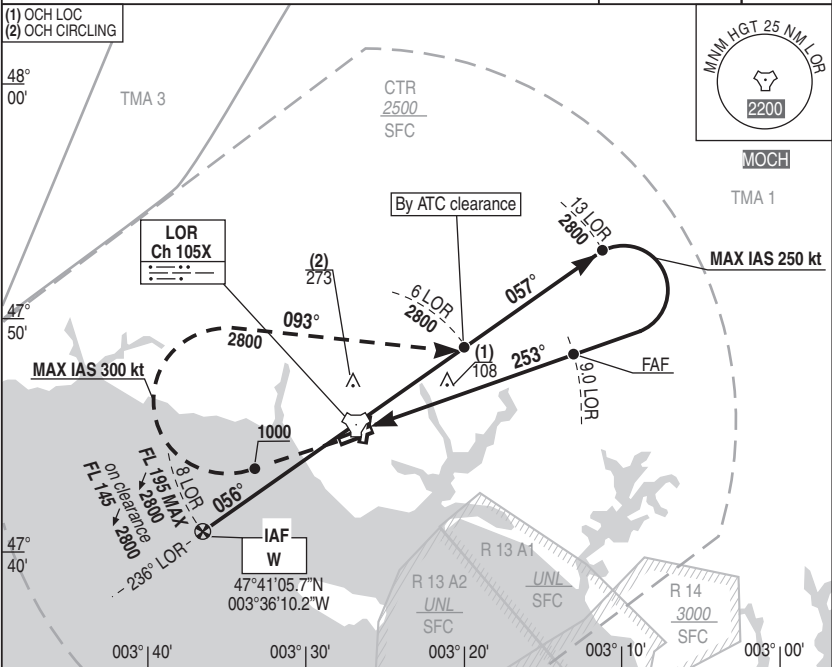
NATIONAL FRA INSTRUMENT APPROACH

ALT AD : 159 DTNR : 140

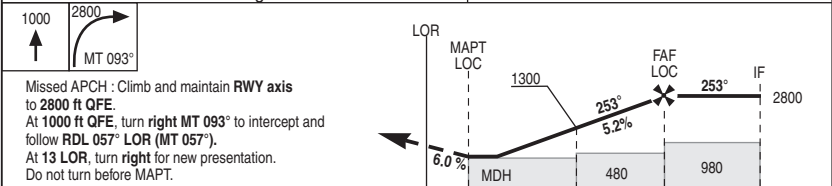
18 JUN 2020

11 LORIENT LANN BIHOUE LFRH TACAN / LOC RWY 25

APP : 123.000 - 122.100 - 231.875	ILS : BH 108.15	VAR 1°W (20)
TWR : 122.700 - 281.550	ATIS : 129.125	



ILS True Heading : 251.77 REF HGT : ALT DTNR in ft



TAC	← (NM)	1	4.3	9.0	13
DTNR	← (NM)	0.6	3.9	8.6	12.6
BH	← (NM)	0.8	4.1	8.8	12.8

CAT	LOC			CIRCLING			DME TACAN							
	MDH	RVR	OCH	MDH	VIS	OCH	NM	8	7	6	5	4	3	2
A					1600			2450	2130	1810	1500	1180	870	550
B	360	900	354	770	1600	765								
C					2400									
D					3600									

Remarks : DIRCAM

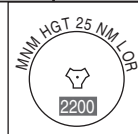
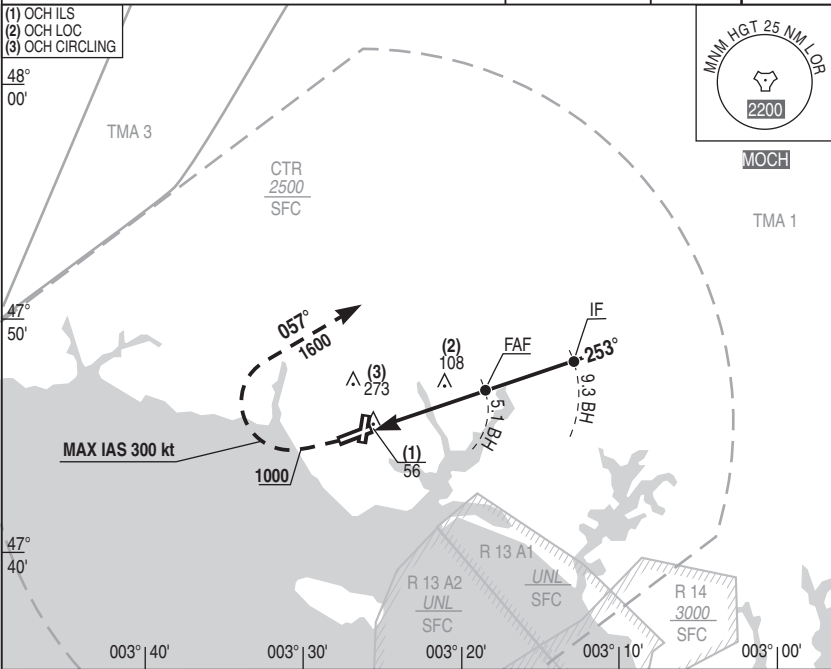
NATIONAL FRA INSTRUMENT APPROACH

12 LORIENT LANN BIHOUE LFRH RADAR ILS RWY 25

ALT AD : 159 DTHR : 140

18 JUN 2020

APP : 123.000 - 122.100 - 231.875	ILS : BH 108.15	RDH : 57	VAR 1°W (20)
TWR : 122.700 - 281.550	ATIS : 129.125		

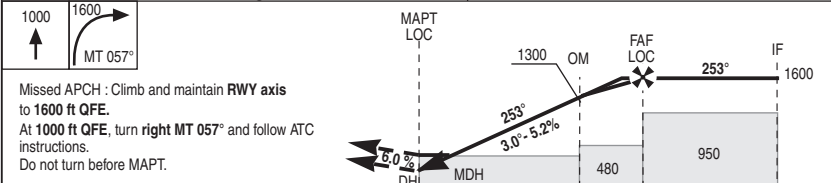


MOCH

TMA 1

ILS True Heading : 251.77

REF HGT : ALT DTHR in ft



SRE	← (NM)	1.2	4.5	5.5	9.7
BH	← (NM)	0.8	4.1	5.1	9.3
DTHR	← (NM)	0.6	3.9	4.9	9.1

CAT	ILS (1)			LOC			CIRCLING			DME BH			
	DH	RVR	OCH	MDH	RVR	OCH	MDH	VIS	OCH	NM	2	3	4
A	200	800	155	360	900	354	770	1600	765	HGT	640	960	1280
B								1600					
C								2400					
D								3600					

Remarks : (1) Increased minimum. DIRCAM

RADAR ILS RWY 25 CHG : VAR, FAF distance. 12 LORIENT LANN BIHOUE LFRH

NATIONAL FRA INSTRUMENT APPROACH

13 LORIENT LANN BIHOUE LFRH TACAN PAR RWY 25

ALT AD : 159 DTHR : 140

27 JAN 2022

PAR : 118.175 SRE : 362.300

RDH : 57

VAR
1°W (20)

APP : 123.000 - 122.100 - 231.875

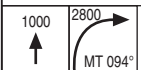
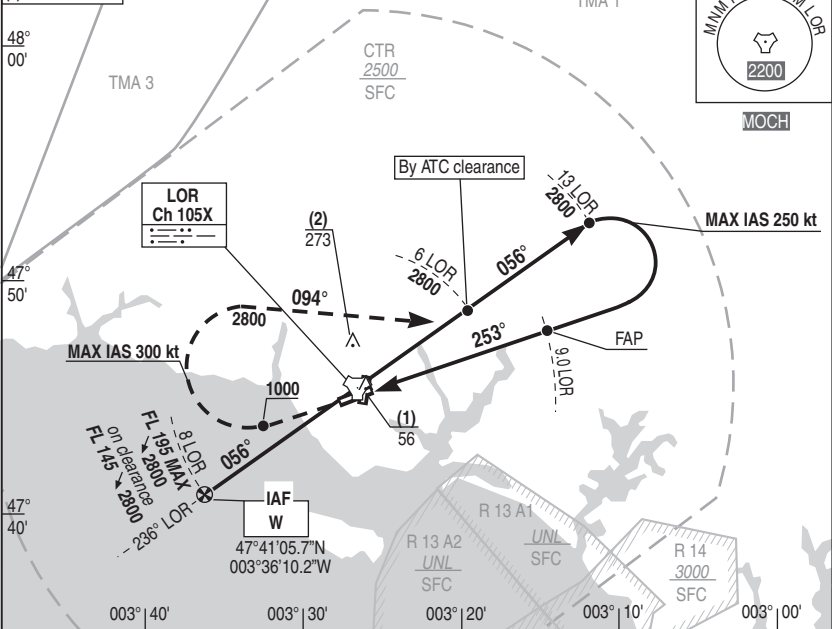
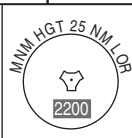
PAR : 118.175

SRE : 362.300

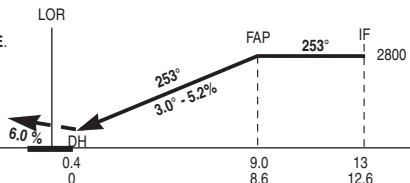
TWR : 122.700 - 281.550

ATIS : 129.125

(1) OCH PAR
(2) OCH CIRCLING



Missed APCH : Climb and maintain RWY axis to 2800 ft QFE.
At 1000 ft QFE, turn right MT 094° to intercept and follow RDL 056° LOR (MT 056°).
At 13 LOR, turn right for new presentation.
Do not turn before LOR.



TAC ← (NM)
DTHR ← (NM)

CAT	PAR (1)			CIRCLING		
	DH	RVR	OCH	MDH	VIS	OCH
A	200	800	155	770	1600	765
B					1600	
C					2400	
D					3600	

Remarks : (1) Increased minimum.

DIRCAM

TACAN PAR RWY 25

CHG : FREQ PAR & SRE

13 LORIENT LANN BIHOUE LFRH

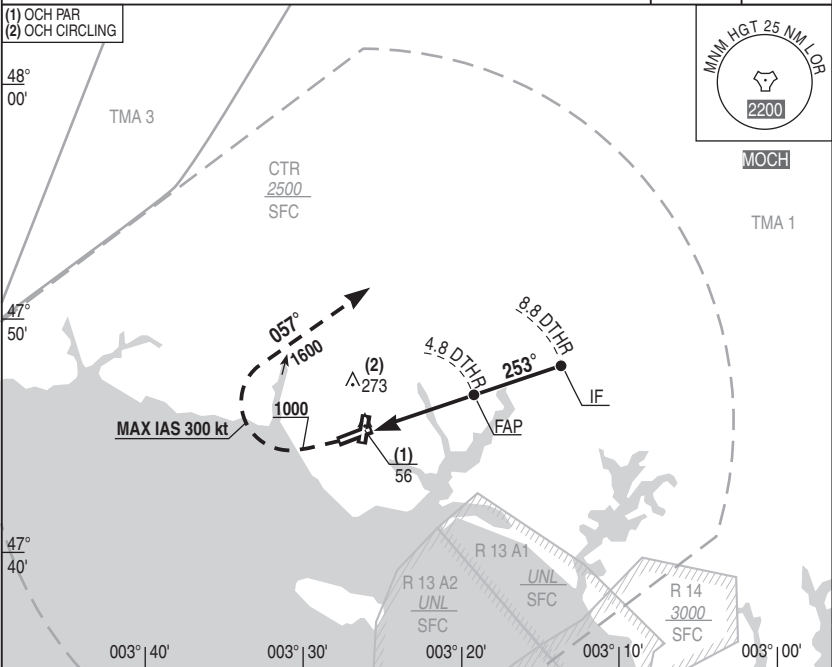
NATIONAL FRA INSTRUMENT APPROACH

14 LORIENT LANN BIHOUE LFRH RADAR PAR RWY 25

ALT AD : 159 DTHR : 140

27 JAN 2022

APP : 123.000 - 122.100 - 231.875	PAR : 118.175	SRE : 362.300	RDH : 57	VAR 1°W (20)
TWR : 122.700 - 281.550	ATIS : 129.125			



REF HGT : ALT DTHR in ft



Missed APCH : Climb and maintain
RWY axis to 1600 ft QFE.
At 1000 ft QFE, turn right MT 057° and follow ATC instructions.

SRE	← (NM)	5.4	9.4
DTHR	← (NM)	4.8	8.8

CAT	PAR (1)			CIRCLING		
	DH	RVR	OCH	MDH	VIS	OCH
A	200	800	155	770	1600	765
B					1600	
C					2400	
D					3600	

Remarks : (1) Increased minimum. DIRCAM

RADAR PAR RWY 25 **CHG : FREQ PAR & SRE** **14 LORIENT LANN BIHOUE LFRH**

NATIONAL FRA INSTRUMENT APPROACH

15 LORIENT LANN BIHOUE LFRH TACAN RWY 25

ALT AD : 159 DTHR : 140

08 OCT 2020

VAR 1°W (20)

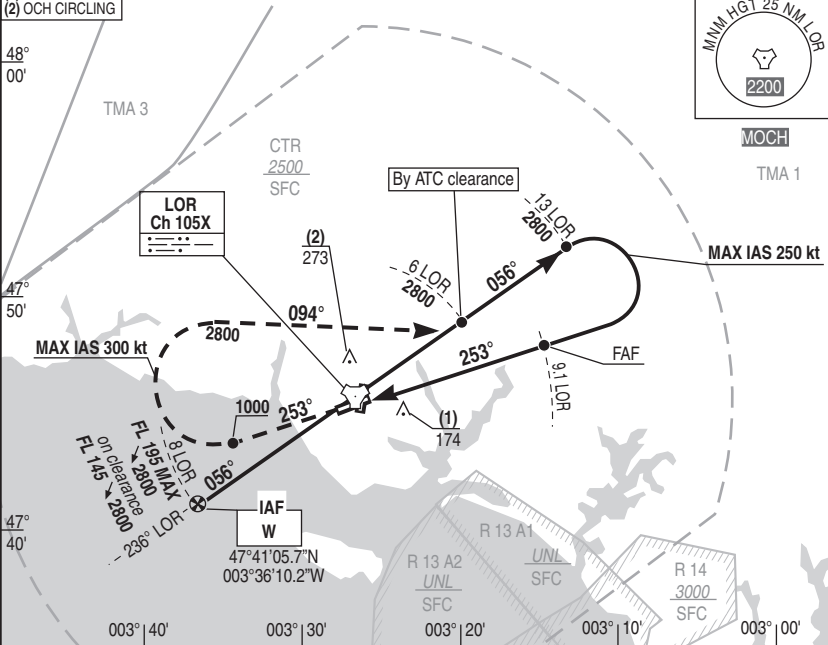
APP : 123.000 - 122.100 - 231.875

VAR
1°W (20)

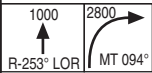
TWR : 122.700 - 281.550

ATIS : 129.125

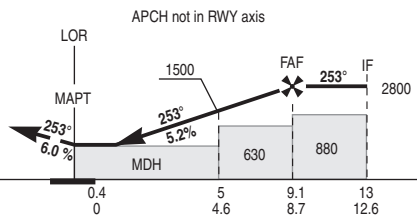
- (1) OCH TACAN
- (2) OCH CIRCLING



REF HGT : ALT DTHR in ft



Missed APCH : Climb RDL 253° LOR (MT 253°) to 2800 ft QFE.
At 1000 ft QFE, turn right MT 094° to intercept and follow RDL 056° LOR (MT 056°).
At 13 LOR, turn right for new presentation.
Do not turn before MAPT.



TAC ← (NM)
DTHR ← (NM)

CAT	TACAN			CIRCLING			DME TACAN								
	MDH	RVR	OCH	MDH	VIS	OCH	NM	8	7	6	5	4	3	2	
A	430	1300	421	770	1600	765	NM	8	7	6	5	4	3	2	
B					1600		HGT	2450	2130	1810	1500	1180	870	550	
C					2400										
D					3600										

Remarks :

DIRCAM

TACAN RWY 25

CHG : FAF DISTANCE.

15 LORIENT LANN BIHOUE LFRH

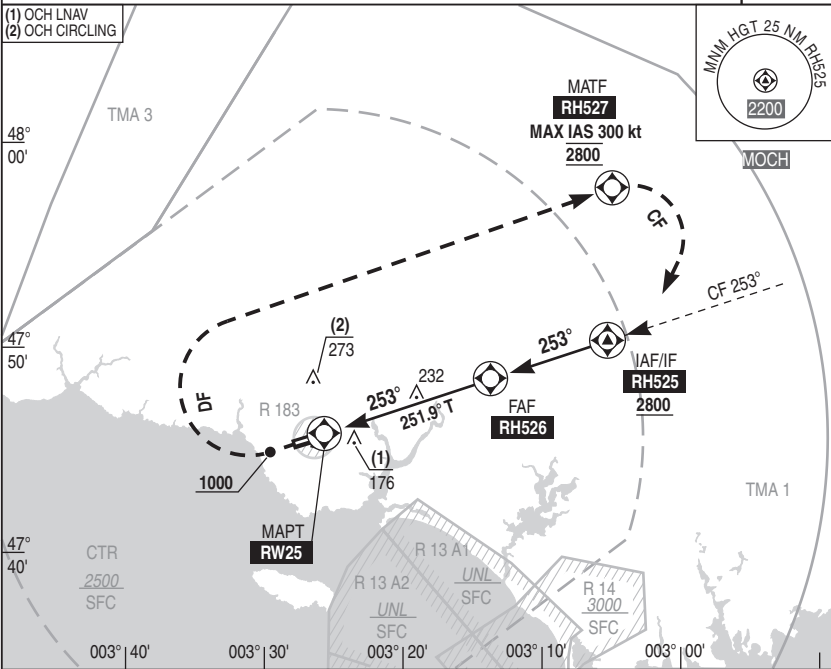
NATIONAL FRA INSTRUMENT APPROACH

ALT AD : 159 DTHR : 140

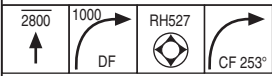
05 NOV 2020

16 LORIENT LANN BIHOUE LFRH INS GNSS RWY 25

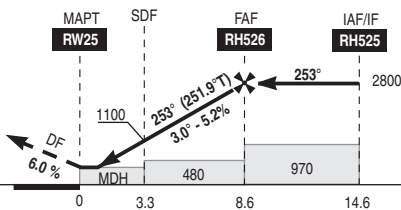
APP : 123.000 - 122.100 - 231.875
TWR : 122.700 - 281.550
ATIS : 129.125
PROCEDURE RESTRICTED TO AIRCRAFTS ALLOWED ONLY
VAR 1°W (20)



REF HGT : ALT DTHR in ft



Missed APCH :
Climb to 2800.
At 1000, turn right direct to RH527.
Then, turn right course 253° to RH525.
Do not turn before MAPT.



DTHR ← (NM)

CAT	LNAV			CIRCLING			DIST RW25
	MDH	RVR	OCH	MDH	VIS	OCH	
A	400	1100	393	570	1600	569	NM 2 3 4 5 6 7 8
B				570	1600		HGT 690 1000 1320 1640 1960 2280 2600
C				600	2400		
D				700	3600		

Remarks :

DIRCAM

INS GNSS RWY 25

CHG : DTHR.

16 LORIENT LANN BIHOUE LFRH

17 LORIENT LANN BIHOUE LFRH

DATA INS GNSS RWY 25

18 JUN 2020

TABLE FOR DATA INDICATOR				LFRH INS GNSS RWY25 - MAG VAR 0,7°W (20)						
N° SEQ	CODING	IDENT	COORDINATES	TYPE	DIST (NM)	MAG TRACK (TRUE TRACK) (°)	TURN	MIN HGT or LEVEL (FT)	MAX HGT or LEVEL (FT)	MAX IAS (KT)
10	IF	RH525	47°50'18.0"N 003°05'13.0"W	FO		253 (252.0)		2800		
20	TF	RH526	47°48'26.6"N 003°13'41.0"W	FO	6.0	253 (252.0)		2800	2800	
30	TF	RW25	47°45'45.15"N 003°25'51.28"W	FO	8.6	253 (251.9)				
40	CH					253 (251.8)		1000	1000	300
50	DF	RH527	47°57'45.9"N 003°04'46.8"W	FO			R	2800	2800	300
60	CF	RH525	47°50'18.0"N 003°05'13.0"W	FO		253 (252.0)	R	2800	2800	300

LEGEND : TF : Track to a Fix DF : Direct to a Fix CF : Course to a Fix CH : Course to a Height FO : Fly Over FB : Fly By

