

# NATIONAL FRA AERODROME CHART

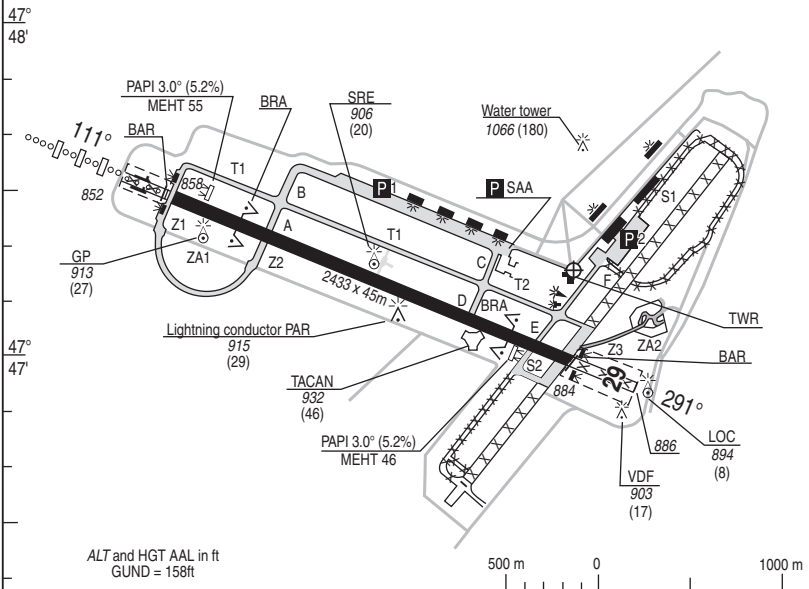
28 JAN 2021

# 01 LUXEUIL ST SAUVEUR LFSX

ALT AD : 886 (32 hPa)

VAR : 2°E (20)

TYPE	LATITUDE	LONGITUDE
THR 11	47°47'29.73"N	006°20'04.32"E
THR 29	47°46'58.84"N	006°21'51.87"E



ALT and HGT AAL in ft  
GUND = 158ft



RWY	006°   20'		006°   21'				006°   22'							
	LIGHTING	APPROACH	RWY	TORA	TODA	ASDA	LDA	Surface	Strength	MINIMUMS TKOF (RVR in m)				
										CAT A.	CAT B.	CAT C.	CAT D.	E
11	HI OTAN	900m	HI / BI	2433	2803	2433	2433	Paved		550				550
29	NIL		HI / BI	2433	2708	2433	2433	17 F/C/W/U		550				550

### OMNIDIRECTIONAL DEPARTURES

**RWY 11** (Alt THR : 858) : Climb **MT 111°** up to **1000ft QFE** then direct route up to enroute safety altitude.

**RWY 29** (Alt THR : 884) : Climb **MT 291°** up to **1000ft QFE** then direct route up to enroute safety altitude.

### MARKINGS - LIGHTINGS :

- Day : lighting: HI/BI line APP RWY (ICAO type cat 1) RWY 11 -BI RWY 11/29
- Flashing lights RWY 11/29 - TWY - AST

DIRCAM

28 JAN 2021

DV (Flight director) : 03.70.56.12.05 - MIL : 863.116.1205

**OTHER INFORMATIONS :**

- BAR RWY11/29
- BRA RWY11 (407m BAR11), RWY29 (423m BAR29)
- QFU change, 20mn delay for set up
- Stopway RWY11/29 downgraded with no standard day marking : no white crosses on the downgraded part of RWY
- Strip B reserved to ACFT code letter A.

**REFUELING :**

- F34 - Oxygen

**ATS HOR :**

- MON-THU : 0730-1615 or end of flights
- FRI : 0730-1400 or end of flights
- SAT, SUN, HOL, HN : O/R previous opened day before 1200 (Summer : -1H).

DIRCAM

# VISUAL ARR & DEP

ALT AD : 886 (32 hPa)

28 JAN 2021

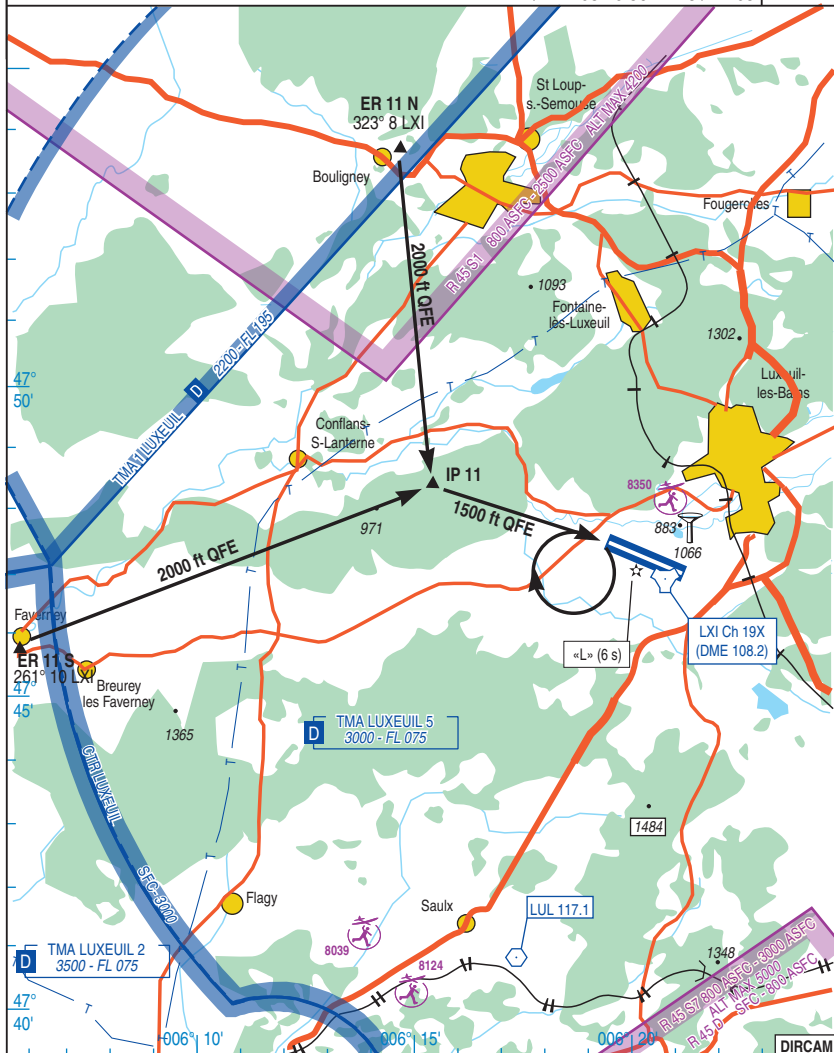
# 02 LUXEUIL ST SAUVEUR LFSX

JET RWY 11

APP : 129.925 - 142.450 -  
338.725 (Recovery) - 282.025 (Climb)  
TWR : 123.300 - 244.350

AD FAF non GAT  
3.5 Km SSW from LUXEUIL  
MIL TEL : 863.116.1205  
BIA - BDP / DV : 03.70.56.12.18 / 12.05

VAR  
2°E  
(20)



JET RWY 11

CHG : TPH, VAR.

02 LUXEUIL ST SAUVEUR LFSX

# VISUAL ARR & DEP

ALT AD : 886 (32 hPa)

28 JAN 2021

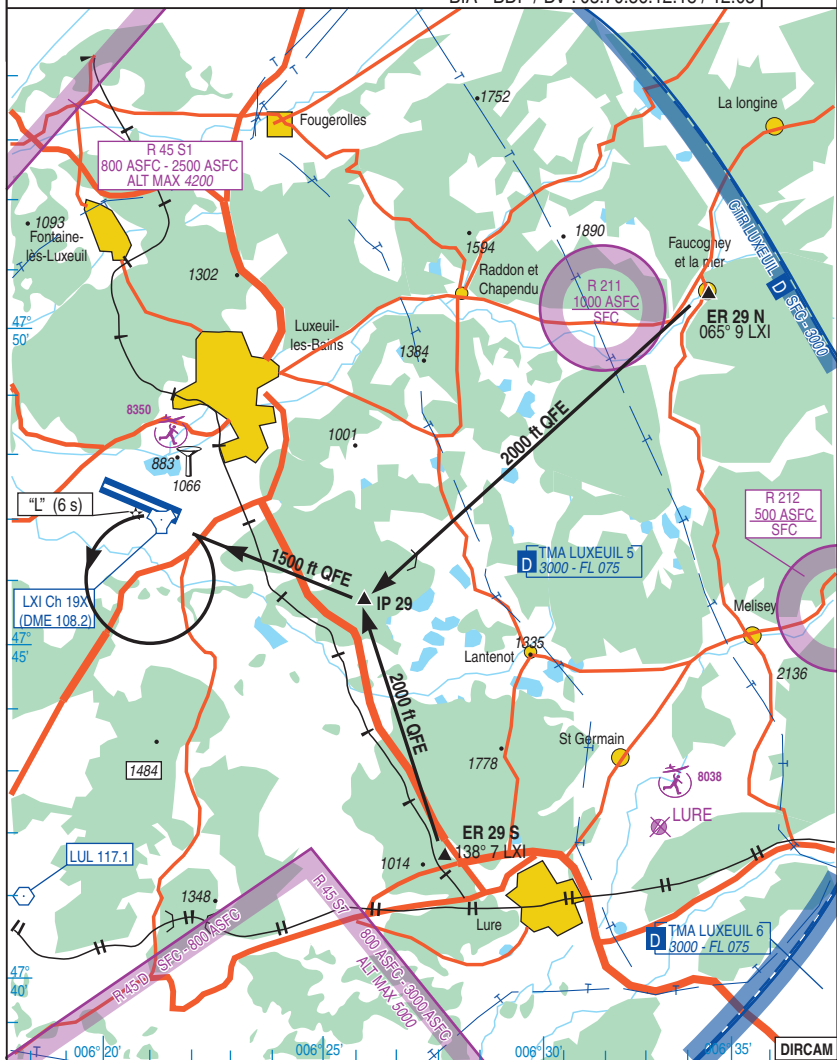
# 03 LUXEUIL ST SAUVEUR LFSX

JET RWY 29

APP : 129.925 - 142.450 -  
338.725 (Recovery) - 282.025 (Climb)  
TWR : 123.300 - 244.350

AD FAF non GAT  
3.5 Km SSW from LUXEUIL  
MIL TEL : 863.116.1205  
BIA - BDP / DV : 03.70.56.12.18 / 12.05

VAR  
2°E  
(20)



JET RWY 29

CHG : TPH, VAR.

03 LUXEUIL ST SAUVEUR LFSX

DIRCAM

28 JAN 2021

**VISUAL ARR AND DEP INSTRUCTIONS**

Airspace restriction :

Refer to AIP FRANCE or French Defense 1/1.000.000 aeronautical chart.

**ARRIVAL :**

Radio contact with APP (CH. 17 or 5), 2min before entering circuit.

Fly at 2000 ft QFE (1500 ft QFE for training ACFT) or under ceiling at the following entry points at IAS 350 kt :

**RWY11** : ER 11 N : 323°/ 8 NM TAC LXI BOULIGNEY (W ST LOUP)- **47°53'42"N - 006°14'25"E**  
 ER 11 S : 261°/10 NM TAC LXI Bridge south of FAVERNEY - **47°45'38"N - 006°06'15"E**

**RWY29** : ER 29 N : 065°/ 9 NM TAC LXI FAUCOGNEY ET LA MER - **47°50'30"N - 006°33'50"E**  
 ER 29 S : 138°/ 7 NM TAC LXI FACTORY WEST LURE - **47°41'21"N - 006°28'25"E**

Report IP 11 - IP 29 at 2000 ft QFE (IP are located 3 NM ahead from lead in RWY). Then descent to 1500 ft QFE (1000 ft QFE training ACFT).

Fly level 1500 ft QFE (Fighters ACFT), at 1000 ft QFE (training ACFT).

RWY11 : break right.

RWY29 : break left.

**RESTRICTIONS QFU 29:**

Fly by ER 29 N when AD status "BLUE" or "WHITE" only.

**DEPARTURE:**

Multidirectional departure 1500 ft QFE MAX, except in ARR sectors (between ER and IP) of QFU in use 1000 ft QFE MAX.

Say HGT and exit point when taxiing. When airborne, DEP at or below 2500 ft QFE expect contact on CH TWR CH 14; above 2500 ft QFE expect contact on CH 15

**SPECIAL INSTRUCTIONS:**

When AD is color state GREEN "OAT Victor Special": DEP under OAT Victor Special are possible at 1000 ft QFE or below clouds.

Report HGT and exit point when taxiing. DEP through ARR sectors are submitted to APP before TKOF

NATIONAL FRA  
ALT AD : 886 (32 hPa)

28 JAN 2021

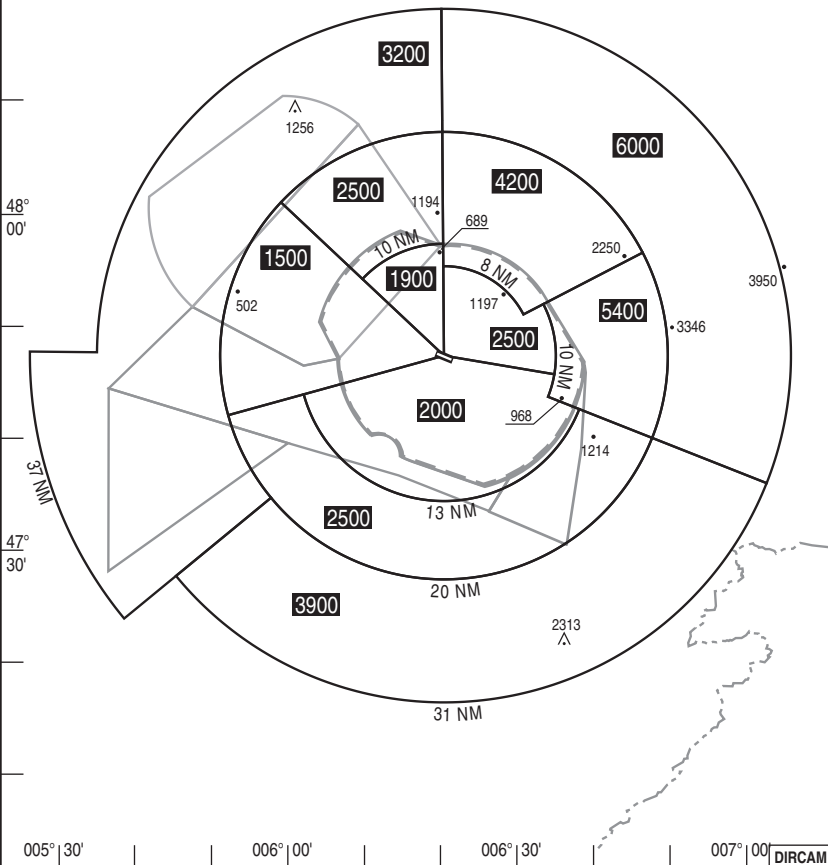
05 LUXEUIL SAINT-SAUVEUR LFSX  
HMG

APP : 338.725 - 362.200  
TWR : 244.350 - 257.800

VAR  
2°E  
(20)

COMMUNICATION FAILURE : Apply french national regulation.  
HMG corresponding to normal working of APP surveillance means.

The published minimum heights integrate  
a correction for low temperatures.



HMG

CHG : VAR.

05 LUXEUIL SAINT-SAUVEUR LFSX

# NATIONAL FRA INSTRUMENT APPROACH

# 06 LUXEUIL SAINT-SAUVEUR LFSX HPMA TACAN ILS or LOC RWY 11

ALT AD : 886 THR : 858

28 JAN 2021

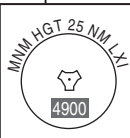
APP : 338.725 (Recovery) - 282.025 (Climb)  
TWR : 244.350

ILS : LXI 108.10

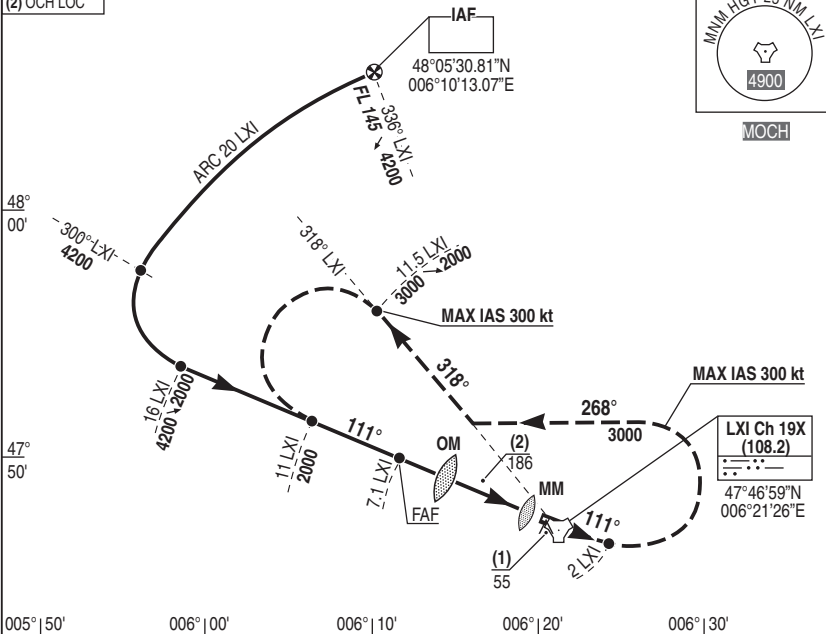
RDH : 52

VAR 2°E (20)

- (1) OCH ILS
- (2) OCH LOC

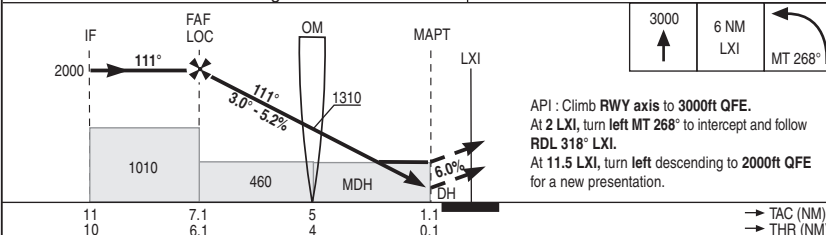


MOCH



ILS True heading : 113.07°

REF HGT : ALT THR in ft



API : Climb RWY axis to 3000ft QFE.  
At 2 LXI, turn left MT 268° to intercept and follow RDL 318° LXI.  
At 11.5 LXI, turn left descending to 2000ft QFE for a new presentation.

CAT	ILS			LOC			CIRCLING (1)			TACAN														
	DH	RVR	OCH	MDH	RVR	OCH	MDH	VIS	OCH	NM	7	6	5	4	3	2								
A	200	550	152	440	1300	432	1020	1600	1013	1950	1630	1310	990	680	360									
B																								
C																								
D/E																								

Remarks : (1) Circling by day. VSS checked.

DIRCAM

HPMA TACAN ILS or LOC RWY 11

CHG : VAR.

06 LUXEUIL SAINT-SAUVEUR LFSX

# NATIONAL FRA INSTRUMENT APPROACH

## 07 LUXEUIL SAINT-SAUVEUR LFSX HPMA TACAN / PAR RWY 11

ALT AD : 886 THR : 858

28 JAN 2021

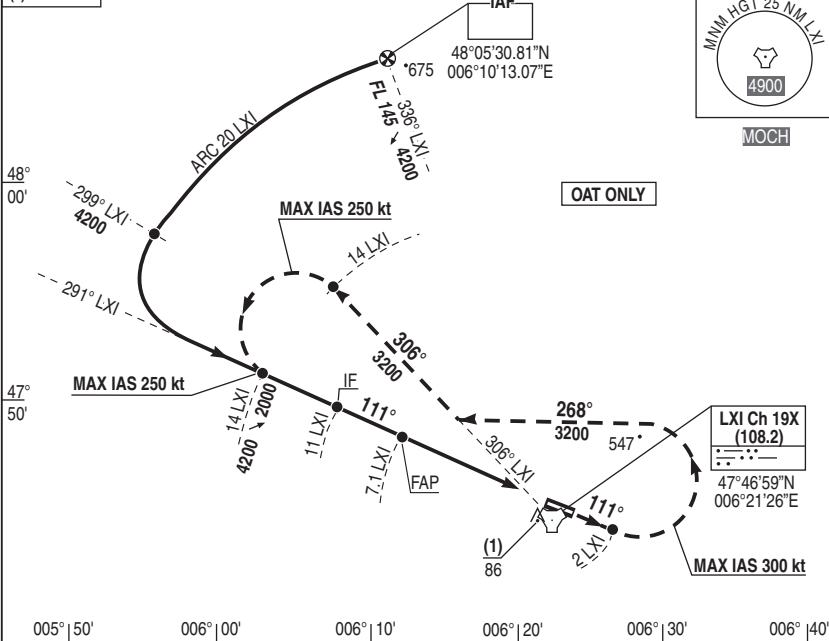
APP : 338.725 (Recovery) - 282.025 (Climb)

RDH : 52

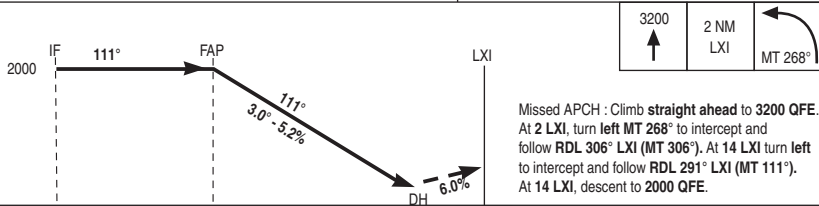
VAR  
2°E (20)

TWR : 244.350

(1) OCH PAR



REF HGT : ALT THR in ft



CAT	PAR			CIRCLING (1)		
	DH	RVR	OCH	MDH	VIS	OCH
A	200	800	185	1020	1600	1013
B					1600	
C					2400	
D/E					3600	

→ TAC (NM)  
→ THR (NM)

Remarks : (1) Circling by day.

DIRCAM

HPMA TACAN / PAR RWY 11

CHG : VAR.

07 LUXEUIL SAINT-SAUVEUR LFSX



# NATIONAL FRA INSTRUMENT APPROACH

## 08 LUXEUIL SAINT-SAUVEUR LFSX HPMA RADAR / PAR RWY 11

ALT AD : 886 THR : 858

28 JAN 2021

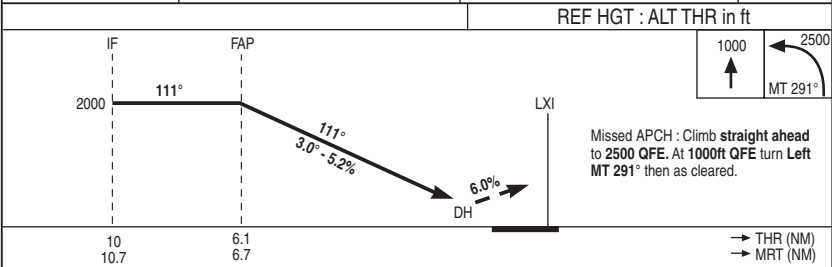
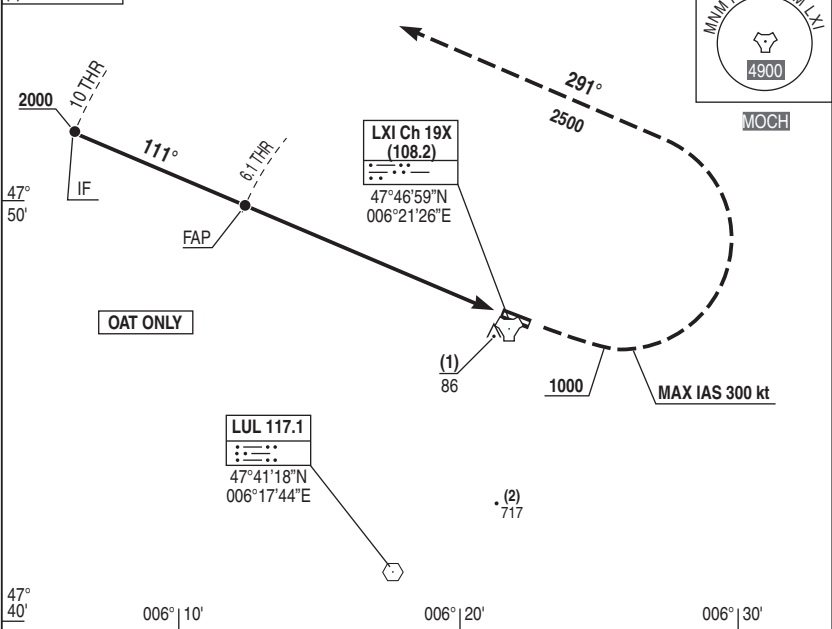
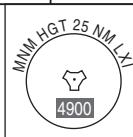
APP : 338.725 (Recovery) - 282.025 (Climb)

RDH : 52

VAR  
2°E (20)

TWR : 244.350

- (1) OCH PAR
- (2) OCH CIRCLING



CAT	PAR			CIRCLING (1)		
	DH	RVR	OCH	MDH	VIS	OCH
A	200	800	185	1020	1600	1013
B					1600	
C					2400	
D/E					3600	

Remarks : (1) Circling by day.

DIRCAM

HPMA RADAR / PAR RWY 11

CHG : VAR.

08 LUXEUIL SAINT-SAUVEUR LFSX

# NATIONAL FRA INSTRUMENT APPROACH

ALT AD : 886 THR : 858

28 JAN 2021

# 09 LUXEUIL SAINT-SAUVEUR LFSX HPMA TACAN RWY 11

APP : 338.725 (Recovery) - 282.025 (Climb)

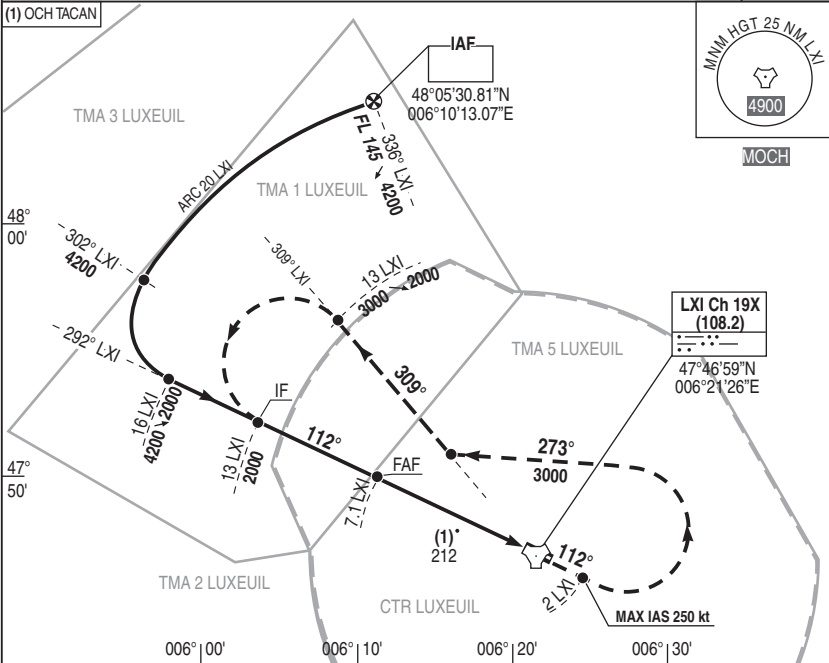
TWR : 244.350

VAR  
2°E (20)

(1) OCH TACAN

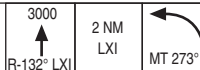
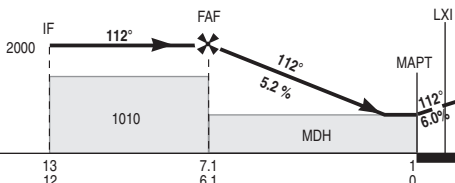


MOCH



REF HGT : ALT THR in ft

APCH not in RWY axis



Missed APCH : Climb RDL 112° LXI (MT 112°) up to 3000ft QFE.  
At 2 LXI, turn left MT 273° to intercept and follow RDL 309° LXI (MT 309°).  
At 13 LXI turn left for a new presentation.

13  
12

7.1  
6.1

1  
0

→ TAC (NM)  
→ THR (NM)

CAT	TACAN			CIRCLING (1)			TACAN	NM	6	5	4	3
	MDH	RVR	OCH	MDH	VIS	OCH						
A	460	1400	459	1020	1600	1013	HPMA	6	1620	1300	980	670
B					1600							
C					2400							
D					3600							

Remarks : (1) Circling by day.

DIRCAM

HPMA TACAN RWY 11

CHG : VAR.

09 LUXEUIL SAINT-SAUVEUR LFSX

# NATIONAL FRA INSTRUMENT APPROACH

# 10 LUXEUIL SAINT-SAUVEUR LFSX HPMA RADAR RWY 11

ALT AD : 886 THR : 858

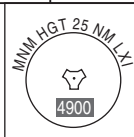
28 JAN 2021

APP : 338.725 (Recovery) - 282.025 (Climb)

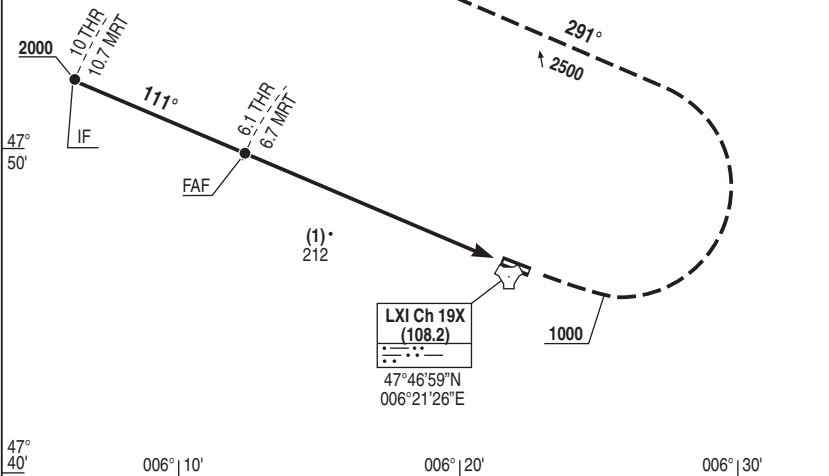
TWR : 244.350

VAR  
2°E (20)

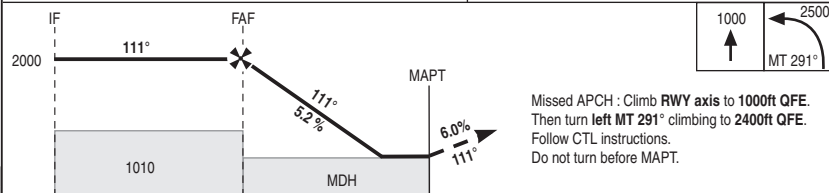
(1) OCH PAR



MOCH



REF HGT : ALT THR in ft



10 10.7 6.1 6.7 1 1.7 → THR (NM)  
→ MRT (NM)

CAT	PAR			MRT NM	5	4	3	
	MDH	RVR	OCH					
A	460	1400	458	THR NM	6	5	4	
B				5.3	4.3	3.3	2.3	
C				HGT	1750	1430	1110	800
D/E								

Remarks :

DIRCAM

# NATIONAL FRA INSTRUMENT APPROACH

ALT AD : 886 THR : 884

28 JAN 2021

## 11 LUXEUIL SAINT-SAUVEUR LFSX HPMA RADAR / PAR RWY 29

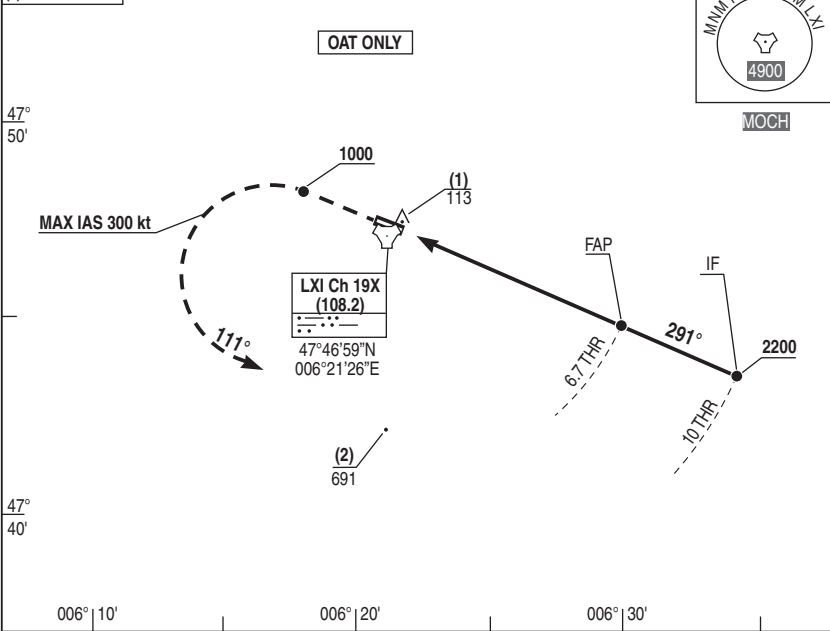
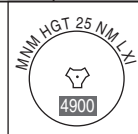
APP : 338.725 (Recovery) - 282.025 (Climb)

RDH : 50

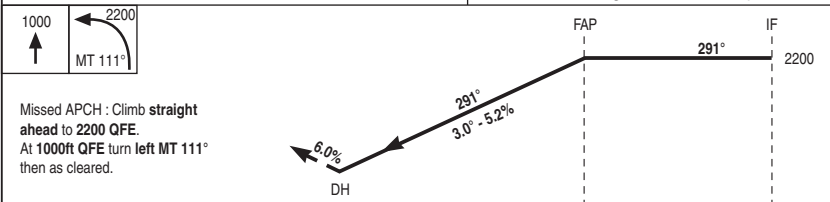
VAR  
2°E (20)

TWR : 244.350

- (1) OCH PAR
- (2) OCH CIRCLING



REF HGT : ALT THR in ft



THR ← (NM)	6.7	10
MRT ← (NM)	7.5	10.7

CAT	PAR			CIRCLING (1)		
	DH	RVR	OCH	MDH	VIS	OCH
A	210	1200	210	990	1600	987
B					1600	
C					2400	
D/E					3600	

Remarks : (1) Circling by day. DIRCAM

HPMA RADAR / PAR RWY 29

CHG : VAR.

11 LUXEUIL SAINT-SAUVEUR LFSX

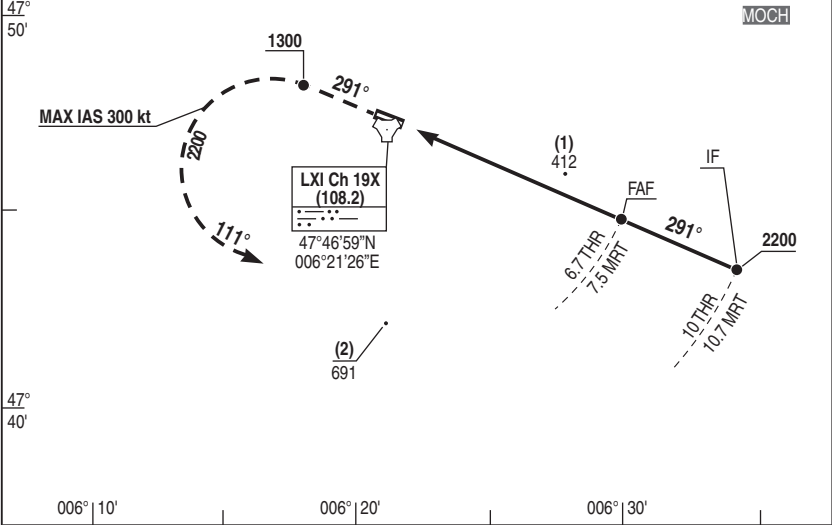
# NATIONAL FRA INSTRUMENT APPROACH

# 12 LUXEUIL SAINT-SAUVEUR LFSX HPMA RADAR RWY 29

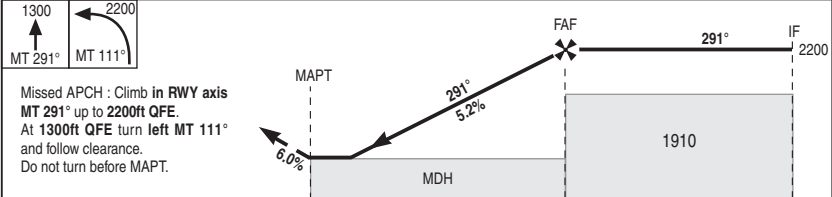
ALT AD : 886 THR : 884 28 JAN 2021

APP : 338.725 (Recovery) - 282.025 (Climb) VAR 2°E (20)  
TWR : 244.350

- (1) OCH PAR
- (2) OCH CIRCLING



REF HGT : ALT THR in ft



THR ← (NM)	1.9	6.7	10
MRT ← (NM)	2.6	7.5	10.7

CAT	SRE			CIRCLING (1)			SRE	NM	6	5	4	3
	MDH	RVR	OCH	MDH	VIS	OCH						
A		1500			1600		HGT	1760	1440	1120	800	
B		1500			1600							
C	660	2400	658	990	2400	987						
D		2400			3600							

Remarks : (1) Circling by day. VSS checked. DIRCAM

NATIONAL FRA  
INSTRUMENT APPROACH

SID 01 LUXEUIL SAINT-SAUVEUR LFSX

ALT AD : 886 THR 11 : 858

28 JAN 2021

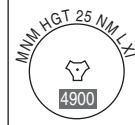
DEPARTURE RWY11

APP : 338.725 (Recovery) - 282.025 (Climb)

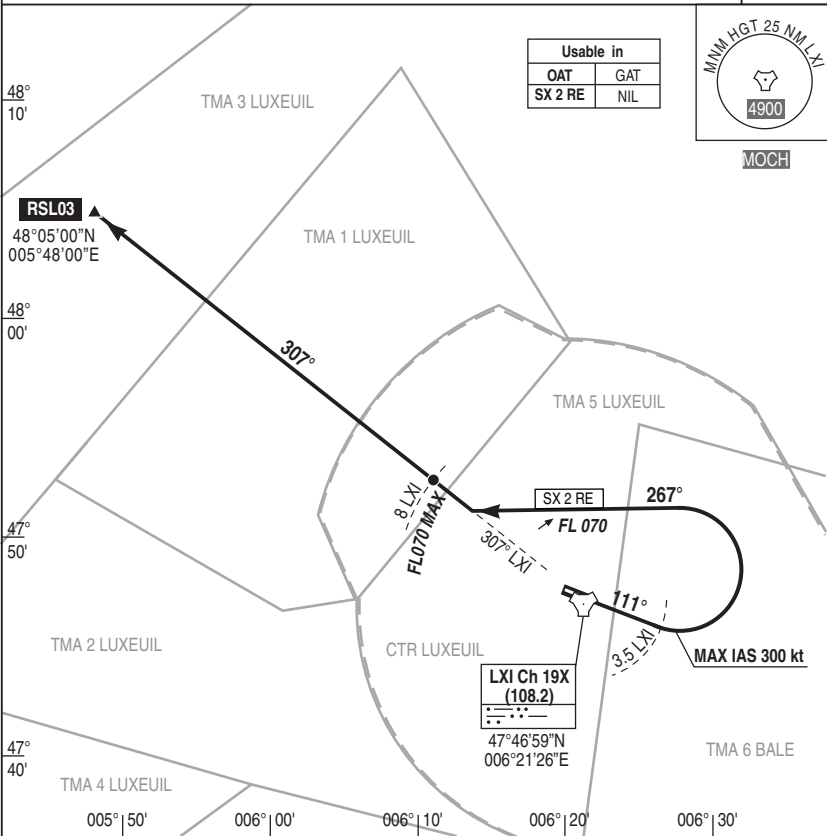
VAR  
2°E (20)

TWR : 244.350

Usable in	
OAT	GAT
SX 2 RE	NIL



MOCH



LXI Ch 19X  
(108.2)  
47°46'59"N  
006°21'26"E

REF HGT : ALT THR in ft

**SX 2 RE** : Climb MT 111° up to **FL 070**.

At 3.5 LXI, turn left MT 267° to intercept and follow **RDL 307° LXI (MT 307°)** to **RSL 03**.

At 8 LXI resume climbing to cleared level until handover.

DIRCAM

DEPARTURE RWY11

CHG : VAR

SID 01 LUXEUIL SAINT-SAUVEUR LFSX

NATIONAL FRA  
INSTRUMENT APPROACH

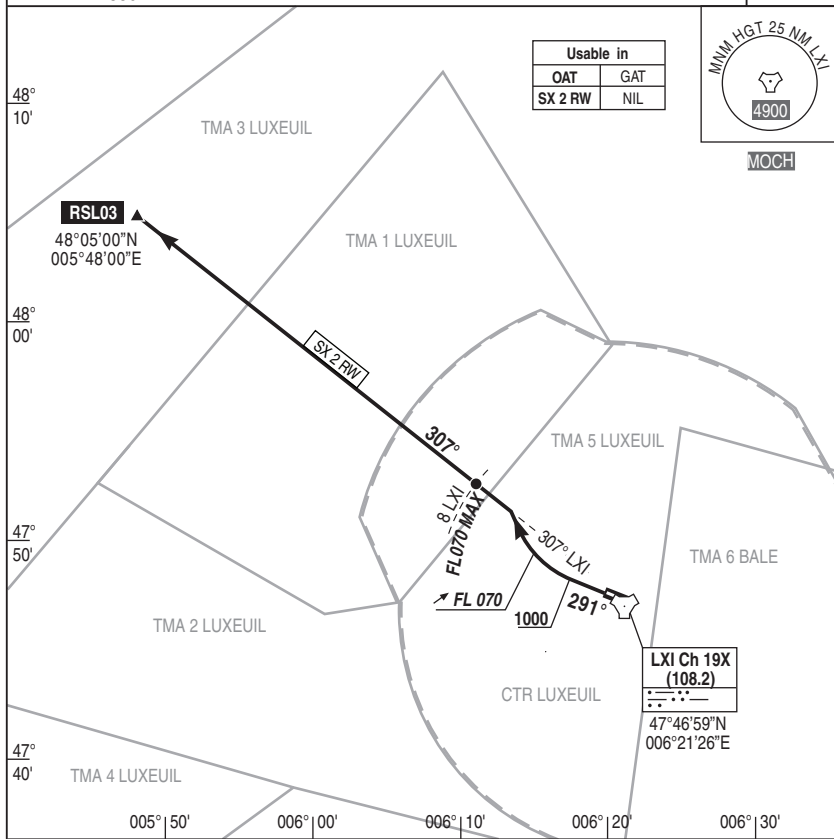
SID 02 LUXEUIL SAINT-SAUVEUR LFSX  
DEPARTURE RWY29

ALT AD : 886 THR 11 : 884

28 JAN 2021

APP : 338.725 (Recovery) - 282.025 (Climb)  
TWR : 244.350

VAR  
2°E (20)



**SX 2 RW** : Climb MT 291° up to **FL 070**.

At 1000 ft, turn **right** to intercept and follow **RDL 307° LXI** (MT 307°) to **RSL 03**.

At **8 LXI** resume climbing to cleared level until handover.

Do not turn before DER.

DIRCAM

