

NATIONAL FRA AERODROME CHART

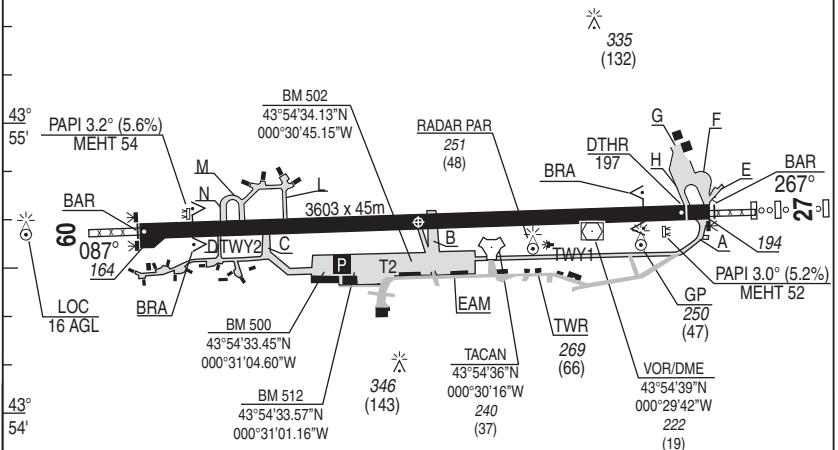
31 DEC 2020

01 MONT DE MARSAN LFBM

ALT AD : 203 (8 hPa)

VAR : 0°E (20)

TYPE	LATITUDE	LONGITUDE
THR 09	43°54'38.58"N	000°31'54.40"W
THR 27	43°54'44.25"N	000°29'13.07"W
DTHR 27	43°54'44.07"N	000°29'18.50"W



ALT et HGT en ft
GUND = 157 ft

RWY	LIGHTING		DECLARED DISTANCES				Surface Strength	MINIMUMS TKOF (RVR in m)			
	APPROACH	RWY	TORA	TODA	ASDA	LDA		CAT A	B	C	D
09	NIL	HI	3603	3603	3603	3603	Paved	550			
27	HI 720m	HI	3603	3603	3603	3482		550			

OMNIDIRECTIONAL DEPARTURES

RWY 09 (Alt THR : 164) : Climb **MT 087°** up to **1000ft QFE** then direct route up to enroute safety altitude.

RWY 27 (Alt THR : 194) : Climb **MT 267°** up to **1000ft QFE** then direct route up to enroute safety altitude.

MARKINGS - LIGHTINGS :

- Day lighting HI line APP (720m only) RWY 27 – HI/BI RWY 09/27
- Flashing lights RWY 09/27

DIRCAM

DV (Flights Director) : 05.58.46.76.57 - 811.118.2850

OTHERS INFORMATIONS:

- BAR F40 at each QFU Stop brake Bliss: (500 m, 1640 ft)
- BAR RWY 09 (width: (45 m, 148 ft) -BAR RWY 27: (width: (45 m, 148 ft))
- Warning : Be aware of not to land on BAR RWY 27 (cause of topographic configuration)
- JET CRASH on RWY 09/27
- BRA RWY 27 - BRA RWY 09
- Break arrival and go around are prohibited after 0000 LOC except for security
- Descent and climbing operations, APP/APP procedures and exercices using the airspaces associated to Mont de Marsan by non based ACFT are subjected to permission of the ESCA operations chief (811 118 6289 or 05.58.46.76.00 ext 26289) or on the day itself of the duty officer (811 518 5001 - 811 518 4679 - emergency 05.58.46.28.41)
- AD limitations : MON-FRI : 1100-1300 LOC; 1800-1900 LOC non based ACFT training prohibited

APPROACH LIGHTING SYSTEM

- PAPI RWY 09 : Distance from THR : (294 m, 964 ft)
- PAPI RWY 27: Distance from THR : (287 m, 941 ft)
- Sequence Flashing lights RWY 09

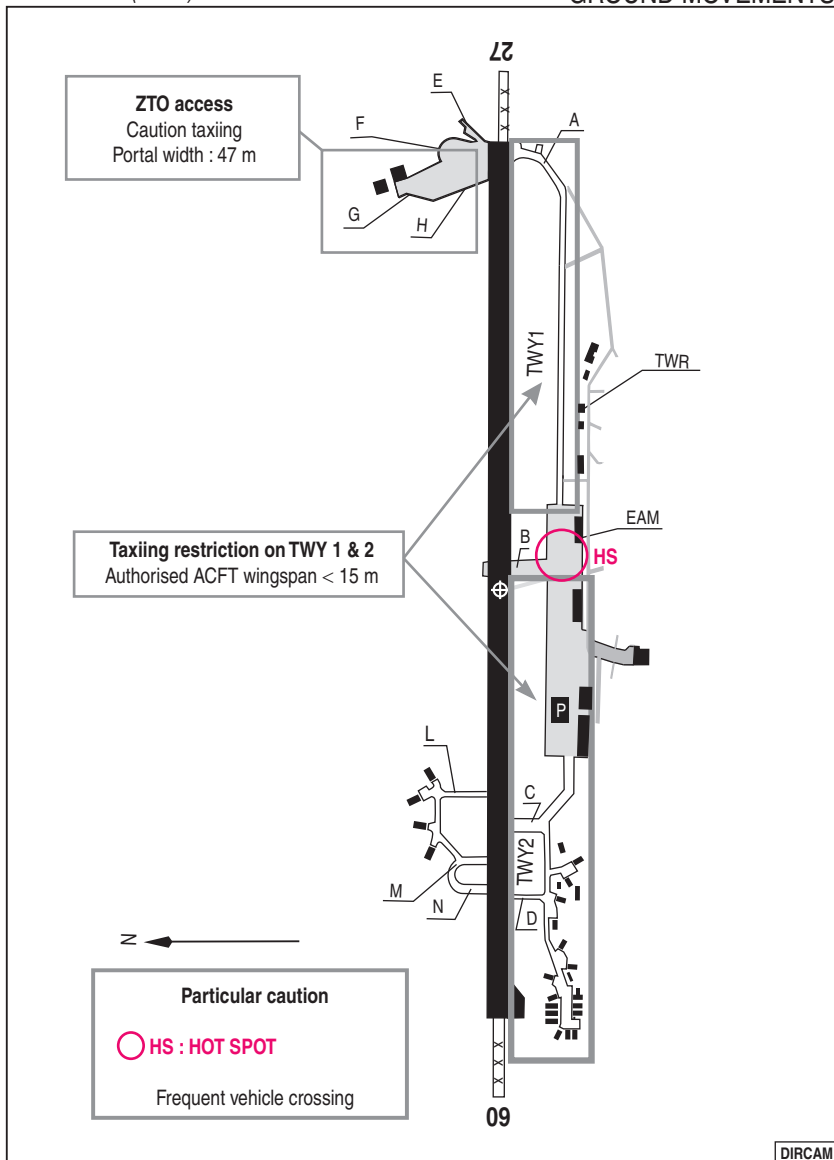
REFUELING

- F18 - F34 – Oxygen

ATS HOR (Summer -1 h)

- MON-THU: 0730-1600, Out of HOR: O/R before 1530
- FRI: 0730-1430 HN: O/R before 1330
- SAT, SUN, HOL: O/R before 1330
The last previous open day

DIRCAM



VISUAL ARR & DEP

ALT AD : 203 (8 hPa)

31 DEC 2020

02 MONT DE MARSAN LFBM

JET RWY 09 & 27

APP : 142.450 - 375.100 (Climb) - 344.175 - 362.300

TWR : 142.750 - 282.350

AD FAF non GAT

2 Km N from MONT DE MARSAN

TEL : 05.58.05.49.78

MIL TEL : 811 518 50 01

VAR
0°E
(20)



JET RWY 09 & 27

CHG : VAR

02 MONT DE MARSAN LFBM

VISUAL ARR & DEP INSTRUCTIONS

Airspace restriction :

Refer to AIP FRANCE or French Defense 1/1.000.000 aeronautical chart

ARRIVALS :

Contact MARSAN APP 3 MIN before entry point. Level 2000 ft QFE on following points:

RWY 09 : ER NW 293° / 10,8 NM TACAN MDM. (43°58'32.59"N – 000°44'16.14"W)

ER SW 229° / 14,4 NM TACAN MDM. (43°45'02.10"N – 000°44'57.57"W)

RWY 27 : ER NE 054° / 10,5 NM TACAN MDM. (44°01'06.75"N – 000°18'39.19"W)

ER SE 116° / 10 NM TACAN MDM. (43°50'08.69"N – 000°18'01.20"W)

Fly on to IP 09 (43°54'29.70"N – 000°36'03.10"W) or

IP 27 (43°54'52.71"N – 000°25'09.77"W) steady level 2000 ft QFE (IP are 3 NM centre line from lead in RWY).

Break presentation at 1500 ft QFE.

RWY 09 : Break to left.**RWY 27** : Break to right.**NORTH CIRCUITS:****CP** (43°58'08.36"N – 000°31'53.00"W) : abeam CERE / mandatory report point.**G** (43°58'00.57"N – 000°37'03.95"W) / **L** (43°58'19.19"N – 000°24'13.13"W) : Report points on TWR request.**HEIGHT** : 1500 ft QFE.**DEPARTURES:**

Arrival and departure points are the same, at 1500 ft QFE.

RWY 09 : NOISE ABATEMENT PROCEDURE(NAP):

Climb and maintain RWY axis to 800 ft QFE MAX till end of RWY, then turn left heading 059 ° and climb to 1500 ft QFE. Report exiting CTR / R34B or TMA2 / R34C.

RWY 27 : Climb and maintain RWY axis 800 ft QFE MAX till end of RWY, then climb to 1500 ft QFE.

For south departure, do not turn before 2 NM TACAN MNM,

For north departure, avoid flying over ST MARTIN D'ONEY.

Report exiting CTR / R34B or TMA2 / R34C.

NOISE ABATEMENT PROCEDURE : "NAP"

When "NAP" is in use, heights of circuits (arrivals, north circuits and departures) are increased by 1000 ft until IP for a break arrival at 1500 ft QFE.

NATIONAL FRA
ALT AD : 209 (8 hPa)

31 DEC 2020

04 MONT DE MARSAN LFBM
HMG

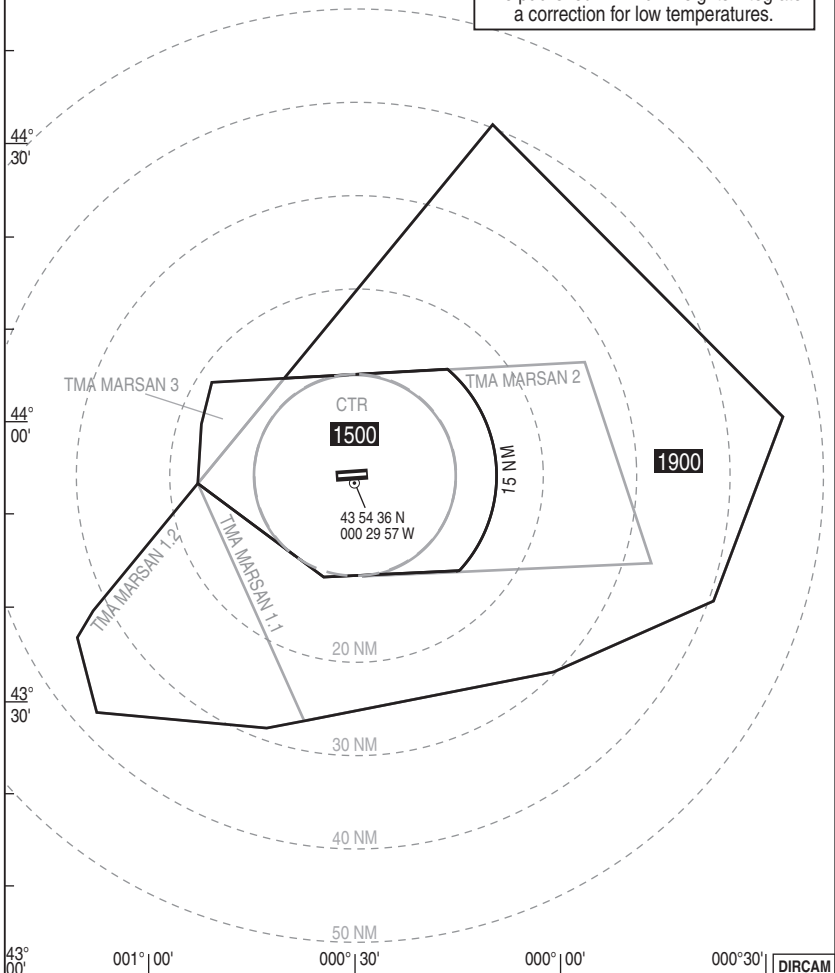
APP : 142.450 - 375.100 - 344.175 - 362.300

TWR : 142.750 - 282.350

VAR
0°E
(20)

COMMUNICATION FAILURE : Apply french national regulation.
HMG corresponding to normal working of approach surveillance means.

The published minimum heights integrate
a correction for low temperatures.



43° 00' 001° 00' 000° 30' 000° 00' 000° 30' DIRCAM
HMG CHG : Low Temperatures revise, VAR 04 MONT DE MARSAN LFBM

NATIONAL FRA INSTRUMENT APPROACH

05 MONT DE MARSAN LFBM TACAN / PAR RWY 09

ALT AD : 203 THR : 164

31 DEC 2020

APP : 142.450 - 375.100 - 344.175 - 362.300

RDH : 50

VAR
0°E (20)

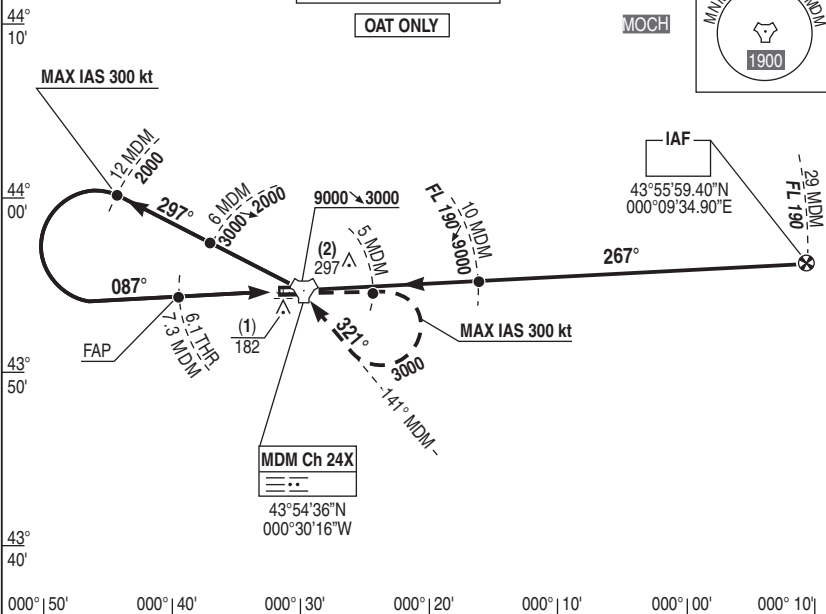
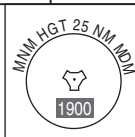
TWR : 142.750 - 282.350

(1) OCH PAR
(2) OCH CIRCLING

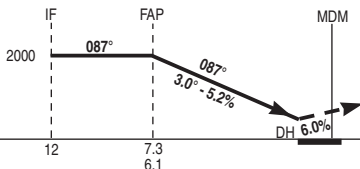
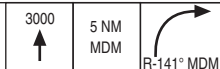
UNDER RADAR SURVEILLANCE

OAT ONLY

MOCH



REF HGT : ALT THR in ft



Missed APCH : Climb and maintain RWY axis to 3000 ft. At 5 TAC MDM turn right to intercept RDL 141° MDM (MT 321°) for a new presentation.

→ TAC (NM)
→ THR (NM)

CAT	PAR (1)			CIRCLING (2) (3)		
	DH	RVR	OCH	MDH	VIS	OCH
A	250	1300	209	800	1600	797
B					1600	
C					2400	
D/E					3600	

Remarks : (1) Increased minimums. (2) Forbidden south of RWY. (3) Circling by day only.

DIRCAM

TACAN / PAR RWY 09

CHG : VAR

05 MONT DE MARSAN LFBM

NATIONAL FRA INSTRUMENT APPROACH

06 MONT DE MARSAN LFBM SRA / PAR RWY 09

ALT AD : 203 THR : 164

31 DEC 2020

APP : 142.450 - 375.100 - 344.175 - 362.300

RDH : 50

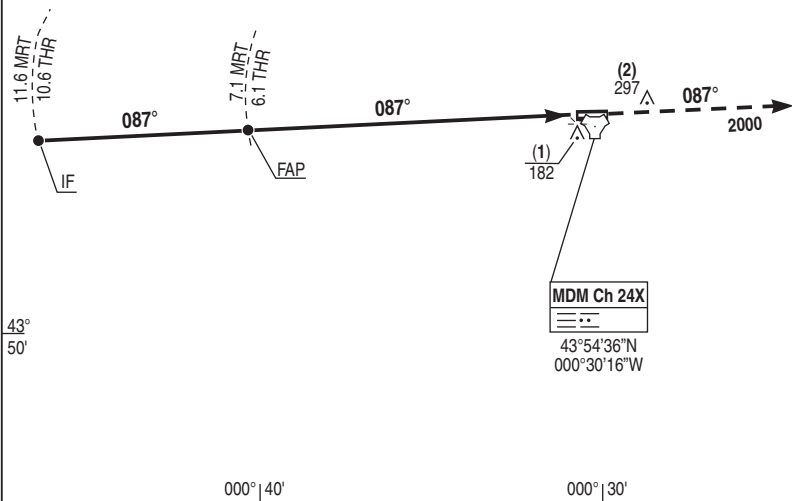
VAR
0°E (20)

TWR : 142.750 - 282.350

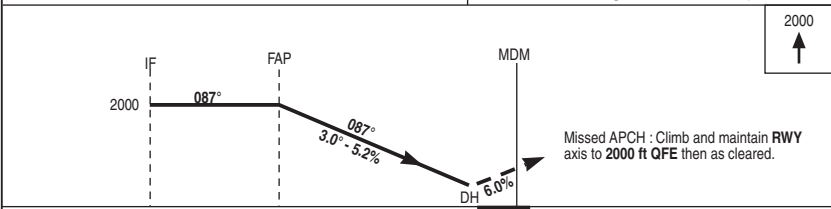
(1) OCH PAR $\frac{44^\circ}{00'}$
(2) OCH CIRCLING $\frac{44^\circ}{00'}$

OAT ONLY

MOCH



REF HGT : ALT THR in ft



2000
↑

Missed APCH : Climb and maintain RWY axis to 2000 ft QFE then as cleared.

→ THR (NM)
→ MRT (NM)

CAT	PAR (1)			CIRCLING (2) (3)		
	DH	RVR	OCH	MDH	VIS	OCH
A	250	1300	209	800	1600	797
B					1600	
C					2400	
D/E					3600	

Remarks : (1) Increased minimums. (2) Forbidden south of RWY. (3) Circling by day only.

DIRCAM

SRA / PAR RWY 09

CHG : VAR

06 MONT DE MARSAN LFBM

NATIONAL FRA INSTRUMENT APPROACH

07 MONT DE MARSAN LFBM TACAN RWY 09

ALT AD : 203 THR : 164

31 DEC 2020

APP : 142.450 - 375.100 - 344.175 - 362.300

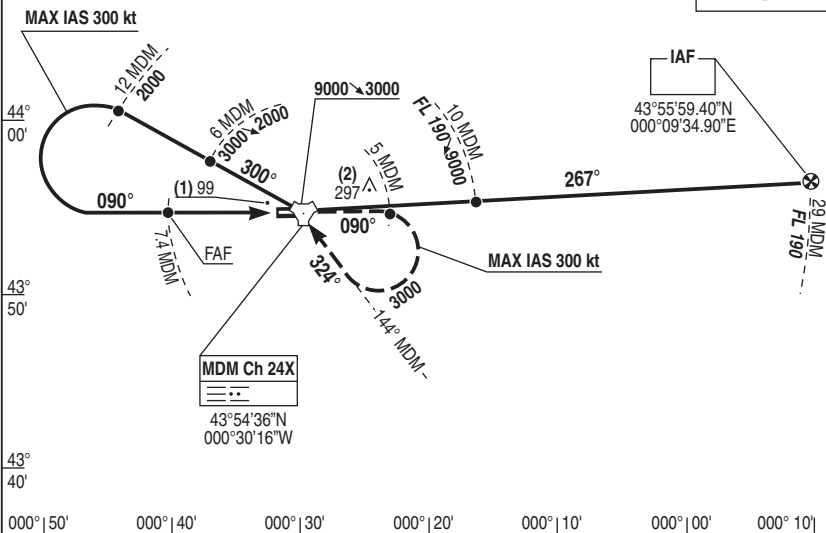
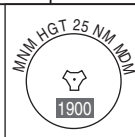
VAR
0°E (20)

TWR : 142.750 - 282.350

(1) OCH TACAN
(2) OCH CIRCLING

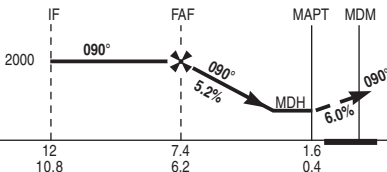
UNDER RADAR SURVEILLANCE

MOCH

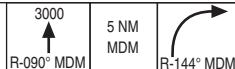


REF HGT : ALT THR in ft

APCH not in RWY axis



Missed APCH : Climb towards 3000 ft on course to TAC MDM. Above MDM intercept RDL 090° (MT 090°).
At 5 TAC MDM turn right to intercept RDL 144° MDM (MT 324°) for new presentation.



TAC → (NM)
THR → (NM)

CAT	TACAN			CIRCLING (1) (2)			TACAN	NM	7	6	5	4	3		
	MDH	RVR	OCH	MDH	VIS	OCH								HGT	1890
A	350	1500	345	800	1600	797									
B		1500			1600										
C		1600			1600										
D/E		1600			1600										

Remarks : (1) Forbidden south of RWY. (2) Circling by day only.

DIRCAM

TACAN RWY 09

CHG : VAR

07 MONT DE MARSAN LFBM

NATIONAL FRA INSTRUMENT APPROACH

ALT AD : 203 THR : 164

31 DEC 2020

08 MONT DE MARSAN LFBM RADAR INS GNSS RWY 09

APP : 142.450 - 375.100 - 344.175 - 362.300
TWR : 142.750 - 282.350

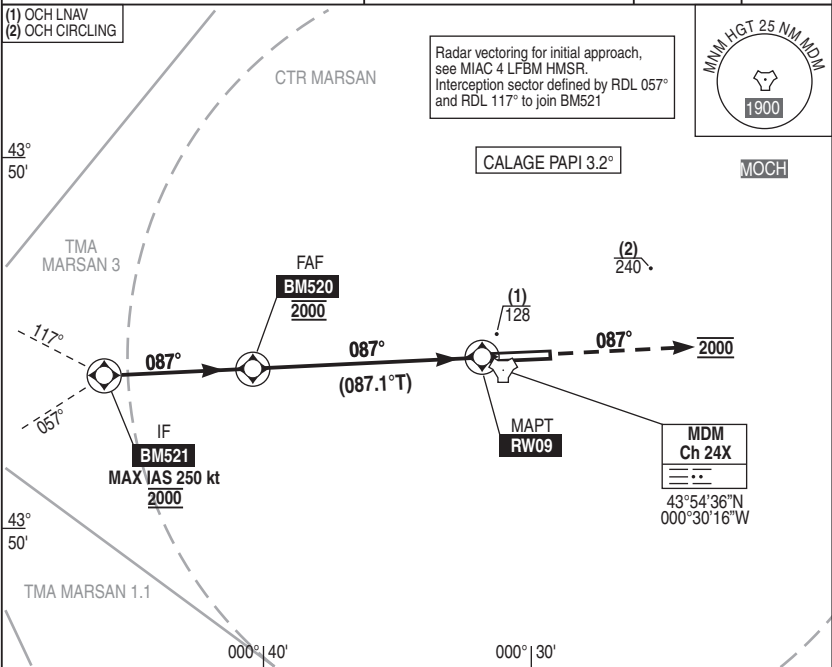
PROCEDURE RESTRICTED TO
AIRCRAFTS ALLOWED ONLY

RNP APCH

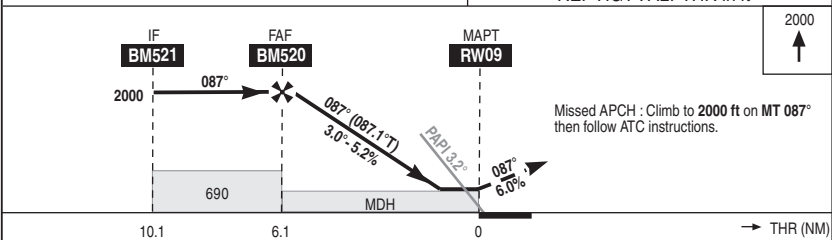
VAR
0°E (20)

- (1) OCH LNAV
- (2) OCH CIRCLING

Radar vectoring for initial approach,
see MIAC 4 LFBM HMSR.
Interception sector defined by RDL 057°
and RDL 117° to join BM521



REF HGT : ALT THR in ft



CAT	LNAV			CIRCLING (1) (2)		DIST RW09	NM	5	4	3	2
	MDH	RVR	OCH	MDH	VIS						
A	380	1700	375	590	1600						
B				590	1600						
C				640	2400						
D				740	3600						
							HGT	1640	1320	1010	690

Remarks : (1) Increased minima. (2) Forbidden south of RWY and by night.

DIRCAM

09 MONT DE **MARSAN** LFBM
 DATA RADAR INS GNSS RWY 09

31 DEC 2020

TABLE FOR DATA INDICATOR		LFBM INS GNSS RWY09 - MAG VAR 0.4°E (20)									
N° SEQ	CODING	IDENT	COORDINATES		TYPE	DIST (NM)	MAG TRACK (TRUE TRACK) (°)	TURN	MIN HGT or LEVEL (FT)	MAX HGT or LEVEL (FT)	MAX IAS (KT)
10	CF	BM521	43°54'08.1"N	000°45'53.8"W	FO		087		2000		250
20	TF	BM520	43°54'20.3"N	000°40'22.3"W	FO	4,0			2000		
30	TF	RW09	43°54'38.59N	000°31'54.35"W	FO	6,1					
40	CH						087		2000		

NATIONAL FRA INSTRUMENT APPROACH

10 MONT DE MARSAN LFBM TACAN / ILS RWY 27

ALT AD : 203 THR : 197

31 DEC 2020

APP : 142.450 - 375.100 - 344.175 - 362.300
TWR : 142.750 - 282.350

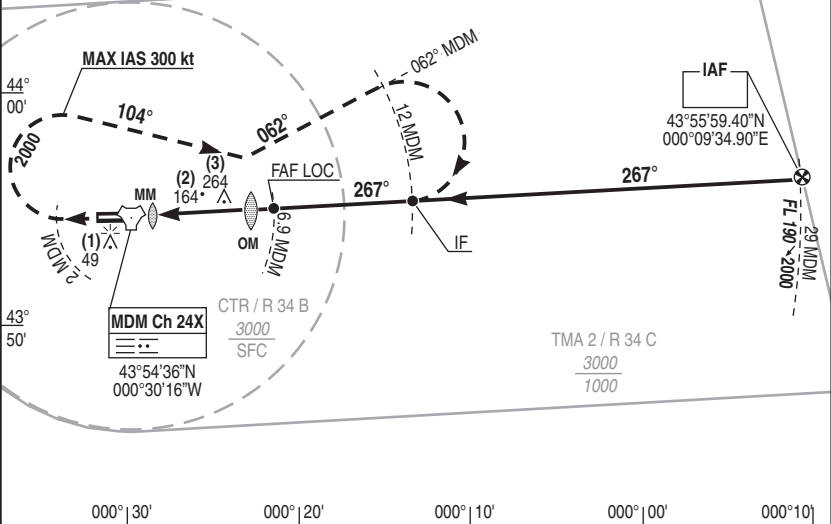
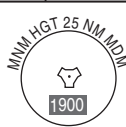
ILS : MDM 110.5

RDH : 52

VAR 0°E (20)

- (1) OCH ILS
- (2) OCH LOC
- (3) OCH CIRCLING

MOCH



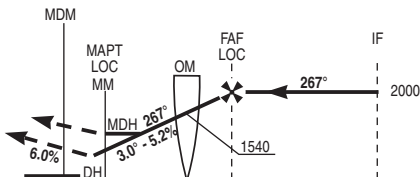
000°|30' 000°|20' 000°|10' 000°|00' 000°|10'

ILS true heading : 267.23

REF HGT : ALT THR in ft



Missed APCH : Climb and maintain RWY axis to 2000 ft QFE. At 2 MDM turn right MT 104° to intercept RDL 062° MDM (062° MT). At 12 MDM turn RIGHT for new presentation.



TAC ← (NM)
DTHR ← (NM)

1.3	5.4	6.9	12
0.6	4.7	6.2	11.3

CAT	ILS (1)			LOC			CIRCLING (2) (3)			ILS - TACAN					
	DH	RVR	OCH	MDH	RVR	OCH	MDH	VIS	OCH	NM	6	5	4	3	2
A	250	800	146	420	1200	414	770	1600	764	6	5	4	3	2	
B								1600		HGT	1730	1410	1100	780	460
C								2400							
D/E								3600							

Remarks : (1) Increased minimums due to technical - ops reason, (2) Forbidden south of RWY, (3) Circling by day only. DIRCAM

TACAN / ILS RWY 27

CHG : VAR

10 MONT DE MARSAN LFBM

NATIONAL FRA INSTRUMENT APPROACH

ALT AD : 203 DTHR : 197

31 DEC 2020

11 MONT DE MARSAN LFBM SRA / ILS or LOC RWY 27

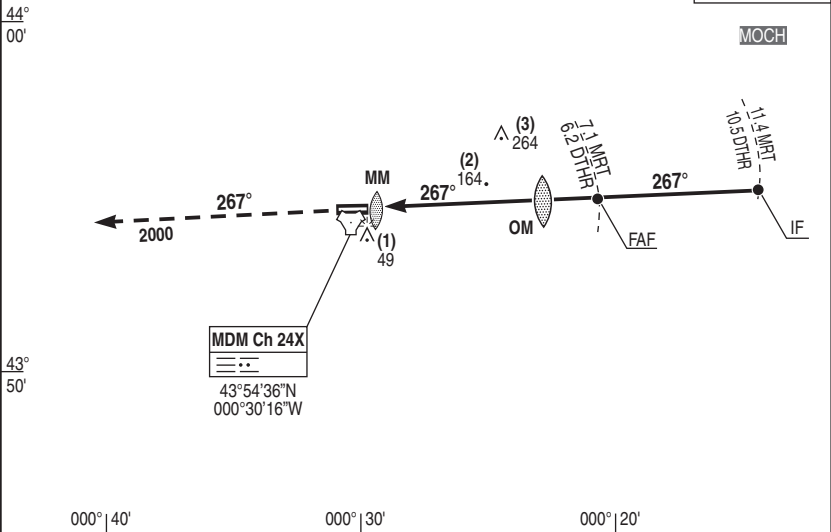
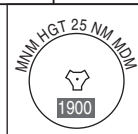
APP : 142.450 - 375.100 - 344.175 - 362.300
TWR : 142.750 - 282.350

ILS : MDM 110.5
≡ ≡ ≡

RDH : 52

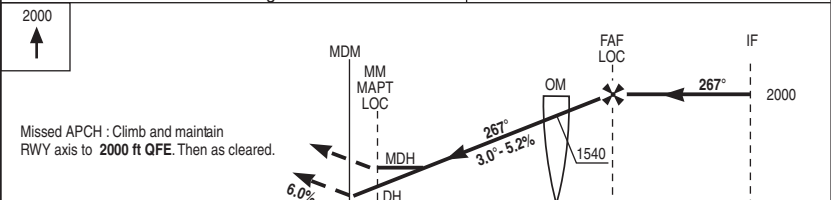
VAR 0°E (20)

- (1) OCH ILS
- (2) OCH LOC
- (3) OCH CIRCLING



000° | 40' 000° | 30' 000° | 20'

ILS true heading : 267.23 REF HGT : ALT DTHR in ft



DTHR	← (NM)	0.6	4.7	6.2	10.5
MRT	← (NM)	1.5	5.6	7.1	11.4

CAT	ILS (1)			LOC			CIRCLING (2) (3)			PMR/LOC				
	DH	RVR	OCH	MDH	RVR	OCH	MDH	VIS	OCH	NM	6	5	4	3
A	250	800	146	420	1200	414	770	1600	764	1670	1350	1040	720	
B								1600						
C								2400						
D/E								3600						

Remarks : (1) Increased minimums due to technical – ops reason, (2) Forbidden south of RWY, (3) Circling by day only. DIRCAM

SRA / ILS or LOC RWY 27 CHG : VAR 11 MONT DE MARSAN LFBM

NATIONAL FRA INSTRUMENT APPROACH

12 MONT DE MARSAN LFBM TACAN PAR RWY 27

ALT AD : 203 DTHR : 197

31 DEC 2020

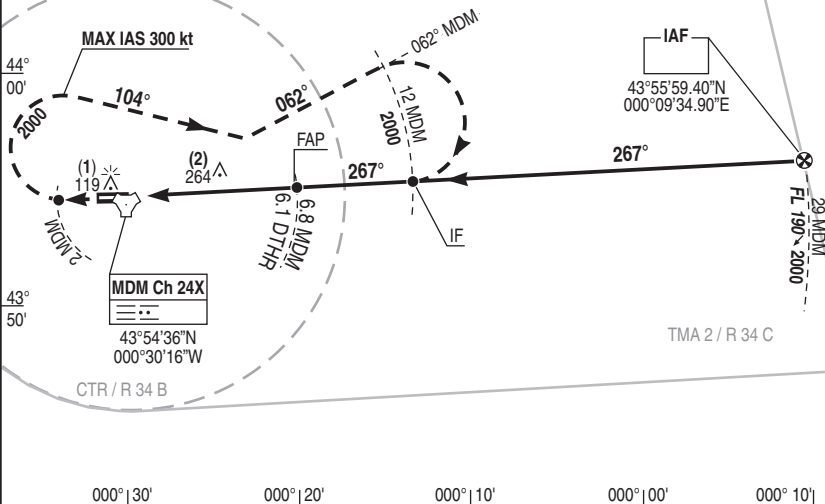
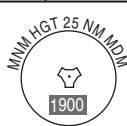
APP : 142.450 - 375.100 - 344.175 - 362.300
TWR : 142.750 - 282.350

PAR RDH : 52 VAR 0°E (20)

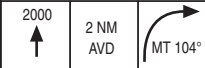
(1) OCH PAR
(2) OCH CIRCLING

OAT ONLY

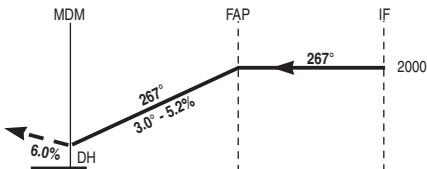
MOCH



REF HGT : ALT DTHR in ft



Missed APCH : Climb and maintain RWY axis to 2000 ft QFE. At 2 TAC MDM turn right MT 104° to intercept RDL 062° MDM (MT 062°). At 12 TAC MDM turn right for new presentation.



TAC ← (NM)
DTHR ← (NM)

6.8 12
6.1 11.3

CAT	PAR (1)			CIRCLING (2) (3)		
	DH	RVR	OCH	MDH	VIS	OCH
A	250	800	218	770	1600	764
B					1600	
C					2400	
D/E					3600	

Remarks : (1) Increased minimums due to technical – ops reason, (2) Forbidden south of RWY, (3) Circling by day only. DIRCAM

TACAN PAR RWY 27

CHG : VAR

12 MONT DE MARSAN LFBM

NATIONAL FRA INSTRUMENT APPROACH

ALT AD : 203 DTHR : 197

31 DEC 2020

13 MONT DE MARSAN LFBM
SRA / PAR RWY 27

APP : 142.450 - 375.100 - 344.175 - 362.300
TWR : 142.750 - 282.350

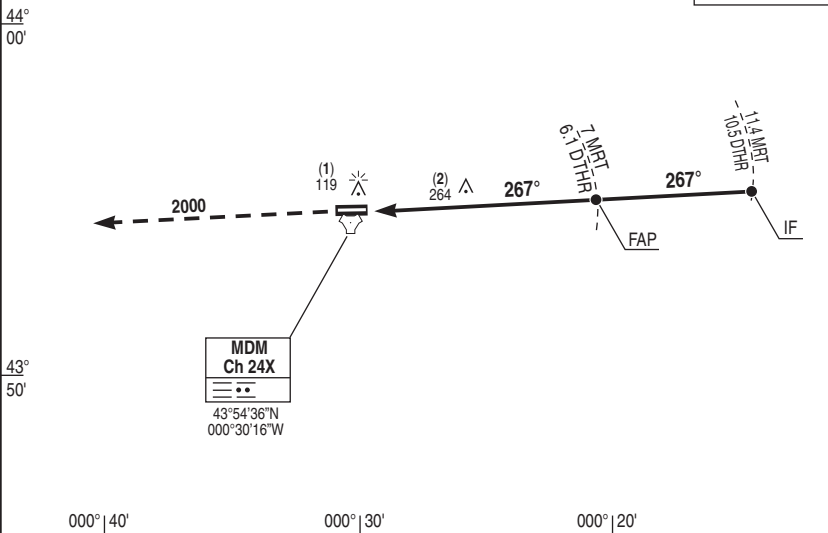
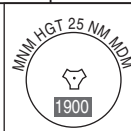
RDH : 52

VAR
0°E (20)

(1) OCH PAR
(2) OCH CIRCLING

OAT ONLY

MOCH

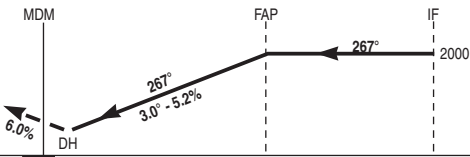


REF HGT : ALT DTHR in ft

2000



Missed APCH : Climb and maintain
RWY axis to 2000 ft QFE.
Then as cleared.



DTHR ← (NM)
MRT ← (NM)

6.1 10.5
7 11.4

CAT	PAR (1)			CIRCLING (2) (3)		
	DH	RVR	OCH	MDH	VIS	OCH
A	250	800	218	770	1600	764
B					1600	
C					2400	
D/E					3600	

Remarks : (1) Increased minimums due to technical – ops reason, (2) Forbidden south of RWY, (3) Circling by day only.

DIRCAM

SRA / PAR RWY 27

CHG : VAR

13 MONT DE MARSAN LFBM

NATIONAL FRA INSTRUMENT APPROACH

14 MONT DE MARSAN LFBM TACAN RWY 27

ALT AD : 203 DTHR : 197

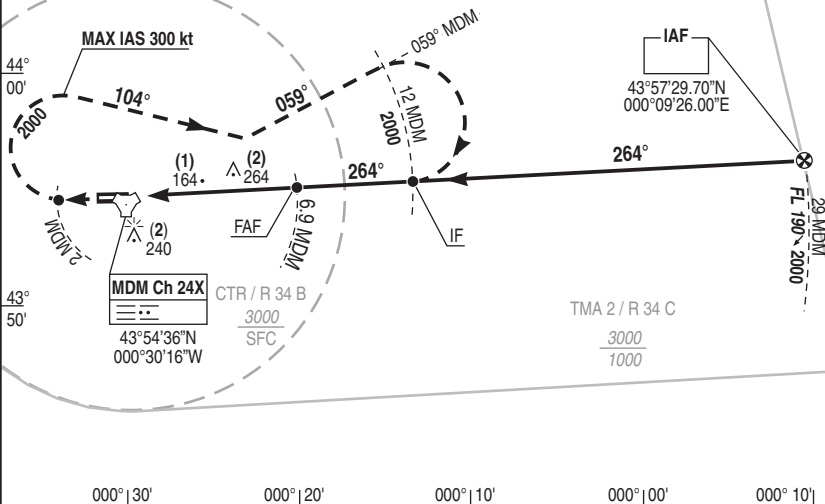
31 DEC 2020

APP : 142.450 - 375.100 - 344.175 - 362.300
TWR : 142.750 - 282.350

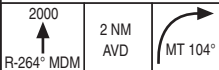
VAR
0°E (20)

(1) OCH TACAN
(2) OCH CIRCLING

MOCH

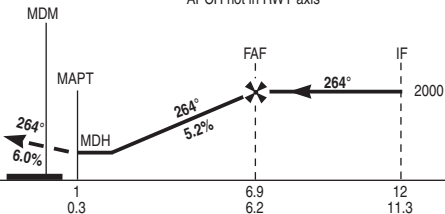


REF HGT : ALT DTHR in ft



APCH not in RWY axis

Missed APCH : Climb and maintain RDL 264° TAC MDM (MT 264°) to 2000 ft QFE. At 2 TAC MDM turn right MT 104° to intercept RDL 059° TAC MDM (MT 059°). At 12 TAC MDM turn right for new presentation.



TAC ← (NM)
DTHR ← (NM)

CAT	TACAN			CIRCLING (1)		
	MDH	RVR	OCH	MDH	VIS	OCH
A					1600	
B	420	1200	414	770	1600	764
C					2400	
D/E					3600	

Remarks : (1) Forbidden south of RWY, circling by day only.

DIRCAM

TACAN RWY 27

CHG : VAR

14 MONT DE MARSAN LFBM

NATIONAL FRA INSTRUMENT APPROACH

ALT AD : 203 DTHR : 197

31 DEC 2020

15 MONT DE MARSAN LFBM INS GNSS RWY 27

APP : 142.450 - 375.100 - 344.175 - 362.300

VAR
0°E (20)

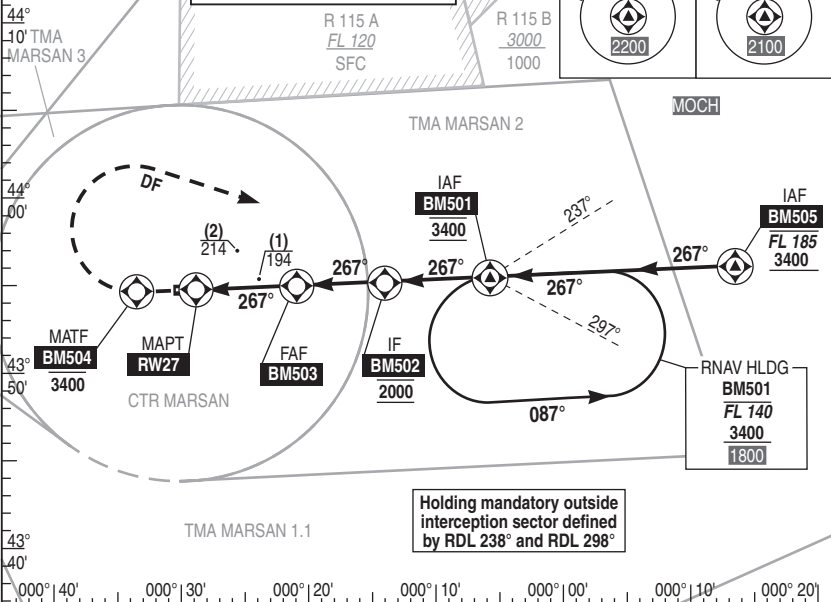
TWR : 142.750 - 282.350

- (1) OCH LNAV
- (2) OCH CIRCLING

**PROCEDURE RESTRICTED TO
AIRCRAFTS ALLOWED ONLY**

R 115 A
FL 120
SFC

R 115 B
3000
1000

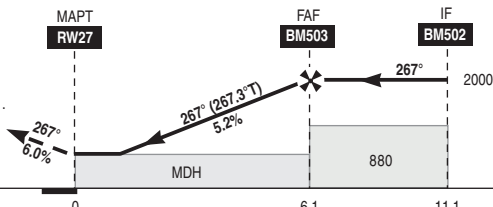


**Holding mandatory outside
interception sector defined
by RDL 238° and RDL 298°**

REF HGT : ALT DTHR in ft



Missed APCH : Climb to 3400 ft QFE
inbound BM504, then turn right direct to BM501.



DTHR (NM)

CAT	LNAV			CIRCLING (1) (2)		
	MDH	RVR	OCH	MDH	VIS	OCH
A	440	1300	440	550	1600	509
B				550	1600	
C				600	2400	
D				700	3600	

Remarks : (1) Increased minimums. (2) Forbidden south of RWY and by night. VSS checked.

DIRCAM

31 DEC 2020

TABLE FOR DATA INDICATOR				LFBM INS GNSS RWY27 - MAG VAR 0.4°E (20)						
N° SEQ	CODING	IDENT	COORDINATES	TYPE	DIST (NM)	MAG TRACK (TRUE TRACK) (°)	TURN	MIN HGT or LEVEL (FT)	MAX HGT or LEVEL (FT)	MAX IAS (KT)
10	HM	BM501	43°55'31.3"N 000°05'38.3"W	FO		267 (267)	L	3400	FL140	
10	IF	BM505	43°56'06.2"N 000°13'43.1"E	FO				3400	FL185	
20	TF	BM502	43°55'15.3"N 000°13'55.9"W	FO	20,0			2000		
10	IF	BM501	43°55'31.3"N 000°05'38.3"W	FO				3400		
20	TF	BM502	43°55'15.3"N 000°13'55.9"W	FO	6,0			2000		
10	IF	BM502	43°55'15.3"N 000°13'55.9"W	FO				2000		
20	TF	BM503	43°55'01.5"N 000°20'50.6"W	FO	5,0			2000		
30	TF	RW27	43°54'44.07"N 000°29'18.50"W	FO	6,1	267 (267.3)				
40	TF	BM504	43°54'35.3"N 000°33'27.2"W	FO	3,0				3400	
50	DF	BM501	43°55'31.3"N 000°05'38.3"W	FO			R	3400		

LEGEND : TF : Track to a Fix DF : Direct to a Fix CF : Course to a Fix CH : Course to a Height FO : Fly Over FB : Fly By

NATIONAL FRA
INSTRUMENT DEPARTURE

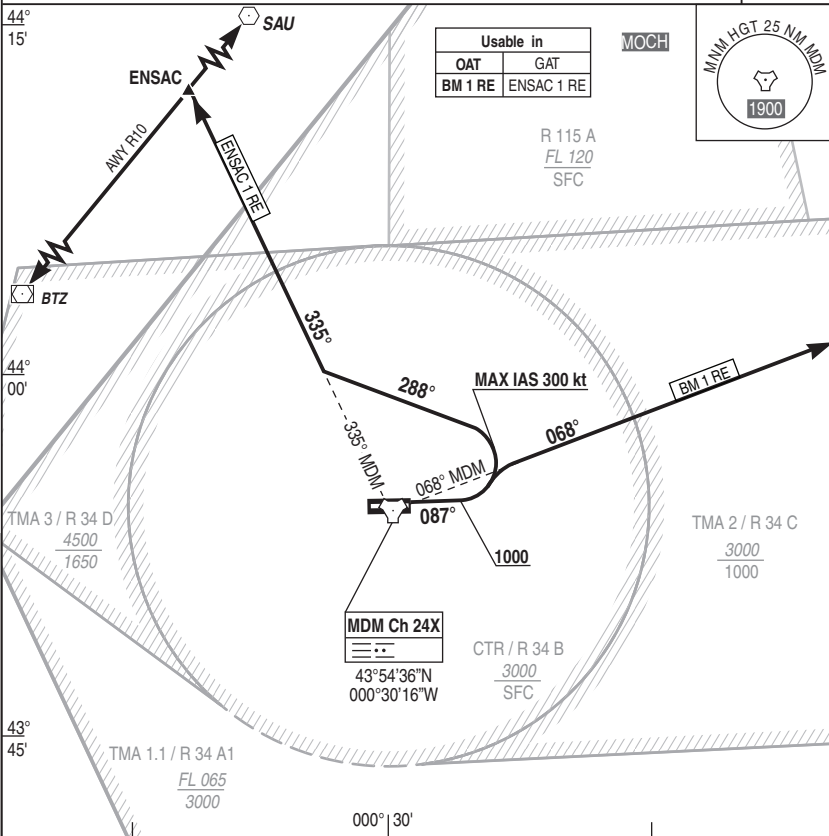
SID 01 MONT DE MARSAN LFBM
DEPARTURES RWY 09

ALT AD : 203 THR : 164

31 DEC 2020

APP : 142.450 - 375.100 - 344.175 - 362.300
TWR : 142.750 - 282.350

VAR
0°E (20)



DEPARTURE BM 1 RE : Climb MT 087°. At 1000ft, turn left MT 038° to intercept and follow RDL 068° MDM (MT 068°) until hand over.

DEPARTURE ENSAC 1 RE : Climb MT 087°. At 1000ft, turn left MT 288° to intercept and follow RDL 335° MDM (MT 335°) to ENSAC.

Communication failure : 7600 and apply french national regulation.

DIRCAM

NATIONAL FRA
INSTRUMENT DEPARTURE

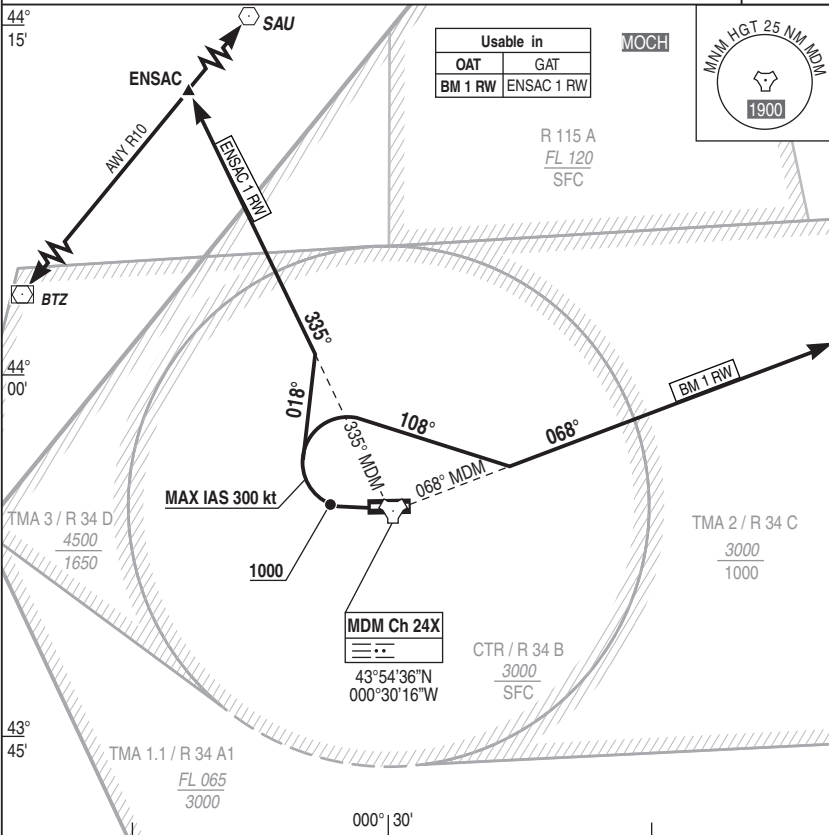
SID 02 MONT DE MARSAN LFBM
DEPARTURES RWY 27

ALT AD : 203 THR : 194

31 DEC 2020

APP : 142.450 - 375.100 - 344.175 - 362.300
TWR : 142.750 - 282.350

VAR
0°E (20)



REF HGT : ALT THR in ft

DEPARTURE BM 1 RW : Climb MT 267°. At 1000ft, turn right MT 108° to intercept and follow RDL 068° MDM (MT 068°) until hand over.

DEPARTURE ENSAC 1 RW : Climb MT 267° (1). At 1000ft, turn right MT 018° to intercept and follow RDL 335° MDM (MT 335°) to ENSAC.

(1) ATS climb slope : 10%. If not possible to maintain this slope, advise ATC when starting up and expect a 8.75% climb slope.

Communication failure : 7600 and apply french national regulation.

DIRCAM

DEPARTURES RWY 27

CHG : VAR

SID 02 MONT DE MARSAN LFBM