

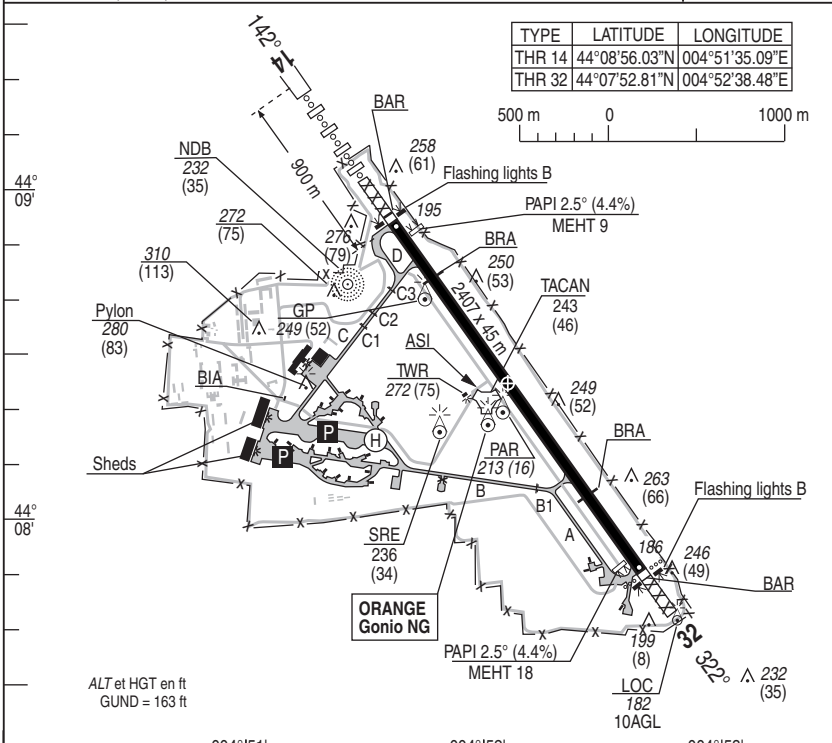
NATIONAL FRA AERODROME CHART

03 NOV 2022

01 ORANGE CARITAT LFMO

ALT AD : 197 (7 hPa)

VAR : 2°E (20)



RWY	LIGHTING		DECLARED DISTANCES				Surface Strength	MINIMUMS TKOF (RVR in m)				
	APPROACH	RWY	TORA	TODA	ASDA	LDA		CAT A	B	C	D	E
14	HI OTAN 900m	LHI / LIL	2407	2407	2407	2407	Paved	550			550	
32	NIL	LHI / LIL	2407	2407	2407	2407	14 R/B/W/T	550			550	

OMNIDIRECTIONAL DEPARTURES

RWY 14 (Alt THR 194): Climb **MT 157°** until **3.9 ORG** then direct route up to enroute safety altitude.

RWY 32 (Alt THR 186): Climb **(1) MT 322°** until **3.9 ORG** then direct route up to enroute safety altitude.

(1) Théorique climb gradient **10.6 %** (2) until 100 ft then 8.75 %.

(2) Determining obstacle : Vegetation of 73 ft at 142 m from DER and at 187m right of runway axis (Minimum climb gradient 8.75 %).

MARKINGS - LIGHTINGS :

- Day lighting : HI APP line (NATO type, 900 m)RWY 14- BI RWY 32

- Flashing lights and PAPI RWY 14/32. TWY AST. PAPI 14 and 32 out of norm, use prohibited expect ACFT authorized by their command.

DIRCAM

OTHER INFORMATIONS:

- Presence of BRA and BAR at each end of RWY
- Slippery RWY.

PARTICULAR INSTRUCTIONS:

- Descent and climb for non based ACFT are submitted to Duty officer permission tel: 811 115 5611 or 04 90 11 56 11.
- When A/D is green and ceiling <1500 ft, low level departure only after instrument procedure final.
- LANDING : PPR mandatory, Number to filed in case 18 FPL : Tel Flight director : 811 115 5700 or 04 90 11 57 00.

REFUELING:

- F34 - Oxygen 1OOLL : prior notice 1 week before

ATS HOR:

- MON-THU : 0700-1600 - FRI : 0700-1400 - SAT, SUN, HOL : O/R before 1400 the last previous working day
HN : O/R before 1600 (SUMMER -1 Hr).

DIRCAM

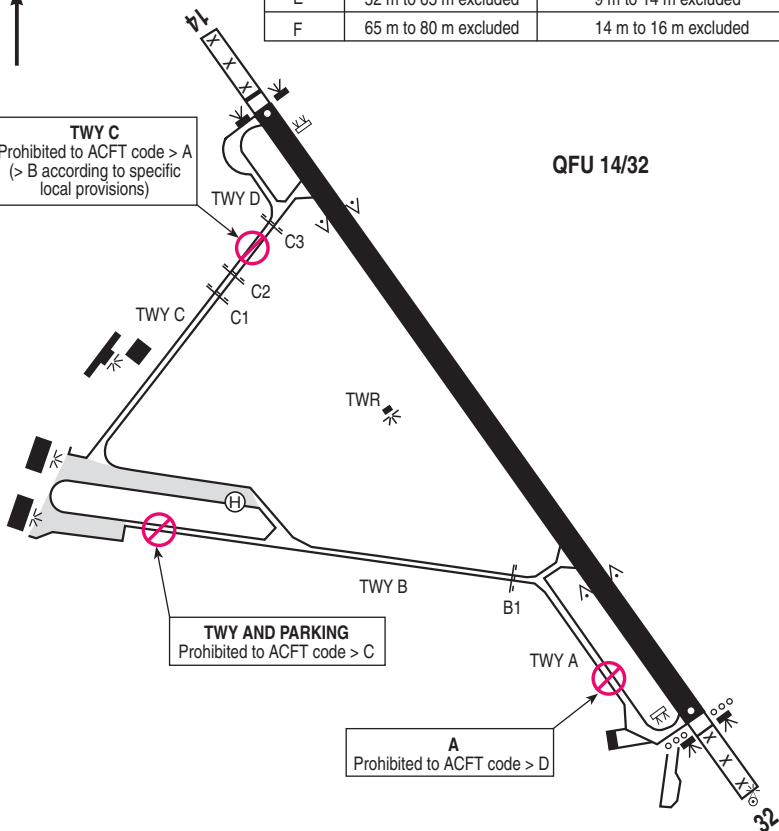


Code letter	Wingspan	Overall width of main landing gear. Distance between exterior edge of main landing gear wheels.
A	<15 m	< 4,5 m
B	15 m to 24 m excluded	4,5 m to 6 m excluded
C	24 m to 36 m excluded	6 m to 9 m excluded
D	36 m to 52 m excluded	9 m to 14 m excluded
E	52 m to 65 m excluded	9 m to 14 m excluded
F	65 m to 80 m excluded	14 m to 16 m excluded



TWY C
Prohibited to ACFT code > A
(> B according to specific local provisions)

QFU 14/32



TWY AND PARKING
Prohibited to ACFT code > C

A
Prohibited to ACFT code > D

VISUAL ARR & DEP

ALT AD : 197 (7 hPa)

06 OCT 2022

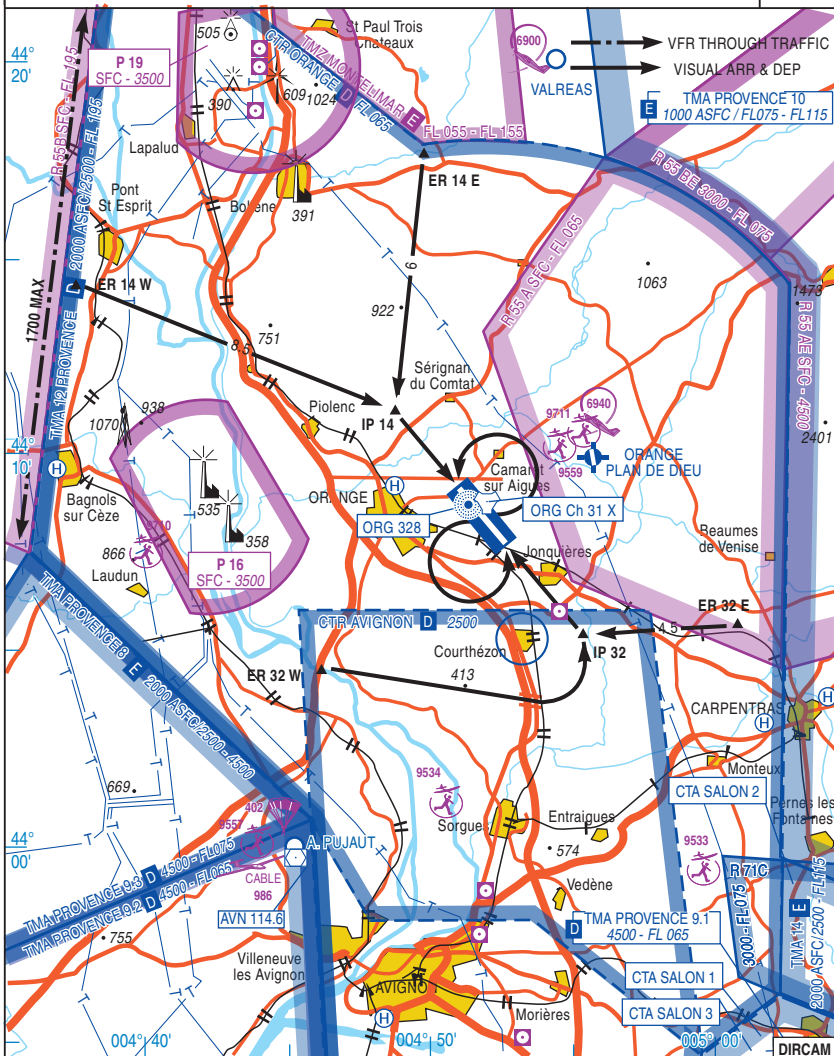
02 ORANGE CARITAT LFMO

JET RWY14 & 32

APP : 118.925 - 299.775 (Recovery)
 TWR : 128.950 - 388.775 - 257.800 - 122.100

AD FAF restricted use
 5 Km E from ORANGE
 TEL : 04.90.11.57.00

VAR
 2°E
 (20)



CHG : Revision.

02 ORANGE CARITAT LFMO

VISUAL ARR & DEP INSTRUCTIONS

Airspace restriction :

Refer to AIP FRANCE or french defense 1/1.000.000 aeronautical chart instructions.

ARRIVAL

Contact APP 3 MIN before entering CTR.

QFU 32 ARRIVAL : avoid flying over COURTHEZON village.

Radio contact mandatory on following points :**RWY 14 :** Entry points

ER 14 E : 348° / 9 NM TACAN ORG.

ER 14 W : 296° / 11,6 NM TACAN ORG.

RWY 32 : Entry points

ER 32 E : 114° / 7,7 NM TACAN ORG.

ER 32 W : 223° / 6 NM TACAN ORG.

HEIGHTS AND SPEED

Fighters : from entry point to IP 350 kt / 2000 ft QFE.

Others : from entry point to IP 1500 ft QFE.

BREAK left : Fighters 1500 ft QFE.

Others : 1000 ft QFE.

IP 14 : 2,5 NM from threshold, on center line (3,2 NM TACAN).

IP 32 : 3 NM from threshold, on center line (3,7 NM TACAN).

DEPARTURE**Whatever RWY in use :** Do not overpass 800 ft QFE till end of RWY.

Shut down after burner as soon as possible.

Maintain 2000 ft QFE minimum till ORANGE CTR limits.

RWY 14 : After TKOF in order to avoid overfly JONQUIERES and to limit noise nuisances

Fly heading 158°

West departure : At 3,5 NM TACAN, turn and fly south east round COURTHEZON.East departure : Fly heading 088° turn and fly south round JONQUIERES.**Without CTR procedures :**

Departure and arrival possible without Orange airspace area active in OAT V flight or VFR in those conditions :

Airfield Blue, no TGO, no going around for training, no dep/arr close formation, no failures exercices, Squawk 7000.

Visual pattern runway 32 :Departure on axis 2000 ft QFE then omnidirectionnal departure.Arrival : descend 1500 ft QFE before lateral CTR limits.

By the ouest, inbound Pont Saint Esprit direct left hand downwind 32.

By the east, inbound Carpentras then overhead ORG TACAN to join left hand downwind 32.

Visual pattern runway 14 :Departure by avoiding Avignon CTR or direct left hand downwind 32 passing 500 ft inbound 2000 ft QFE.Arrival : descend 1500 ft QFE before lateral CTR limits.

By the ouest, inbound Pont Saint Esprit direct straight in approach 14.

By the east, inbound Carpentras to join left hand downwind 14.

Silent Slot procedure : Every day from 11h30Z to 12h30Z (-1h during summer time) : fighters departures will be only according to the flight director. Arrivals are possible only by straight in approach.

APP : 299.775 (Recovery) (1)

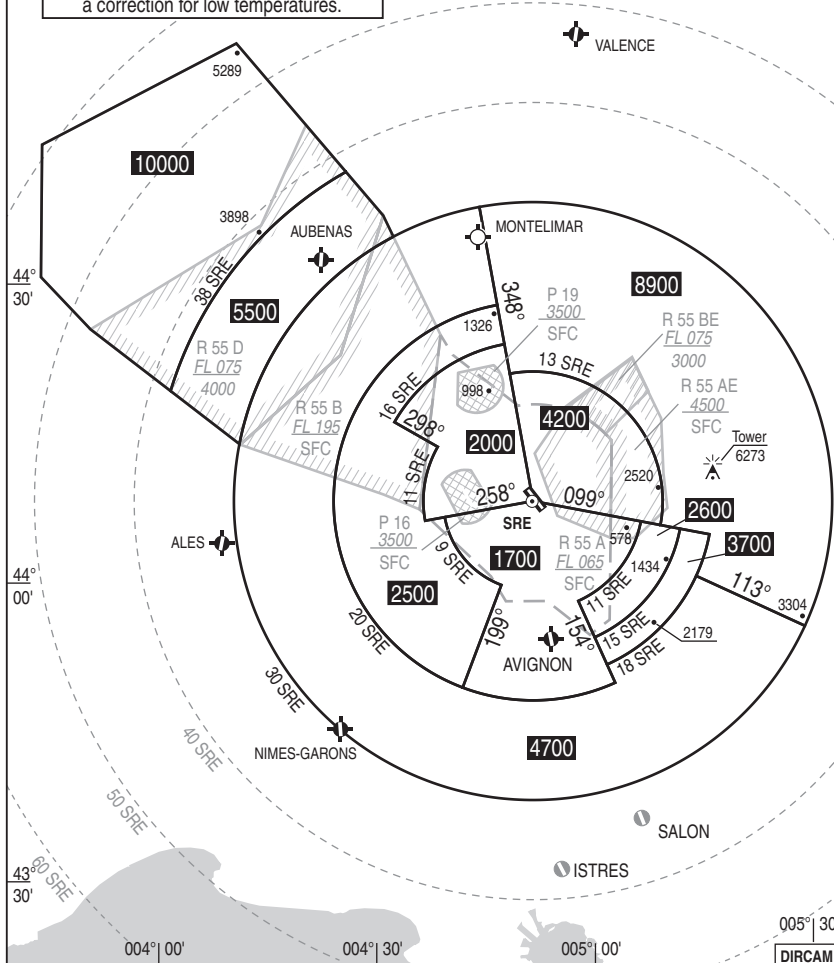
TWR : 128.950 - 388.775 (1) - 257.800 - 122.100

(1) Reserved to MIL

VAR
2°E
(20)

COMMUNICATION FAILURE : Apply french national regulation.

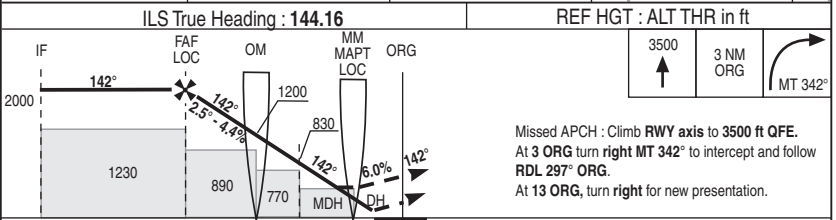
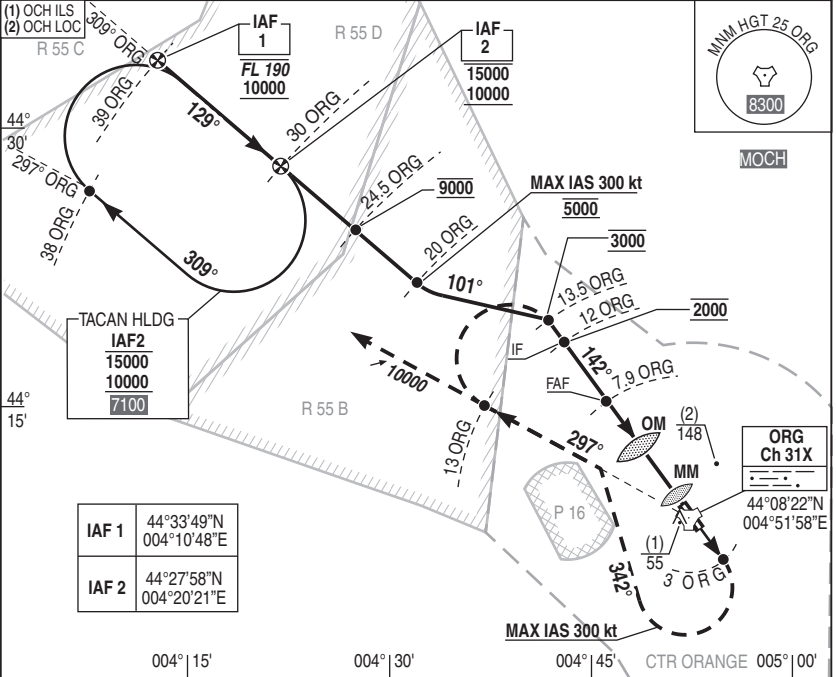
The published minimum heights integrate
a correction for low temperatures.



NATIONAL FRA
INSTRUMENT APPROACH
ALT AD : 197 THR : 194

06 OCT 2022 HPMA TACAN / ILS or LOC RWY 14
05 ORANGE CARITAT LFMO

APP : 299.775 (Recovery)	ILS : ORG 109.9	RDH : 57	VAR 2°E (20)
TWR : 128.950 - 388.775 - 257.800 - 122.100			



CAT	ILS (1)			LOC			TACAN
	DH	RVR	OCH	MDH	RVR	OCH	
A	250	1000	154	400	1100	394	NM 7 6 5 4 3 2
B							HGT 1760 1490 1230 960 690 420
C							
D/E							

On clearance:
Missed APCH : Climb RWY axis to 3500 ft QFE. At 3 ORG turn right MT 342° to intercept and follow RDL 297° ORG. At 13 ORG, continue climb to 10000 ft QFE.

NATIONAL FRA INSTRUMENT APPROACH

ALT AD : 197 THR : 195

06 OCT 2022

06 ORANGE CARITAT LFMO
RADAR / ILS RWY14

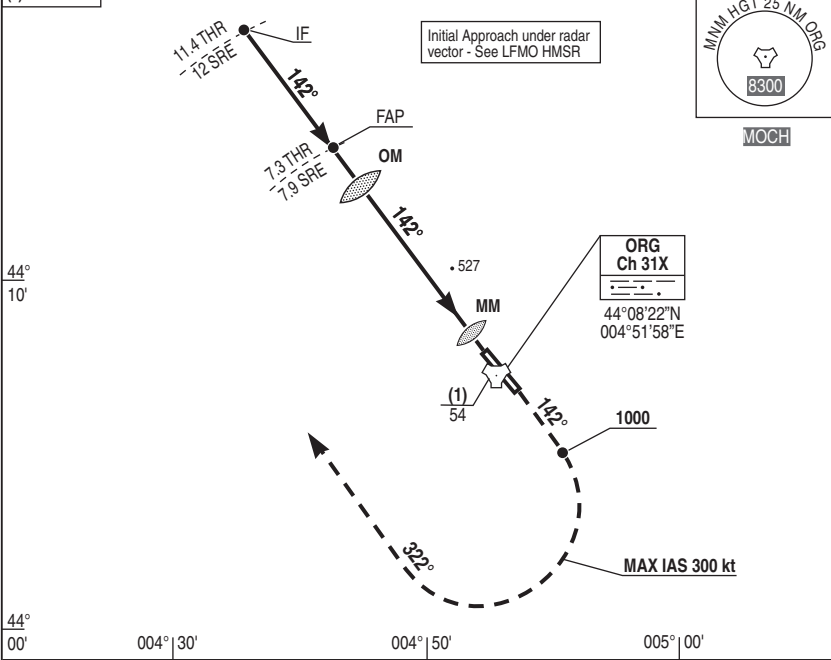
APP : 299.775 (Recovery)
TWR : 128.950 - 388.775 - 122.100 - 257.800

ILS : ORG 109.9

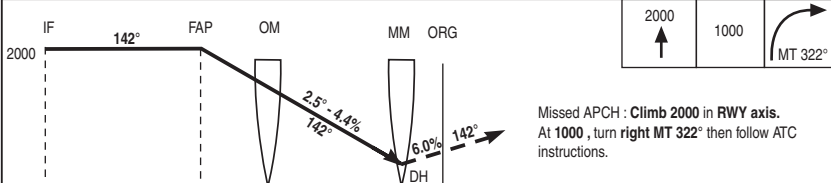
RDH : 57

VAR
2°E (20)

(1) OCH ILS



REF HGT : ALT THR in ft



IF	FAP	OM	MM	ORG	
12	7.9	4.9	1.1		
11.4	7.3	4.3	0.5		

CAT	ILS (1)			CIRCLING		
	DH	RVR	OCH	MDH	VIS	OCH
A	250	1000	153	830	1600	822
B					1600	
C					2400	
D/E					3600	

Remarks : (1) Increased minimums.

DIRCAM

RADAR / ILS RWY14

CHG : Frequency.

06 ORANGE CARITAT LFMO

NATIONAL FRA
 INSTRUMENT APPROACH
 ALT AD : 197 THR : 194

06 OCT 2022

07 ORANGE CARITAT LFMO
 HPMA RADAR / PAR RWY14

APP : 299.775 (Recovery)	RDH : 58	VAR 2°E (20)
TWR : 128.950 - 388.775 - 257.800 - 122.100		

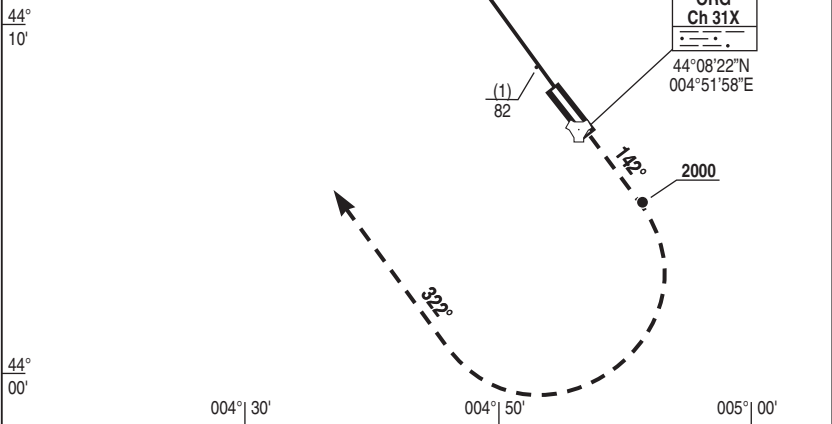
(1) OCH PAR

Initial Approach under radar vector - See LFMO HMSR

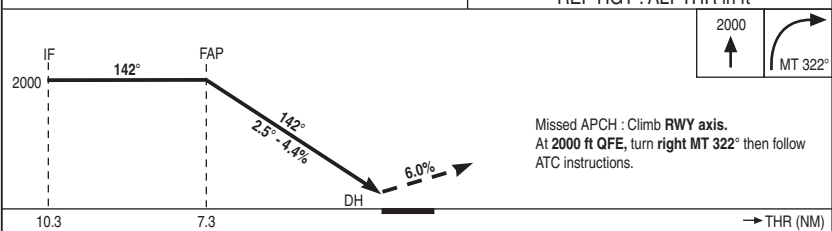
OAT ONLY



MOCH



REF HGT : ALT THR in ft



CAT	(1)		
	DH	RVR	OCH
A	250	1000	181
B			
C			
D/E			

Remarks : (1) Increased due to operational reason. DIRCAM

NATIONAL FRA INSTRUMENT APPROACH

ALT AD : 197 THR : 194

06 OCT 2022

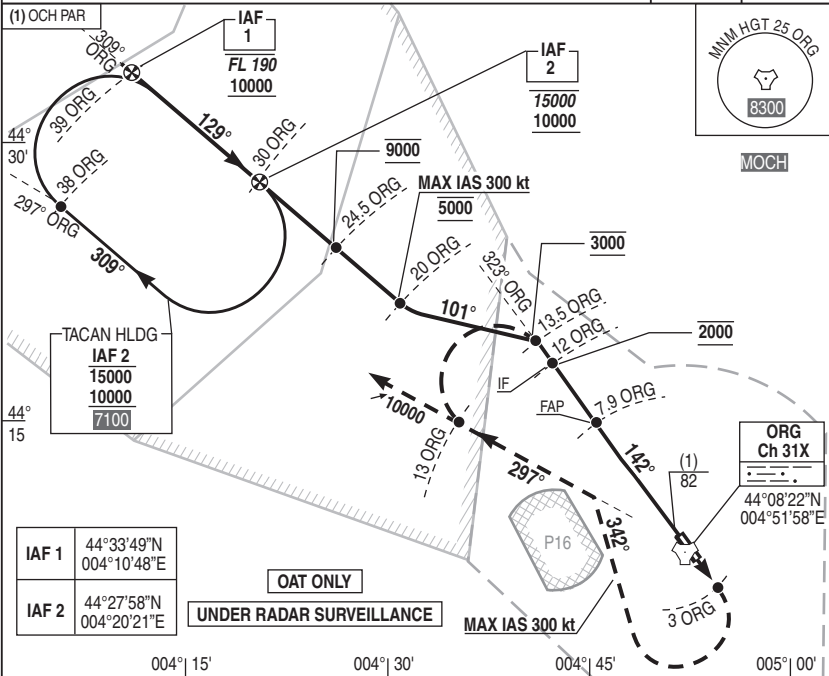
08 ORANGE CARITAT LFMO
HPMA TACAN / PAR RWY14

APP : 299.775 (Recovery)

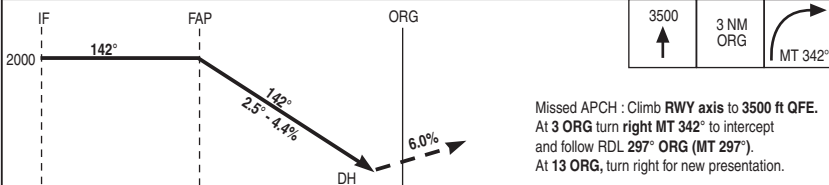
TWR : 128.950 - 388.775 - 257.800 - 122.100

RDH : 58

VAR
2°E (20)



REF HGT : ALT THR in ft



12	7.9
11.4	7.3

→ TAC (NM)
→ THR (NM)

CAT	PAR (1)		
	DH	RVR	OCH
A	250	1000	181
B			
C			
D/E			

On clearance:
Missed APCH : Climb RWY axis to 3500 ft QFE.
At 3 ORG turn right MT 342° to intercept and follow RDL 297° ORG (MT 298°).
At 13 ORG, continue climb to 10000 ft QFE.

Remarks : (1) Increased minimums.

DIRCAM

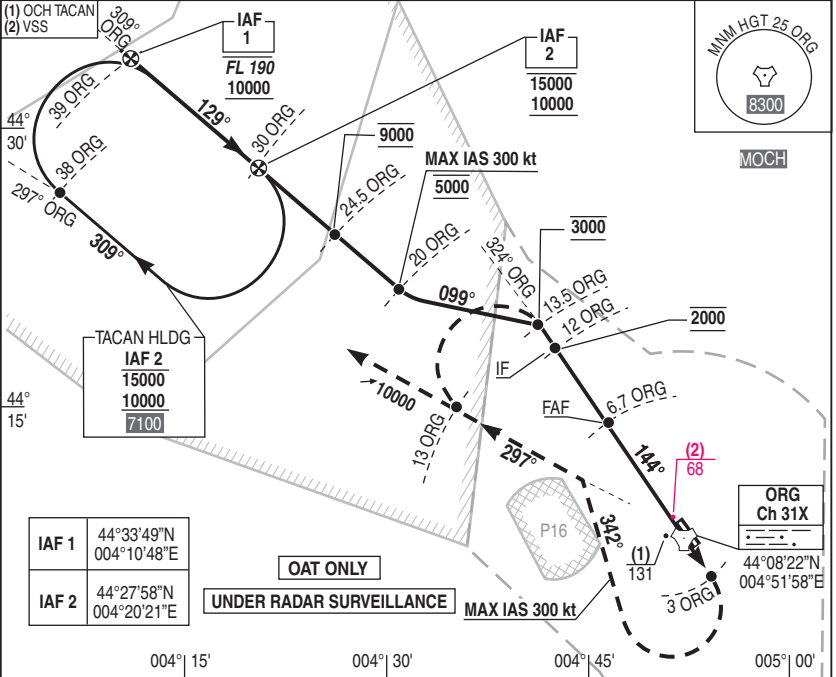
NATIONAL FRA INSTRUMENT APPROACH

ALT AD : 197 THR : 194

06 OCT 2022

09 ORANGE CARITAT LFMO
HPMA TACAN / TACAN RWY14

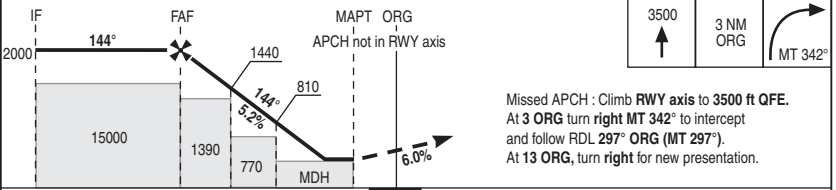
APP : 299.775 (Recovery)	VAR 2°E (20)
TWR : 128.950 - 388.775 - 257.800 - 122.100	



IAF 1	44°33'49"N 004°10'48"E
IAF 2	44°27'58"N 004°20'21"E

OAT ONLY
UNDER RADAR SURVEILLANCE

REF HGT : ALT THR in ft



Missed APCH : Climb RWY axis to 3500 ft QFE.
At 3 ORG turn right MT 342° to intercept and follow RDL 297° ORG (MT 297°).
At 13 ORG, turn right for new presentation.

12	6.7	5	3	1	
11.4	6.1	4.4	2.4	0.4	

CAT	TACAN			TACAN	6	5	4	3	2
	MDH	RVR	OCH						
A	380	1000	377						
B									
C									
D/E									

On clearance:
Missed APCH : Climb RWY axis to 3500 ft QFE.
At 3 ORG turn right MT 342° to intercept and follow RDL 297° ORG (MT 297°).
At 13 ORG, continue climb to 10000 ft QFE.

Remarks : (2) VSS crossed. DIRCAM

NATIONAL FRA
INSTRUMENT APPROACH

ALT AD : 197 THR : 186

06 OCT 2022

10 ORANGE CARITAT LFMO
HPMA RADAR / PAR RWY32

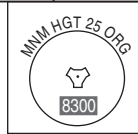
APP : 299.775 (Recovery)

TWR : 128.950 - 388.775 - 257.800 -122.100

RDH : 50

VAR
2°E (20)

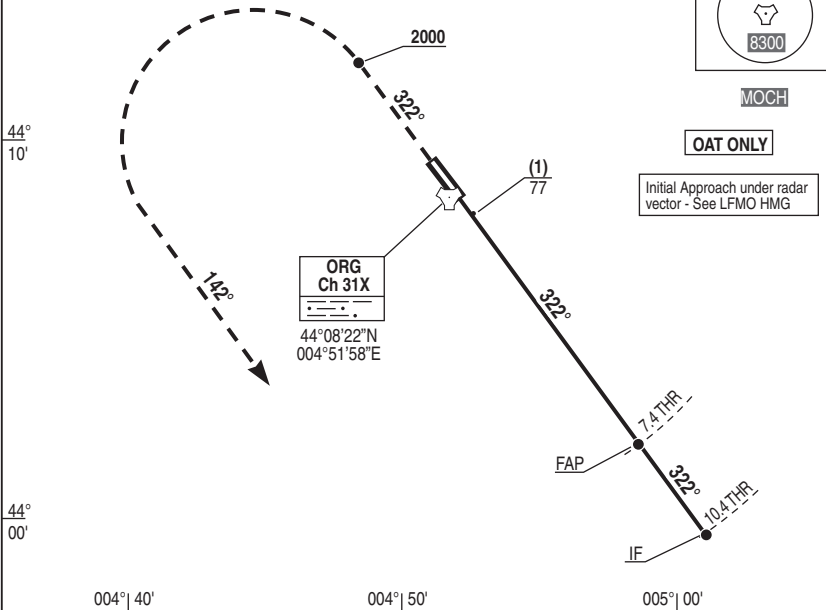
(1) OCH PAR



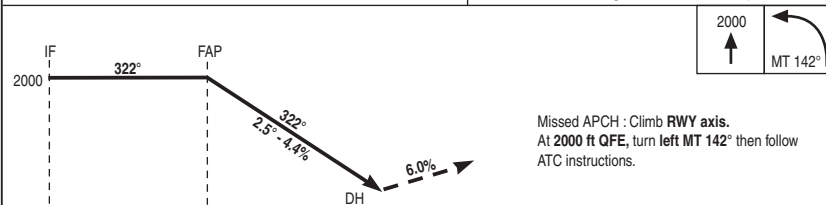
MOCH

OAT ONLY

Initial Approach under radar
vector - See LFMO HMG



REF HGT : ALT THR in ft



→ THR (NM)

CAT	(1)		
	DH	RVR	OCH
A	250	1300	171
B			
C			
D/E			

Remarks : (1) Increased minimum.

DIRCAM

HPMA RADAR / PAR RWY32

CHG : Frequency.

10 ORANGE CARITAT LFMO

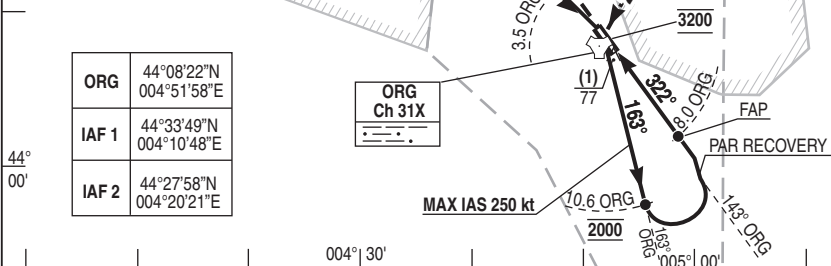
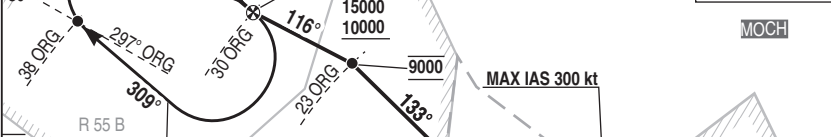
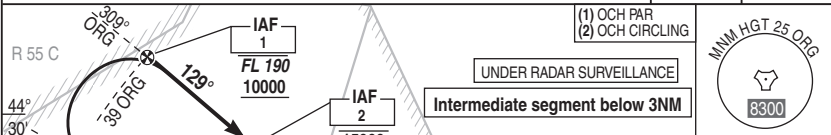
NATIONAL FRA INSTRUMENT APPROACH

ALT AD : 197 THR : 186

06 OCT 2022

11 ORANGE CARITAT LFMO HPMA TACAN / PAR RWY32

APP : 299.775 (Recovery) RDH : 50 VAR 2°E (20)
 TWR : 128.950 - 388.775 - 257.800 - 122.100



ORG	44°08'22"N 004°51'58"E
IAF 1	44°33'49"N 004°10'48"E
IAF 2	44°27'58"N 004°20'21"E

REF HGT : ALT THR in ft



Missed APCH : Climb straight ahead to 2000 QFE.
 At 3.5 ORG, turn right to intercept RDL 028° ORG for a new presentation.

THR (NM) ← ←
 TAC ORG (NM) ← ←

CAT	PAR (1)			CIRCLING		
	DH	RVR	OCH	MDH	VIS	OCH
A	250	1300	171	810	1600	808
B					1600	
C					2400	
D/E					3600	

Remarks : (1) Increased minima. DIRCAM

NATIONAL FRA
 INSTRUMENT APPROACH
 ALT AD : 197 THR : 186

06 OCT 2022

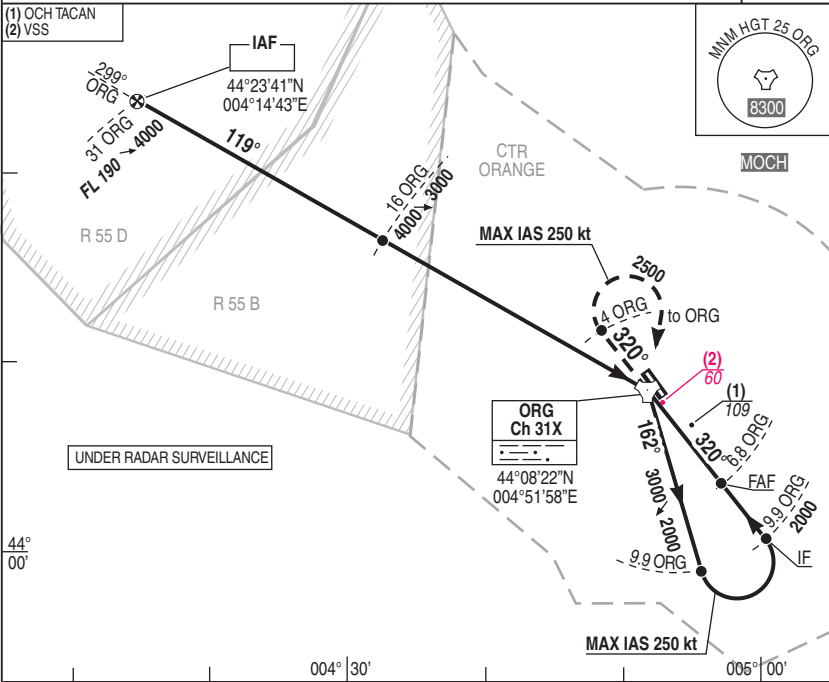
12 ORANGE CARITAT LFMO
 HPMa TACAN / TACAN RWY32

APP : 299.775 (Recovery)

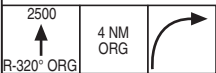
VAR
 2°E (20)

TWR : 128.950 - 388.775 - 257.800 - 122.100

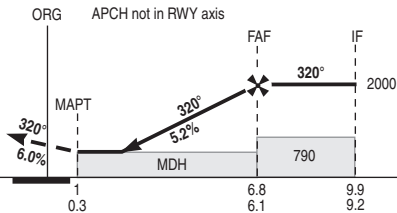
(1) OCH TACAN
 (2) VSS



REF HGT : ALT THR in ft



Missed APCH:
 Climb RDL 320° ORG to 2500 ft QFE
 At 4 ORG turn right to ORG.



TAC ← (NM)
 THR ← (NM)

CAT	TACAN		
	MDH	RVR	OCH
A		1500	
B		1500	
C	360	1600	356
D		1600	

TACAN	6	5	4	3	2
NM	6	5	4	3	2
HGT	1730	1410	1100	780	470

Remarks : (2) VSS crossed.

DIRCAM

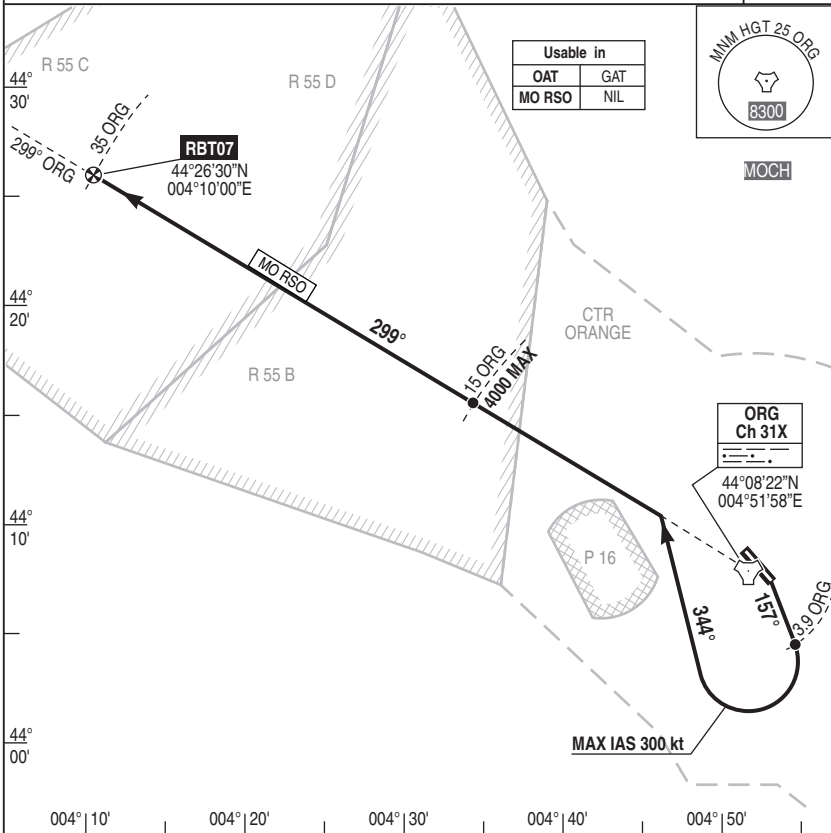
NATIONAL FRA
 INSTRUMENT APPROACH
 ALT AD : 197 THR : 194

SID 01 ORANGE CARITAT LFMO
 DEPARTURE RWY14

06 OCT 2022

APP : 299.775 (Recovery)
 TWR : 128.950 - 388.775 - 257.800 - 122.100

VAR
 2°E (20)



DEPARTURE MO RSO RWY14 : Climb MT 157° up to 4000 MAX. At 3.9 ORG turn RIGHT MT 344° to intercept and follow RDL 299° ORG (MT 299°) to RBT07.

At 15 ORG, climb up to cleared level.

Radio failure : squawk 7600 and apply french national regulation.

DIRCAM

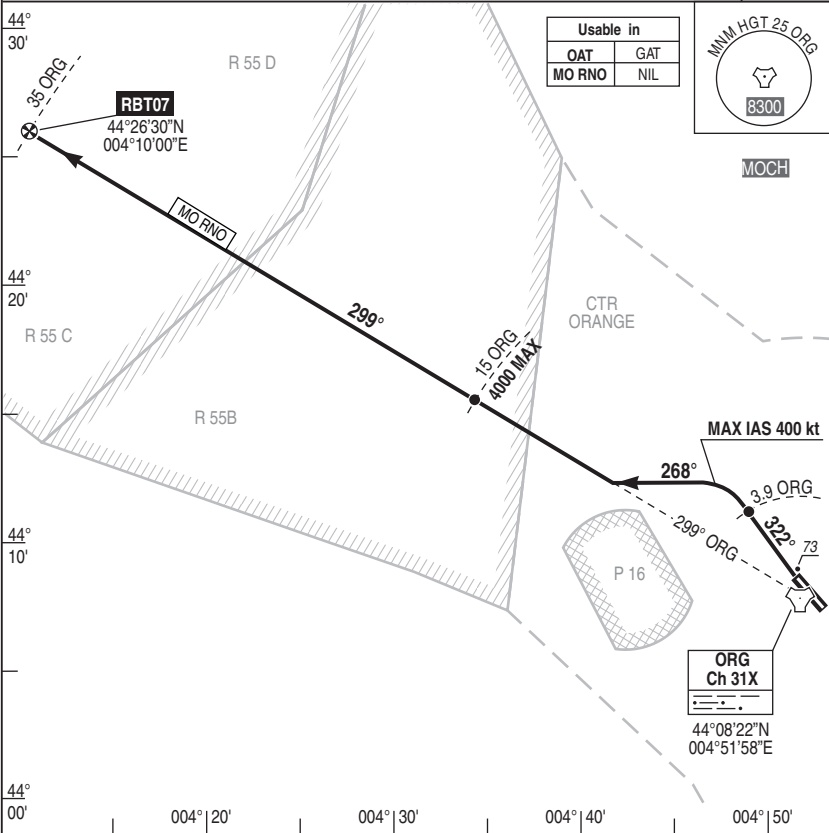
NATIONAL FRA
INSTRUMENT APPROACH
ALT AD : 197 THR : 186

06 OCT 2022

SID 02 ORANGE CARITAT LFMO
DEPARTURE RWY32

APP : 299.775 (Recovery)
TWR : 128.950 - 388.775 - 257.800 - 122.100

VAR
2°E (20)



REF HGT : ALT THR in ft

DEPARTURE MO RNO RWY 32 : Climb (1) straight ahead MT 322° up to 4000 MAX. At 3.9 ORG turn LEFT MT 268° to intercept and follow RDL 299° ORG (MT 299°) to RBT07. At 15 ORG, climb up to cleared level.

- (1) Théorique climb gradient **10.6 %** (2) until 100 ft then 8.75 %.
 - (2) Determining obstacle : Vegetation of 73 ft at 142 m from DER and at 187 m right of runway axis.
- Radio failure : squawk 7600 and apply french national regulation.

DIRCAM