

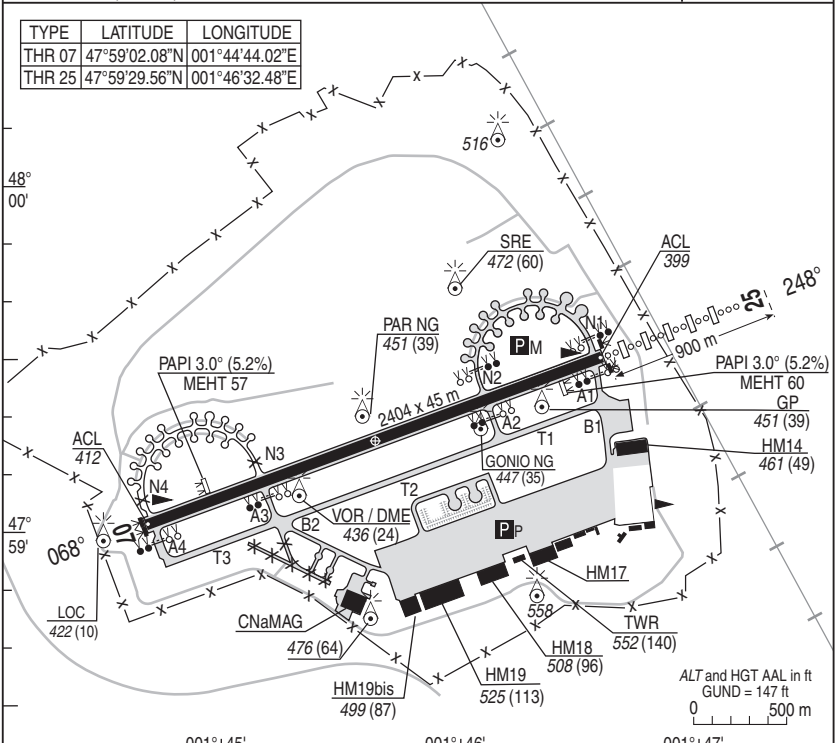
NATIONAL FRA AERODROME CHART

02 NOV 2023

01 ORLEANS BRICY LFOJ

ALT AD : 412 (15 hPa)

VAR : 1°E (20)



RWY	LIGHTING		DECLARED DISTANCES				Surface Strength	MINIMUMS TKOF (RVR in m)				
	APPROACH	RWY	TORA	TODA	ASDA	LDA		CAT A	B	C	D	E
07	NIL	HI	2404	2404	2404	2404	Paved	550			550	
25	HI axial 900m	HI	2404	2404	2404	2404	Paved	550			550	

OMNIDIRECTIONAL DEPARTURES

- RWY07** : Climb **MT 068°** until **3 BCY**, then direct route up to enroute safety altitude.
- RWY25** : Climb **MT 248°** until **3 BCY**, then direct route up to enroute safety altitude.

MARKINGS - LIGHTINGS :

- Day lighting
- LIH APP line RWY25 - LIH RWY07/25
- Flashing lights TWY AST.

DIRCAM

DV (Flights Director) : 02 38 42 66 55 - 811 123 25 35

USE RESTRICTIONS

- Landing submitted to PPR from flights Director, O/R before 1500 from MON to FRI.
- Agreement number shall be mentioned in FPL item 18.

OTHER INFORMATIONS

- JET crash on RWY
- Power line

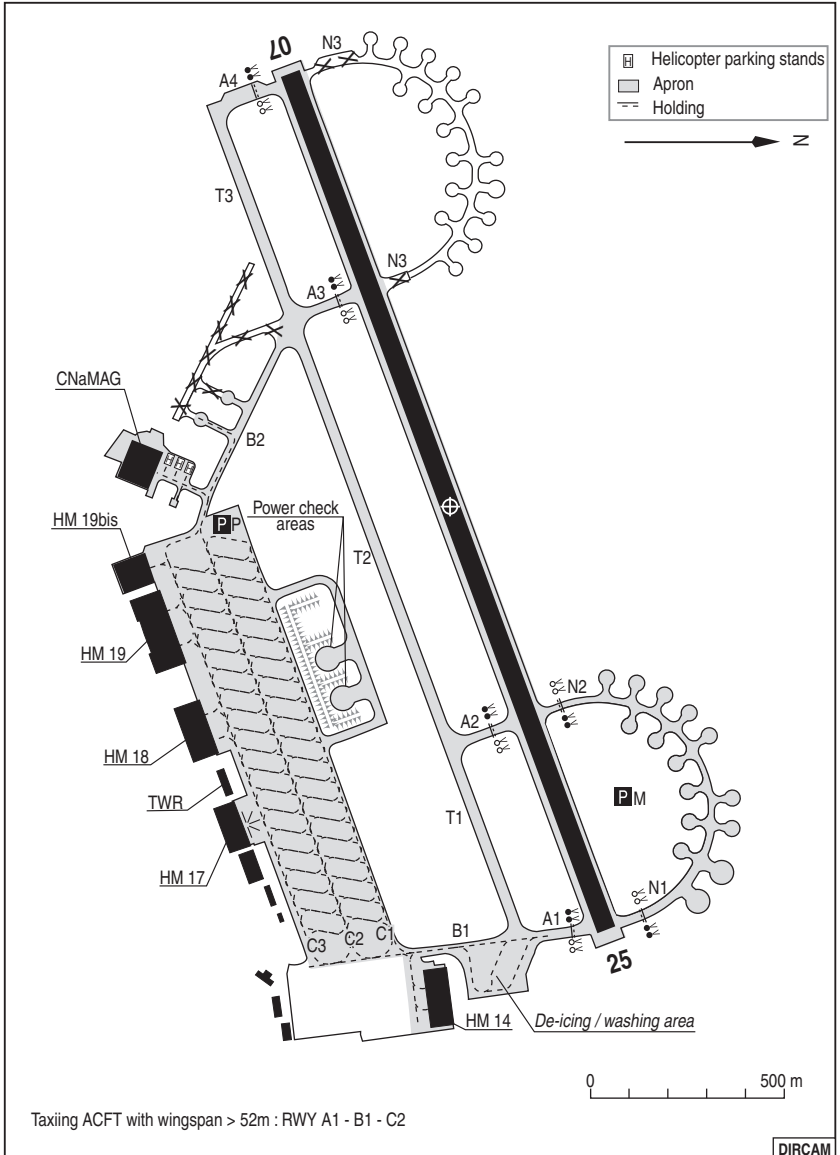
REFUELING

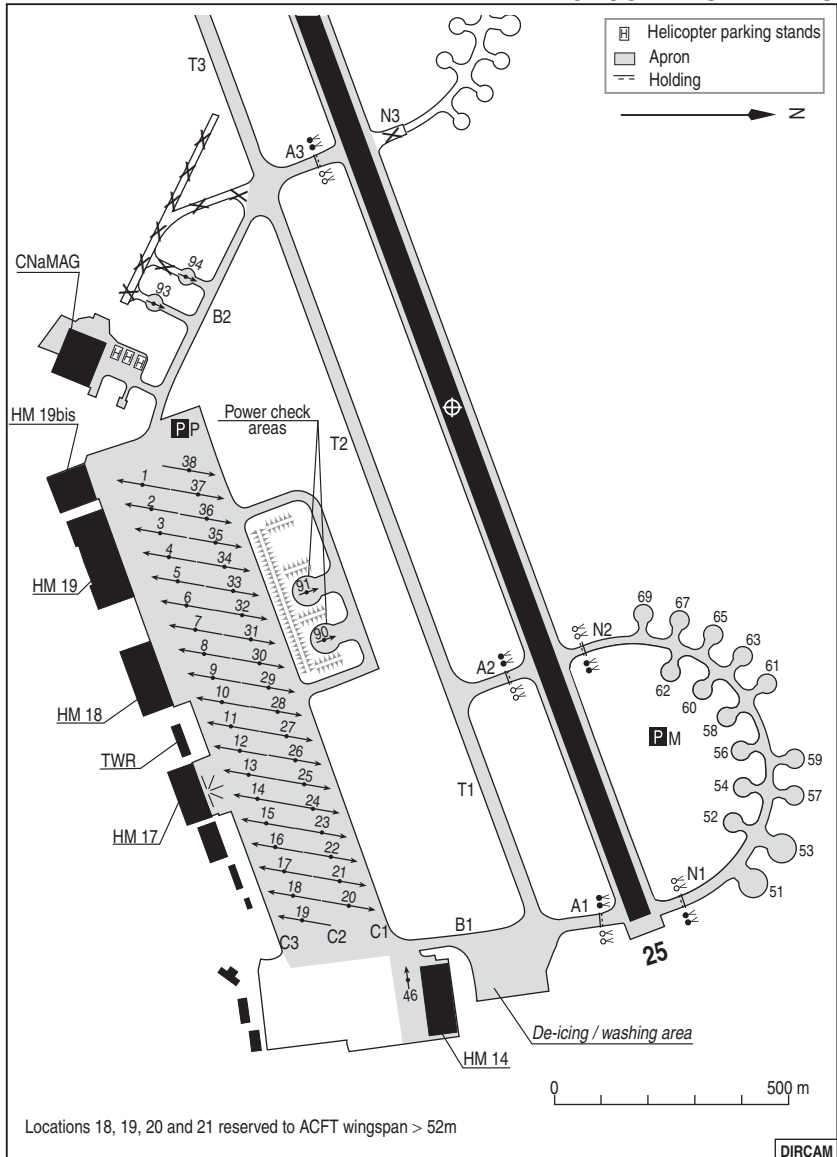
- F34 - F35 - Oxygen

ATS HOR

- MON-THU: 0700-1600. FRI: 0700-1400
- SAT, SUN, HOL : O/R before 1600 the previous open day
- SUMMER (-1 Hr).

DIRCAM





Locations 18, 19, 20 and 21 reserved to ACFT wingspan > 52m

VISUAL ARR & DEP

ALT AD : 412 (15 hPa)

20 APR 2023

02 ORLEANS BRICY LFOJ

JET RWY07

APP : 122.700 - 374.225

TWR : 121.100 - 378.750

AD FAF non GAT

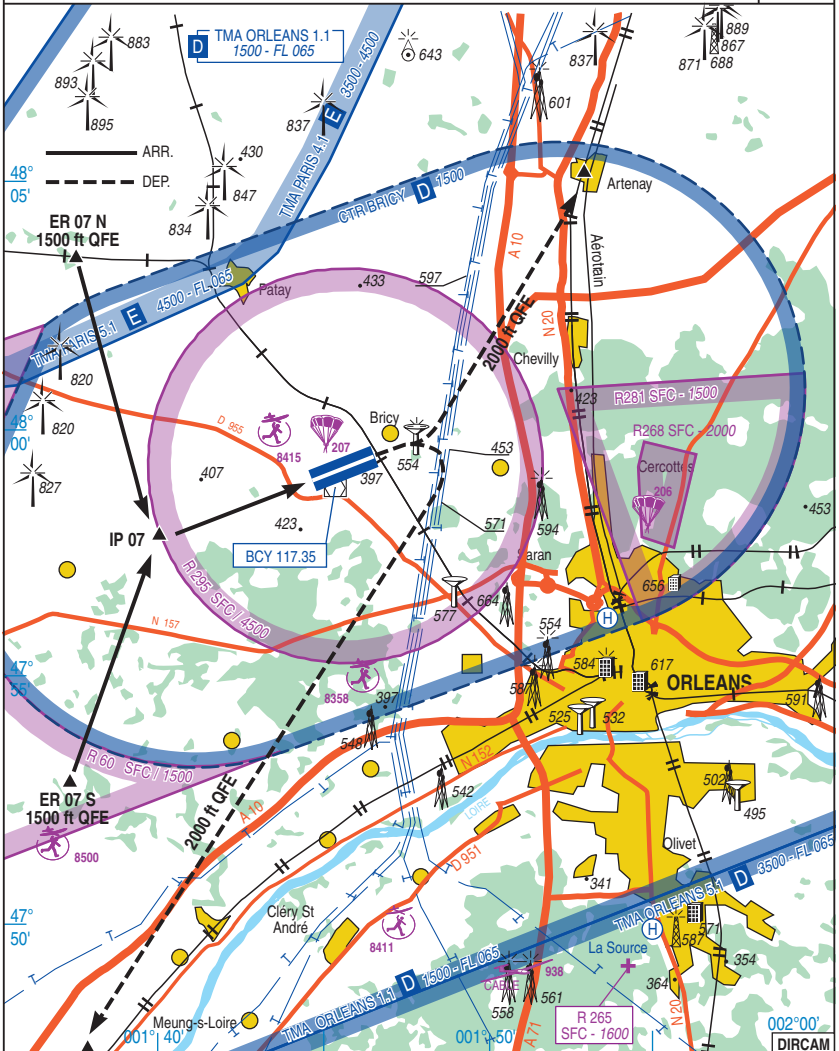
12 Km NW from ORLEANS

DV : 02.38.42.66.55

VAR

1°E

(20)



JET RWY07

CHG : OBS 895.

02 ORLEANS BRICY LFOJ

VISUAL ARR & DEP

ALT AD : 412 (15 hPa)

20 APR 2023

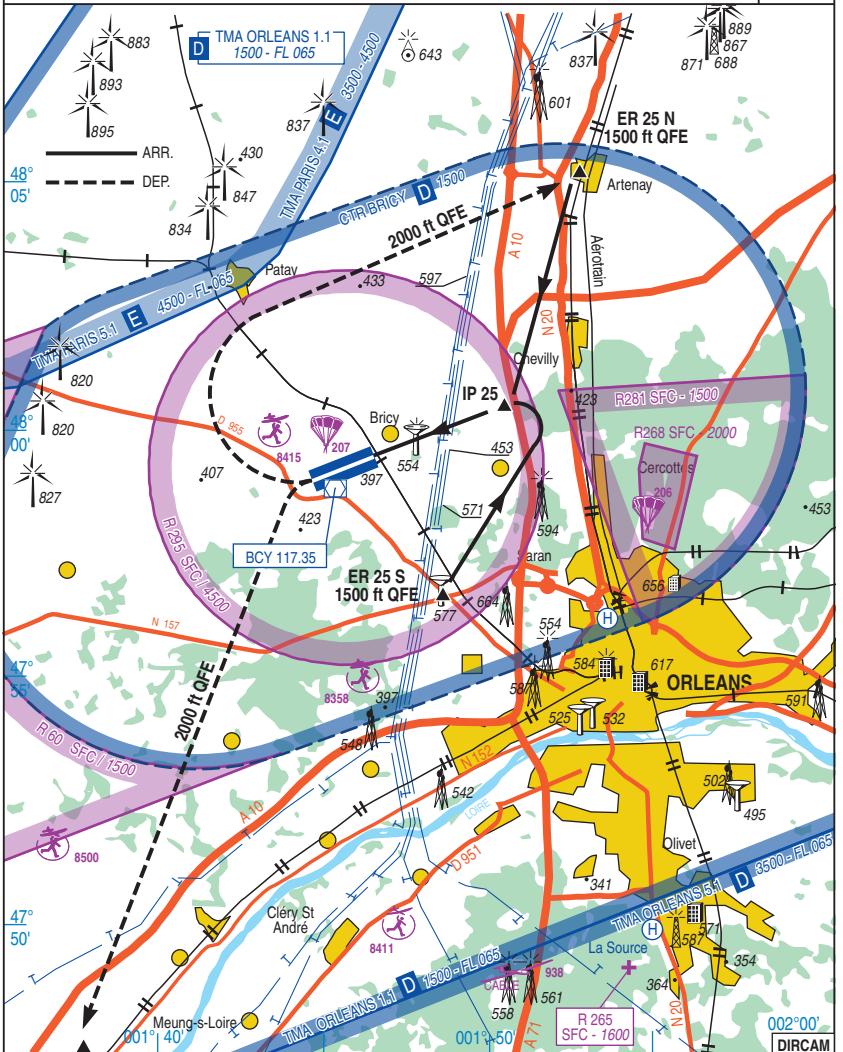
03 ORLEANS BRICY LFOJ

JET RWY25

APP : 122.700 - 374.225
TWR : 121.100 - 378.750

AD FAF non GAT
12 Km NW from ORLEANS
DV : 02.38.42.66.55

VAR
1°E
(20)



JET RWY25

CHG : OBS 895.

03 ORLEANS BRICY LFOJ

10 SEP 2020

04 ORLEANS BRICY LFOJ

VISUAL ARR & DEP INSTRUCTIONS

Airspace restriction :

Refer to AIP FRANCE or French Defense 1/1.000.000 aeronautical chart Instructions.

ARRIVAL :

Radio contact at MNM 10 NM.

Fly level 1500 ft QFE on the following points

RWY07 : ER 07 N : 307° / 6,8 NM BCY
ER 07 S : 220° / 7,6 NM BCY

RWY25 : ER 25 N : 040° / 7,6 NM BCY
ER 25 S : 139° / 3,9 NM BCY

Fly on to IP 07 or IP 25 (IP are located 3 NM from lead in RWY centre line)

Fly level 1500 ft QFE.

RWY07 and 25 : Break to left (unless ordered by TWR).

DEPARTURE :

North : **RWY07** : turn left to ARTENAY 2000 ft QFE
RWY25 : turn right to ARTENAY 2000 ft QFE

South: **RWY07** : turn right to BEAUGENCY 2000 ft QFE
RWY25 : turn left to BEAUGENCY 2000 ft QFE.

NAVIGATION WARNING :

Birds and cervidae concentration near and on platform. Especially in and near ACFT wrecks located on north-west apron area (near threshold RWY 07)

And on and around the BUCY SAINT LIPHARD dump and SAINT PERAVY LA COLOMBE composting plant

DIRCAM

NATIONAL FRA

ALT AD : 412 (15 hPa)

29 DEC 2022

05 ORLEANS BRICY LFOJ

HMG

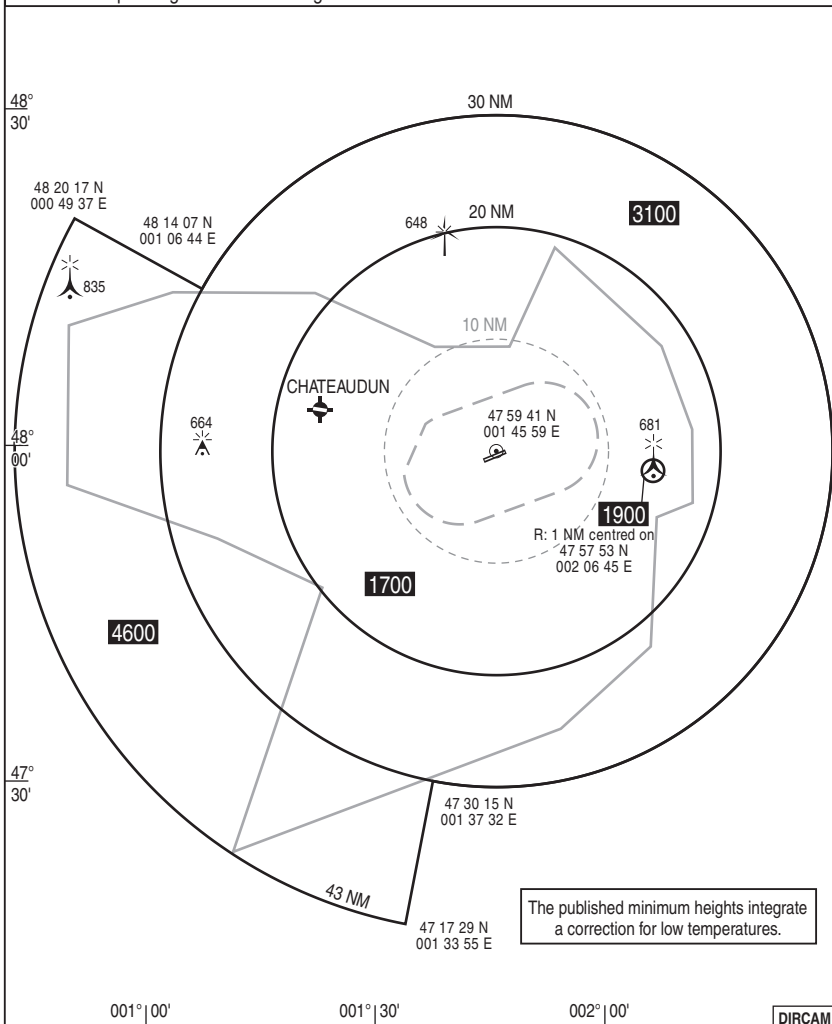
APP : 122.700 - 374.225

TWR : 122.100 - 378.750

VAR
1°E
(20)

COMMUNICATION FAILURE : Apply french national regulation.

HMG corresponding to normal working of APP surveillance means.



HMG

CHG : Low Temperatures revise.

05 ORLEANS BRICY LFOJ

DIRCAM

NATIONAL FRA INSTRUMENT APPROACH

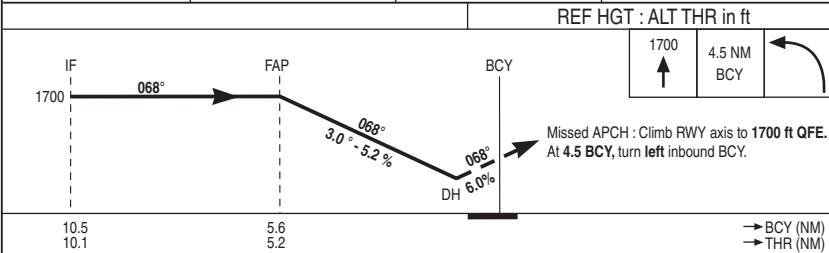
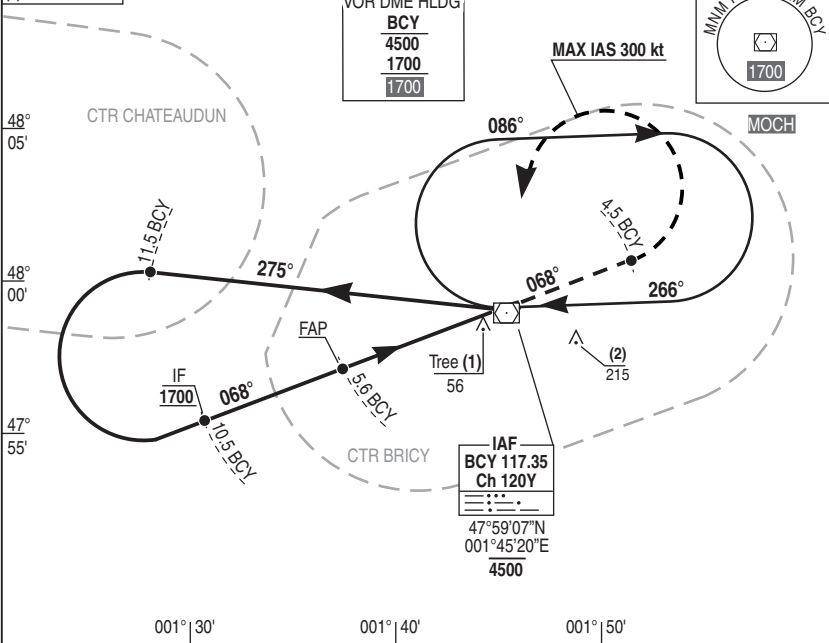
ALT AD : 412 THR : 412

01 DEC 2022

06 ORLEANS **BRICY** LFOJ
HPMA VOR DME PAR RWY07

APP : 122.700 - 374.225	RDH : 46	VAR 1°E (20)
TWR : 122.100 - 378.750		

- (1) OCH PAR
- (2) OCH CIRCLING



CAT	PAR			CIRCLING		
	DH	RVR	OCH	MDH	VIS	OCH
A	200	1300	154	550	1600	510
B				550	1600	
C				600	2400	
D/E				700	3600	

Remarks : VSS checked. DIRCAM

NATIONAL FRA INSTRUMENT APPROACH

ALT AD : 412 THR : 412

01 DEC 2022

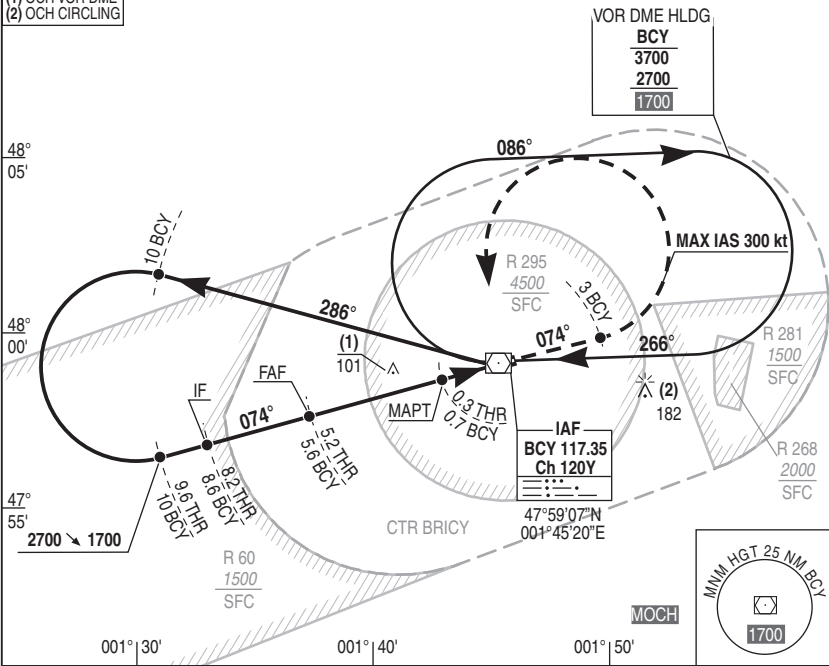
07 ORLEANS BRICY LFOJ
HPMA VOR DME RWY07

APP : 122.700 - 374.225

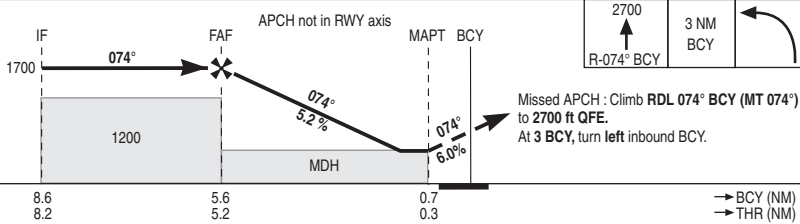
VAR
1°E (20)

TWR : 122.100 - 378.750

- (1) OCH VOR DME
- (2) OCH CIRCLING



REF HGT : ALT THR in ft



CAT	VOR DME			CIRCLING			BCY VOR/DME			
	MDH	RVR	OCH	MDH	VIS	OCH	NM	HGT	NM	HGT
A		1500		550	1600		5	1500	4	1190
B		1500		550	1600		3	870	3	870
C	350	1600	347	600	2400	487	2	560	2	560
D/E		1600		700	3600					

Remarks : VSS checked.

DIRCAM

HPMA VOR DME RWY07

CHG : Renaming.

07 ORLEANS BRICY LFOJ

NATIONAL FRA INSTRUMENT APPROACH

ALT AD : 412 THR : 399

15 JUN 2023

08 ORLEANS BRICY LFOJ HPMA VOR DME ILS or LOC RWY25

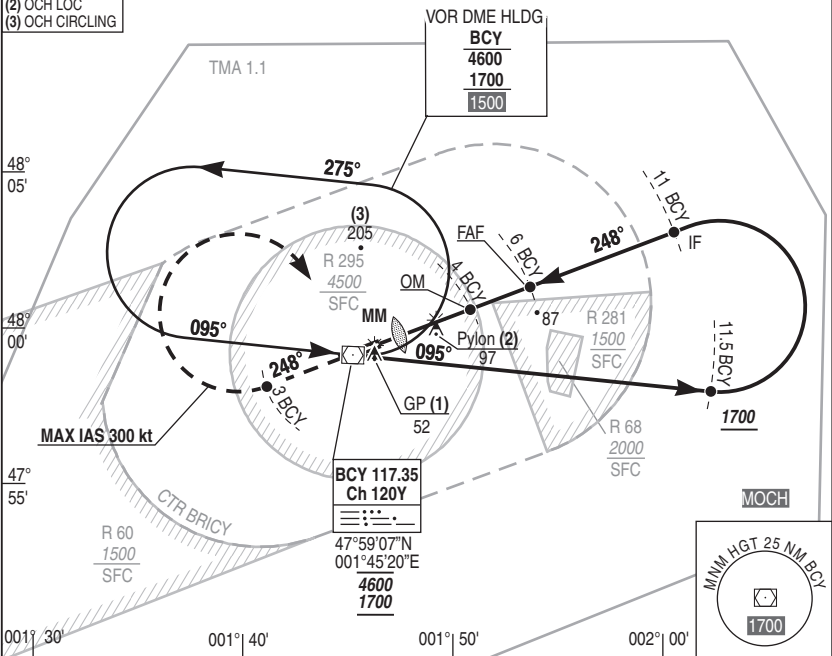
APP : 122.700 374.225
TWR : 122.100 378.750

ILS : OAN 111.3

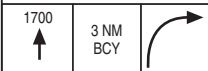
RDH : 58

VAR 1°E (20)

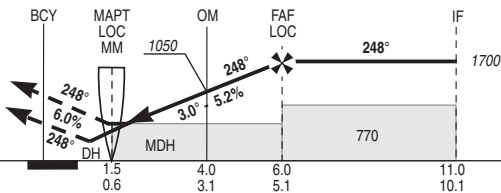
- (1) OCH ILS
- (2) OCH LOC
- (3) OCH CIRCLING



REF HGT : ALT THR in ft



Missed APCH : Climb RWY axis to 1700 ft QFE or follow ATC instructions. At 3 NM BCY, turn right inbound BCY.



BCY ← (NM)
THR ← (NM)

CAT	ILS			LOC			CIRCLING			BCY VOR/DME				
	DH	RVR	OCH	MDH	VIS	OCH	MDH	VIS	OCH		NM	2	3	4
A	200	550	150	350	900	343	550	1600	500	410	730	1050	1370	
B							550	1600						
C							600	2400						
D/E							700	3600						

Remarks : VSS checked.

DIRCAM

NATIONAL FRA INSTRUMENT APPROACH

ALT AD : 412 THR : 399

01 DEC 2022

09 ORLEANS BRICY LFOJ
HPMA RADAR ILS or LOC RWY25

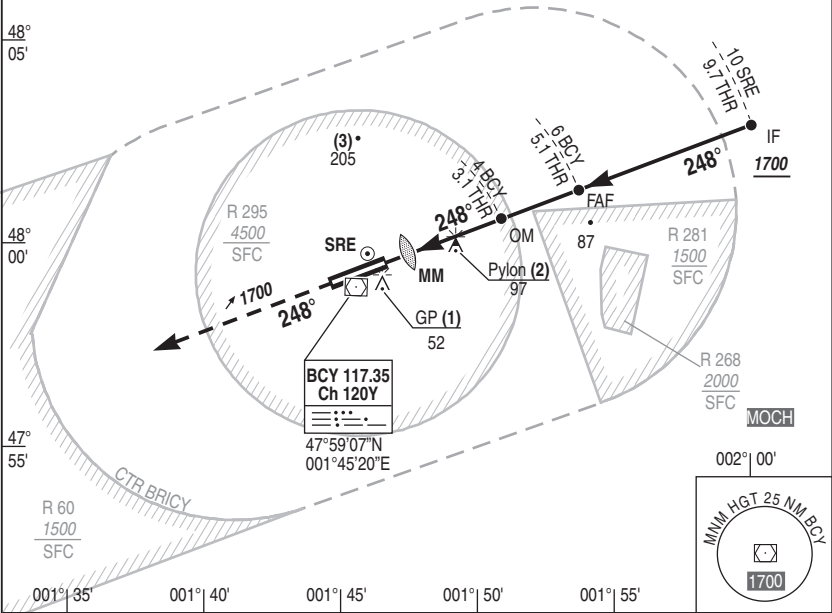
APP : 122.700 374.225
TWR : 122.100 378.750

ILS : OAN 111.3

RDH : 58

VAR 1°E (20)

- (1) OCH ILS
- (2) OCH LOC
- (3) OCH CIRCLING



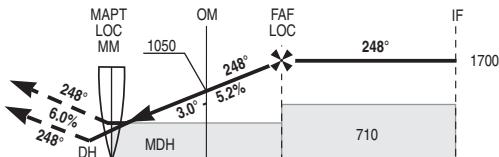
ILS true heading : 249.33°

REF HGT : ALT THR in ft

1700



Missed APCH : Climb to 1700 ft QFE
and maintain RWY heading.
Follow ATC instructions.



SRE ← (NM)	0.9	3.4	5.4	10
BCY ← (NM)	1.5	4.0	6.0	10.6
THR ← (NM)	0.6	3.1	5.1	9.7

CAT	ILS			LOC			CIRCLING			BCY VOR/DME				
	DH	RVR	OCH	MDH	VIS	OCH	MDH	VIS	OCH	NM	2	3	4	5
A	200	550	150	350	900	343	550	1600	500	410	730	1050	1370	
B							550	1600						
C							600	2400						
D/E							700	3600						

Remarks : VSS checked.

DIRCAM

HPMA RADAR ILS or LOC RWY25

CHG : Renaming.

09 ORLEANS BRICY LFOJ

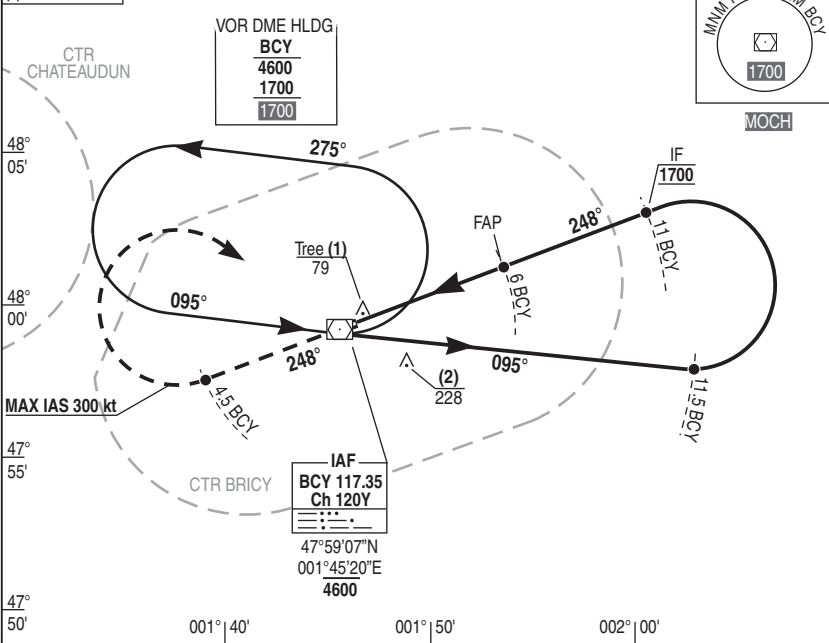
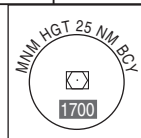
NATIONAL FRA
 INSTRUMENT APPROACH
 ALT AD : 412 THR : 399

10 ORLEANS BRICY LFOJ
 HPM VOR DME PAR RWY25

01 DEC 2022

APP : 122.700 - 374.225	RDH : 58	VAR 1°E (20)
TWR : 122.100 - 378.750		

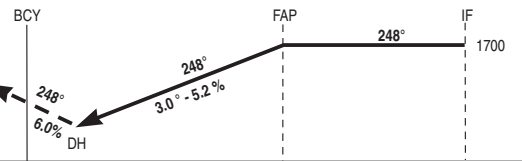
- (1) OCH PAR
- (2) OCH CIRCLING



REF HGT : ALT THR in ft



Missed APCH : Climb RWY axis to 1700 ft QFE.
 At 4.5 BCY, turn right inbound BCY.



BCY ← (NM)		6	11
THR ← (NM)		5.1	10.1

CAT	PAR			CIRCLING		
	DH	RVR	OCH	MDH	VIS	OCH
A	200	550	177	550	1600	523
B				550	1600	
C				600	2400	
D/E				700	3600	

Remarks : VSS checked. DIRCAM

NATIONAL FRA INSTRUMENT APPROACH

ALT AD : 412 THR : 399

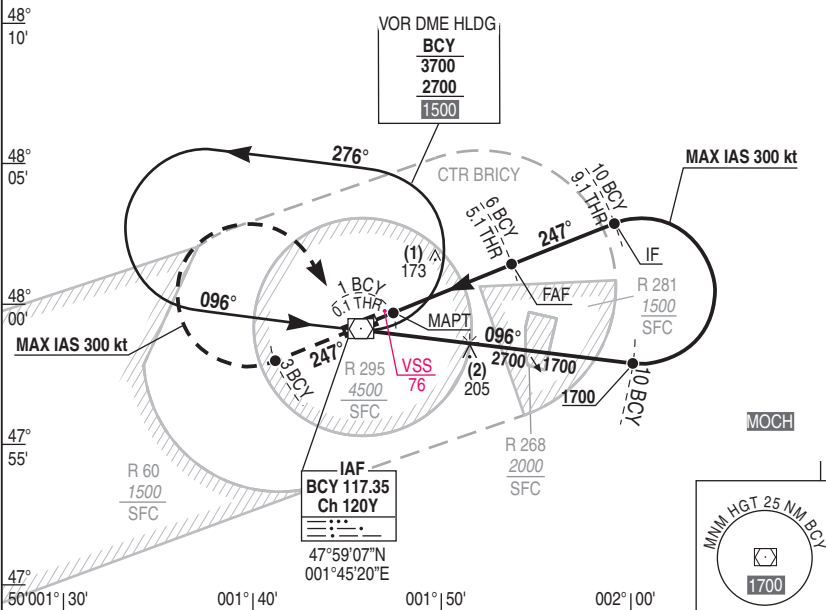
20 APR 2023

11 ORLEANS BRICY LFOJ HPMA VOR DME RWY25

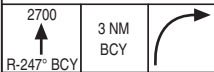
APP : 122.700 374.225
TWR : 122.100 378.750

VAR
1°E (20)

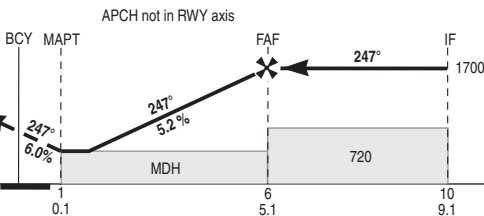
(1) OCH VOR DME
(2) OCH CIRCLING



REF HGT : ALT THR in ft



Missed APCH : Climb RDL 247° BCY (MT 247°) to 2700 ft QFE.
At 3 BCY, turn right inbound BCY.



BCY ← (NM)
THR ← (NM)

CAT	VOR DME			CIRCLING			BCY VOR/DME				
	MDH	RVR	OCH	MDH	VIS	OCH	NM	3	4	5	6
A				550	1600						
B				550	1600						
C	420	1200	419	600	2400	500	HGT	720	1040	1360	1680
D/E				700	3600						

Remarks : VSS crossed

DIRCAM

NATIONAL FRA
INSTRUMENTS DEPARTURE

SID 01 ORLEANS BRICY LFOJ
DEPARTURE OSCAR 1RE RWY 07

ALT AD : 412 THR : 412

05 NOV 2020

APP : 122.700 - 374.225

TWR : 122.100 - 378.750

VAR
1°E (20)

Usable in	
OAT	GAT
OSCAR 1RE	NIL

MAX IAS 280 Kt

BCY 117.35
Ch 120Y
47°59'07"N
001°45'20"E

3600 MAX

48°
00'

H20

172°

068°

3 BCY

TMA 1.1

TMA 4

47°
50'

10 BCY

3600 MAX / FL055

TMA 5.1

13 BCY

198°

FL 055 MAX

A3

P 34

20 BCY

FL055 / FL090

47°
40'

OSCAR

47°33'38"N
001°32'22"E
FL090

002° 00'

MOCH

MIN HGT 25 NM BCY

1700

27 BCY

001° 40'

001° 50'

REF HGT : ALT THR in ft

DEPARTURE OSCAR 1RE : Climb MT 068° to 3600 MAX.

At 3 BCY, turn left MT 172° (RDL 352° BCY) to BCY then follow RDL 198° BCY (MT 198°).

At 10 BCY (3600 MAX) continue climb to 13 BCY (FL 055 MAX) maintain FL 055 until 20 BCY and then climb to OSCAR at FL 090.

COMMUNICATION FAILURE : 7600 and apply French national regulation.

DIRCAM

DEPARTURE OSCAR 1RE RWY 07

CHG : Pagination.

SID 01 ORLEANS BRICY LFOJ

NATIONAL FRA
INSTRUMENTS DEPARTURE

SID 02 ORLEANS BRICY LFOJ
DEPARTURE OSCAR 1RW RWY 25

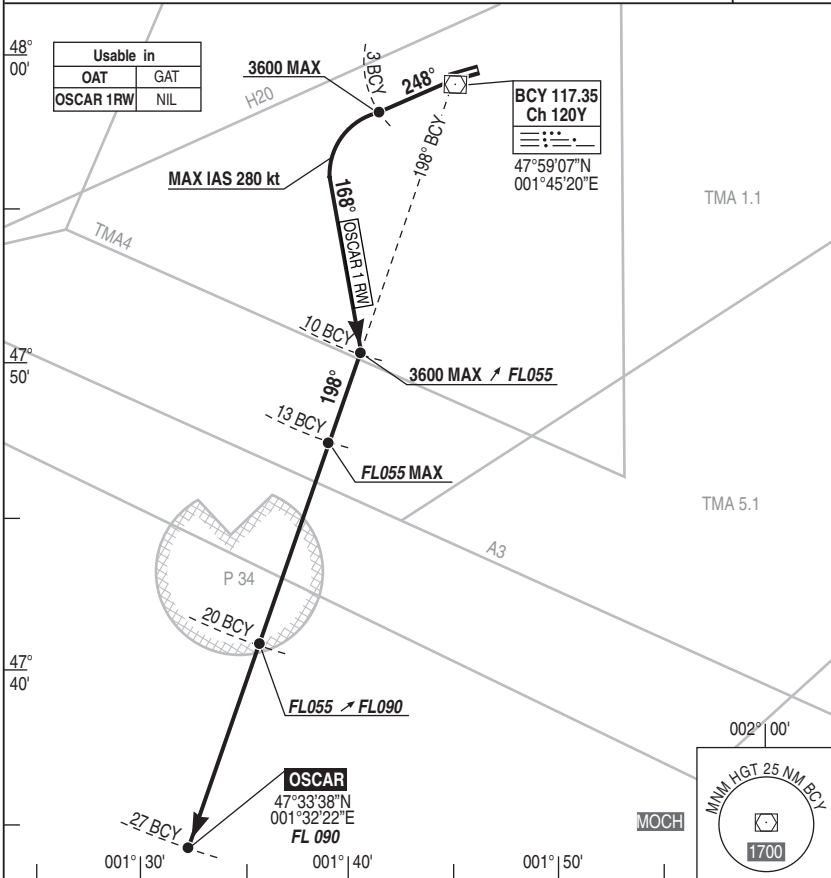
ALT AD : 412 THR : 399

05 NOV 2020

APP : 122.700 - 374.225

TWR : 122.100 - 378.750

VAR
1°E (20)



REF HGT : ALT THR in ft

DEPARTURE OSCAR 1RW : Climb MT 248° up to 3600 MAX.

At 3 BCY, turn **left** MT 168° to intercept and follow RDL 198° BCY (MT 198°).

At 10 BCY (3600 MAX) continue climb to 13 BCY (**FL 055 MAX**) maintain **FL 055** until 20 BCY and then climb to **OSCAR** at **FL 090**.

COMMUNICATION FAILURE : 7600 and apply French national regulation.

DIRCAM

DEPARTURE OSCAR 1RW RWY 25

CHG : Pagination.

SID 02 ORLEANS BRICY LFOJ