

# NATIONAL FRA AERODROME CHART

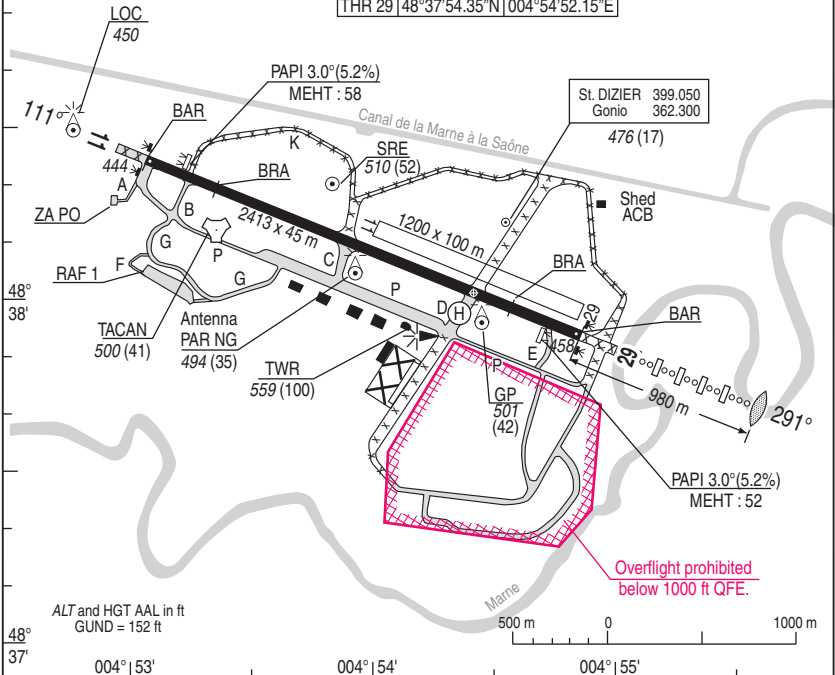
05 NOV 2020

# 01 SAINT DIZIER ROBINSON LFSI

ALT AD : 459 (16 hPa)

VAR : 2°E (20)

| TYPE   | LATITUDE      | LONGITUDE      |
|--------|---------------|----------------|
| THR 11 | 48°38'24.90"N | 004°53'03.68"E |
| THR 29 | 48°37'54.35"N | 004°54'52.15"E |



| RWY | LIGHTING   |     | DECLARED DISTANCES |      |      |      | Surface<br>Strength | MINIMUMS TKOF (RVR in m) |          |     |
|-----|------------|-----|--------------------|------|------|------|---------------------|--------------------------|----------|-----|
|     | APPROACH   | RWY | TORA               | TODA | ASDA | LDA  |                     | CAT A. B. C              | CAT D. E | PO  |
| 11  | NIL        | HI  | 2413               | 2413 | 2413 | 2413 | Paved               | 400                      | 400      | 300 |
| 29  | OACI CAT 1 | HI  | 2413               | 2413 | 2413 | 2413 | 22 F/C/W/T (1)      | 400                      | 400      | 300 |

(1) THR 11 / THR 29 : 38/F/C/W/T

### OMNIDIRECTIONAL DEPARTURES

**RWY 11** (Alt THR : 444) : Climb **MT 116°** up to **3000 ft QFE** then direct route up to enroute safety altitude.

**RWY 29** (Alt THR : 458) : Climb **MT 286°** up to **3000 ft QFE** then direct route up to enroute safety altitude.

### MARKINGS - LIGHTINGS :

- Day lighting : HI
- Flashing lights and PAPI RWY 11/29 (3°)
- Distance panels south side of RWY : each 300m - TWY - AST

DIRCAM

**OTHER INFORMATIONS :**

- BRA RWY 11/29
- BAR RWY 11/29 (manual raising : O/R or automatic if reaching end of RWY and IAS > 40 kts).
- Landing submitted to Flights Director (air base duty officer) clearance for non based ACFT. PPR number must be filed in case 18 of FPL.
- Mandatory PPR for all MIL ACFT to be requested to Flights Director.

**PARTICULAR INSTRUCTION :**

- Descent, climb and APP/APP procedures are submitted to APP supervisor clearance (Tel : 811 113 8015 or PTT : 03 25 07 80 15).
- Descent below HMSR are possible only by performing a IFR procedure until finding visual meteorological conditions.
- Between Strip B and C, Taxiway P not available for ACFT with a wingspan higher than 20m.
- After omnidirectional departure, plan MMD, RLP, EPL, REM or TRO (first point in FPL route text field).
- For ACFT with a wingspan higher than 36m, use of strip D is mandatory to join and vacate RWY.
- Simultaneous use of paved and unpaved RWY prohibited.

**REFUELING:**

- F 34 - Oxygen (O/R).

**HOR ATS:**

- WINTER : Mon /Thu : 0715/1620 - Fri : 0715/1400 - Sat, Sun, days off : O/R previous Friday before 1430.  
HN : O/R before 1530 previous open day.  
(SUMMER : - 1h)

# VISUAL ARR & DEP

ALT AD : 459 (16 hPa)

10 SEP 2020

# 02 SAINT DIZIER ROBINSON LFSI

JET RWY 11 & 29

APP : 134.775 - 142.450° - 399.050° (Recovery) -

388.800° (Climb) 362.300°

TWR : 134.775 (O/R) - 140.175° - 374.875°

GND : 122.100 - 257.800° \* Reserved to MIL

AD FAF restricted use

3 Km SW from ST DIZIER

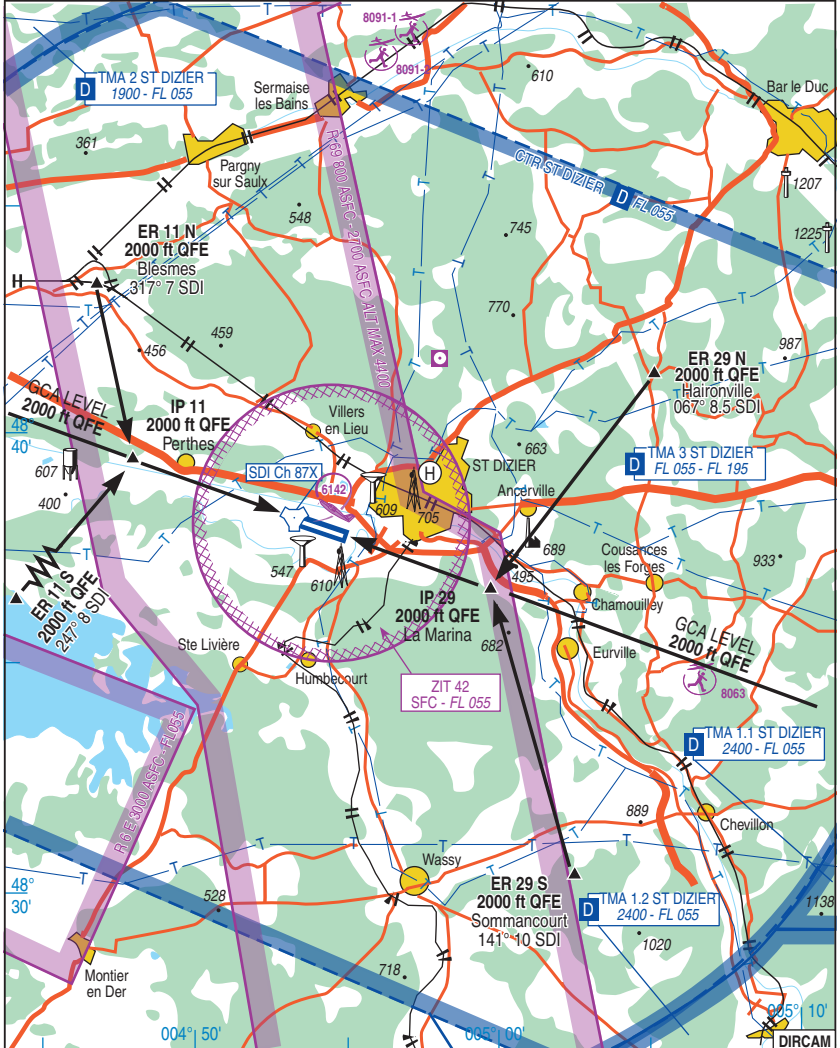
APP : 03.25.07.80.15

BIA : 03.25.07.70.34

VAR

2°E

(20)



JET RWY 11 & 29

CHG : VAR

02 SAINT DIZIER ROBINSON LFSI

**VISUAL ARR & DEP INSTRUCTIONS**

Airspace restriction :

Refer to AIP FRANCE or French Defense 1/1.000.000 aeronautical chart.

**ARRIVAL**

Contact APP CH 17 2 MIN before entering circuit.

Fly level 2000 ft QFE at the following points :

**RWY 11 :** ER 11 N : 317° / 7 NM TACAN SDI.

ER 11 S : 247° / 8 NM TACAN SDI.

**RWY 29 :** ER 29 N : 067° / 8,5 NM TACAN SDI.

ER 29 S : 141° / 10 NM TACAN SDI.

Join IP 11 or IP 29 at level 2000 ft QFE (IP 3 NM from lead in RWY on RWY axis).

Steady level 1500 ft QFE for break

**RWY 11 :** Break to right .**RWY 29 :** Break to left.**PARTICULAR INSTRUCTIONS :**

In case of pull up : - Maintain RWY axis till end of RWY, then fly on to S entry point of RWY in use at level 2000 ft QFE.

- Non stationed or foreign ACFT will perform their downwind leg after TWR instructions.

**DEPARTURE****RWY 11 :** Noise abatement procedure. As soon as MAX finesse is reached, or at 800 ft QFE, take heading 147° to avoid flying over SAINT DIZIER. Maintain 1500 ft QFE until TMA limits.**RWY 29 :** Climb straight ahead to 800 ft QFE then own navigation.

Maintain level &lt; 1500 ft QNH until TMA limits.

**SPECIAL VFR FLIGHT(day only) :**

authorized by SAINT-DIZIER APP or TWR, within the CTR, if the following conditions are applied :

- Flight Visibility  $\geq$  1500m (800m HEL) + clear of cloud and surface in sight + IAS  $\leq$  140 kts- Ground Visibility  $\geq$  1500m (800m HEL) + AD ceiling  $\geq$  600 ft.**SPECIAL OAT TYPE VICTOR FLIGHT (day only) :**

authorized by SAINT-DIZIER APP or TWR, within the CTR, if the following conditions are applied :

- Flight Visibility  $\geq$  3700m or distance covered in 30 sec of flight- Nebulosity between 3/8 and 8/8 over AD  $\geq$  700 ft.

DIRCAM

# NATIONAL FRA

ALT AD : 459 (16 hPa)

10 SEP 2020

# 04 SAINT DIZIER ROBINSON LFSI

HMG

APP : 134.775 - 142.450\* - 399.050\* (Recovery) - 388.800\* (Climb) 362.300\*

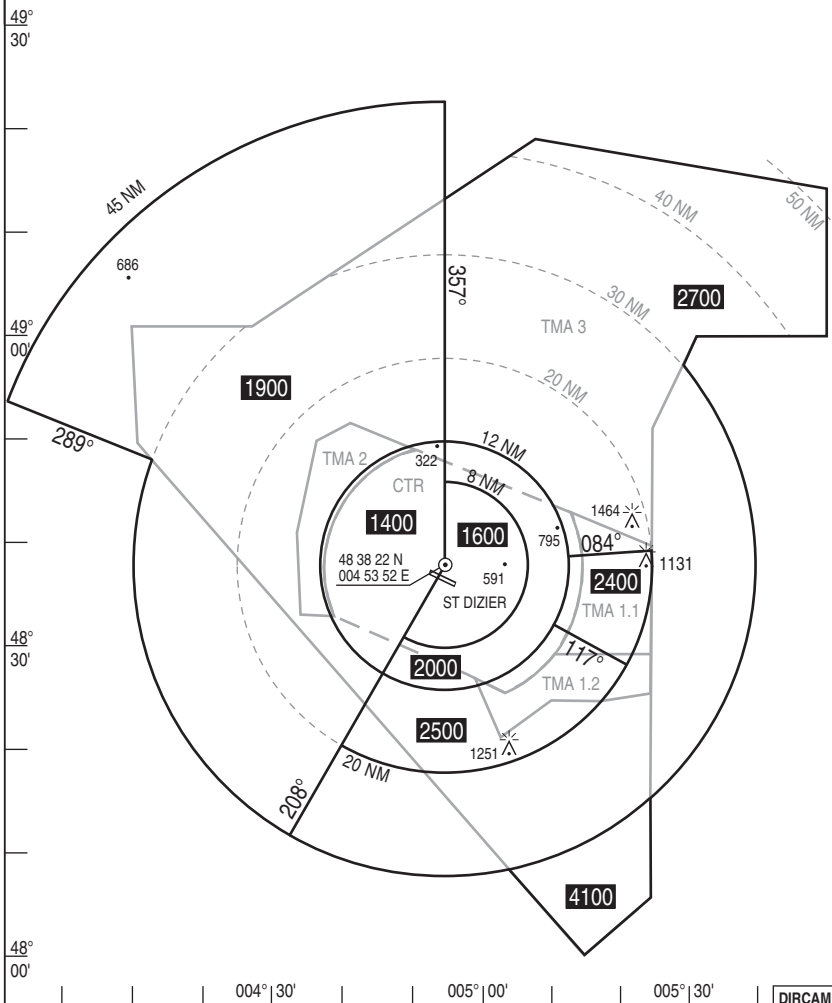
TWR : 134.775 (O/R) - 140.175\* - 374.875\*

GND : 122.100 - 257.800\* \* Reserved to MIL

VAR  
2°E  
(20)

COMMUNICATION FAILURE : Apply french national regulation.

HMG corresponding to normal working of APP surveillance means.



HMG

CHG : VAR.

04 SAINT DIZIER ROBINSON LFSI

DIRCAM

# NATIONAL FRA INSTRUMENT APPROACH

## 05 SAINT-DIZIER ROBINSON LFSI TACAN / PAR RWY 11

ALT AD : 459 THR : 444

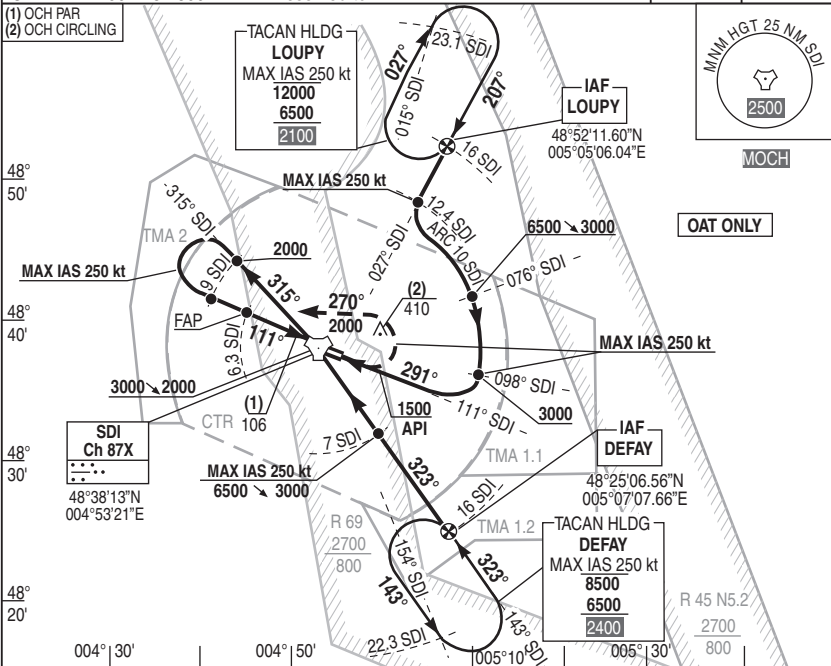
10 SEP 2020

APP : 134.775 - 142.450\* - 399.050\* (Recovery) - 388.800\* (Climb) 362.300\*  
 TWR : 134.775 (O/R) - 140.175\* - 374.875\*  
 GND : 122.100 - 257.800\* \* Reserved to MIL

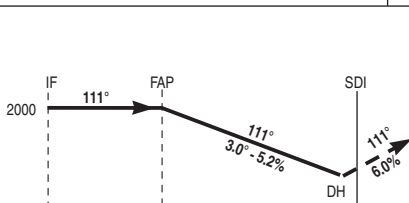
RDH : 50

VAR  
2°E (20)

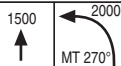
- (1) OCH PAR
- (2) OCH CIRCLING



REF HGT : ALT THR in ft



Missed APCH : Climb straight ahead up to 2000 ft QFE. At 1500 ft QFE turn left MT 270° to intercept and follow RDL 315° SDI (MT 315°). A 9 SDI turn left for new presentation.



- TAC (NM)
- THR (NM)

| CAT | PAR |      |     | CIRCLING |      |     |
|-----|-----|------|-----|----------|------|-----|
|     | DH  | RVR  | OCH | MDH      | VIS  | OCH |
| A   | 210 | 1200 | 204 | 710      | 1600 | 705 |
| B   |     |      |     |          | 1600 |     |
| C   |     |      |     |          | 2400 |     |
| D/E |     |      |     |          | 3600 |     |

Remarks :

DIRCAM

TACAN / PAR RWY 11

CHG : VAR.

05 SAINT-DIZIER ROBINSON LFSI

# NATIONAL FRA INSTRUMENT APPROACH

# 06 SAINT-DIZIER ROBINSON LFSI RADAR / PAR RWY 11

ALT AD : 459 THR : 444

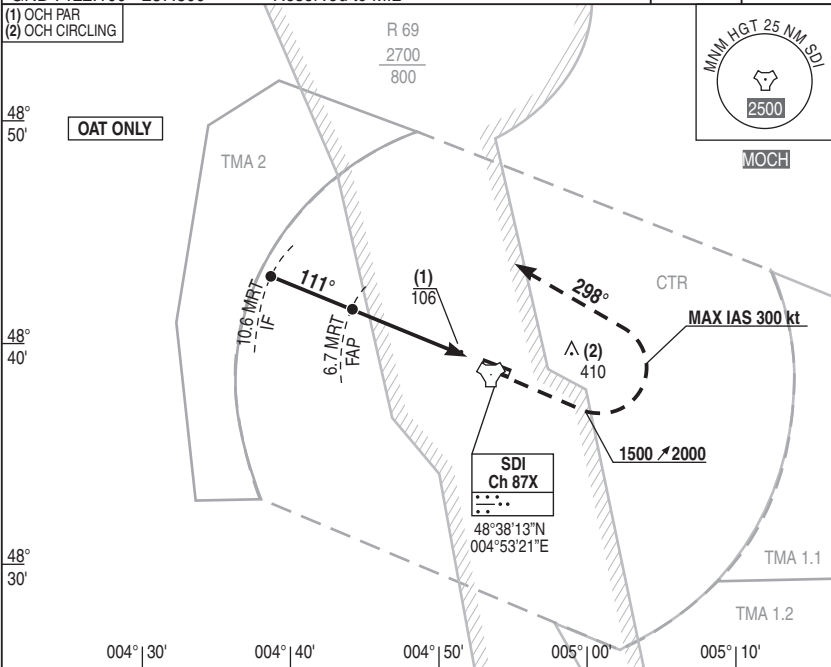
10 SEP 2020

APP : 134.775 - 142.450\* - 399.050\* (Recovery) - 388.800\* (Climb) 362.300\*  
 TWR : 134.775 (O/R) - 140.175\* - 374.875\*  
 GND : 122.100 - 257.800\* \* Reserved to MIL

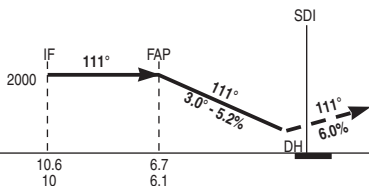
RDH : 50

VAR  
2°E (20)

(1) OCH PAR  
(2) OCH CIRCLING



REF HGT : ALT THR in ft



Missed APCH: Climb straight ahead up to 2000 ft QFE. At 1500 ft QFE turn left MT 298°. Then follow clearance.

→ MRT (NM)  
→ THR (NM)

| CAT | PAR |      |     | CIRCLING |      |     |
|-----|-----|------|-----|----------|------|-----|
|     | DH  | RVR  | OCH | MDH      | VIS  | OCH |
| A   | 210 | 1200 | 204 | 710      | 1600 | 705 |
| B   |     |      |     |          | 1600 |     |
| C   |     |      |     |          | 2400 |     |
| D/E |     |      |     |          | 3600 |     |

Remarks :

DIRCAM

# NATIONAL FRA INSTRUMENT APPROACH

# 07 SAINT-DIZIER ROBINSON LFSI IAF DEFAY HPMA TACAN RWY 11

ALT AD : 459 THR : 444

10 SEP 2020

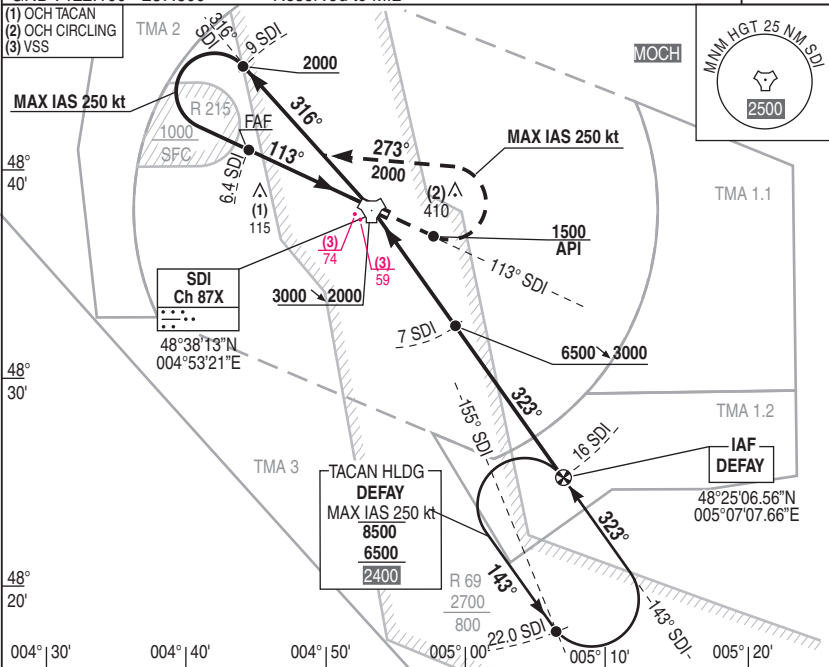
APP : 134.775 - 142.450\* - 399.050\* (Recovery) - 388.800\* (Climb) 362.300\*

TWR : 134.775 (O/R) - 140.175\* - 374.875\*

GND : 122.100 - 257.800\* \* Reserved to MIL

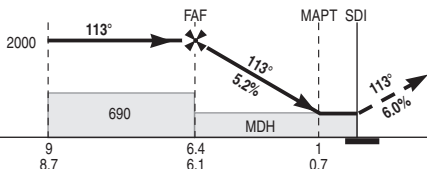
VAR  
2°E (20)

- (1) OCH TACAN
- (2) OCH CIRCLING
- (3) VSS



REF HGT : ALT THR in ft

APCH not in RWY axis



API: Climb RDL 113° SDI up to 2000. At 1500, turn left MAG Track 273° to intercept and follow RDL 316° SDI. At 9 SDI, turn left for new approach. Do not turn before MAPT.



| CAT | TACAN |      |     | CIRCLING |      |     | TACAN |      |      |      |     |     |
|-----|-------|------|-----|----------|------|-----|-------|------|------|------|-----|-----|
|     | MDH   | RVR  | OCH | MDH      | VIS  | OCH | NM    | 6    | 5    | 4    | 3   | 2   |
| A   |       | 1500 |     |          | 1600 |     | HGT   | 1870 | 1550 | 1240 | 920 | 600 |
| B   | 410   | 1500 | 410 | 710      | 1600 | 705 |       |      |      |      |     |     |
| C   |       | 1900 |     |          | 2400 |     |       |      |      |      |     |     |
| D/E |       | 1900 |     |          | 3600 |     |       |      |      |      |     |     |

Remarks : (3) VSS Crossed.

DIRCAM

IAF DEFAY TACAN RWY 11

CHG : VAR.

07 SAINT DIZIER ROBINSON LFSI



# NATIONAL FRA INSTRUMENT APPROACH

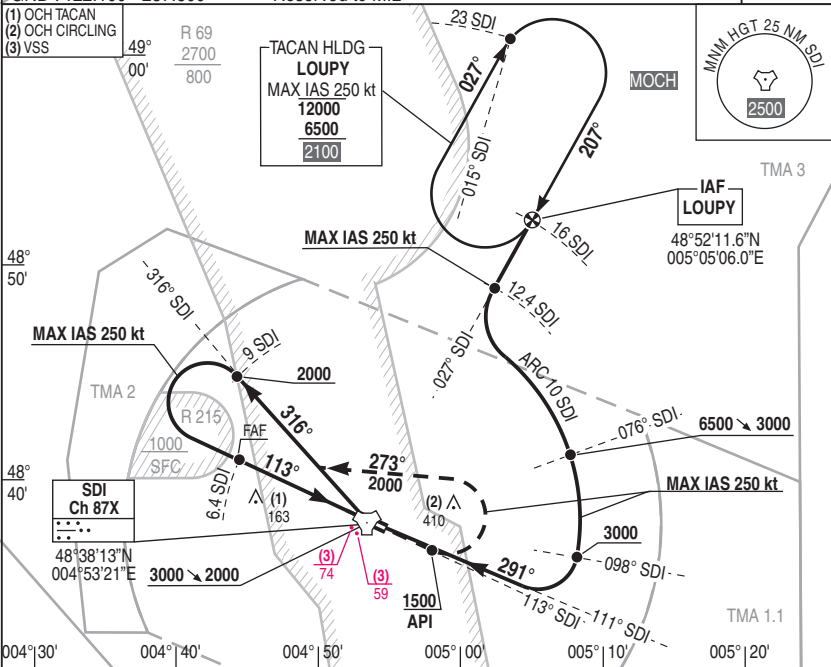
ALT AD : 459 THR : 444

10 SEP 2020

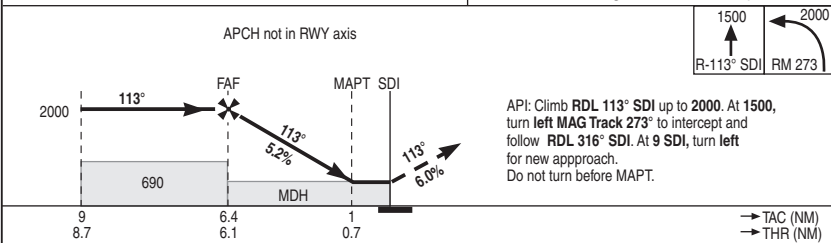
# 08 SAINT-DIZIER ROBINSON LFSI IAF LOUPY HPMA TACAN RWY 11

APP : 134.775 - 142.450\* - 399.050\* (Recovery) - 388.800\* (Climb) 362.300\*  
 TWR : 134.775 (O/R) - 140.175\* - 374.875\*  
 GND : 122.100 - 257.800\* \* Reserved to MIL

VAR  
2°E (20)



REF HGT : ALT THR in ft



| CAT | TACAN |      |     | CIRCLING |      |     | TACAN |      |      |      |     |     |
|-----|-------|------|-----|----------|------|-----|-------|------|------|------|-----|-----|
|     | MDH   | RVR  | OCH | MDH      | VIS  | OCH | NM    | 6    | 5    | 4    | 3   | 2   |
| A   |       | 1500 |     |          | 1600 |     | HGT   | 1870 | 1550 | 1240 | 920 | 600 |
| B   | 410   | 1500 | 410 | 710      | 1600 | 705 |       |      |      |      |     |     |
| C   |       | 1900 |     |          | 2400 |     |       |      |      |      |     |     |
| D/E |       | 1900 |     |          | 3600 |     |       |      |      |      |     |     |

Remarks : (3) VSS Crossed.

DIRCAM

# NATIONAL FRA INSTRUMENT APPROACH

## 09 SAINT-DIZIER ROBINSON LFSI INS GNSS RWY 11

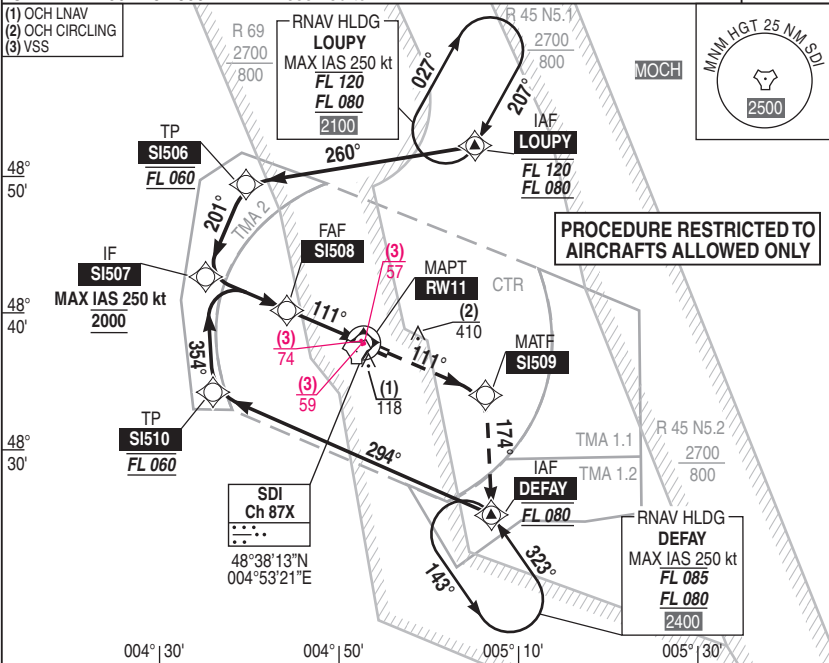
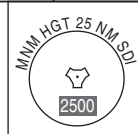
ALT AD : 459 THR : 444

10 SEP 2020

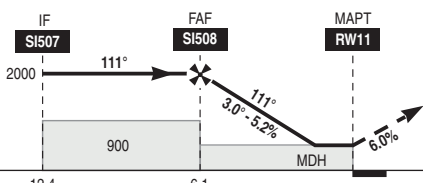
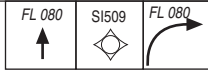
APP : 134.775 - 142.450\* - 399.050\* (Recovery) - 388.800\* (Climb) 362.300\*  
 TWR : 134.775 (O/R) - 140.175\* - 374.875\*  
 GND : 122.100 - 257.800\* \* Reserved to MIL

VAR  
2°E (20)

- (1) OCH LNAV
- (2) OCH CIRCLING
- (3) VSS



REF HGT : ALT THR in ft



Missed APCH : Climb to **FL080**  
inbound **SI509** then **DEFAY**.

12.4 6.1 → THR (NM)

| CAT | LNAV |      |     | CIRCLING |      |     | DIST RW11 |      |      |      |      |     |
|-----|------|------|-----|----------|------|-----|-----------|------|------|------|------|-----|
|     | MDH  | RVR  | OCH | MDH      | VIS  | OCH | NM        | 6    | 5    | 4    | 3    | 2   |
| A   |      | 1500 |     |          | 1600 |     |           |      |      |      |      |     |
| B   |      | 1500 |     |          | 1600 |     |           |      |      |      |      |     |
| C   | 370  | 1700 | 365 | 710      | 2400 | 705 |           |      |      |      |      |     |
| D/E |      | 1700 |     |          | 3600 |     | HGT       | 1960 | 1640 | 1320 | 1010 | 690 |

Remarks : (3) VSS Crossed.

DIRCAM

INS GNSS RWY 11

CHG : VAR.

09 SAINT DIZIER ROBINSON LFSI

# 10 SAINT DIZIER ROBINSON LFSI DATA INS GNSS RWY 11

10 SEP 2020

| TABLE FOR DATA INDICATOR |        |       |                                 | LFSI INS GNSS RWY11 - MAG VAR 1.8°E (20) |           |                            |      |                       |                       |              |
|--------------------------|--------|-------|---------------------------------|--|-----------|----------------------------|------|-----------------------|-----------------------|--------------|
| N° SEQ                   | CODING | IDENT | COORDINATES                     | TYPE                                     | DIST (NM) | MAG TRACK (TRUE TRACK) (°) | TURN | MIN HGT or LEVEL (FT) | MAX HGT or LEVEL (FT) | MAX IAS (KT) |
| 10                       | HM     | LOUPY | 48°52'11.6"N<br>005°05'06.0"E   | FO                                       |           | 207 (209)                  | R    | FL80                  | FL120                 | 250          |
| 10                       | IF     | LOUPY | 48°52'11.6"N<br>005°05'06.0"E   | FB                                       |           |                            |      | FL80                  | FL120                 | 300          |
| 20                       | TF     | SI506 | 48°49'49.0"N<br>004°39'58.5"E   | FB                                       | 16,8      | 260 (262,0)                | L    | FL60                  | FL60                  | 300          |
| 30                       | TF     | SI507 | 48°43'15.0"N<br>004°35'45.8"E   | FB                                       | 7,1       | 201 (203,0)                | L    | 2000                  | 2000                  | 250          |
| 10                       | HM     | DEFAY | 48°25'06.6"N<br>005°07'07.7"E   | FO                                       |           | 323 (325)                  | L    | FL80                  | FL80                  | 250          |
| 10                       | IF     | DEFAY | 48°25'06.6"N<br>005°07'07.7"E   | FB                                       |           |                            |      | FL80                  | FL80                  | 300          |
| 20                       | TF     | SI510 | 48°34'54.5"N<br>004°36'38.5"E   | FB                                       | 22,5      | 294 (296,0)                | R    | FL60                  | FL60                  | 300          |
| 30                       | TF     | SI507 | 48°43'15.0"N<br>004°35'45.8"E   | FB                                       | 8,4       | 354 (356,0)                | R    | 2000                  | 2000                  | 250          |
| 10                       | IF     | SI507 | 48°43'15.0"N<br>004°35'45.8"E   | FB                                       |           |                            |      | 2000                  | 2000                  | 250          |
| 20                       | TF     | SI508 | 48°40'48.0"N<br>004°44'33.1"E   | FB                                       | 6,3       | 111 (112,8)                |      | 2000                  | 2000                  |              |
| 30                       | TF     | RW11  | 48°38'24.92"N<br>004°53'03.56"E | FO                                       | 6,1       | 111 (112,9)                |      | 370                   |                       |              |
| 40                       | TF     | SI509 | 48°34'43.4"N<br>005°06'06.9"E   | FB                                       | 9,4       | 111 (113,0)                | R    |                       |                       | 300          |
| 50                       | TF     | DEFAY | 48°25'06.6"N<br>005°07'07.7"E   | FB                                       | 9,6       | 174 (176,0)                |      | FL80                  | FL80                  | 300          |

**LEGEND :** TF : Track to a Fix **DF** : Direct to a Fix **CF** : Course to a Fix **CH** : Course to a height **FO** : Fly Over **FB** : Fly By



# NATIONAL FRA INSTRUMENT APPROACH

10 SEP 2020

## 11 SAINT-DIZIER ROBINSON LFSI

ALT AD : 459 THR : 458

HPMA IAF LOUPY TACAN / ILS or LOC RWY 29

APP : 134.775 - 142.450° - 399.050° (Recovery) - 388.800° (Climb) - 362.300°  
 TWR : 134.775 (O/R) - 140.175 \* - 374.875 \*  
 GND : 122.100 - 257.800 \* \* Reserved to MIL

ILS : SDI 108.9

RDH : 52

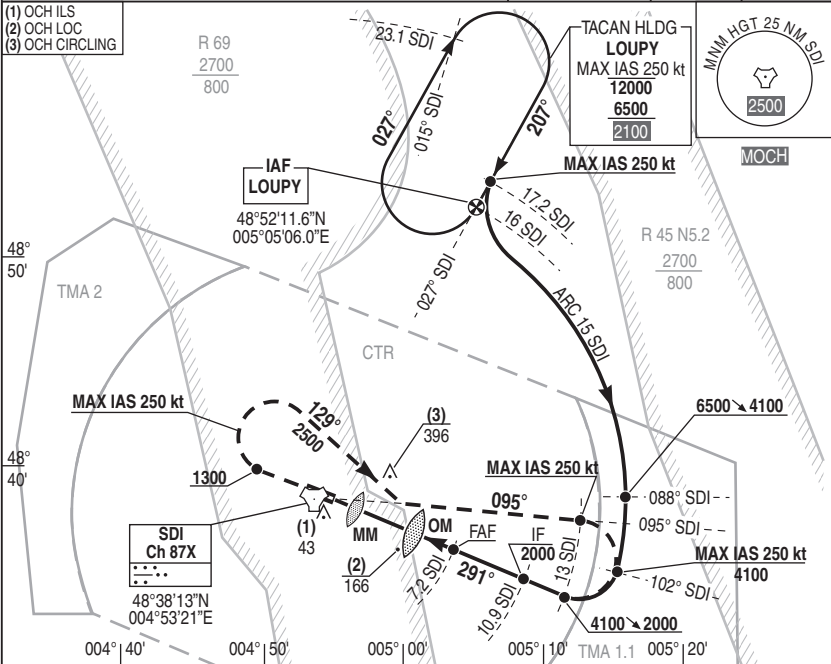
VAR  
2°E (20)

- (1) OCH ILS
- (2) OCH LOC
- (3) OCH CIRCLING

R 69  
2700  
800



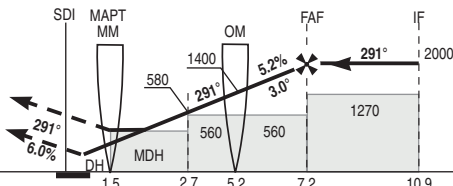
MOCH



ILS True Heading : 293.03 REF HGT : ALT THR in ft



Missed APCH: Climb RWY axis to 2500 ft QFE.  
 At 1300 ft QFE turn right MT 129° to intercept and follow RDL 095° SDI (MT 095°).  
 At 13 SDI turn right for new presentation.  
 At 13 SDI inbound descent at 2000 ft QFE.  
 Do not turn before MAPT.



TAC ← (NM)  
 THR ← (NM)

| CAT | ILS |     |     | LOC |      |     | CIRCLING |      |     | TACAN |     |      |      |      |   |
|-----|-----|-----|-----|-----|------|-----|----------|------|-----|-------|-----|------|------|------|---|
|     | DH  | RVR | OCH | MDH | RVR  | OCH | MDH      | VIS  | OCH | NM    | 3   | 4    | 5    | 6    | 7 |
| A   | 200 | 550 | 142 | 420 | 1200 | 412 | 700      | 1600 | 691 | 670   | 990 | 1300 | 1620 | 1940 |   |
| B   |     |     |     |     |      |     |          | 1600 |     |       |     |      |      |      |   |
| C   |     |     |     |     |      |     |          | 2400 |     |       |     |      |      |      |   |
| D/E |     |     |     |     |      |     |          | 3600 |     |       |     |      |      |      |   |

Remarks : VSS checked.

DIRCAM

HPMA IAF LOUPY TACAN / ILS or LOC RWY 29 CHG : VAR.

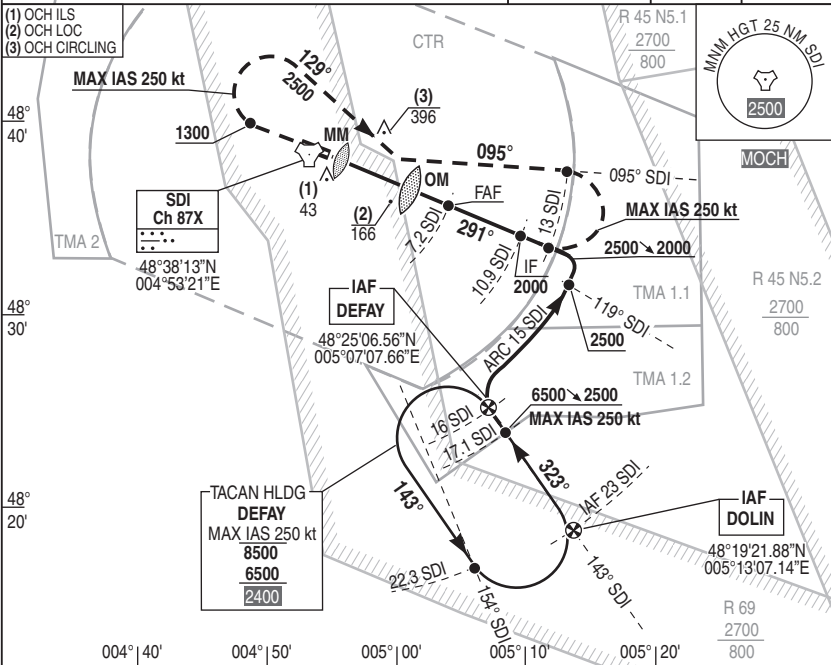
11 SAINT DIZIER ROBINSON LFSI

# NATIONAL FRA

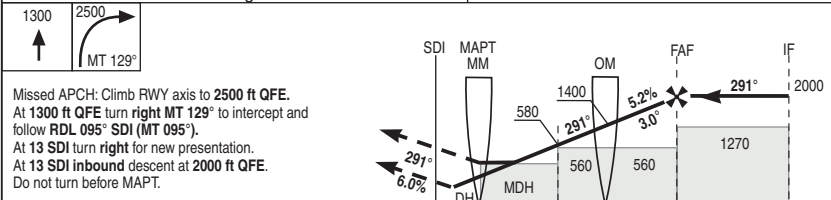
## INSTRUMENT APPROACH 10 SEP 2020 12 SAINT-DIZIER ROBINSON LFSI

ALT AD : 459 THR : 458 HPMA IAF DEFAY / DOLIN TACAN / ILS or LOC RWY 29

|  |                       |          |                 |
|--|-----------------------|----------|-----------------|
| APP : 134.775 - 142.450° - 399.050° (Recovery) - 388.800° (Climb) - 362.300° | ILS : SDI 108.9<br>⋯⋯ | RDH : 52 | VAR<br>2°E (20) |
| TWR : 134.775 (O/R) - 140.175 * - 374.875*                                   |                       |          |                 |
| GND : 122.100 - 257.800* * Reserved to MIL                                   |                       |          |                 |



ILS True Heading : 293.03 REF HGT : ALT THR in ft



|     |        |
|-----|--------|
| TAC | ← (NM) |
| THR | ← (NM) |

| CAT | ILS |     |     | LOC |      |     | CIRCLING |      |     | TACAN |     |      |      |      |   |
|-----|-----|-----|-----|-----|------|-----|----------|------|-----|-------|-----|------|------|------|---|
|     | DH  | RVR | OCH | MDH | RVR  | OCH | MDH      | VIS  | OCH | NM    | 3   | 4    | 5    | 6    | 7 |
| A   | 200 | 550 | 142 | 420 | 1200 | 412 | 700      | 1600 | 691 | 670   | 990 | 1300 | 1620 | 1940 |   |
| B   |     |     |     |     |      |     |          | 1600 |     |       |     |      |      |      |   |
| C   |     |     |     |     |      |     |          | 2400 |     |       |     |      |      |      |   |
| D/E |     |     |     |     |      |     |          | 3600 |     |       |     |      |      |      |   |

Remarks : VSS checked. DIRCAM

# NATIONAL FRA

## INSTRUMENT APPROACH

10 SEP 2020

## 13 SAINT-DIZIER ROBINSON LFSI

ALT AD : 459 THR : 458

HPMA IAF SAULX TACAN / ILS or LOC RWY 29

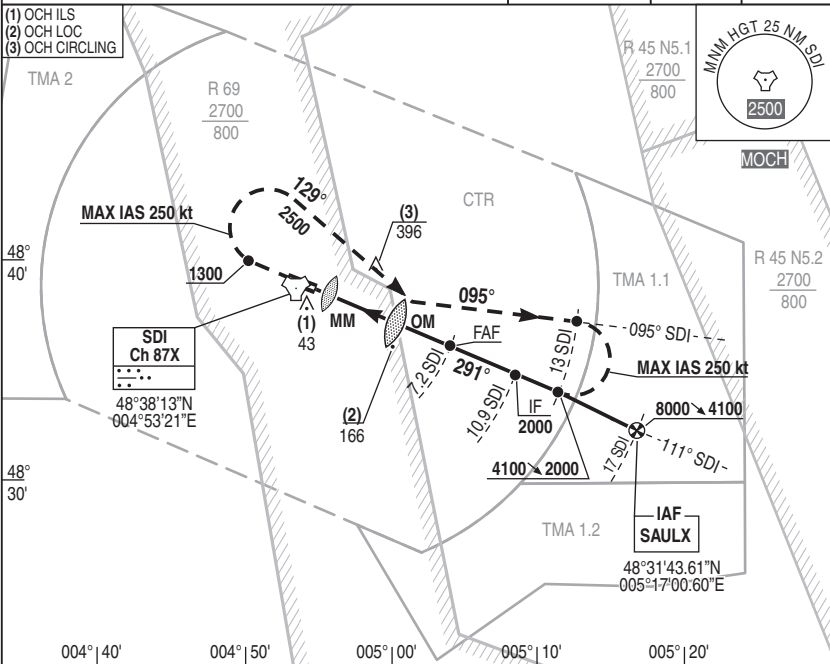
APP : 134.775 - 142.450\* - 399.050\* (Recovery) - 388.800\* (Climb) - 362.300\*  
 TWR : 134.775 (O/R) - 140.175\* - 374.875\*  
 GND : 122.100 - 257.800\* \* Reserved to MIL

ILS : SDI 108.9

RDH : 52

VAR 2°E (20)

- (1) OCH ILS
- (2) OCH LOC
- (3) OCH CIRCLING

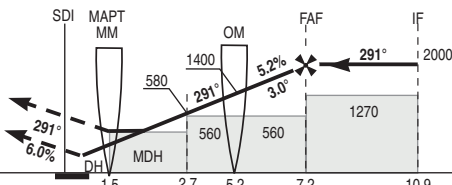


ILS True Heading : 293.03

REF HGT : ALT THR in ft



Missed APCH: Climb RWY axis to 2500 ft QFE.  
 At 1300 ft QFE turn right to intercept and follow RDL 095° SDI (MT 095°).  
 At 13 SDI turn right for new presentation.  
 At 13 SDI inbound descent at 2000 ft QFE.  
 Do not turn before MAPT.



TAC ← (NM)  
 THR ← (NM)

| CAT | ILS |     |     | LOC |      |     | CIRCLING |      |     | TACAN |     |      |      |      |   |
|-----|-----|-----|-----|-----|------|-----|----------|------|-----|-------|-----|------|------|------|---|
|     | DH  | RVR | OCH | MDH | RVR  | OCH | MDH      | VIS  | OCH | NM    | 3   | 4    | 5    | 6    | 7 |
| A   | 200 | 550 | 142 | 420 | 1200 | 412 | 700      | 1600 | 691 | 670   | 990 | 1300 | 1620 | 1940 |   |
| B   |     |     |     |     |      |     |          | 1600 |     |       |     |      |      |      |   |
| C   |     |     |     |     |      |     |          | 2400 |     |       |     |      |      |      |   |
| D/E |     |     |     |     |      |     |          | 3600 |     |       |     |      |      |      |   |

Remarks : VSS checked.

DIRCAM

HPMA IAF SAULX TACAN / ILS or LOC RWY 29

CHG : VAR.

13 SAINT DIZIER ROBINSON LFSI

# NATIONAL FRA INSTRUMENT APPROACH

# 14 SAINT-DIZIER ROBINSON LFSI RADAR / PAR RWY 29

ALT AD : 459 THR : 458

10 SEP 2020

RADAR / PAR RWY 29

APP : 134.775 - 142.450° - 399.050° (Recovery) - 388.800° (Climb) - 362.300°

TWR : 134.775 (O/R) - 140.175° - 374.875°

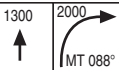
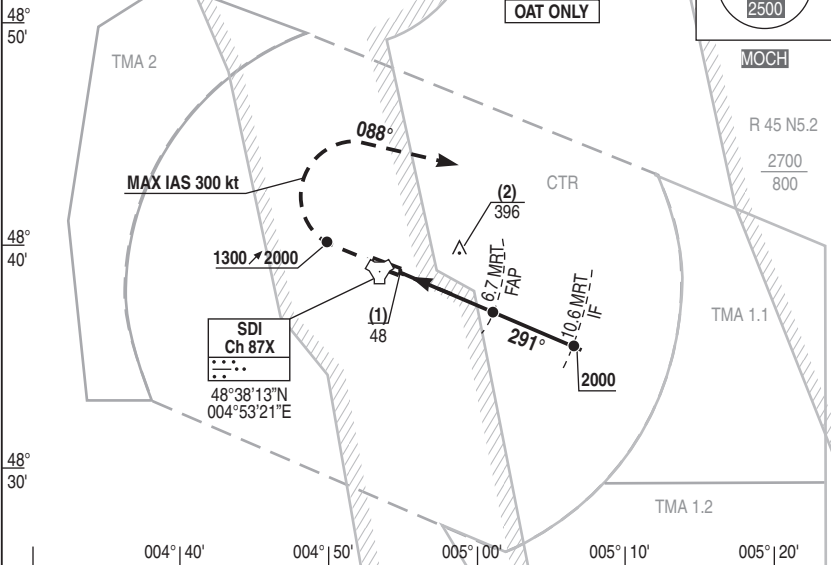
GND : 122.100 - 257.800° \* Reserved to MIL

RDH : 52

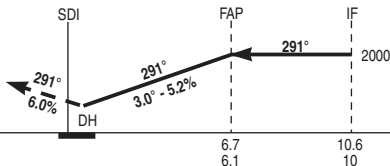
VAR  
2°E (20)

- (1) OCH PAR
- (2) OCH CIRCLING

R 69  
2700  
800



Missed APCH : Climb runway heading to 2000 ft QFE. At 1300 ft QFE turn right MT 088°. Then follow clearance.



MRT ← (NM)  
THR ← (NM)

| CAT | PAR |     |     | CIRCLING |      |     |
|-----|-----|-----|-----|----------|------|-----|
|     | DH  | RVR | OCH | MDH      | VIS  | OCH |
| A   | 200 | 550 | 147 | 700      | 1600 | 691 |
| B   |     |     |     |          | 1600 |     |
| C   |     |     |     |          | 2400 |     |
| D/E |     |     |     |          | 3600 |     |

Remarks :

DIRCAM

# NATIONAL FRA INSTRUMENT APPROACH

ALT AD : 459 THR : 458

10 SEP 2020

# 15 SAINT-DIZIER ROBINSON LFSI IAF LOUPY TACAN / PAR RWY 29

APP : 134.775 - 142.450° - 399.050° (Recovery) - 388.800° (Climb) - 362.300°  
 TWR : 134.775 (O/R) - 140.175° - 374.875°  
 GND : 122.100 - 257.800° \* Reserved to MIL

RDH : 52

VAR  
2°E (20)

- (1) OCH PAR
- (2) OCH CIRCLING

OAT ONLY

R 69  
2700  
800

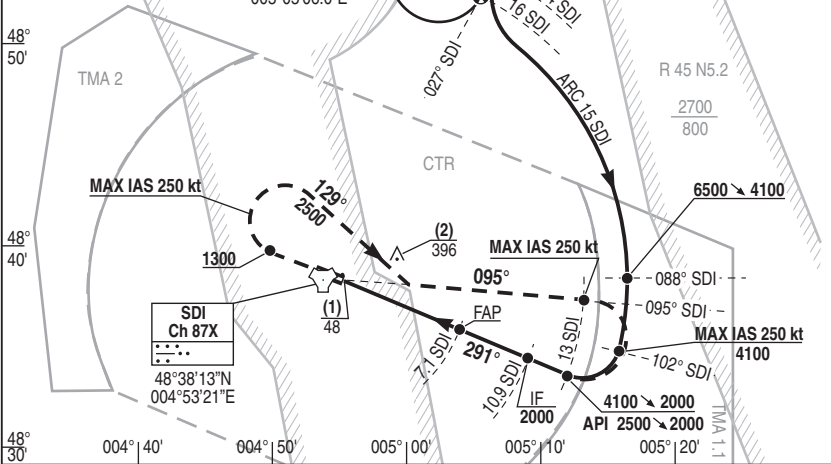
IAF  
LOUPY

48°52'11.6"N  
005°05'06.0"E

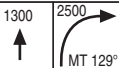
TACAN HLDG  
LOUPY  
MAX IAS 250 kt  
12000  
6500  
2100  
MAX IAS 250 kt



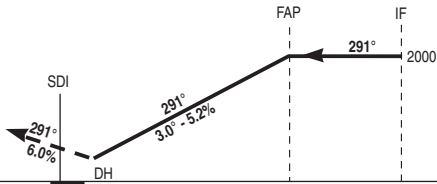
MOCH



REF HGT : ALT THR in ft



Missed APCH: climb straight ahead up to 2500 ft QFE.  
 At 1300 ft QFE turn right MT 129° to intercept and follow RDL 095° SDI (MT 095°).  
 At 13 SDI turn right for a new presentation.  
 At 13 SDI inbound descent at 2000 ft QFE.



TAC ← (NM)  
THR ← (NM)

7.1 10.9  
6.1 9.9

| CAT | PAR |     |     | CIRCLING |      |     |
|-----|-----|-----|-----|----------|------|-----|
|     | DH  | RVR | OCH | MDH      | VIS  | OCH |
| A   |     |     |     |          | 1600 |     |
| B   | 200 | 550 | 147 | 700      | 1600 | 691 |
| C   |     |     |     |          | 2400 |     |
| D/E |     |     |     |          | 3600 |     |

Remarks :

DIRCAM

IAF LOUPY TACAN / PAR RWY 29

CHG : VAR.

15 SAINT DIZIER ROBINSON LFSI



# NATIONAL FRA INSTRUMENT APPROACH

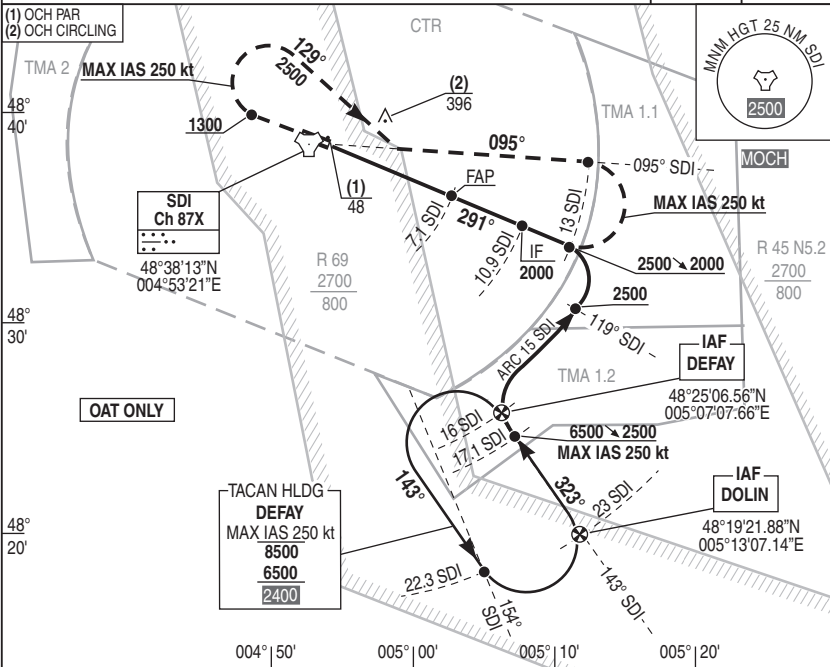
# 16 SAINT-DIZIER ROBINSON LFSI

ALT AD : 459 THR : 458 10 SEP 2020 IAF DEFAU / DOLIN TACAN / PAR RWY 29

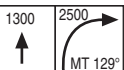
APP : 134.775 - 142.450° - 399.050° (Recovery) - 388.800° (Climb) - 362.300°  
 TWR : 134.775 (O/R) - 140.175 \* - 374.875°  
 GND : 122.100 - 257.800° \* Reserved to MIL

RDH : 52

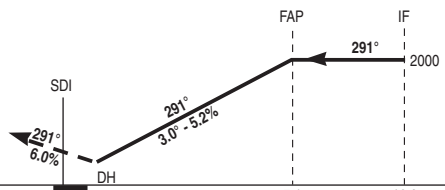
VAR  
2°E (20)



REF HGT : ALT THR in ft



Missed APCH: climb straight ahead up to 2500 ft QFE. At 1300 ft QFE turn right MT 129° to intercept and follow RDL 095° SDI (MT 095°). At 13 SDI turn right for a new presentation. At 13 SDI inbound descent at 2000 ft QFE.



TAC ← (NM)  
THR ← (NM)

FAP 7.1  
IF 10.9

DH 6.1 9.9

| CAT | PAR |     |     | CIRCLING |      |     |
|-----|-----|-----|-----|----------|------|-----|
|     | DH  | RVR | OCH | MDH      | VIS  | OCH |
| A   | 200 | 550 | 147 | 700      | 1600 | 691 |
| B   |     |     |     |          | 1600 |     |
| C   |     |     |     |          | 2400 |     |
| D/E |     |     |     |          | 3600 |     |

Remarks : DIRCAM

# NATIONAL FRA INSTRUMENT APPROACH

ALT AD : 459 THR : 458

10 SEP 2020

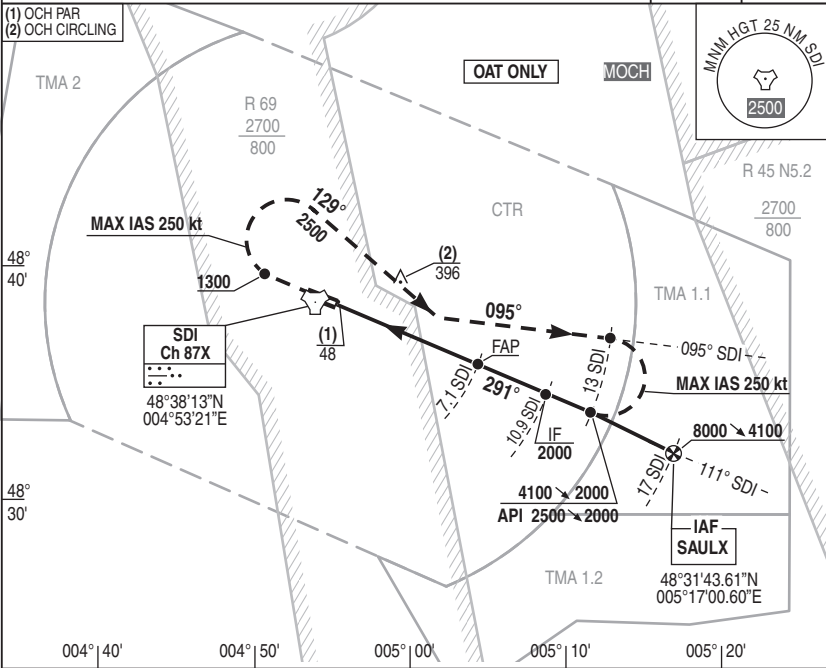
# 17 SAINT-DIZIER ROBINSON LFSI IAF SAULX TACAN / PAR RWY 29

APP : 134.775 - 142.450° - 399.050° (Recovery) - 388.800° (Climb) - 362.300°  
 TWR : 134.775 (O/R) - 140.175 \* - 374.875 \*  
 GND : 122.100 - 257.800 \* \* Reserved to MIL

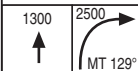
RDH : 52

VAR  
2°E (20)

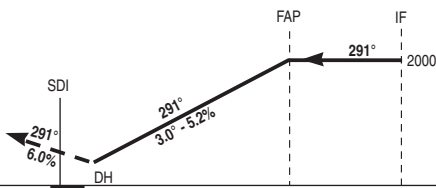
- (1) OCH PAR
- (2) OCH CIRCLING



REF HGT : ALT THR in ft



Missed APCH: climb straight ahead up to 2500 ft QFE. At 1300 ft QFE turn right MT 129° to intercept and follow RDL 095° SDI (MT 095°). At 13 SDI turn right for a new presentation. At 13 SDI inbound descent at 2000 ft QFE.



TAC ← (NM)  
 THR ← (NM)

7.1 10.9  
 6.1 9.9

| CAT | PAR |     |     | CIRCLING |      |     |
|-----|-----|-----|-----|----------|------|-----|
|     | DH  | RVR | OCH | MDH      | VIS  | OCH |
| A   |     |     |     |          | 1600 |     |
| B   | 200 | 550 | 147 | 700      | 1600 | 691 |
| C   |     |     |     |          | 2400 |     |
| D/E |     |     |     |          | 3600 |     |

Remarks :

DIRCAM

IAF SAULX TACAN / PAR RWY 29

CHG : VAR.

17 SAINT DIZIER ROBINSON LFSI

# NATIONAL FRA INSTRUMENT APPROACH

ALT AD : 459 THR : 458

10 SEP 2020

# 18 SAINT-DIZIER ROBINSON LFSI INS GNSS RWY 29

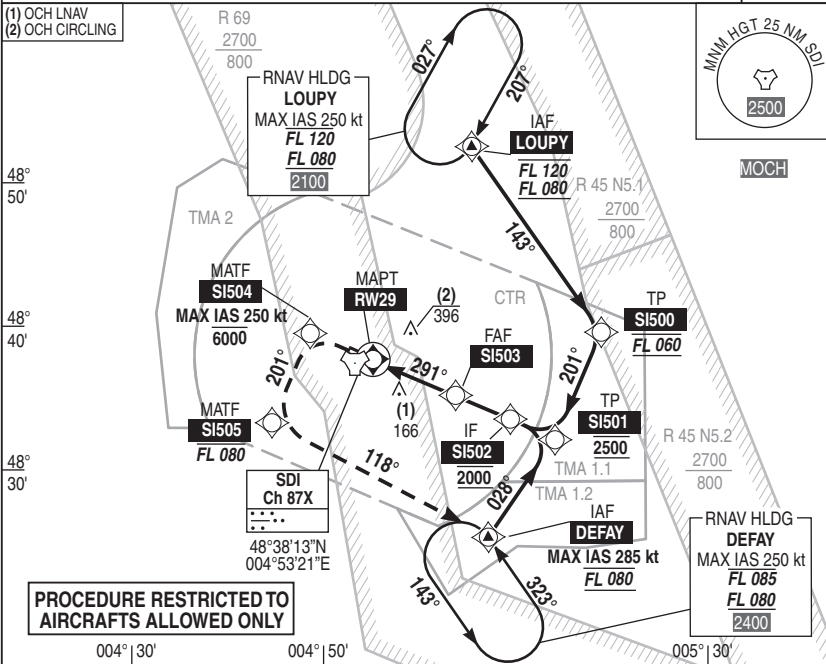
VAR  
2°E (20)

APP : 134.775 - 142.450° - 399.050° (Recovery) - 388.800° (Climb) - 362.300°

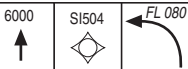
TWR : 134.775 (O/R) - 140.175° - 374.875°

GND : 122.100 - 257.800° \* Reserved to MIL

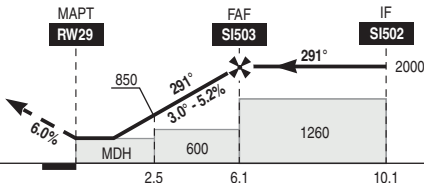
- (1) OCH LNAV
- (2) OCH CIRCLING



REF HGT : ALT THR in ft



Missed APCH : Climb to 6000 FT QFE inbound SI504, then continue climb to FL080 inbound SI505 and DEFAY.



THR ← (NM)

| CAT | LNAV |      |     | CIRCLING |      |     | DIST RW29 |      |      |      |   |   |
|-----|------|------|-----|----------|------|-----|-----------|------|------|------|---|---|
|     | MDH  | RVR  | OCH | MDH      | VIS  | OCH | NM        | 2    | 3    | 4    | 5 | 6 |
| A   | 420  | 1200 | 412 | 700      | 1600 | 691 | 2         | 3    | 4    | 5    | 6 |   |
| B   |      |      |     |          | 1600 |     | 1010      | 1320 | 1640 | 1960 |   |   |
| C   |      |      |     |          | 2400 |     |           |      |      |      |   |   |
| D/E |      |      |     |          | 3600 |     |           |      |      |      |   |   |

Remarks : VSS checked.

DIRCAM

INS GNSS RWY 29

CHG : VAR.

18 SAINT DIZIER ROBINSON LFSI

# 19 SAINT DIZIER ROBINSON LFSI

## DATA INS GNSS RWY 29

10 SEP 2020

| TABLE FOR DATA INDICATOR |        |       |                              | LFSI INS GNSS RWY29 - MAG VAR 1.8°E (20) |           |                            |      |                       |                       |              |
|--------------------------|--------|-------|------------------------------|--|-----------|----------------------------|------|-----------------------|-----------------------|--------------|
| N° SEQ                   | CODING | IDENT | COORDINATES                  | TYPE                                     | DIST (NM) | MAG TRACK (TRUE TRACK) (°) | TURN | MIN HGT or LEVEL (FT) | MAX HGT or LEVEL (FT) | MAX IAS (KT) |
| 10                       | HM     | LOUPY | 48°52'11.6"N 005°05'06.0"E   | FO                                       |           | 207 (209,0)                | R    | FL80                  | FL120                 | 250          |
| 10                       | IF     | LOUPY | 48°52'11.6"N 005°05'06.0"E   | FB                                       |           |                            |      | FL80                  | FL120                 | 300          |
| 20                       | TF     | SI500 | 48°39'49.2"N 005°18'09.9"E   | FB                                       | 15,1      | 143 (145,0)                | R    | FL60                  | FL60                  | 300          |
| 30                       | TF     | SI501 | 48°32'36.4"N 005°13'33.2"E   | FB                                       | 7,8       | 201 (203,0)                | R    | 2500                  | 2500                  | 250          |
| 10                       | HM     | DEFAY | 48°25'06.6"N 005°07'07.7"E   | FO                                       |           | 323 (325,0)                | L    | FL80                  | FL80                  | 250          |
| 10                       | IF     | DEFAY | 48°25'06.6"N 005°07'07.7"E   | FB                                       |           |                            |      | FL80                  | FL80                  | 285          |
| 20                       | TF     | SI501 | 48°32'36.4"N 005°13'33.2"E   | FB                                       | 8,6       | 028 (029,6)                | L    | 2500                  | 2500                  | 300          |
| 10                       | IF     | SI501 | 48°32'36.4"N 005°13'33.2"E   | FB                                       |           |                            |      | 2500                  | 2500                  | 300          |
| 20                       | TF     | SI502 | 48°33'55.9"N 005°08'53.9"E   | FB                                       | 3,4       | 291 (293,2)                |      | 2000                  | 2000                  | 300          |
| 30                       | TF     | SI503 | 48°35'30.3"N 005°03'21.7"E   | FB                                       | 4,0       | 291 (293,2)                |      | 2000                  | 2000                  |              |
| 40                       | TF     | RW29  | 48°37'54.35"N 004°54'52.11"E | FO                                       | 6,1       | 291 (293,1)                |      | 420                   |                       |              |
| 50                       | TF     | SI504 | 48°39'41.9"N 004°48'29.8"E   | FB                                       | 4,6       | 291 (293,0)                | L    |                       | 6000                  | 250          |
| 60                       | TF     | SI505 | 48°33'41.2"N 004°44'39.2"E   | FB                                       | 6,5       | 201 (203,0)                | L    |                       | FL80                  | 300          |
| 70                       | TF     | DEFAY | 48°25'06.6"N 005°07'07.7"E   | FB                                       | 17,2      | 118 (119,7)                |      | FL80                  | FL80                  | 285          |

**LEGEND :** TF : Track to a Fix DF : Direct to a Fix CF : Course to a Fix CH : Course to a height FO : Fly Over FB : Fly By

**DIRCAM**

NATIONAL FRA  
INSTRUMENT DEPARTURE

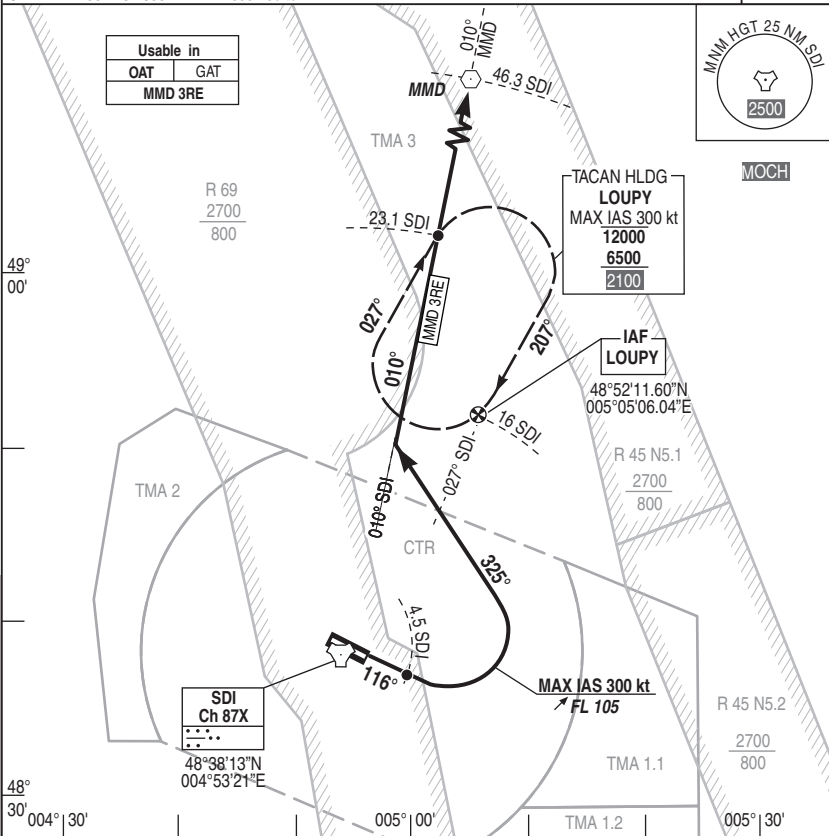
SID 01 SAINT DIZIER ROBINSON LFSI  
DEPARTURE SI MMD 3RE RWY 11

ALT AD : 459 THR : 444

05 NOV 2020

APP : 134.775 - 142.450\* - 399.050\* (Recovery) - 388.800\* (Climb) - 362.300\*  
TWR : 134.775 (O/R) - 140.175\* - 374.875\*  
GND : 122.100 - 257.800\* \* Reserved to MIL

VAR  
2°E (20)



**DEPARTURE MMD 3RE :** Climb MT 116° up to **FL 105** (1).  
At 4.5 SDI turn left MT 325° to intercept and follow  
**RDL 010° SDI (MT 010°)** to MMD.

(1) ATS climb slope 9% up to 6500 ft QFE then 8.75%.

**MAX IAS 300 kt**

REF HGT : ALT THR in ft

Instruction :  
If no handover, join the holding pattern at 23.1 SDI.  
Reduce 250 kt for approach procedure.

**DIRCAM**

NATIONAL FRA  
INSTRUMENT DEPARTURE

SID 02 SAINT DIZIER ROBINSON LFSI

ALT AD : 459 THR : 444

05 NOV 2020

DEPARTURE SI RLP 2RE RWY 11

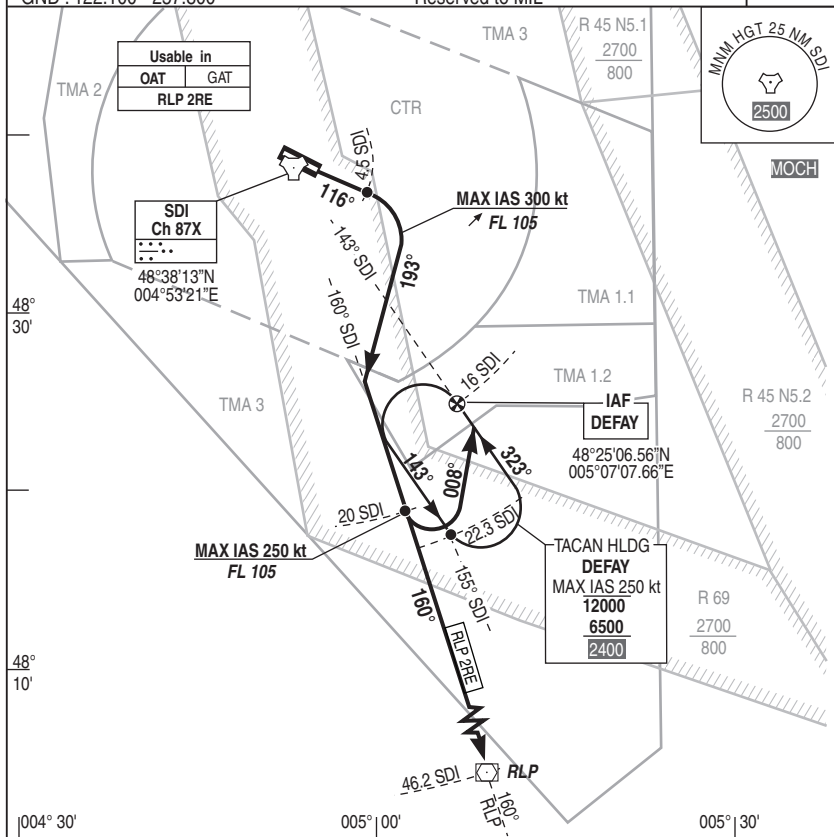
APP : 134.775 - 142.450\* - 399.050\* (Recovery) - 388.800\* (Climb) - 362.300\*

TWR : 134.775 (O/R) - 140.175\* - 374.875\*

GND : 122.100 - 257.800\*

\* Reserved to MIL

VAR  
2°E (20)



REF HGT : ALT THR in ft

DEPARTURE RLP 2RE :  
Climb MT 116° up to FL 105 (1).  
At 4.5 SDI turn right MT 193° to intercept and follow  
RDL 160° SDI (MT 160°) to RLP.

If no handover:  
At 20 SDI, RDL 160° SDI, FL 105 reduce 250 kt, turn left  
MT 008° to intercept and follow RDL 143° SDI (MT 323°)  
then join holding pattern.

(1) ATS climb slope 10% up to 6500 ft QFE then 8.75%.

MAX IAS 300 kt

DIRCAM

DEPARTURE SI RLP 2RE RWY 11

CHG : Pagination.

SID 02 SAINT DIZIER ROBINSON LFSI

NATIONAL FRA  
INSTRUMENT DEPARTURE

SID 03 SAINT DIZIER ROBINSON LFSI  
DEPARTURE SI MMD 3RW RWY 29

ALT AD : 459 THR : 458

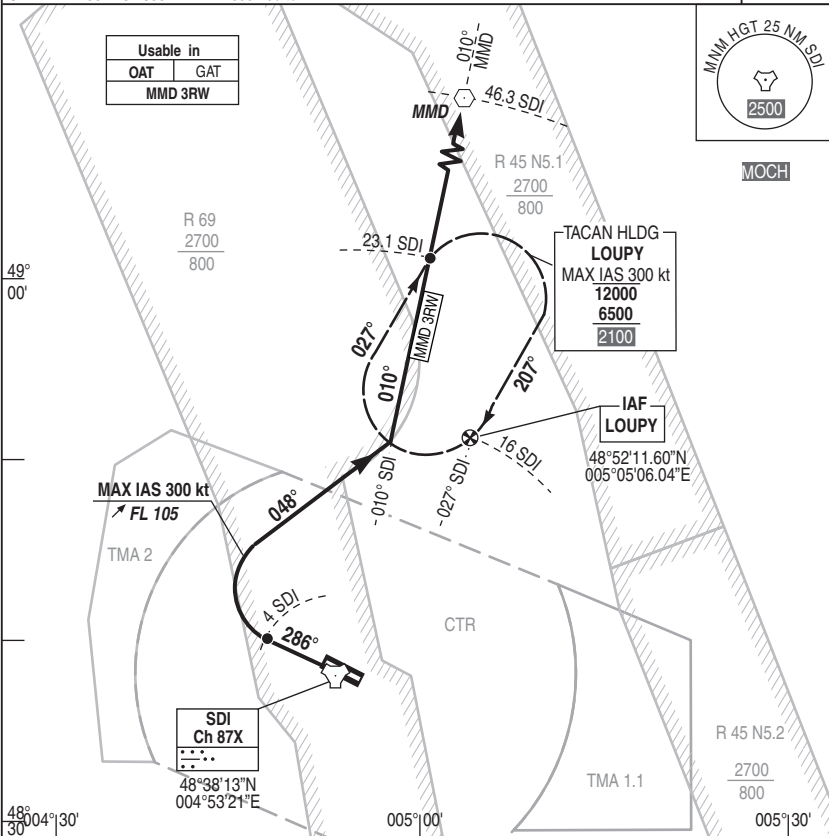
05 NOV 2020

APP : 134.775 - 142.450° - 399.050° (Recovery) - 388.800° (Climb) - 362.300°

TWR : 134.775 (O/R) - 140.175° - 374.875°

GND : 122.100 - 257.800° \* Reserved to MIL

VAR  
2°E (20)



**DEPARTURE MMD 3RW** : Climb MT 286° up to **FL 105** (1).  
At **4 SDI**, turn **right** MT 048° to intercept and follow **RDL 010° SDI** (MT 010°) to **MMD**.

(1) ATS climb slope 9% up to 6500ft QFE then 8.75%.

**MAX IAS 300 kt**

REF HGT : ALT THR in ft

Instruction :  
If no handover, join the holding pattern at **23.1 SDI**.  
Reduce 250 kt for approach procedure.

**DIRCAM**

NATIONAL FRA  
INSTRUMENT DEPARTURE

SID 04 SAINT DIZIER ROBINSON LFSI

ALT AD : 459 THR : 458

05 NOV 2020

DEPARTURE SI RLP 2RW RWY 29

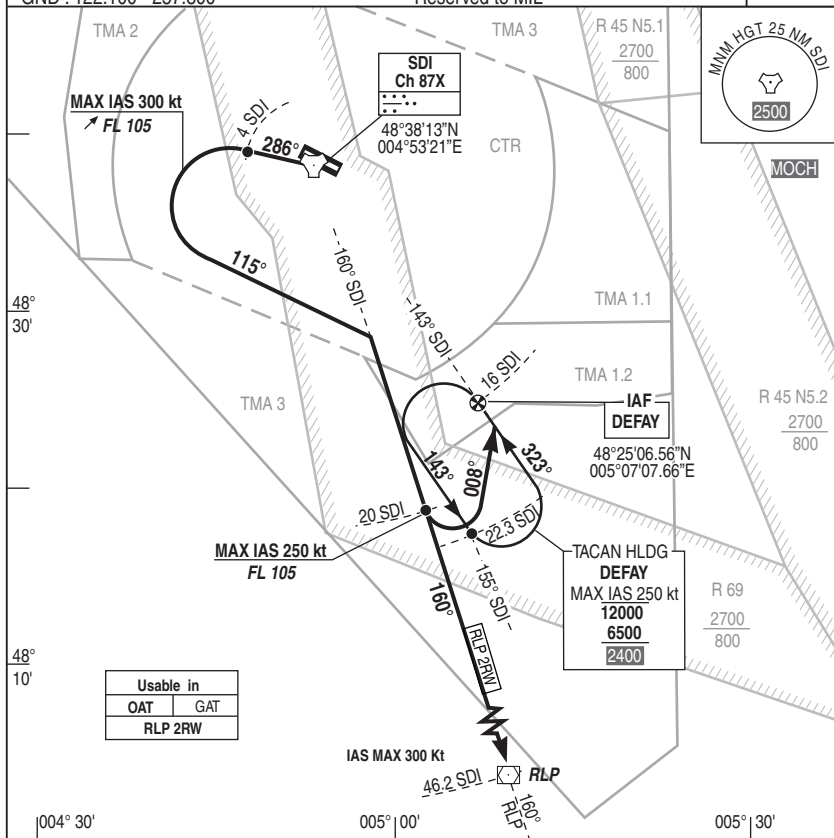
APP : 134.775 - 142.450\* - 399.050\* (Recovery) - 388.800\* (Climb) - 362.300\*

TWR : 134.775 (O/R) - 140.175\* - 374.875\*

GND : 122.100 - 257.800\*

\* Reserved to MIL

VAR  
2°E (20)



| Usable in |     |
|-----------|-----|
| OAT       | GAT |
| RLP 2RW   |     |

REF HGT : ALT THR in ft

DEPARTURE RLP 2RW : Climb MT 286° up to FL 105 (1).  
At 4 SDI turn left MT 115° to intercept and follow RDL 160° SDI (MT 160°) to RLP.

- (1) ATS climb slope 10%(2) up to 6500 ft QFE then 8.75%.
- (2) If impossibility to maintain ATS climb slope, radar monitoring mandatory.

MAX IAS 300 kt

If no handover :  
At 20 SDI, RDL 160° SDI, FL 105 reduce 250 kt,  
turn left MT 008° to intercept and follow  
RDL 143° SDI (MT 323°) then join holding pattern.

DIRCAM

DEPARTURE SI RLP 2RW RWY 29

CHG : Pageation.

SID 04 SAINT DIZIER ROBINSON LFSI