

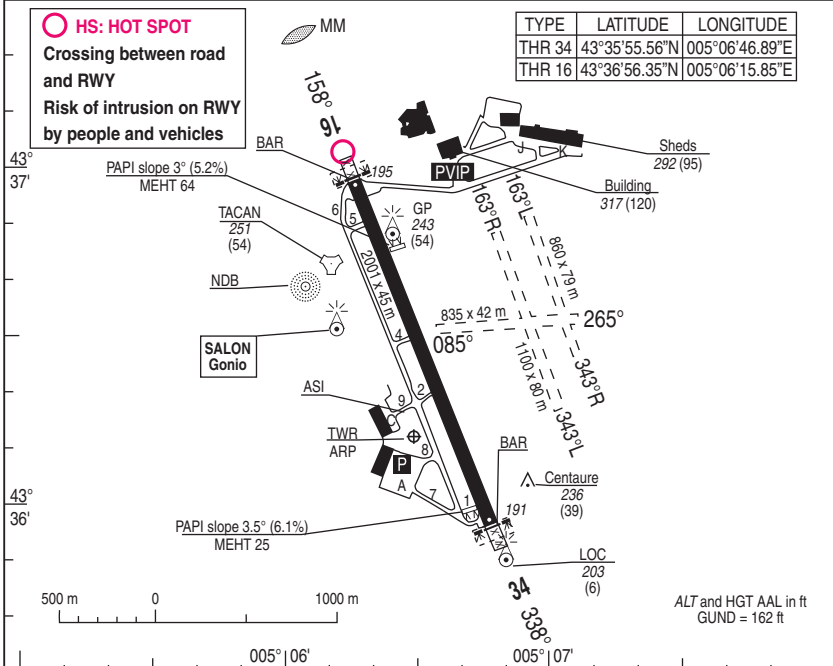
NATIONAL FRA AERODROME CHART

11 AUG 2022

01 SALON LFMY

ALT AD : 197 (7 hPa)

VAR : 2°E (20)



RWY	LIGHTING		DECLARED DISTANCES				Surface Strength	MINIMUMS TKOF (RVR in m)		
	APPROACH	RWY	TORA	TODA	ASDA	LDA		CAT A	CAT B	CAT C
16	NIL	HI / BI	1951	2001	1951	1951	Paved	3000	3000	3000
34	NIL	HI / BI					41 F/C/W/T			

MARKING

- Day lighting: HI/BI -flashing lights RWY 16/34

DIRCAM

DV (Flight Director) : 04 90 17 81 99

USE RESTRICTIONS

- AD prohibited to armed ACFT.
- AD only usable by day and visually.
- AD restricted use (see AIP LFMY AD 2.20) and GAT ACFT – East side of AD reserved to GLD, remote controlled UAV, air school light ACFT.
- Fixed mandatory circuit speed: 180 kt – Training slots for the 'PATROUILLE DE FRANCE'
- Outside R71 activity HOR, OAT ARR and DEP must be made under IST CTL

OTHER INFORMATION

- AD located in a high level ornithological area
- French BAR type F30 RWY 16/34 (O/R automatic)
- If rain RWY SLIPPERY
- Simultaneous use of TWY and RWY is the object of a particular taxiing plan. See MILAIP LFMY AD 2.20.

PARTICULAR INSTRUCTIONS

- Whatever RWY in use WEST circuit
- IFR / GAT DEP : visual DEP until radar vectoring according to HMG.
- HIGH POWER line North AD

REFUELING

- F18- F34

ATS HOR

- MON-THU : 0700-1600.
- FRI : 0700-1400
- SAT, SUN, HOL : Actual activity known on SALON APP or RAI 135.150 Mhz
- SUMMER -1Hr

DIRCAM

VISUAL ARR & DEP

ALT AD : 197 (7 hPa)

21 APR 2022

02 SALON LFMY

JET RWY16 & 34

APP : 135.150 - 142.450 -

372.800 (Recovery) - 370.700 (Climb)

TWR : 122.100 - 130.300 - 232.125

AD FAF restricted use

4 Km S from SALON

Flight director (DV) : 04.90.17.81.99

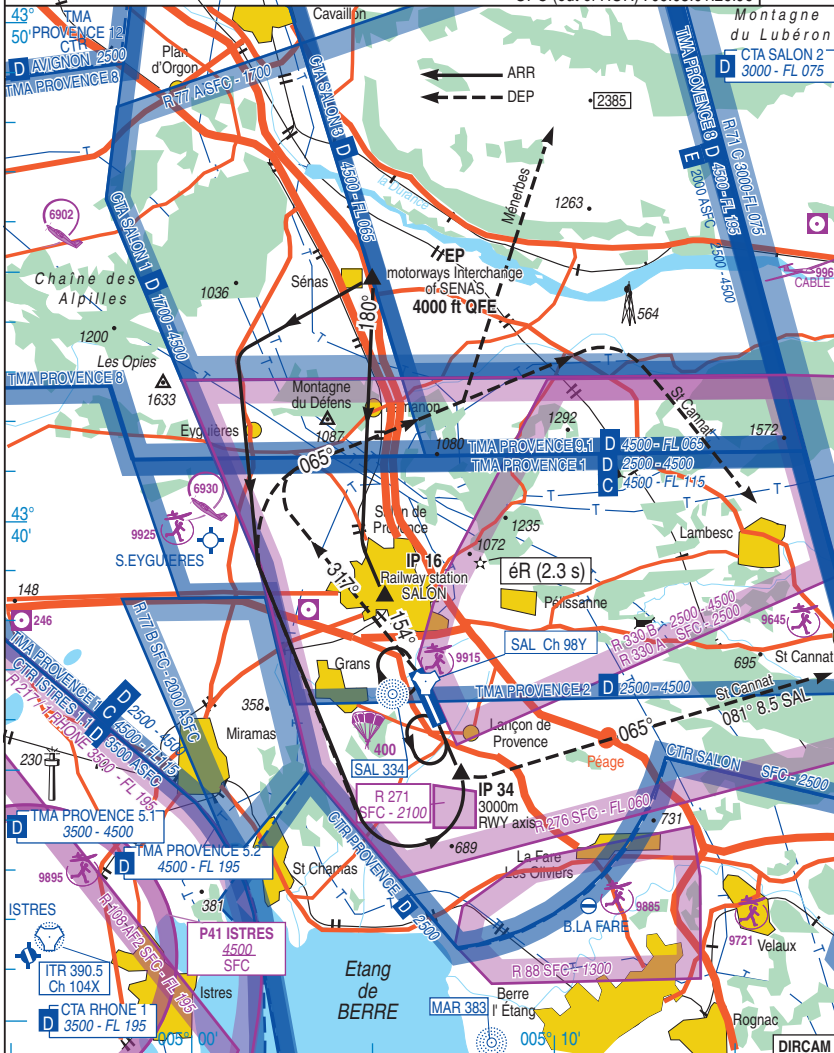
Supervisor : 04.90.17.83.94

OPC (out of HOR) : 06.03.01.26.96

VAR

2°E

(20)



CHG : R 330 A / B.

02 SALON LFMY

03 DEC 2020

VISUAL ARRIVAL AND DEPARTURE INSTRUCTIONS

Airspace restriction :Refer to AIP FRANCE

ARRIVAL

All end users must be advise of the complexity of all airspaces and visual circuits used by flying school of SALON. Consequently :

- APP contact is mandatory before entering LFR 77.
- The knowledge of the circuits is essential.
- Speed 300 Kt MAX.

LANDING CIRCUIT

ENTRY POINT : SENAS motorway Interchange - **43°44'44"N 005°05'06"E** - 4000 ft QFE, 300 Kt MAX.

RWY 16 :

- Descent to 2500 ft QFE on course to IP 16 via LAMANON (abeam EAST LAMANON, announce "LAMANON, QFE...").

RWY 34 :

- Heading to « les OPIES ». Fly round west EYGUIERES village.
- Across West EYGUIERES descent to 2500 ft QFE announce " HIPPODROME 2500 ft ".

BREAK : - In all case, break is made WEST side at 2500 ft QFE.

DEPARTURE :**RWY 16 :**

- After TKOF, maintain 500 ft QFE and RWY axis till EDF canal, then climb to 1000 ft QFE on RWY axis.
- EAST departure: turn LEFT on course to SAINT CANNAT climbing to 3000 ft QFE.
- NORTH and WEST : turn RIGHT and maintain level 2000 ft QFE till hippodrome.
- Then proceed as mentioned for RWY 34 departure.

RWY 34 : Noise Abatement Procedure (NAP)

- After TKOF heading 320° and maintain 500 ft QFE .
- Flying over motorway, climb to 3000 ft QFE.
- At 6 NM TACAN SAL, turn RIGHT and fly across AMV axis steady level 3000 ft QFE , on heading to MALLEMORT.

DIRCAM

NATIONAL FRA
ALT AD : 197 (7 hPa)

23 APR 2020

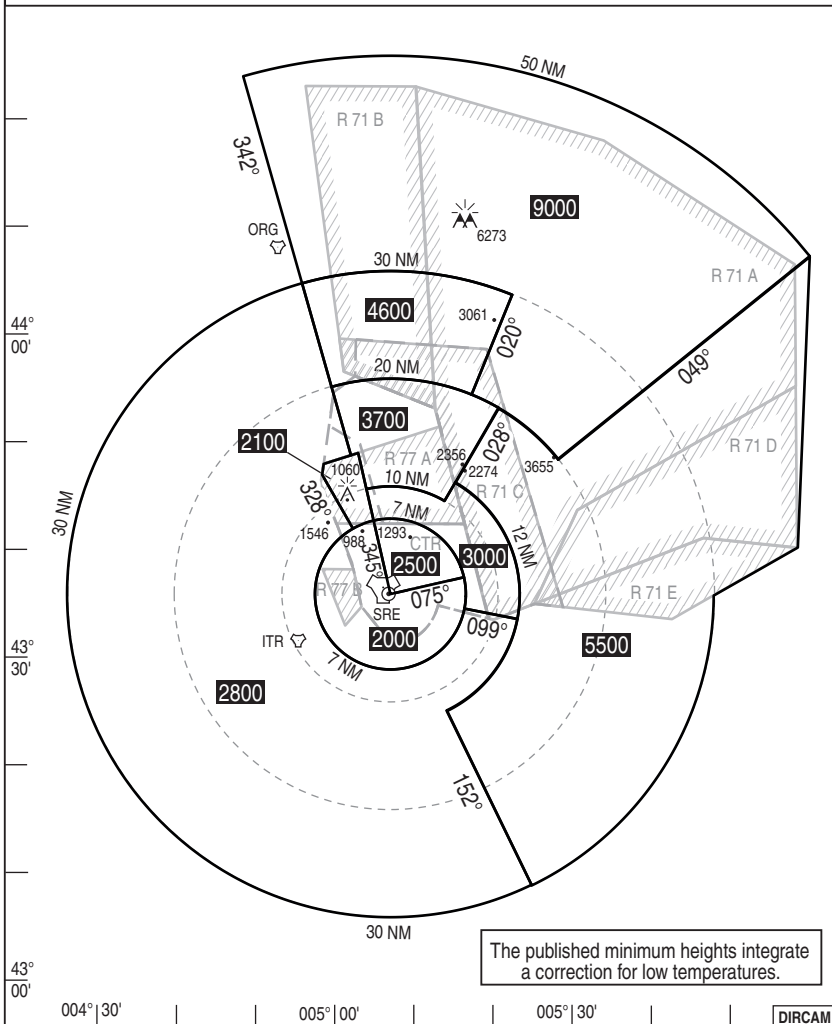
04 SALON LFMY
HMG

APP : 135.150 - 370.700 (Climb) - 372.800 (Recovery)

TWR : 122.100 - 130.300 - 232.125

VAR
2° E
(20)

COMMUNICATION FAILURE : Apply french national regulation.



The published minimum heights integrate a correction for low temperatures.

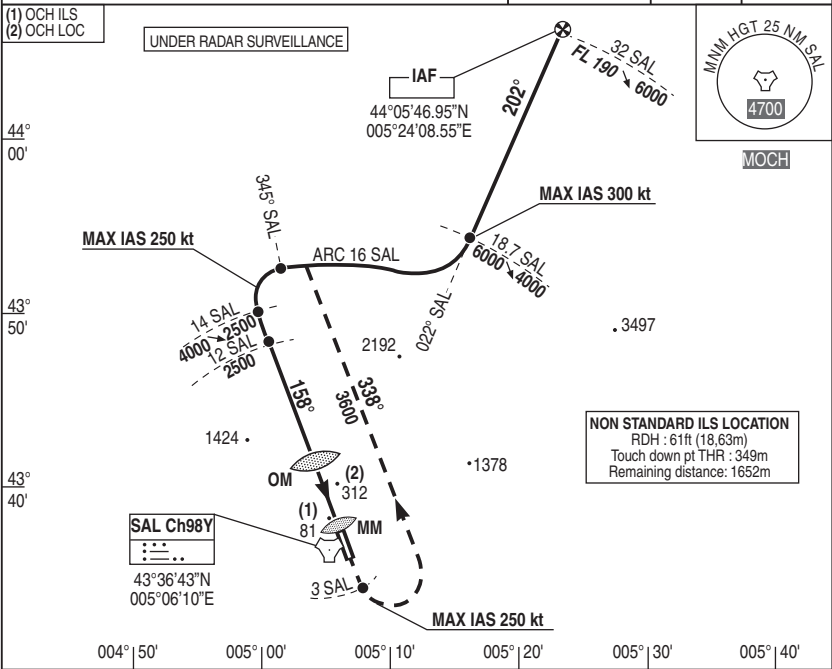
NATIONAL FRA INSTRUMENT APPROACH

ALT AD : 197 THR : 195

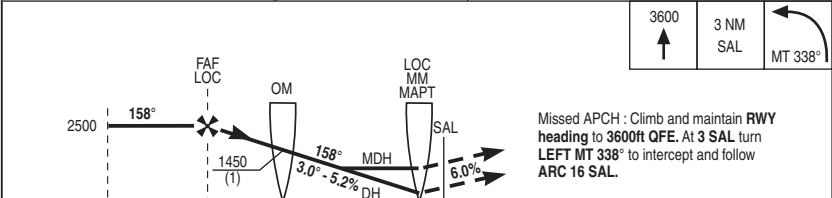
23 APR 2020

05 SALON LFMY
TACAN / ILS RWY 16

APP : 135.150 - 370.700 (Climb) - 372.800 (Recovery)	ILS : SAL 110.9 ⋮⋮⋮	RDH : 61	VAR 2°E (20)
TWR : 122.100 - 130.300 - 232.125			



ILS True heading : 159.64° REF HGT : ALT THR in ft



12 7.9 4.6 0.7
7.7 4.4 0.5

CAT	ILS			LOC			ILS - TACAN							
	DH	RVR	OCH	MDH	RVR	OCH	NM	7	6	5	4.6	4	3	2
A	250	1300	180	480	1500		7	6	5	4.6	4	3	2	
B					1500									
C					2200	476								
D/E					2200									

Remarks : (1) Minimum height is mandatory. DIRCAM

TACAN / ILS RWY 16 CHG : Normalisation, VAR. 05 SALON LFMY

NATIONAL FRA INSTRUMENT APPROACH

ALT AD : 197 THR : 195

23 APR 2020

06 SALON LFMY
TACAN RWY 16

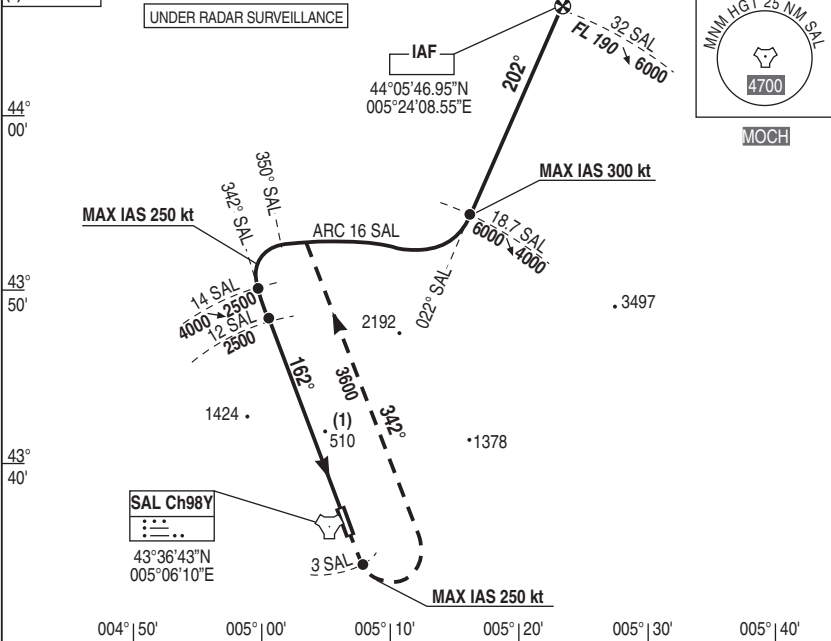
APP : 135.150 - 370.700 (Climb) - 372.800 (Recovery)

VAR
2°E (20)

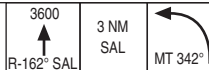
TWR : 122.100 - 130.300 - 232.125

(1) OCH TACAN

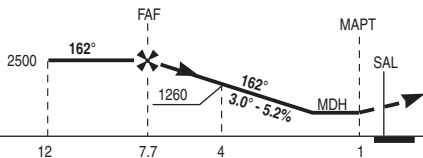
UNDER RADAR SURVEILLANCE



REF HGT : ALT THR in ft



APCH not in RWY axis



Missed APCH : Climb on RDL 162° SAL to 3600 ft QFE. At 3 SAL, turn LEFT MT 342° to intercept ARC 16 SAL.

CAT	TACAN		
	MDH	RVR	OCH
A	700	1500	697
B		1500	
C		2200	
D/E		2200	

Remarks :

DIRCAM

TACAN RWY 16

CHG : Normalisation, VAR.

06 SALON LFMY

