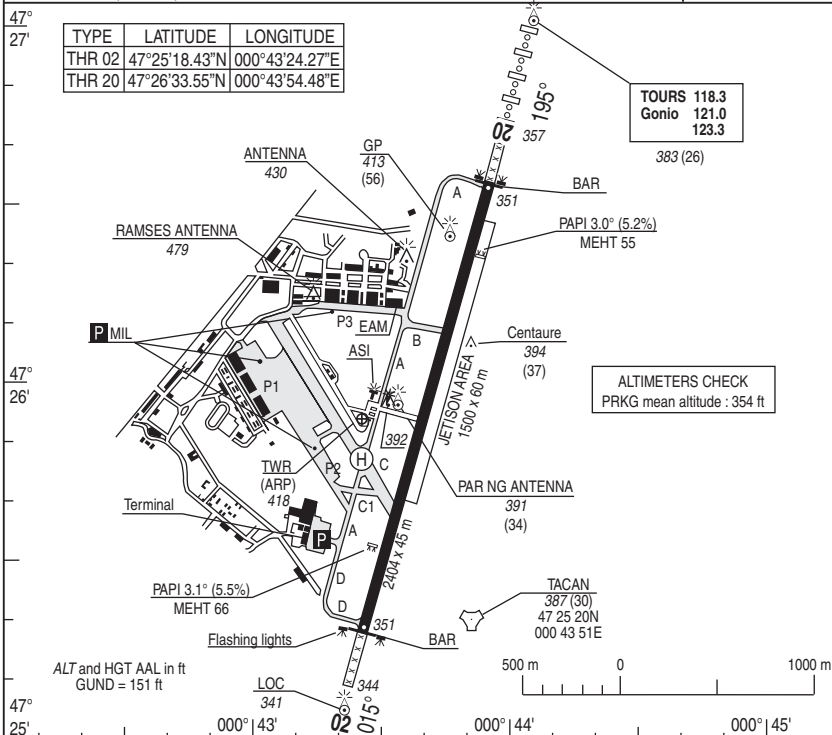


NATIONAL FRA AERODROME CHART

05 NOV 2020

01 TOURS VAL DE LOIRE LFOT

ALT AD : 357 (13 hPa) VAR : 0° (15)



RWY	LIGHTING		DECLARED DISTANCES				Surface Strength	MINIMUMS TKOF (RVR in m)	
	APPROACH	RWY	TORA	TODA	ASDA	LDA		CAT A. B. C	CAT D. E
02	NIL	HI / BI	2404	2404	2404	2404	Concrete	550	550
20	HI 900m	HI / BI	2404	2404	2404	2404	38 R/C/W/T	550	550

OMNIDIRECTIONAL DEPARTURES

RWY 02 : (Alt THR : 351) CLIMB MT 015° at 11.1% (1) up to 500 then direct route up to enroute safety altitude.

RWY 20: (Alt THR : 351) **EAST WARD** departures : Climb MT 195° at 11.1% (1) up to 500 then MT 148° climbing to 2000 then direct route up to enroute safety altitude. Do not turn before DER.

WEST WARD departures : Climb MT 195° at 11.1% (1) up to 500 then MT 148° climbing to 5000 then direct route up to enroute safety altitude. Do not turn before DER.

(1) ATS slope : Initial climb disregard obstacle 38 ft at 74 m left of DER.

MARKINGS - LIGHTINGS :

- Day lighting: HI APP line RWY20 (900 m). HI/BI RWY 02/20
- RWY 20: PAPI (3.0° - 5.2%) 370 m from threshold.
- RWY 02: PAPI (3.1° - 5.5%) 388 m from threshold.
- TWY - ASI

DIRCAM

DV (Flight director): 02 47 85 82 00 poste 23020 ou 02 47 85 83 39

USE RESTRICTIONS

- All MIL ACFT: LAND to be submitted to Flight supervisor 02 47 85 83 30 or PNIA 811 705 2335 before 16H00 loc (before 14H00 loc the last previous opened day for WE and days off)
- PPR number must be written in the FPL case 18
- Forbidden T/O and LAND for fighters between 12H00 & 14H00 loc.
- Closed patrol T/O RWY 20 forbidden for Fighters
- After omnidirectional departure, plan AMB or LUTIL (first point in FPL route text field)
- For FPL with destination LFOT, pilots had to finish FPL route text field with AMB.
- RWY entry by strip C is prohibited day and night.

OTHER INFORMATION

- BAR RWY 02/20

REFUELING

- F34 / Oxygen / O150 - O156 - O162

ATS HOR

- Mon/Thu (MIL): 0700/1600. Friday: 0700/1400 SUMMER (-1 Hr).
Activity report on TOURS APP or RAI Freq: 121.0.

DIRCAM

VISUAL ARR & DEP

ALT AD : 357 (13 hPa)

03 DEC 2020

02 TOURS VAL DE LOIRE LFOT

JET RWY 02

APP : 121.100 - 142.450 - 240.975

TWR : 122.100 - 124.400 - 344.225

AD FAF opened to GAT

6 Km NNE from TOURS

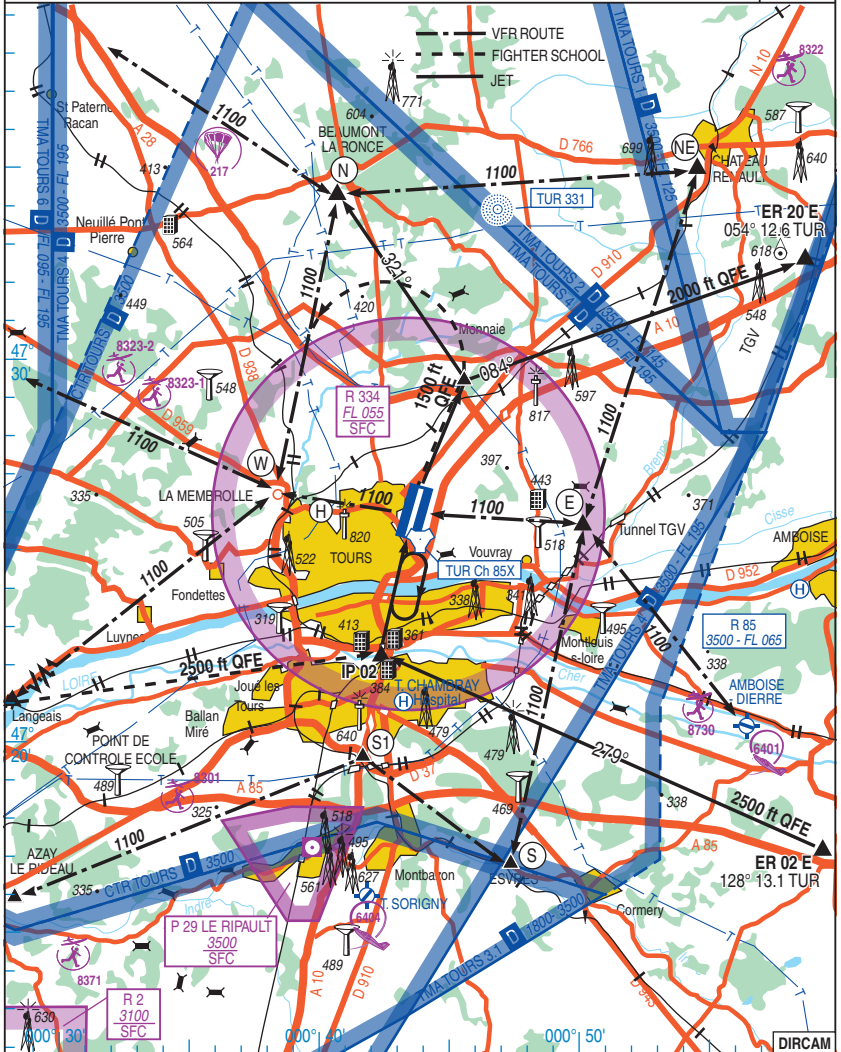
TEL : 02.47.85.82.00 APP ext : 23815

TWR ext : 24257

VAR

0°

(15)



JET RWY 02

CHG : HEL.

02 TOURS VAL DE LOIRE LFOT

VISUAL ARR & DEP

ALT AD : 357 (13 hPa)

03 DEC 2020

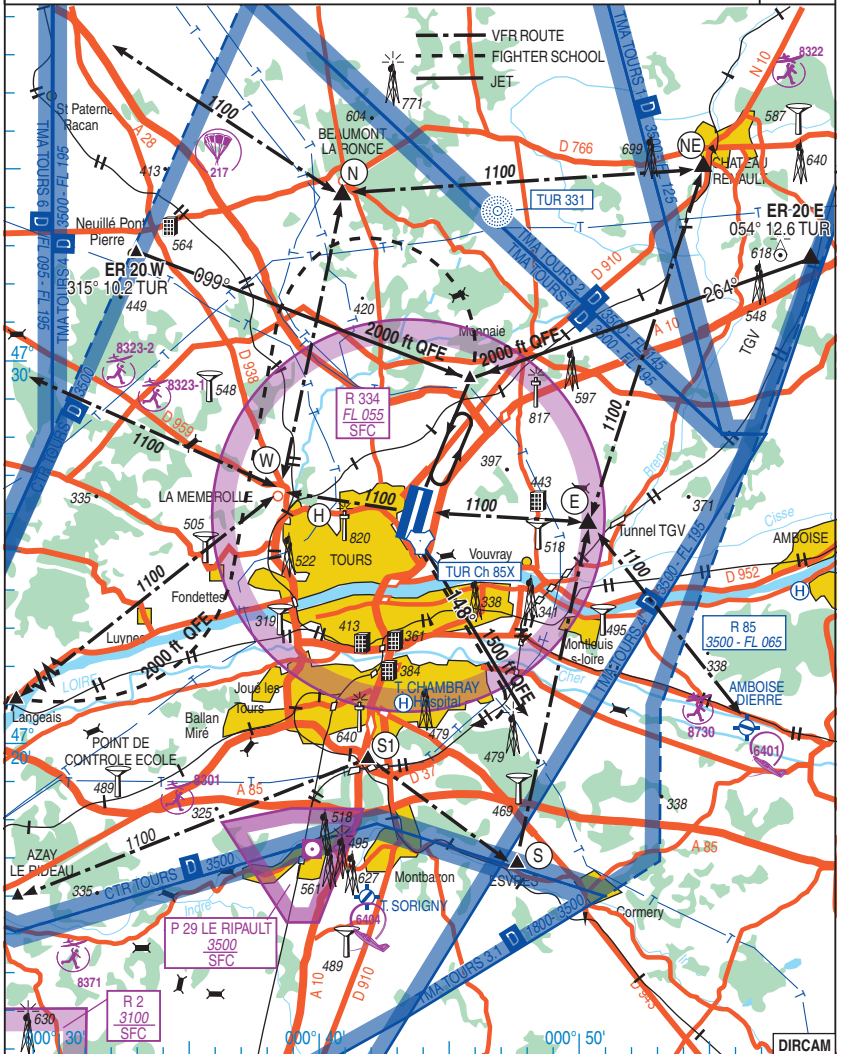
03 TOURS VAL DE LOIRE LFOT

JET RWY 20

APP : 121.100 - 142.450 - 240.975
TWR : 122.100 - 124.400 - 344.225

AD FAF opened to GAT
6 Km NNE from TOURS
TEL : 02.47.85.82.00 APP ext : 23815
TWR ext : 24257

VAR
0°
(15)



JET RWY 20

CHG : HEL.

03 TOURS VAL DE LOIRE LFOT

DIRCAM

VISUAL ARR & DEP INSTRUCTIONS

Airspace restriction : Refer to AIP FRANCE or French Defense 1/1.000.000 aeronautical chart Instructions.

ARRIVALS :

Radio contact mandatory with TOURS APP (CH 5) 3 MIN before entry points to obtain last AFLD information. Switch over TOURS TWR only under APP order :

RWY 02 :ER 02 E (128°/13.1 NM TACAN TUR)

Heading 279° between ER 02 E and IP 02 steady 2500 ft QFE.

At initial 02, precise your intentions (Full stop landing, pull up, etc) and maintain 2500 ft QFE till Loire river then descent to 1500 ft QFE for break.

Break 1500 ft QFE East side.

RWY 20 : ER 20 E (054°/12.6 NM TACAN TUR)

Heading 264° between ER 20 E and IP 20 steady at 2000 ft QFE.

At initial 20, precise your intentions (Full stop landing, pull up, etc)

Break at 1500 ft QFE East side.

ER 20 W (315°/10.2 NM TACAN TUR)

Heading 099° between l'ER 20 W and IP 20 steady at 2000' QFE.

At initial 20, precise your intentions (Full stop landing, pull up, etc)

Break at 1500 ft QFE East side.

DEPARTURES :**RWY 02** : Climb and maintain RWY axis to 1500 ft QFE.

Across MONNAIE (3,5 NM TACAN), turn : -East departure - Right heading 084°,
-West departure - Left heading 321°.

Report exiting CTR.

RWY 20 : End of RWY, turn left heading 148° climbing to 1500 ft QFE (avoid TOURS city).

Report exiting CTR.

REPORT POINTS

IP 02 (Railway bridge over Cher River)

QFU axis / 3.5 NM TUR 85X

IP 20 (Castle Les Belles Ruries)

QFU axis / 4.5 NM TUR 85X

PARTICULAR NOTICE

During school training activity, you can be subjected to hold at limit of the area: Consequently pilots must manage fuel carefully depending on this fact.

Nota : School ACFT fly particular routes (normal circuit, long circuit) inside CTR to be steady :

- IP 02 à 2500' QFE

- IP 20 à 2000' QFE

RWY 02 : If ceiling < 2500 ft, APP regulation.

RWY 20 : If ceiling < 2000 ft, APP regulation.

NOISE ABATEMENT PROCEDURES (NAP)

FIGHTERS TKOF FORBIDDEN BETWEEN 12H00 and 14H00 LOCAL TIME

CLOSED PATROL TKOF FORBIDDEN

Any time if possible, without compromise flight safety : - Use afterburner at minimum,
- Close respect of departure procedures.

DIRCAM

NATIONAL FRA

05 TOURS VAL DE LOIRE LFOT

ALT AD : 357 (13 hPa)

18 JUN 2020

HMSR

APP : 142.450 - 240.975 - 341.725 (Climb)

VAR
0°
(15)

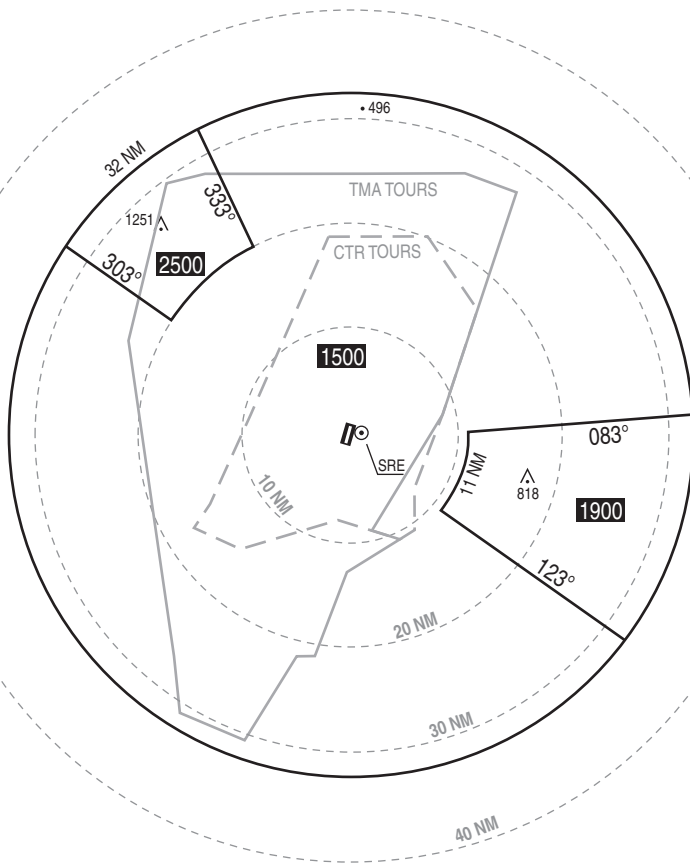
TWR : 124.400 - 344.225

COMMUNICATION FAILURE : Sqwack **7600** apply french national regulation.

48°
00'

47°
30'

47°
00'



The published minimum heights integrate a correction for low temperatures.

000° 00'

000° 30'

001° 00'

001° 30'

DIRCAM

HMSR

CHG : Normalisation.

05 TOURS VAL DE LOIRE LFOT

NATIONAL FRA INSTRUMENT APPROACH

ALT AD : 357 THR : 351

18 JUN 2020

06 TOURS VAL DE LOIRE LFOT HI / LO TACAN SPAR RWY 02

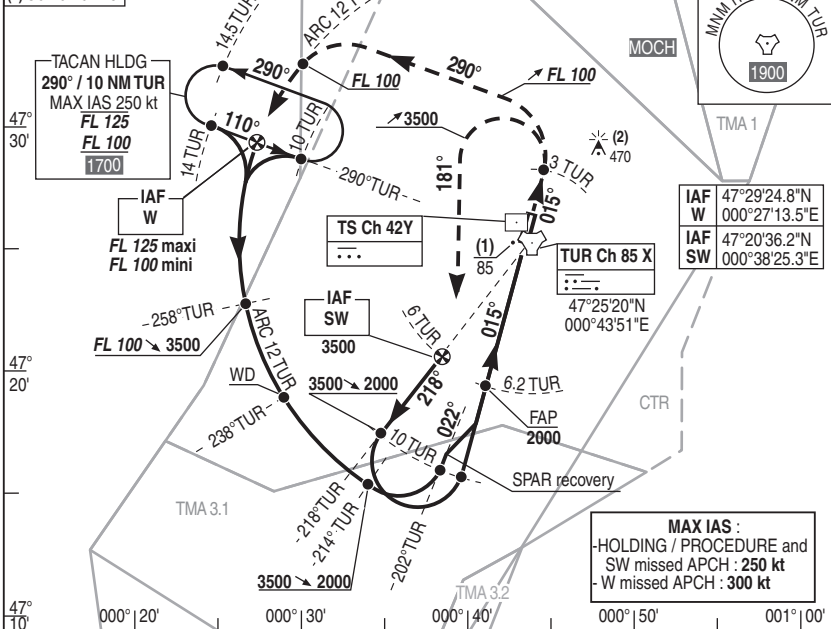
APP : 142.450 - 240.975 - 341.725 (Climb)

TWR : 124.400 - 344.225

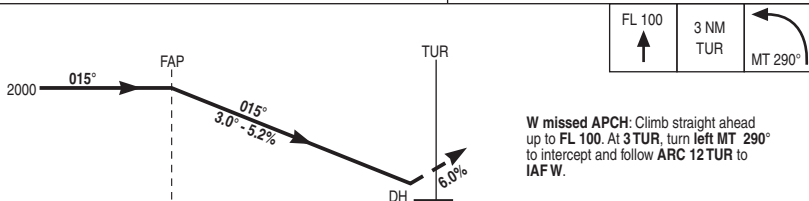
RDH : 50

VAR
0° (15)

- (1) OCH SPAR
(2) OCH CIRCLING



REF HGT : ALT THR in ft



6.2
6.1

CAT	SPAR (1)			CIRCLING (2)		
	DH	RVR	OCH	MDH	RVR	OCH
A	250	1300	184	970	1600	965
B					1600	
C					2400	
D					3600	

ON CLEARANCE

SW missed APCH: Climb straight ahead up to 3500 ft QFE. At 3 TUR, turn left MT 181° to intercept and follow RDL 218° TUR to IAF SW.

Remarks : (1) Increased minimums. (2) Circling west of RWY prohibited and by night.

DIRCAM

HI / LO TACAN SPAR RWY 02

CHG : Normalisation.

06 TOURS VAL DE LOIRE LFOT

NATIONAL FRA INSTRUMENT APPROACH

ALT AD : 357 THR : 351

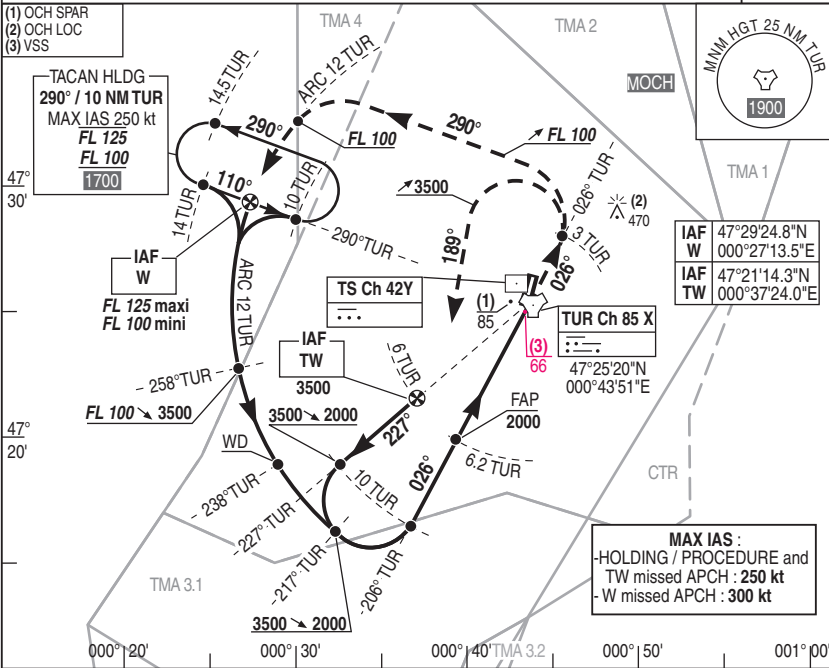
18 JUN 2020

07 TOURS VAL DE LOIRE LFOT HI / LO TACAN RWY 02

APP : 142.450 - 240.975 - 341.725 (Climb)

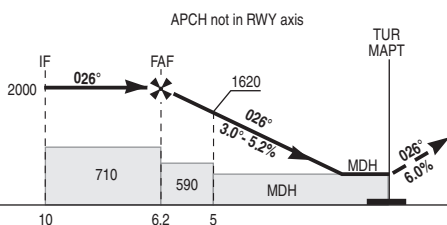
VAR
0° (15)

TWR : 124.400 - 344.225



MAX IAS :
 -HOLDING / PROCEDURE and TW missed APCH : 250 kt
 - W missed APCH : 300 kt

REF HGT : ALT THR in ft



W missed APCH: Climb RDL 026° TUR (MT 026°) up to FL 100. At 3 TUR, turn left MT 290° to intercept and follow ARC 12 TUR to IAF W.

CAT	TACAN			CIRCLING (1)			TACAN NM	6	5	4	3	2	ON CLEARANCE TW missed APCH: Climb RDL 026° TUR (MT 026°) up to 3500. At 3 TUR, turn left MT 189° to intercept and follow RDL 227° TUR to IAF TW.
	MDH	RVR	OCH	MDH	RVR	OCH							
A	340	1500	331	970	1600	965	1940	1620	1300	990	670		
B					1600								
C					2400								
D					3600								

Remarks : (1) Circling west of RWY prohibited and by night. (3) VSS crossed.

DIRCAM

HI / LO TACAN RWY 02

CHG : Normalisation.

07 TOURS VAL DE LOIRE LFOT

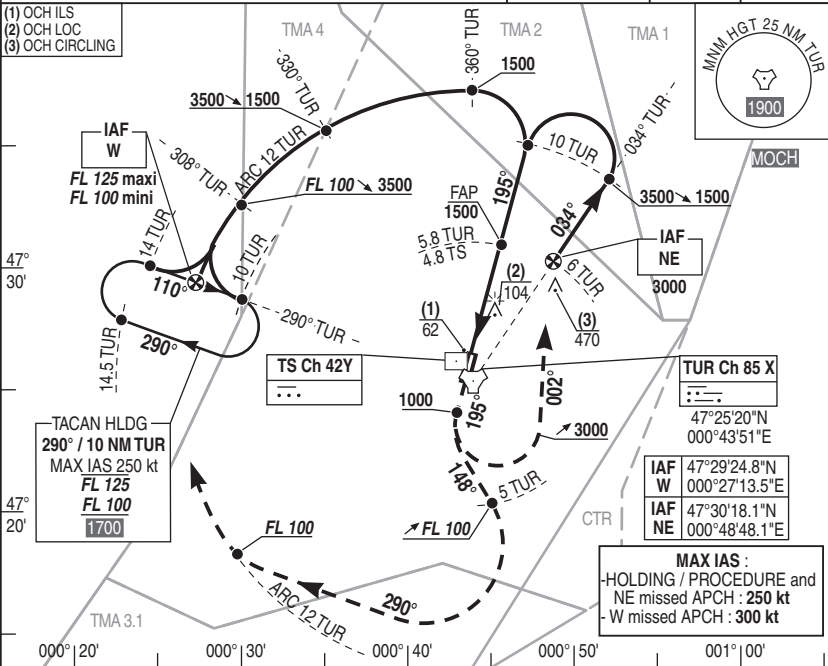
NATIONAL FRA INSTRUMENT APPROACH

ALT AD : 357 THR : 351

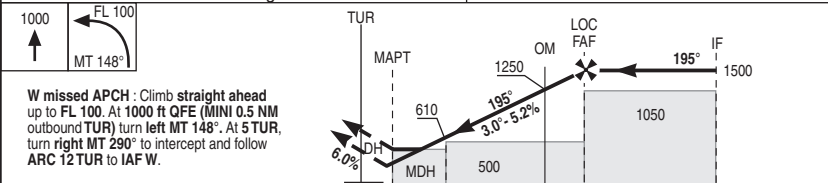
18 JUN 2020

08 TOURS VAL DE LOIRE LFOT HI / LO TACAN ILS RWY 20

APP : 142.450 - 240.975 - 341.725 (Climb)	ILS : TS 110.55 ...	RDH : 50	VAR 0° (15)
TWR : 124.400 - 344.225			



ILS True Heading : 195.27 REF HGT : ALT THR in ft



TACTUR	← (NM)	1.7	3.0	5.0	5.8	10.0
DME TS	← (NM)	0.7	2.0	4.0	4.8	9.0
THR	← (NM)	0.5	1.8	3.8	4.6	8.8

CAT	ILS (1)			LOC			CIRCLING (2)			ON CLEARANCE NE missed APCH: Climb straight ahead up to 3000 ft QFE. At 1000 ft QFE (MINI 0.5 NM outbound TUR) turn left MT 002° to intercept and follow RDL 034° TUR to IAF NE.
	DH	RVR	OCH	MDH	RVR	OCH	MDH	RVR	OCH	
A	250	800	161	350	900	350	970	1600	965	
B								1600		
C								2400		
D								3600		

Remarks : (1) Increased minimums. (2) Circling prohibited west of RWY and by night.

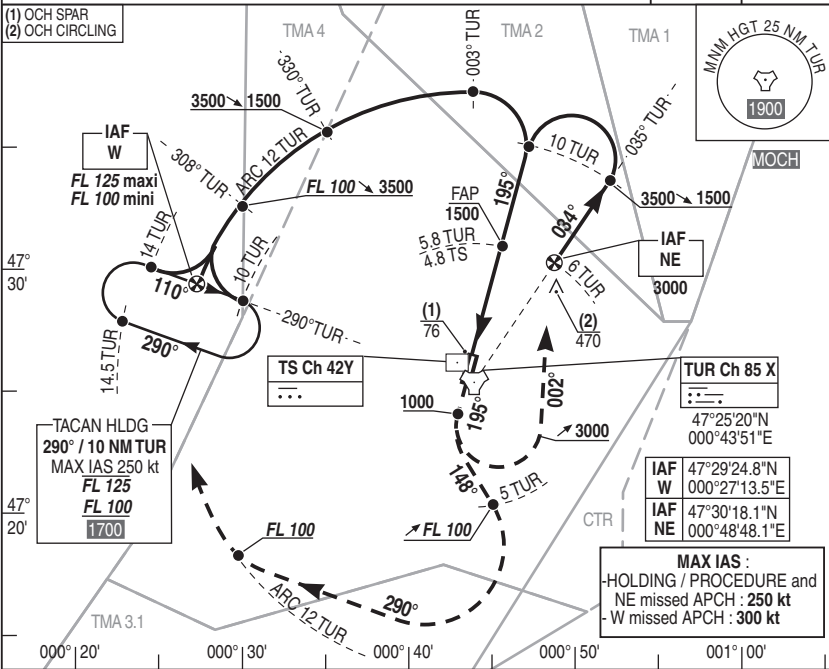
NATIONAL FRA INSTRUMENT APPROACH

ALT AD : 357 THR : 351

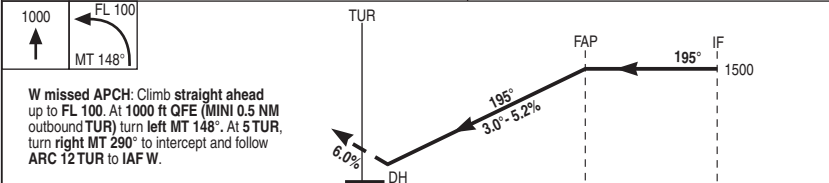
18 JUN 2020

09 TOURS VAL DE LOIRE LFOT HI / LO TACAN SPAR RWY 20

APP : 142.450 - 240.975 - 341.725 (Climb)	RDH : 50	VAR 0° (15)
TWR : 124.400 - 344.225		



REF HGT : ALT THR in ft



TAC TUR	← (NM)	5.8	10.0
DME TS	← (NM)	4.8	9.0
THR	← (NM)	4.6	8.8

CAT	SPAR (1)			CIRCLING (2)			ON CLEARANCE NE missed APCH: Climb straight ahead up to 3000 ft QFE. At 1000 ft QFE (MINI 0.5 NM outbound TUR) turn left MT 002° to intercept and follow RDL 034° TUR to IAF NE.
	DH	RVR	OCH	MDH	RVR	OCH	
A		1500			1600		
B		1500			1600		
C	640	2400	175	970	2400	965	
D		2400			3600		

Remarks : (1) Increased minimums. (2) Circling prohibited west of RWY and by night. DIRCAM

HI / LO TACAN SPAR RWY 20 CHG : Normalisation. 09 TOURS VAL DE LOIRE LFOT

NATIONAL FRA INSTRUMENT APPROACH

ALT AD : 357 THR : 351

18 JUN 2020

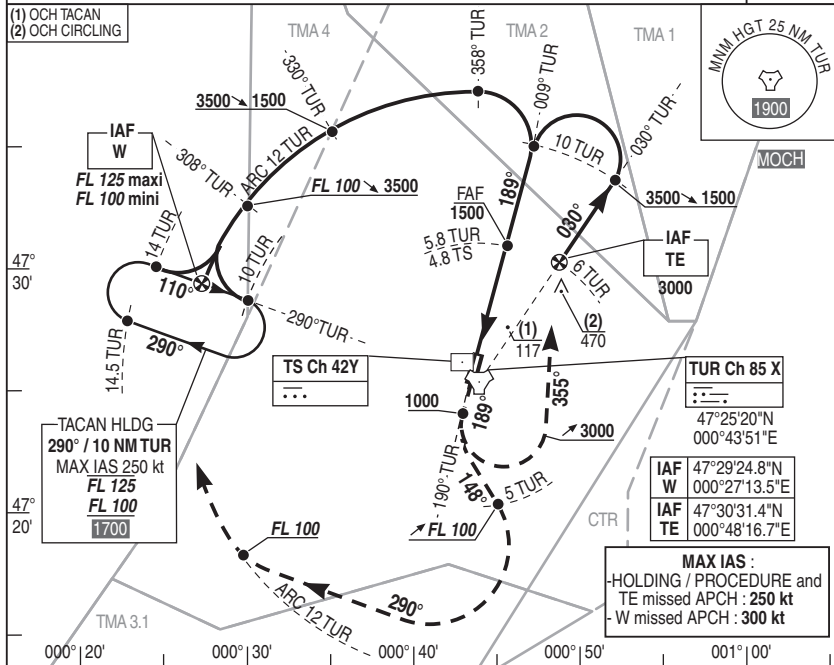
10 TOURS VAL DE LOIRE LFOT HI / LO TACAN RWY 20

APP : 142.450 - 240.975 - 341.725 (Climb)

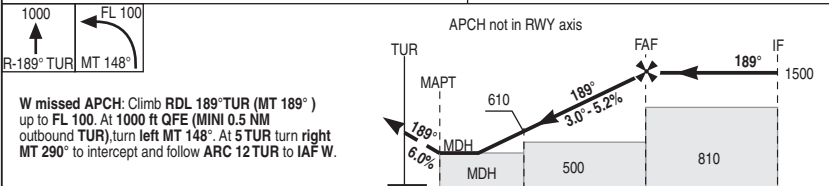
VAR
0° (15)

TWR : 124.400 - 344.225

- (1) OCH TACAN
- (2) OCH CIRCLING



REF HGT : ALT THR in ft



W missed APCH: Climb RDL 189°TUR (MT 189°) up to FL 100. At 1000 ft QFE (MINI 0.5 NM outbound TUR), turn left MT 148°. At 5 TUR turn right MT 290° to intercept and follow ARC 12 TUR to IAF W.

CAT	TACAN			CIRCLING (1)			TACAN	ON CLEARANCE			
	MDH	RVR	OCH	MDH	RVR	OCH		NM	5	4	3
A	370	1000	364	970	1600	965	5	1250	930	610	TE missed APCH: Climb RDL 189°TUR (MT 189°) up to 3000 ft QFE. At 1000 ft QFE, turn left MT 290° to intercept and follow RDL 030° TUR to IAF TE.
B					1600						
C					2400						
D					3600						

Remarks : (1) Circling prohibited west of RWY and by night. VSS checked.

DIRCAM

HI / LO TACAN RWY 20

CHG : Normalisation.

10 TOURS VAL DE LOIRE LFOT

NATIONAL FRA
INSTRUMENT DEPARTURE

SID 01 TOURS VAL DE LOIRE LFOT
DEPARTURES RWY 02

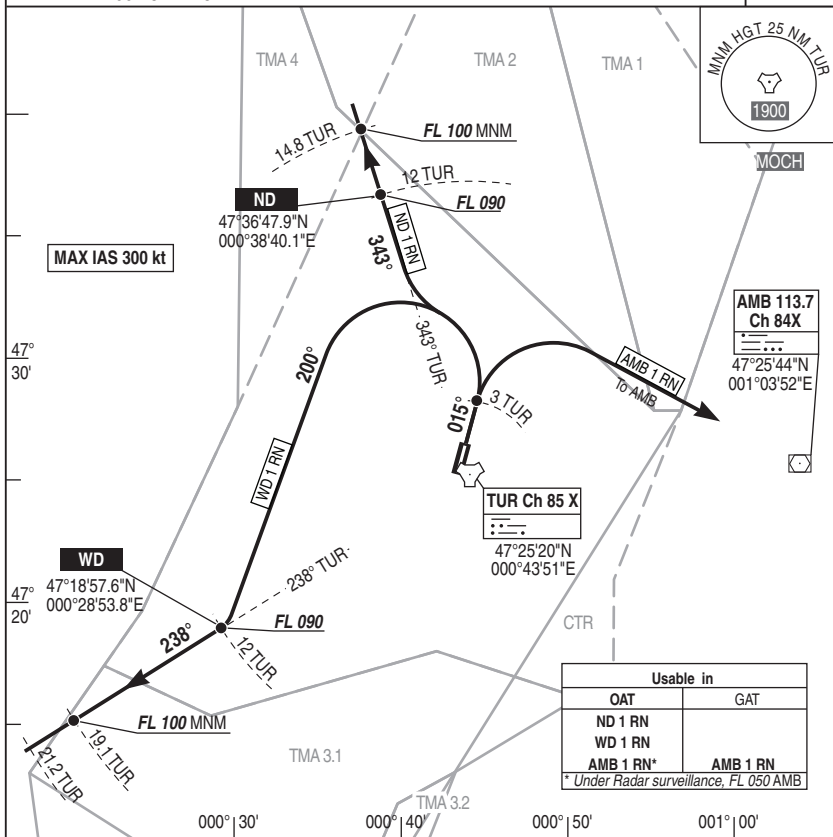
ALT AD : 357 THR : 351

05 NOV 2020

APP : 142.450 - 240.975 - 341.725 (Climb)

VAR
0° (15)

TWR : 124.400 - 344.225



REF HGT : ALT THR in ft

ND 1 RN : Climb straight ahead (MT 015°) up to FL 090.
At 3 TUR turn left to intercept and follow RDL 343° TUR (MT 343°) to ND.

AMB 1 RN : Climb straight ahead (MT 015°) up to cleared FL*.
At 3 TUR turn right to AMB.

WD 1 RN : Climb straight ahead (MT 015°) up to FL 090.
At 3 TUR turn left MT 200° to intercept and follow RDL 238° TUR (MT 238°) to WD.

* OAT DEP : Under Radar surveillance, FL 050 AMB.

DIRCAM

DEPARTURE RWY 02

CHG : Pagination.

SID 01 TOURS VAL DE LOIRE LFOT

NATIONAL FRA
 INSTRUMENT APPROACH
 ALT AD : 357 THR : 351

05 NOV 2020

SID 02 TOURS VAL DE LOIRE LFOT
 DEPARTURE RWY 20

APP : 341.725 (Climb) - 240.975 - 362.300 - 121.000

TWR : 257.800 - 344.225

VAR
 0° (15)

Usable in	
OAT	GAT
SD 1 RS	GAT
AMB 1 RS*	AMB 1 RS

* Under Radar surveillance, FL 050 AMB

MAX IAS 300 kt

MOCH



TMA 6

TMA 4

CTR
 3500
 SFC

AMB 113.7
 Ch 84X
 47°25'44"N
 001°03'52"E

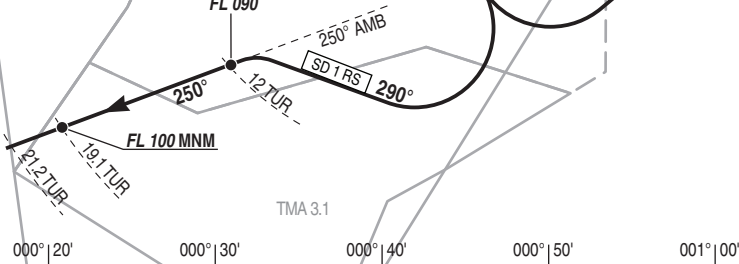
TUR Ch 85 X
 47°25'20"N
 000°43'51"E

SD
 47°17'24.9"N
 000°30'35.7"E
 FL 090

47°
 30'

47°
 20'

47°
 10'



REF HGT : ALT THR in ft

SD 1RS : Climb straight ahead (MT 195°) at 11.1% (1) up to 500 and resume normal climbing up to FL 090.
 At 500 turn left MT 148°.
 At 5 TUR turn right MT 290° to intercept and follow RDL 250° AMB (MT 250°) to SD.
 Do not turn before DER.

AMB 1RS : Climb straight ahead (MT 195°) at 11.1% (1) up to 500 and resume normal climbing up to FL* cleared.
 At 500 turn left MT 148°.
 At 5 TUR turn left MT AMB.
 Do not turn before DER.

* OAT DEP : Under Radar surveillance, FL 050 AMB.

(1) ATS slope : 11.1%. Initial climb disregard obstacle 38 ft at 74 m left of DER.

DIRCAM

DEPARTS RWY 20

CHG : Pagination.

SID 02 TOURS VAL DE LOIRE LFOT

